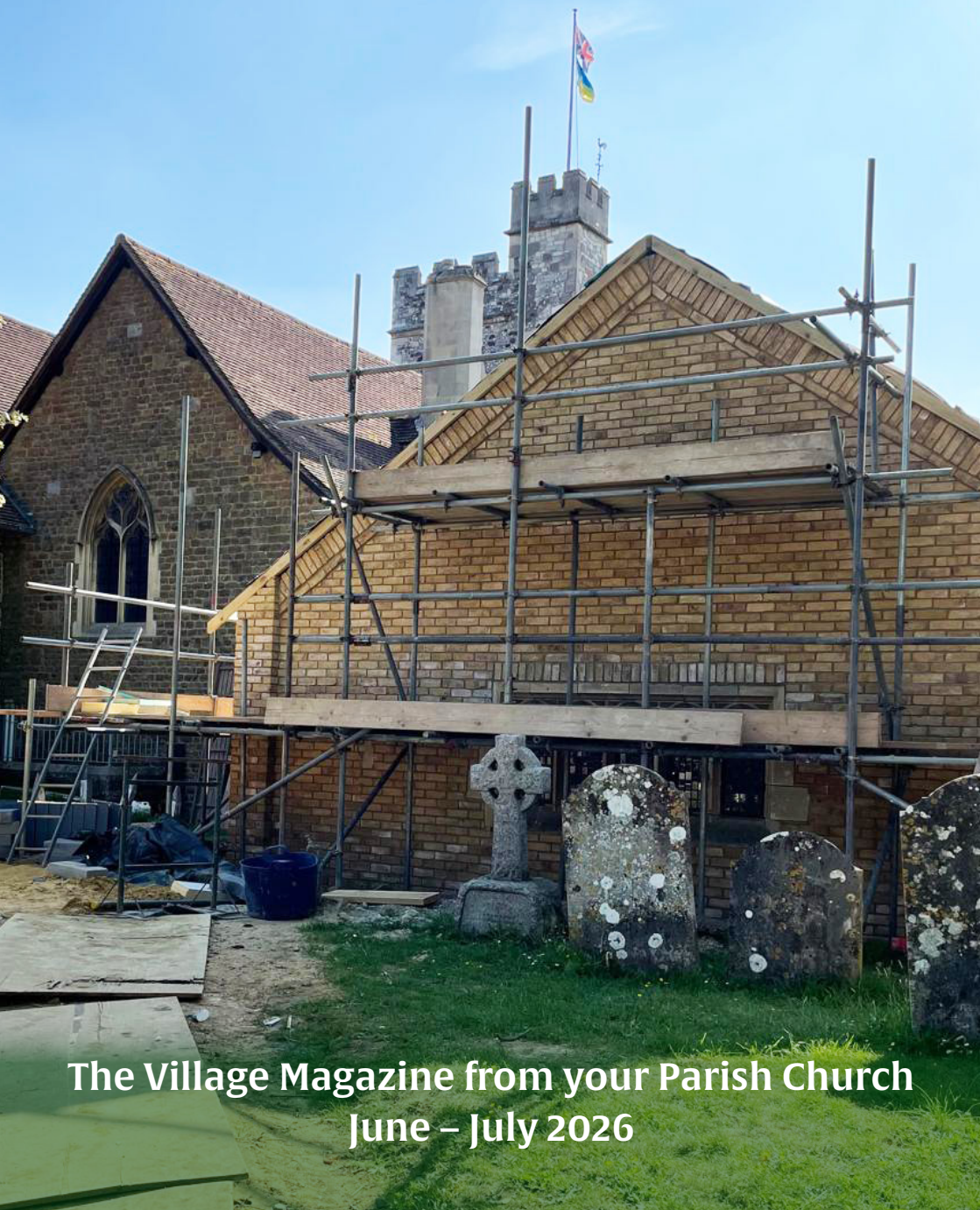


Horsell Matters



The Village Magazine from your Parish Church
June – July 2026

Horsell Directory

St Mary's Church	www.stmarys-horsell.org.uk	
	Baptisms, Weddings or Funerals	772134
Parish Office open	Helen Gravette Tues 9am-4pm, Wed & Fri 9am-1.00pm	772134
	stmaryshorsell@btinternet.com	
Vicar	Revd Dmitry Lutsenko vicar@stmarys-horsell.org.uk	07365 356228
Children & Families' Worker	Rebecca Connolly	772134
Church Wardens	Brian Sheriff	474975
	Sarah Williams Lockhart	07938 901296
Treasurer	David Leach	07708 866196
Pastoral Assistants	Janet Johnson	591756
	Carmen Duncan-Brown	763814
	Hilary Mitchell	715459
JAM (Jesus and Me)	Rebecca Connolly (3+) 10am most Sundays	772134
Bell-ringers and Servers	Alan Nichols [occasional] Tues. evening practice	767852
Trinity Methodist Church	office@trinitywoking.org.uk	730754
Horsell Evangelical Church	Revd Andrew Bents	822259
To Book the Village Hall	Paul Bowyer	764047
Parish Institute	www.horsell-parish-institute.org.uk	772134
Horsell Village School	Infants Head Teacher – Mrs J Reeve	714804
Horsell C of E School	Junior Head Teacher – Mrs C Wand	761531
Woking High School	Head Teacher – Mrs M Walter	888447
Halstead St Andrew's School	Head Teacher – Mr A Ward	760943
Horsell Care	Helpline	07552 553414
Residents Association	Alan Taylor ajrolyat@gmail.com	
Scouts, Beavers, Cubs	Ali Stubbs gsl@horsellscouts.org.uk	07734 424568
Explorer Scouts (14-18 Yrs)	Roy Thompson explorers@woking.scouts.host	
Guides & Brownies	www.girlguiding.org.uk/information-for-parents	
WI Horsell Afternoon	Lyn Clark lyn.clark@btinternet.com	01932 353382
	Meets on 1st Thursday at 1.45pm in the Village Hall	
Horsell Village WI	Liz Smith	01483 835827
	Meets on 4th Tuesday at 7.45pm in the Village Hall	
Woking Police Station	dial 101 from mobile or landline	

Homily

June brings with it longer days, warmer evenings, and a sense that life is opening out again. Around us, creation is growing and flourishing, reminding us that God so often speaks through the rhythms of the seasons. As Ecclesiastes tells us, "For everything there is a season, and a time for every matter under heaven" (Ecclesiastes 3:1).



in Christ Jesus to do good works" (Ephesians 2:10). Volunteering — whether through time, skills, listening ears, or practical help — is one way we respond to God's love and reflect it to others. Even small acts matter: a smile, an encouraging word, a willingness to say 'yes'.

During the summer months in our village, this sense of life and connection feels especially tangible. With the Village Fair, the Garden Safari and the Picnic on the Green all taking place, there are many opportunities to gather, celebrate, and enjoy the community we are blessed to be part of. These shared moments help us to reconnect with one another and to recognise the joy of belonging.

At St Mary the Virgin, Horsell, we are called to be a growing community, rooted in faith, nourished by prayer, and open to the work of the Holy Spirit. With Pentecost falling at the end of May, we are reminded that the Spirit brings energy, courage and new beginnings. As parish life continues through the summer months, may we notice God at work in the ordinary and the beautiful, and have hearts ready to respond.

June is also a time to reflect on our calling to serve. The Bible reminds us that "we are God's handiwork, created

Sarah Williams Lockhart,
Church Warden

SERVICES CARRIED OUT BY THE VICAR OF ST MARY'S CHURCH

FUNERALS, BURIALS AND CREMATIONS

We offer our sympathy to the families and friends of those who have died:
Carol Butterfield Chris Mather Ruth Seaman Stephen Wilmshurst

BAPTISM

We welcome into the family of the church:
Millie Beach

WEDDINGS

We offer congratulations to:
Bethany Partridge & Shaun Kennedy

ST MARY'S CHURCH DIARY **JUNE 2026**

Tues 2nd	2.00pm	Service at Kettlewell House
Wed 3rd	8.00pm	Engine Room House of Prayer
Fri 5th	8.45am-12noon 10.00am	Pop In Coffee Engine Room House of Prayer
Sun 7th	8.00am 10.00am 6.30pm	Holy Communion (BCP) First Sunday Worship Peaceful Prayer & Praise
Fri 12th	8.45am-12noon	Pop In Coffee
Sun 14th	10.00am	Parish Communion
Fri 19th	8.45am-12noon	Pop In Coffee
Sun 21st	8.00am 10.00am 6.30pm	Holy Communion (BCP) Informal Service Contemplative Meditation
Fri 26th	8.45am-12noon	Pop In Coffee
Sun 28th	10.00am 4.00-6.00pm	Parish Communion Messy Church

**To keep everyone safe while the church is being extended,
please follow the signs and diversion through the churchyard.**



St Mary's Church, Horsell: @StMarysChurchHorsell
All correct at the time of going to print.

For further details please look at our website: www.stmarys-horsell.org.uk

ST MARY'S CHURCH DIARY **JULY 2026**

Wed 1st	8.00pm	Engine Room House of Prayer
Fri 3rd	8.45am-12noon 10.00am	Pop in Coffee Engine Room House of Prayer
Sun 5th	8.00am 10.00am 6.30pm	Holy Communion Service (BCP) First Sunday Service Peaceful Prayer & Praise
Tues 7th	2.00pm	Service at Kettlewell House
Fri 10th	8.45am-12noon	Pop In Coffee
Sat 11th	7.30pm	Horsell Sings Concert
Sun 12th	10.00am	Parish Communion
Fri 17th	8.45am-12noon	Pop In Coffee
Sun 19th	8.00am 10.00am 6.30pm	Holy Communion (BCP) Informal Service Contemplative Meditation
Fri 24th	10.00am-12noon 1.00pm	Pop In Coffee Wedding
Sun 26th	10.00am Midday	Parish Communion On Your Own Lunch
Fri 31st	10.00am-12noon	Pop In Coffee

ST MARY'S CHURCH DIARY **AUGUST 2026**

Sun 2nd	8.00am 10.00am 6.30pm	Holy Communion (BCP) First Sunday Worship Peaceful Prayer & Praise
Tues 4th	2.00pm	Service at Kettlewell House
Wed 5th	8.00pm	Engine Room House of Prayer
Fri 7th	10.00am 10.00am-12noon	Engine Room House of Prayer Pop In Coffee

Extension Progressing Well

We are pleased to inform you that great progress has been made over the last couple of months on the redevelopment of the St Andrew's Room, the meeting space at St Mary's.

In the previous issue of Horsell Matters we informed the Horsell Community about the exciting plans to extend the St Andrew's room to provide much needed additional toilets, enhanced catering facilities and additional meeting and storage space. The existing meeting space was built in 1987 using the proceeds from the sale of the former St Andrew's church in Russell Road.

The foundations have now been laid, walls built, and a new roof erected. The site has presented the builders with many unusual challenges each of which they have successfully overcome, including an archaeological excavation, piping concrete hundreds of meters, moving lengthy RSJ beams



across the churchyard on rollers like their Egyptians forebears, and transferring a historic window to its latest (3rd) position. Recently a permanent staircase into the loft storage space has been installed which will be much safer than the previous extendable ladder.

The next phase of the project includes the refurbishment of the existing space to

include new roofing insulation and the erection of solar panels all part of the project's aims to be environmentally sustainable. There will be an opportunity for parishioners and the wider Horsell community to make a financial contribution towards these new improved facilities which we hope you will consider.

This extension is about more than facilities - it's about creating a space where everyone feels they belong, where accessibility is a priority, and where community life can flourish. With your support, the St Andrew's Room will continue to be a place of hospitality, care and joy for generations to come.

All the photos, including the front cover, show the building work's progression in early May 2026.



Volunteer Week – Beyond the Ordinary: Everyday Superheroes

Volunteers' week, from **Monday 1st June** to **Sunday 7th June**, is the UK wide annual campaign to celebrate and recognise the contributions of volunteers. St Mary's is taking the opportunity to use June to thank all volunteers, especially those supporting the schools, to share their stories, and inspire more people to get involved with local initiatives – a special service has been arranged for **7th June**.

Volunteering provides a sense of purpose, increased feelings of accomplishment and with the prospect of learning a new skill. You also have the chance to interact with people from a diverse range of backgrounds, this in turn provides opportunities to practice, improve social and relationship skills. It encourages you to mix and meet people you would probably not have done so otherwise.

Volunteers play a crucial role in supporting organisations across all sectors. Volunteers not only supplement the work of the paid staff but also help organisations extend their reach and effectiveness. Many organisations especially nonprofits operate with limited resources making volunteer efforts so essential for delivering services to those in need.

You are only receiving this magazine because of the volunteers that work hard to put it together, then more kind-hearted people who deliver it to the streets of Horsell come rain or shine.

At St Mary's church there are many groups of volunteers who contribute to the smooth running of the church, for example, cleaning the church, arranging the flowers, bell ringing, helping with the services, making the coffee and let's not forget the Church Wardens. These people are all the unseen heroes.

There are opportunities in our village to use the many talents we have been given, and St Mary's is no exception. You don't have to worship at St Mary's to get involved as we support the Horsell community in many ways including local events and schools. If you would like to find out more, contact Helen at the parish office. The contribution of providing even a small amount of time will make a difference and keep Horsell thriving.

Give it a go and help make a difference.



Churchyard Cat

Those creatures with the opposable thumbs and the ability to use an opener on the cat food tin, like to think of themselves as Cat Owners, but us Cats know them as staff, and this is the time of year when they need to consider our requirement for water and shade during the warmer months of the year. They also need to book up our holiday accommodation so that we can enjoy a well-earned break. I don't know what they do whilst we are away, but I hear tell of journeys away from Horsell; why would anyone want to do that? Especially in the summer when we have the Garden Safari on 13 June, the Village Show on 25 July, and Messy Church for the smaller humans on 28 June and 27 September, the fun filled Breakfast Church on 31 May and 30 August plus a new Church Hall to look forward to in the Autumn.

Local Lecture

Welcome Church, 1-5 Church Street West, Woking, GU21 6DJ
Thursday 11th June at 10.30 am 'Go with the Flow: Art Nouveau (c 1890 – 1920)' by Vivienne Lawes

The sinuous, characteristically whiplash forms that provide the blueprint for Art Nouveau are seen time and again in the fine and decorative art of the late 19th and early 20th centuries, until wiped away by the First World War. A truly international movement, the varied incarnations of the style in different countries is examined in a lecture that celebrates fluidity and movement.

Vivienne Lawes is an art historian, curator, author and journalist with over 25 years' experience in the art market. She teaches

at several Higher Education institutions, including Sotheby's Institute of Art, London, where she leads the professional certificate in Art History, as well as the University of the Arts London, Imperial College, SOAS (University of London) and the City & Guilds of London Art School. In 2021 she received the Geoffrey Bond Bursary for Art, an annual prize awarded by the Worshipful Company of Educators to an "outstanding educator" nominated by their institution.

Proper Italian. Proper Local.

At Squisito Italian Takeaway Kitchen, we're proud to bring freshly prepared Italian food to the Horsell & Woking communities. Owner Michele Vicidomini and head pizzaiolo Aldo, from the home of pizza in Naples, are passionate about serving authentic Italian food made with quality ingredients.

From our hand-stretched pizzas and panini, made with our house dough, to fresh pasta and rotisserie chicken dishes, every meal is cooked to order.

As a local independent business, community support means everything to us. We're incredibly grateful to the residents, clubs, schools and organisations who continue to use local businesses like ours. We're also keen to help local raffles,

charity events and community occasions with vouchers and catering offers. Please get in touch via email.

Check out our lunchtime collection offers and all-day savings via our website. We're running seasonal voucher offers for Horsell Village throughout the year, including 20% off orders this May and June with a unique code SPRING20 – apply at checkout when ordering online for collection or delivery, Tuesday to Sunday.

Squisito Italian Takeaway Kitchen
Order direct & save:
www.squisitotakeaway.co.uk

Tuesday to Sunday, 12noon to 10pm.
109A High Street, Horsell, GU21 4SY
Tel: 01483 725008

E: admin@squisitotakeaway.co.uk
IG: @Squisitotakeaway



Squisito
ITALIAN TAKEAWAY KITCHEN

PROPER PIZZA. PROPER ITALIAN.
Fresh pizza, pollo & pasta – made to order

ORDER DIRECT & SAVE MORE
squisitotakeaway.co.uk
Better prices when you order direct
Collection & delivery • Horsell & Woking

Scan to order

<p>Squisito ITALIAN TAKEAWAY KITCHEN</p> <p>20% OFF YOUR ORDER 1 May – 30 June Min spend £20</p> <p>Valid via squisitotakeaway.co.uk. Multiple use during validity period. Collection & delivery. T&Cs apply.</p> <p>Code: SPRING20</p>	<p>Squisito ITALIAN TAKEAWAY KITCHEN</p> <p>£5 OFF £25 SPEND 1 July – 31 Aug Min spend £25</p> <p>Valid via squisitotakeaway.co.uk. Multiple use during validity period. Collection & delivery. T&Cs apply.</p> <p>Code: SUMMER25</p>
<p>Squisito ITALIAN TAKEAWAY KITCHEN</p> <p>20% OFF PIZZA POLLO PASTA 1 Sept – 31 Oct Min spend £20</p> <p>Valid via squisitotakeaway.co.uk. Multiple use during validity period. Collection & delivery. T&Cs apply.</p> <p>Code: AUTUMN20</p>	<p>Squisito ITALIAN TAKEAWAY KITCHEN</p> <p>£10 OFF £50 SPEND 1 Nov – 31 Dec Min spend £50</p> <p>Valid via squisitotakeaway.co.uk. Multiple use during validity period. Collection & delivery. T&Cs apply.</p> <p>Code: FESTIVE10</p>

109A High Street, Horsell, GU21 4SY

Open Tuesday to Sunday, 12 noon – 10pm

Gospel Matters – Luke

The New Testament of the Bible opens with four Gospels – the word means ‘good news’. These are good news - biographical records of the things that Jesus did and said. The third book is Luke’s Gospel.

Luke was born in Antioch in modern Syria and wrote his gospel in Greek. He wrote it sometime around 75 AD/CE. Luke also wrote a second book, the Acts of the Apostles, which gives us valuable insights into the life of the early church. Luke was an educated man, a historian and a medical doctor. He worked hard to research the work and holiness of Jesus and was convinced by what he found. For a time, Luke was a missionary and a companion of St Paul.

Like Matthew, Luke drew heavily on Mark’s Gospel for the events of Jesus’s life. He used Q*, a written account that has not survived, of the teaching and sayings of Jesus along with some of his parables. Luke found other material that only appears in his gospel, such as the account of angels appearing to shepherds announcing the birth of Jesus (chs 1, 2). Luke recorded many of the parables of Jesus and events from his ministry in Galilee before Jesus’s final journey to Jerusalem.

Luke mentions the youth as well as the birth of Jesus. He then goes on to tell of Jesus’s adult ministry in Galilee, his journey to Jerusalem and, once there, his travesty of a trial, leading to execution, followed by his resurrection.

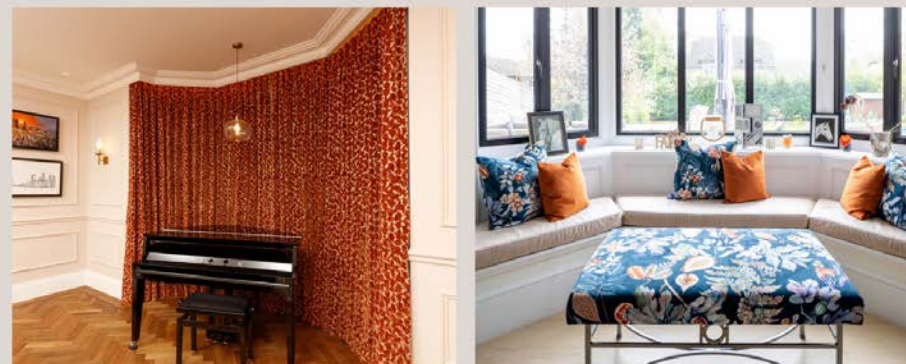


Luke’s gospel records the concern of Jesus to seek out and save the lost; the people Jesus met who were sick or suffering in body, mind or spirit. He also tells of the kindness of Jesus towards women - something which was unusual in that time and culture. Luke’s gospel shows that significant numbers of women followed Jesus, in addition to his male disciples. We learn too from this gospel how Jesus spent much time in communion with God in prayer. Luke ends his gospel with Jesus’s promise that, when he has gone away from them, his followers will be equipped with power from on high.

*The Q source is a hypothetical written collection of Jesus’ sayings believed to have been used by the authors of Matthew and Luke but not found in Mark.

Sophie Sews

CURTAINS | BLINDS | INTERIORS



Renovating or refreshing your home?
Experience the best in bespoke, made-to-measure soft furnishings. Call now for an in-home design consultation or visit our showroom in Horsell.
Let us turn your dream interiors into a stunning reality!



www.sophiesews.com
76 High Street, Horsell, Woking, GU21 4SZ
01483 598056
sophie@sophiesews.com

Grave Matters

Following our last article on Hylton Tidy, Headmaster of the Village School, in the difficult days of World War I, we now come to the grave of the first Headmaster of Horsell School, Felix Forder, which along with his first wife's is the first grave to be seen as you come to the main entrance of the churchyard.

Felix was born in 1805 and christened in Minstead in the New Forest on 31 March 1805, the son of domestic servant. Little is known about his early life, but he married Anne Ward at Fritwell, near Bicester, in 1836, where he was schoolmaster. He was highly respected by the community at Fritwell, superintending the clothing club and the Sunday School in the village, being given a plate and £5 for these services in 1842. By 1851 Felix is shown as the Headmaster of the National School in Horsell with Anne being the mistress of the school until her death in April 1853 aged 52. The school had only just been re-formed by the National Society, and the date of its building and Felix's arrival in 1851 is on the gable of the school. In April 1855 Felix married Mary Ann Cox at St Mary's, Horsell and their daughter, Anne Ruth, was baptised in St Mary's on 9th March 1856 with another daughter, Sarah Jane Elizabeth, being baptised on 26th April 1857.

Felix had an untimely death. In May 1857 he had a paralytic attack and the Vicar of St Mary's, Rev Mangles invited Felix to spend a few days at his house, Beech Hill, Mayford to recuperate but, while walking in the grounds, Felix fell down and died. He was described as "a man of sterling worth, an ever-ready friend".

Rosemary and Richard Christophers



Forder Graves

Horsell Matters: Next Edition August/September 2026

Copy to be sent by 1st July by email please to: stmaryshorsell@btinternet.com

Advertising: please contact Sales at Knaphill Print, Tel: 01483 474900 or email: sales@knaphillprint.com

The Horsell Matters team extend their grateful thanks to **Knaphill Print Co Ltd** for producing this not-for-profit Parish magazine.

The views expressed by contributors to the magazine are not necessarily those of the PCC of St. Mary's Church. All advertisements are accepted in good faith.

Bee-lieve Foundation



Bee-lieve Foundation is a local charity supporting the emotional wellbeing and mental health of children and young people, working closely with schools, families and community partners to provide early intervention and build nurturing environments where young people can thrive. #strongertogether

The Make a Difference for Molly Project, created in memory of Molly Price, is a Bee-lieve Foundation initiative.

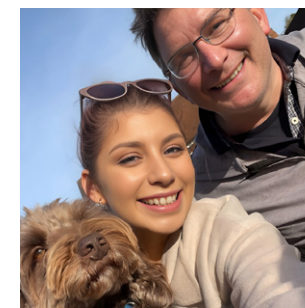
The project launched in five Woking schools in September 2025 and is already making a real difference. We're delighted that a further five schools will be joining the programme in September 2026, extending support to even more children locally.

At its heart, the Molly Project is about helping young people build resilience, confidence and emotional awareness, while also supporting the adults around them.

We are proud to have a fantastic group of volunteers already supporting our work, bringing energy, compassion and a real commitment to making a difference.

Volunteers play a vital role in making it possible for us to bring early intervention wellbeing support into schools and clubs. From event planning and logistics to social media, fundraising and admin support, every contribution helps us reach more young people and families.

If you live locally and would like to get involved, we would love to hear from



Molly with her dad, Clive.

you. Visit our website to get in touch and find out more about volunteering opportunities, our events, and all things Bee-lieve Foundation www.beelievefoundation.co.uk If you're representing a business, please consider partnering with or sponsoring us. There are many ways your organisation can make a meaningful difference in supporting young people's emotional wellbeing.



Bee-lieve supporters enjoying our annual marathon walk

SUMMER OFFERS

at your local independent electrical retailer

 euronics

Hotpoint

1400 Spin 7kg Washing Machine

NSWE7469WSUK

- 16 programmes including Eco Programme
- Steam hygiene, rapid option
- Anti-stain technology, 24-hour delay
- H85 x W59.5 x D54cm

Only **£319.99** | 1 Year Labour 10 Year Parts
A Energy Rating



Hotpoint

1400 Spin 9kg Washing Machine

HBWH93CAREUK

- Anti-Stain technology tackles 24 stain types
- Fabric Care features
- Steam Care function
- H84.5 x W60 x D58cm

Only **£429.99** | 1 Year Labour 9 Year Parts
A Energy Rating



 **BOSCH**

1400 Spin 8kg Washing Machine

WGE03408GB

- 14 programmes including 15-min quick wash
- SpeedPerfect, ActiveWater
- Add laundry feature, delay timer
- H84.5 x W59.8 x D58.8cm

Only **£429.00** | 2 Year Warranty
A Energy Rating



 **BOSCH**

1400 Spin 10kg Washing Machine

WGG254Z1GB

- 20 progs. incl. 15-min quick wash
- SpeedPerfect, anti-stain system
- IronAssist Feature, delay timer
- H84.5 x W59.8 x D58.8cm

Only **£649.00** | 5 Year Warranty
A Energy Rating



RSM
Domestic Appliances
FRIENDLY SERVICE • BIG SAVINGS • FAST DELIVERY

YOUR LOCAL DOMESTIC APPLIANCE SUPERSTORE

1-2 Albion Parade, High Street, Knaphill, GU21 2PS

Also in Guildford and Epsom Downs

01483 475000 • www.rsm domesticappliances.com

Terms and Conditions apply. Sold as an agent of Euronics Limited. All rights reserved. All offers are subject to availability while stocks last. Delivery and installation charges may apply. Exclusions and radius apply. See in store for full details. Images for illustration purposes only. Copyright Euronics 2026.

Prince Roofing

Father and Son Roofing Specialists
with over 50 years of experience

- ❖ Tile Roofs ❖ Slate Roofs
- ❖ Specialist Leadworks ❖ Flat Roofs
- ❖ Roof Repairs ❖ Roof Maintenance
- ❖ Storm Damage and Insurance Works
- ❖ Roof Maintenance ❖ Drone surveys
- ❖ Chimney Repairs and Rebuilds
- ❖ Fascias, Soffit and Guttering

For a free quotation call or email

Fred at Woking: 07950 875 411
Chris at Odiham: 07904 270 313
Office: 01256 702428
Email: info@princeroofing.co.uk

THE IRON LADY



39, High Street, Woking,
GU21 4UD

T: 07900 567000

E: kassie44@hotmail.com

 Woking
Foodbank



Woking Foodbank provides short term emergency food to local people referred to us in crisis situations.

We are given space to distribute supplies by 4 generous hosts in the Woking borough, including The Lighthouse in Woking town, The Mascot hub in Sheerwater, The Salvation Army Church in Sythwood and Byfleet Methodist Church.

Our town centre location, The Lighthouse is due for demolition but we are delighted to announce the opening of a new Lighthouse, in Church Path this week. We are really delighted to be given space in the new building and look forward to continuing to serve our visitors in this new and welcoming space.

Please get in touch if you support people in need and would like to make referrals to our Foodbank, if you need our help, or would like to donate food, money or your time.

Woking Foodbank, The Lighthouse, Unit 4, Church Path, Woking, GU21 6EL. Tel: 07896 077 760 E: info@woking.foodbank.org.uk Web: woking.foodbank.org.uk

1ST & 3RD SUNDAY INFORMAL WORSHIP

An informal service for all
Do join us!

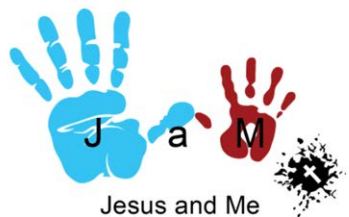


First and Third Sunday
Every month at 10am

7th and 21st June
5th and 19th July

Saint Mary the Virgin
Horsell

JESUS AND ME



Jesus and Me

A time for children aged 3+ to learn
and worship together during our
10am Holy Communion
Sunday Services

J A M
2nd and 4th Sundays

Saint Mary the Virgin
Horsell

FRIDAY POP-IN COFFEE

8.45am until noon
(term time)



10am to 12 noon
(school holidays)

Why not drop in for a
cuppa, a piece of cake and
a chat once you have done
the school drop-off?

Saint Mary the Virgin
Horsell

2ND & 4TH SUNDAY HOLY COMMUNION



A formal
service of Parish
Holy Communion
at 10am
All welcome



Young children can enjoy their own time
at 'Jesus and Me' during the service
before returning as we take communion.

14th and 28th June
12th and 26th July



Saint Mary the Virgin
Horsell



4.00pm to 5.30pm

28th June

Explore a Bible theme through
craft, food, games or nature.
There will be a short celebration
with a story, songs and prayers.

For all ages! Picnic tea provided

Messy Church is part of The Bible Reading Fellowship (BRF), a
Registered Charity.
brf.org.uk

Saint Mary the Virgin
Horsell

STAY IN TOUCH



St Mary's Parish Office is open
Tuesday 9am to 4pm
Wednesday & Friday 9am to 1pm
Telephone: 01483 772134



Visit our website at
stmarys-horsell.org.uk



Follow us
StMarysChurchHorsell
st_marys_horsell_matters



Email us:
stmaryshorsell@btinternet.com
horsellmatters@gmail.com
Our services are streamed via You Tube
@stmaryshorsell



Saint Mary the Virgin
Horsell

HOLY COMMUNION SUNDAY 8AM

A formal service of
Holy Communion
on the 1st, 3rd and 5th Sundays



Also, on the 2nd and 4th Sundays
a laity-led Communion
by extension service



Saint Mary the Virgin
Horsell

"I AM THE VINE,
YOU ARE THE BRANCHES.
IF YOU REMAIN IN ME
AND I IN YOU,
YOU WILL BEAR MUCH
FRUIT;
APART FROM ME
YOU CAN DO NOTHING"
JOHN 15: 5



Saint Mary the Virgin
Horsell

COLOUR AND LEARN ABOUT VOLUNTEERING AT ST MARY'S CHURCH

The church runs on volunteers!

Volunteers do a whole host of things. Colour in the pictures and learn about different things that volunteers do.



Baking cakes and serving teas and coffees



Playing musical instruments and singing



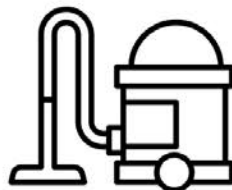
Admin tasks and setting up



Sound desk



Flower arranging



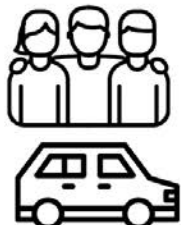
Cleaning



Running a toddler group



Open the Book at schools



Giving lifts and visiting people

Did you know? Volunteering at church is called 'serving'. People offer their time and skills to serve God and their community.

The Bible says in 1 Peter chapter 4 verse 10

"Each of you should use whatever gift you have received to serve others".

Woking & Sam Beare Hospice Ribbons & Hearts Walk

A beautiful, family friendly memory walk set within the stunning grounds of Horsley Towers on **Sunday 28th June**.



The Ribbons and Hearts Walk is part of the Woking & Sam Beare Hospice Go Grab Life family of events: **moments to celebrate those we miss by creating new memories with the people who cared most about them.**

The walk will start at 11am and the East Horsley Village Picnic will

follow and will be open until 5pm. Well behaved dogs are welcome (£3 charge). Children under 5 can join for free and do not need to be registered. Due to uneven terrain, the route is not suitable for wheelchairs or buggies. Entry is £22 for adults, £12 for Under 16s, Free for under 5s.

Horsell Sings!

Two dates for your diary if you know and love hearing our local community choir sing. Your support is always appreciated. There is likely to be at least one face you recognise in the choir.



The combined choirs of Horsell Sings! and Guildford Vox will perform at **Guilfest** for the third year running. On **Saturday 4th July** they perform at 12 - 12:30pm in Stoke Park, Guildford, GU1 1ER. All choir members, as a thank you for their performance, get free entry to the festival for the whole weekend but tickets need to be bought for any friends and family. The headliners include: Sophie Ellis-Bexter, The Proclaimers and Kid Creole and the Coconuts, to name a few.

On **Saturday 11th July, 7:30pm** (doors 7pm), the choir rounds off its (academic) year of singing with their

Summer Concert at St Mary's Church. Proceeds from this concert will support a local charity.

The choir is conducted by composer Anna Tabbush. Anna is a singer and multi-instrumentalist, and is well known for her heartfelt, socially conscious songwriting, alongside her extensive experience as a community choir leader and workshop facilitator. Her song Harbour, which she wrote in 2020 in support of refugees fleeing the war in Syria, has been sung by choirs around the world.

Garden Matters

In my garden, with limited growing space, successional sowing (a few seeds every couple of weeks) is essential to ensure a continuous supply of crops.

Fast maturing crops such as carrots, French beans and spinach (preferably bolt-resistant Celesta F1, Medania (slow-growing, good for baby leaves) and perpetual spinach) can all be sown in June. Other possibilities and favourites of mine are beetroot, courgette, squash, runner beans, radish, purple sprouting broccoli, also loose-leaf lettuce varieties which take up little room between other crops and benefit from some shade. Varying growing places for same-type vegetables reduces the risk of pests and diseases (see online RHS Crop Rotation).



The raised bed shown is a pallet support

My go-to July sowings are chard, winter salad leaves and, again, carrots, the latter preferably sown in beds or pots 60cm above ground level to eliminate the risk of carrot fly. For lower containers, I find small clumps of garlic chives or other strongly scented herbs planted nearby work well in deterring these little pests.

Lettuces, beetroot leaves and chard are loved by sparrows! I now grow a pot of each for them and protect the rest with netting.

Useful Wood in Woking has proved to be a good place to buy raised beds. The ex-pallet supports are cheap, strong and vary in sizes and there are lots of other options there.

Vegetable and bedding plants in pots will benefit from a weekly feed until September whilst growth is active.

Organic seaweed feed is a good all-rounder.

Plants in good soil require less, if any, feeding.

Elna Broe



Developing seeds

RESTORE OFFICIAL




A CLEANER ALTERNATIVE

SUPERIOR CARPET & UPHOLSTERY CLEANING

BEFORE **AFTER**

FREE CALL OUT QUOTATIONS

Call Harry James: **07852 565644**
Office: **01483 399735**
Email: **restore@restoreofficial.com**
Website: **www.restoreofficial.com**



Horsell Village Show

This year's show is to be held on **Saturday 25th July at Woking High School**, using a larger area of their field so we can fit in more attractions for local families to enjoy.

The marquee hosts the exhibits entered by Horsell residents, from fruit, vegetables and floral art, to photography, art, cookery, handicrafts and many children's entries. We hope people have been busy preparing their exhibits and going online to complete their applications.

Much more is to be seen at the show, from entertainments of all kinds, to include music from the school plus other local bands, dancing from Summerscales Performing Arts, Stagecoach, a karate and/or a judo display, a local fire engine to view and Koala Kids Entertainment.

There will be plenty of craft stalls to wander around, with a huge variety of goods on offer. If you get hungry or thirsty, you can visit the BBQ stand, Dee's Indian snacks, enjoy delicious afternoon teas, the ice-cream van or you could quench your thirst at the Thurston's beers or the Pimm's stall (soft drinks will be available).



The show will run from 12.00 noon until 4.30 pm, closing after the presentation of prizes and the distribution of the raffle prizes. Don't forget to buy your tickets at the entrance, where you will be admitted for the bargain price of £2 for adults with free entry for children. If you can, please walk to the show, as parking is extremely limited.

The show does not run itself; we always need help to set up the show on the Friday and take down at the end of the show – and new committee members are always welcome.

More information can be found on the show website, which is: www.horsellvillageshow.co.uk

Horsell Village Show Committee



Providing trusted nursing care, tailored to you



Discover the peace of mind that comes with trusted nursing care tailored to your individual needs. Our dedicated team of nurses are committed to providing personalised care in a warm and supportive environment, ensuring your wellbeing and comfort every step of the way. Experience the difference at Horsell Lodge Care Home.

Call freephone

01483 397 317

Find us online

caringhomes.org

Kettlewell Hill, Woking, Surrey, GU21 4JA

This rating is correct at time of print

BOOK A VISIT TODAY



Horsell Lodge
CARING HOMES

Book Review

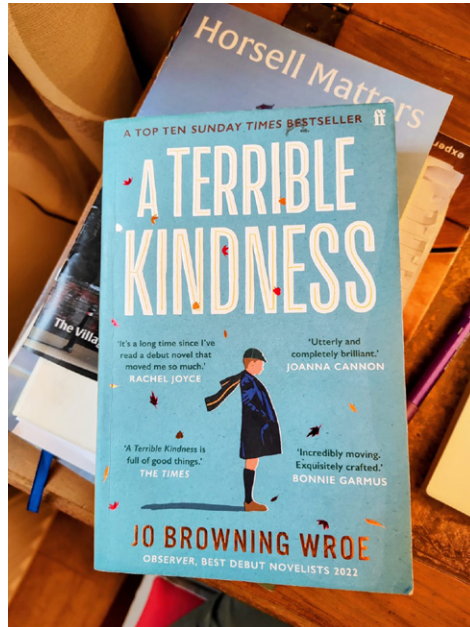
A Terrible Kindness by Jo Browning Wroe

It is October 1966 and William Lavery is having the night of his life at his first black-tie do. But, as the evening unfolds, news hits of a landslide at a coal mine. It has buried a school: Aberfan.

William decides he must act, so he stands and volunteers to attend. It will be his first job as an embalmer, and it will be one he never forgets. His work that night will force him to think about the young boy he was, and the losses he has worked hard to forget.

Despite the mawkish synopsis, I found this novel a surprising, moving and well written debut novel. It was recommended to me by my daughter-in-law. We sometimes give each other book recommendations but it's not without responsibility – that nagging voice in your head wondering if someone else might like it as much as you. Fortunately, our book tastes aligned on this one, despite our 30-year age difference.

Two pieces of music thread through the novel: Allegri's Miserere (a setting of Psalm 51, usually performed in Holy Week, dating from the 17th-century and renowned for its ethereal vocal harmonies) and O Myfanwy (a popular Welsh love song composed by Joseph Parry in four parts for male voices, and first published in 1875). The former



I could hear in my subconscious as I turned the relevant pages, the latter, not familiar, but worth listening to, in Welsh – you will find many versions following an online search.

Vanessa McMurtrie
Editor, Horsell Matters


www.hsaschool.co.uk
 01483 760943
 Book a tour




We now offer a senior school pathway. Call us to find out more.

Discover HSA
 Halstead St Andrew's School
 An independent Prep School for children aged 2-13 in Horsell
Nurture - Thrive - Succeed


 HOLIDAY COTTAGES

Tucked away in Machynlleth, our holiday cottages sit between the gentle murmur of the river and the timeless stillness of the hills. The perfect place to pause, breathe, and truly unwind.



07774 806001
www.felincrewi.co.uk



Home Improvements
 PVC • Aluminium • Timber
 Windows • Doors • Roof Lanterns • Bi-Folds
 Orangeries • Garden Rooms • Conservatories

01483 727 474 | sales@krbltd.com
 109 High Street | Horsell | Surrey | GU21 4SY
 76 High Street | Old Woking | Surrey | GU22 9LN


 Where reputation matters



 APPROVED WINDOW & DOOR INSTALLATIONS

The Return of a
Legend



All-New
Prelude

 Full Hybrid Coupe


 SCAN ME



TRIDENT HONDA 4.8 ★★★★★ 569 Google Reviews
 Trident House, Guildford Road, Ottershaw, Chertsey KT16 0NZ
 Call 01932 559090 or visit tridenthonda.co.uk/prelude



Model shown: Honda Prelude Advance e:HEV Hybrid in Meteoroid Grey with an OTR price of £41,695. **Worldwide Harmonised Light Vehicle Test Procedure (WLTP):** Combined fuel consumption (mpg): 54.3; Combined CO2 emissions: 117. **Honda Motor Europe Terms & Conditions:** This vehicle is supplied by Honda Motor Europe Ltd (HME) (Company No. 857969). Trident Garages Ltd (Trident Honda) acts as an authorised retailer on behalf of Honda Motor Europe Ltd. The purchase of this vehicle is subject to Terms and Conditions which may be accessed at tridenthonda.co.uk/hme-terms-conditions.



BOOKKEEPING AND PAYROLL EXPERTS

- **Bookkeeping** – day to day entry, VAT returns, management accounts, reconciliations
- **Payroll** – weekly and monthly processing, starters, leavers, RTI, P60s
- **Auto Enrolment**

We want to take away the headache of bookkeeping and payroll so you can concentrate on the more important aspects of running your business.

Please contact us for a free consultation to discuss how we can help support your business.

Tel: 01483 755311

Email: mail@pabsco.co.uk

Web: www.pabsco.co.uk

Sundial House, High Street, Horsell, Woking, Surrey, GU21 4SU

SURREY • BERKSHIRE • HAMPSHIRE • LONDON

pabsco
PAYROLL & BOOKKEEPING SUPPORT

FRAZERS SURVEYORS

Your Local Chartered Surveyors

RICS HomeBuyer Reports

Building Surveys

Valuations

All Types Of Buildings

Over 30 Years Experience

Call Or Visit Us Today For A Competitive Quote

Frazers Surveyors Ltd
Thornash House, 37 High St, Horsell, GU21 4UR
T: 01483 730909 E: surveying@frazers.co.uk
www.frazers.co.uk



CONVEYANCING AND PROBATE PRACTITIONERS

We offer the below services to our clients, conducted in a friendly, professional, supportive manner. We are excellent communicators using both technology and traditional standards of service to suit our clients.

- PROPERTY LAW SPECIALISTS
- SELLING AND/OR BUYING A PROPERTY
- REMORTGAGES • TRANSFERS • PROBATE
- WILLS • DECLARATION OF TRUSTS
- LASTING POWERS OF ATTORNEY
- COMMISSIONERS FOR OATHS

Please telephone or email for a free estimate or for further information.

Business Hours: 9am to 5.30pm Monday to Friday
Free Parking

T: 01483 485700 F: 01483 485701

E: info@lyonsandcompany.co.uk

6 Anchor Crescent, Knaphill, Woking, Surrey GU21 2PD

Woking Funeral Service



Proudly serving your local community since 1880

Woking Funeral Service are here to support and guide you. We offer a friendly, professional service to families.

Horsell

01483 355 752

78 High Street
GU21 4SZ

Call or visit our team in branch. Rachel Chambers and Debby Loughman are on hand to offer their experience and local knowledge to support you with all your bereavement needs.

- 24-hour service
- Bereavement advice
- Transparent pricing
- Private chapel of rest
- Floral tributes
- Memorial masonry
- Home visits
- Prepaid funeral plans
- International repatriation

We are here to help 24 hours a day.

www.wokingfunerals.co.uk



KNAPHILL PRINT

your thoughts - ideas and images in print

Quality **Graphic**
Design - **Printing** - Logos

Creative **Clothing**
Design and **Printing**

Signage Design
and **Printing** Hoardings

Inventive **Vehicle**
Design and **Wraps**

01483
474900

sales@knaphillprint.com
knaphillprint.com



YOGA • PILATES

8 WEEKLY CLASSES • ONE HALL

Drop-ins welcome



Scan to book your class or email: yogabyshen@gmail.com



www.yogabyshen.co.uk

*You will never truly know the value of a moment,
until it becomes a memory...*

Violin Teaching

Experienced violin
teacher & violinist



Emmanuel Bach

Graduate:
Royal College of Music
and
University of Oxford

DBS checked
and ISM member
Based in Woking

Emmanuel.F.Bach@gmail.com

Motormech

Your Local Service and MOT Centre

**MOT
Tests
£39.00**

We aim to help our customers maintain their vehicles and enjoy safe motoring. We provide a friendly, professional and honest customer experience for all makes and models at competitive rates. We operate a collection & delivery service.



**Standard
Service & MOT***

£139 inc. VAT



**Complete
Service & MOT***

£229 inc. VAT



Standard Service*

£119 inc. VAT



Complete Service*

£199 inc. VAT



Book Online: www.motormechguildford.co.uk Or Call: 01483 502671

Unit 1H, Cathedral Hill Industrial Estate, Guildford, Surrey GU2 7YB

Our Service Team will be happy to provide you a quotation and make a booking. You can also book online. All makes and models.

* Terms & Conditions apply. We will report to you if the spark plugs require changing.

* We'll collect and deliver your vehicle Free of charge within a 5 mile radius of GU2 7YB.

The Complete and Standard service offer includes all makes and models up to engine size 2000cc. Additional surcharges will apply for larger engine sizes.

** Free Brake and Battery Check with Complete Service and Complete Service with MOT



WHY SHOULD YOU CHOOSE SEYMOURS?



Partner Owned & Run

Because we're Partner run, the owner of the business will be personally involved in your sale.



20 Seymours Offices

All the care and attention of a local independent with the vast selling power of our network.



Knowledgeable Local Staff

Our staff live nearby to offer unrivalled local knowledge and expertise when you move.



Unrivalled Marketing

Attract the best buyers with high quality marketing photos, videos, brochures and social media.



National & London Buyers

Get exclusive access to buyers from 800 Guild member agents across the UK and London.



Property Finder Services

Sell with Seymours and we'll prioritise your search to find your dream home.



Supporter of Local Charities

Enjoy peace of mind working with an agent that supports local schools and charities.



No.1 In Surrey

We're proud to help more people move in our local community than any of our competitors.

If you're thinking of selling, please call us for a **free market appraisal of your property.**



Lloyd Moss
Partner



James Taylor
Partner

Seymours Horsell

01483 755222 | sales@seymours-horsell.co.uk



Seymours

Printed by Knaphill Print Co. Ltd. Tel: 01483 474900