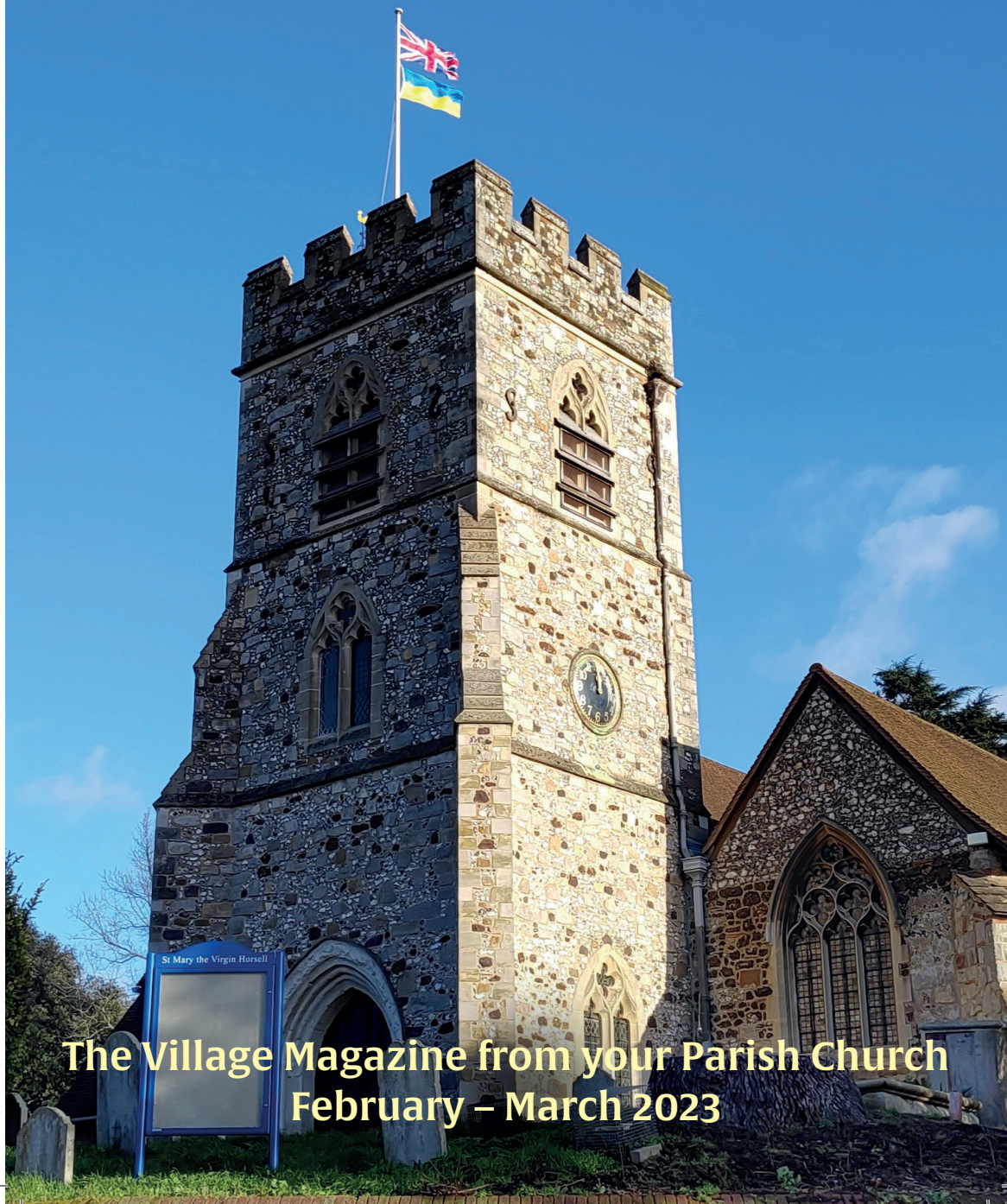


# Horsell Matters



**The Village Magazine from your Parish Church  
February – March 2023**

# HORSELL DIRECTORY

<b>St Mary's Church</b>	<a href="http://www.stmarys-horsell.org.uk">www.stmarys-horsell.org.uk</a>	
	Baptisms, Weddings or Funerals	772134
<b>Parish Office open</b>	Helen Gravette Tues 9am-4pm, Wed & Fri 9am-1.00pm stmaryshorsell@btinternet.com	772134
<b>Vicar</b>	Rev'd Dmitry Lutsenko <a href="mailto:vicar@stmarys-horsell.org.uk">vicar@stmarys-horsell.org.uk</a>	755618
<b>Church Wardens</b>	Brian Sheriff	474975
	Michael Couper	770920
<b>Treasurer</b>	David Leach	823439
<b>Cathedral Link</b>	Gill Saville	773799
<b>Pastoral Assistant</b>	Janet Johnson	591756
	Margaret Johnson	762481
	Hilary Mills	772952
	Coral Colclough	747481
<b>JAM (Jesus and Me)</b>	Rev'd Dmitry Lutsenko (3+) 10am most Sundays	772134
<b>Babies and Toddlers</b>	Angela Murphy, St Andrew's Room Tues 9.30am to 11.30am, term time	832943
<b>Twinkle Tots</b>	Mike Couper, St Andrew's Room Thurs 9.30am to 11.30am, term time	772134
<b>Bellringers</b>	Avril Blagbrough [occasional] Tues. evening practice	767421
<b>Trinity Methodist Church</b>	<a href="mailto:office@trinitywoking.org.uk">office@trinitywoking.org.uk</a>	730754
<b>Horsell Evangelical Church</b>	Revd Andrew Bents	822259
<b>To Book the Village Hall</b>	Paul Bowyer	764047
<b>Parish Institute</b>	<a href="http://www.horsell-parish-institute.org.uk">www.horsell-parish-institute.org.uk</a>	772134
<b>Horsell Village School</b>	Infants Head Teacher - Mrs Reeve	714804
<b>Horsell C of E School</b>	Junior Head Teacher - Mrs C Wand	761531
<b>Woking High School</b>	Head Teacher - Mrs M Walter	888447
<b>St Andrew's School</b>	Headmaster – Mr D Fitzgerald	760943
<b>Horsell Care</b>	Helpline	730740
<b>Residents Association</b>	Alan Taylor	ajrolyat@gmail.com
<b>Scouts, Beavers, Cubs</b>	Ali Stubbs <a href="mailto:gsl@horsellscouts.org.uk">gsl@horsellscouts.org.uk</a>	07734 424568
<b>Explorer Scouts (14-18 Yrs)</b>	Roy Thompson <a href="mailto:explorers@woking.scouts.host">explorers@woking.scouts.host</a>	
<b>Guides &amp; Brownies</b>	<a href="http://www.girlguiding.org.uk/information-for-parents">www.girlguiding.org.uk/information-for-parents</a>	
<b>WI Horsell Afternoon</b>	Alison Evans-Wyatt <a href="mailto:amevans705@gmail.com">amevans705@gmail.com</a>	765570
	Meets on 1 <sup>st</sup> Thursday at 1.45pm in the Village Hall	
<b>WI Horsell Evening</b>	Mrs Joan Cox	760783
	Meets on 4 <sup>th</sup> Tuesday at 8.00pm in the Village Hall	
<b>Woking Police Station</b>	dial 101 from mobile or landline	

# Lent

**L**ent is a period of 40 days during which Christians remember the events leading up to and including the death of Jesus Christ, whose life and teachings are the foundation of Christianity. The 40-day period is called Lent after an old English word meaning 'lengthen'. This is because of the time of year when it happens, when the days start to get longer, as we approach Summer. It is a time of reflection and of asking for forgiveness, and when Christians prepare to celebrate Jesus's resurrection at the feast of Easter, which comes at the very end of Lent. On Ash Wednesday, churches hold special services, at which worshippers are marked with ash. This is a symbol of death and remembering bad things that we have done (where the day gets its name from). Typically, the ash is made from burning special crosses made out of palm wood, which were used in church services on the previous year's Palm Sunday. It is sometimes mixed with special oil.



Millions of people 'give up something' during Lent as a sign of sacrifice and

to test their self-discipline. Christians believe that this is to represent Jesus Christ's sacrifice when he went into the desert to pray and fast for the 40 days before later dying on the cross. In the Bible's New Testament, while Jesus was there, Satan tempted him to turn away from God

and worship him instead, but Jesus refused to, which is why people might give something up, to test their own self-discipline too. It is a quiet season for Christians to stop, think and look at their own lives – perhaps they can think anew about their way of praying, living or searching for answers they have been trying to understand. It is a good chance to make life a little slower, calmer and thoughtful. Try to make a determinate effort to have, say, 5-10 minutes per day to stop and just think how your life might be altered and improved.

Mike Couper, Church Warden

## **ST MARY'S CHURCH REGISTERS**

### **Burials and Cremations**

*We offer our sympathy to the families and friends of those who have died:*

Jennifer Hawkins   Eric Howard   Jennifer Scott   Barry Shephard

### **Baptism**

*We welcome into the family of the church:*

Oliver & Emily Presswe

## ST MARY'S CHURCH DIARY **FEBRUARY 2023**

<b>Wed 1st</b>	11.00am 11.30 am-4pm 8.00pm	Holy Communion Private Prayer Engine Room House of Prayer
<b>Thurs 2nd</b>	9.30am-11am 11am-4pm	Twinkle Tots Private Prayer
<b>Fri 3rd</b>	8.45am-12noon	Pop-in-Coffee
<b>Sun 5th</b>	8.00am 10.00am	Holy Communion (CW) All Age Morning Worship & Baptism
<b>Tues 7th</b>	9.30am-11.30am 11.00am-4pm 2.00pm 4.00pm	Baby & Toddler Group Private Prayer Service at Kettlewell House Prayer at 4pm – at home
<b>Wed 8th</b>	11.00am 11.30am-4pm	Holy Communion Private Prayer
<b>Thurs 9th</b>	9.30am-11am 11.00am-4pm	Twinkle Tots Private Prayer
<b>Fri 10th</b>	8.45am-12noon	Pop In Coffee
<b>Sat 11th</b>	1.00pm	Renewal of Wedding Vows
<b>Sun 12th</b>	8.00am 10.00am 6.30pm	Holy Communion (BCP) Parish Communion Contemplative Meditation
<b>Tues 14th</b>	9.30am-11am 11.00am-4pm 4.00pm	NO Baby & Toddler Group Private Prayer Prayer at 4pm – at home
<b>Wed 15th</b>	11.00am-4pm	Private Prayer
<b>Thurs 16th</b>	9.30am-11am 11.00am-4pm	NO Twinkle Tots Private Prayer
<b>Fri 17th</b>	10am-12noon	Pop In Coffee
<b>Sun 19th</b>	8.00am 10.00am 4.00pm	Holy Communion (CW) Parish Communion Messy Church
<b>Tues 21st</b>	9.30am-11.30am 4.00pm 11.00am-4pm	Baby & Toddler Group Prayer at 4pm – at home Private Prayer
<b>Wed 22nd</b>	11.00am-4pm 8.00pm	Private Prayer Ash Wednesday Communion Service with hymns
<b>Thurs 23rd</b>	9.30am-11am 11.00am-4pm	Twinkle Tots Private Prayer
<b>Fri 24th</b>	8.45am-12noon	Pop In Coffee
<b>Sun 26th</b>	8.00am 10.00am 6.30pm	Holy Communion (BCP) Parish Communion Peaceful Prayer & Praise
<b>Tues 28th</b>	9.30am-11.30am 11.00am-4pm 4.00pm	Baby & Toddler Group Private Prayer Prayer at 4pm – at home

## ST MARY'S CHURCH DIARY **MARCH 2023**

<b>Wed 1st</b>	11am-4pm 7pm-8.15pm 8.15pm	Private Prayer Talking Jesus Lent Course Session 1 Engine Room House of Prayer
<b>Thurs 2nd</b>	9.30am-11am 11.00am-4pm	Twinkle Tots Private Prayer
<b>Fri 3rd</b>	8.45am-12noon	Pop In Coffee
<b>Sun 5th</b>	8.00am 10.00am	Holy Communion Service (CW) All Age Morning Worship
<b>Tues 7th</b>	9.30am-11.30am 11.00am-4pm 2.00pm 4.00pm	Baby & Toddler Group Private Prayer Kettlewell House Service Prayer at 4pm – at home
<b>Wed 8th</b>	11.00am 11.30am-4pm 7pm-8.15pm	Holy Communion Private Prayer Talking Jesus Lent Course Session 2

## ST MARY'S CHURCH DIARY **MARCH 2023**

<b>Thurs 9th</b>	9.30am-11am 11.00am-4pm	Twinkle Tots Private Prayer
<b>Fri 10th</b>	8.45am-12noon	Pop in Coffee
<b>Sun 12th</b>	8.00am 10.00am 6.30pm	Holy Communion Service (BCP) Parish Communion Contemplative Meditation
<b>Tues 14th</b>	9.30am-11.30am 11.00am-4pm 2.00pm 4.00pm	Baby & Toddler Group Private Prayer Service at Horsell Lodge Prayer at 4pm – at home
<b>Wed 15th</b>	11.00am-4pm 7pm-8.15pm	Private Prayer Talking Jesus Lent Course Session 3
<b>Thurs 16th</b>	9.30am-11am 11.00am-4pm	Twinkle Tots Private Prayer
<b>Fri 17th</b>	8.45am-12noon	Pop In Coffee
<b>Sun 19th</b>	8.00am 10.00am 4.00pm	Holy Communion (CW) Mothering Sunday Family Communion Messy Church
<b>Mon 20th</b>	8.00pm	PCC Meeting
<b>Tues 21st</b>	9.30am-11.30am 11.00am-4pm 4.00pm	Baby & Toddler Group Private Prayer Prayer at 4pm – at home
<b>Wed 22nd</b>	11.00am-4pm 7pm-8.15pm	Private Prayer Talking Jesus Lent Course Session 4
<b>Thurs 23rd</b>	9.30am-11am 11.00am-4pm	Twinkle Tots Private Prayer
<b>Fri 24th</b>	8.45am-12noon	Pop In Coffee
<b>Sat 25th</b>	7.00pm	Octavian Singers Concert
<b>Sun 26th</b>	8.00am 10.00am 6.30pm	Holy Communion (BCP) Parish Communion Peaceful Prayer & Praise
<b>Tues 28th</b>	9.30am-11.30am 11.00am-4pm 4.00pm	Baby & Toddler Group Private Prayer Prayer at 4pm – at home
<b>Wed 29th</b>	11.00am-4pm 7pm-8.15pm	Private Prayer Talking Jesus Lent Course Session 5
<b>Thurs 30th</b>	9.30am-11am 11.00am-4pm	Twinkle Tots Private Prayer
<b>Fri 31st</b>	8.45am-12noon	Pop In Coffee

## ST MARY'S CHURCH DIARY **APRIL 2023**

<b>Sun 2nd</b>	8.00am 10.00am	Holy Communion (CW) All Age Morning Worship
<b>Tues 4th</b>	9.30am-11.30am 2.00pm	NO Baby & Toddler Group Service at Kettlewell House
<b>Wed 5th</b>	11.00am 11.30 am-4pm 7pm-8.15pm	Holy Communion Private Prayer Talking Jesus Lent Course Session 6
<b>Thurs 6th</b>	9.30am-11am 11am-4pm 8.00pm	NO Twinkle Tots Private Prayer Maundy Thursday Communion
<b>Fri 7th</b>	9.30am 10.30am-12noon	<b>Good Friday Family Service</b> Pop-in-Coffee with hot cross buns
<b>Sat 8th</b>	8.00pm	<b>Easter Vigil and renewal of Baptism Vows</b>
<b>Sun 9th</b>	9.30am	<b>Family Easter Day Communion</b>



**St Mary's Church, Horsell**

@StMarysChurchHorsell

*All correct at the time of going to print*

For further details please look at our website:  
[www.stmarys-horsell.org.uk](http://www.stmarys-horsell.org.uk)

# World Day of Prayer

## First Friday in March

---

A women-led, global, ecumenical movement – ‘I have heard about your faith.’ A service written by the Christian women of Taiwan.

---

**Friday 3 March 2023, St Andrew’s Goldsworth Park, 10.00 am**

Every year on the first Friday in March, Christians around the world join in prayer. Beginning on the International Dateline, in Samoa, a great wave of prayer sweeps across the Pacific, touching Fiji and New Zealand. It rolls on through Asia – Japan, the Philippines, Korea, Bangladesh, and then the Middle East.

The wave reaches the shores of Europe as the day dawns here. Across the Atlantic it moves onwards – the Caribbean, all the Americas, and on to the Pacific again, until the sun finally sets over American Samoa, where the final service takes place and a worldwide circle of prayer is complete, 38 hours after it began.

More than 120 countries take part, in more than 90 different languages. Each year the service is written by the Christian women of a different country. In 2023 it is the turn of Taiwan. This is an island rich in natural resources and culturally diverse. Through the words of the service the women of



Taiwan will share the issues they face, geographically, politically and socially, and also their hopes for the future.

For many years Taiwan has been caught in a superpower struggle. It has been isolated internationally for decades and as of April 2022 only 13 of the 193 UN member states have recognised Taiwan as a sovereign country. China continues to claim Taiwan as part of its territory although a large majority of Taiwanese reject reunification with China. In recent months China has begun to harass Taiwan on a regular basis, the risk of conflict being higher than it has been for many years. The people of Taiwan are very much in need of our prayers.

We have an opportunity to share in this act of worship locally.

On **Friday 3 March** the Woking World Day of Prayer service will be held at **St Andrew’s Goldsworth Park at 10.00 am**. Everyone is welcome to come and join in.

# A Prayer For Lent

O Lord Jesus Christ, by your almighty power you opened the eyes of the blind and showed yourself to them. Turn our eyes away from worthless things, and lead us to love you sincerely, through your mercy, O our God, you are blessed, and live and govern all things, now and forever. Amen.



## Churchyard Cat

There is a new arrival in my churchyard: a Cedrus Atlantica Glauca Pendula has been planted to replace the old Atlantic Cedar which we lost last year after 167 years. Rather a long name for such a small sapling. But in 100 years it should be magnificent, although not something I will see, even with my nine lives. Interestingly, a group of my humans also planted a hedge of mixed native deciduous trees along the nearby boundary wall; hopefully this will stop small humans falling over the edge. It will make a perfect home for many a tasty morsel and I can't wait for that to grow up; I will keep a close eye from my perch on the old tree stump. Not that much will be scampering around in



February, traditionally the coldest and bleakest month of the year, beginning at Candlemas when my humans bless all the candles to be used in church in the coming year - then it won't be long until Ash Wednesday, when I see people exit church with a cross of ashes on their foreheads (not for my ginger fur, thank you) followed by Lent and March with the promise of spring.

# St Mary's – Looking Ahead

In recent articles we have considered the governance of our church and how it fits into the Church of England. But what does the future hold? Nationally the Church of England has set a new focus on being “Humbler, Simpler, Bolder”. The Guildford Diocese has recently evolved the Diocesan vision of **Transforming Church, Transforming Lives**, and the three priorities are Growing Disciples, Growing Diversity and Growing Community. This vision will vary from Parish to Parish, where it will be reflected in local Church Development Plans (CDP). Our CDP was recently reviewed by the Head of the Diocesan Mission Enabling Team and formed the basis for this year’s Archdeacon’s Visitation.

Recently, the Archdeacon reviewed all aspects of our Church activity and expressed great satisfaction at the progress that had been made under the mission of Revd. Dmitry, he also offered full support for our plans.

At St Mary’s we aim to develop and expand:

- our individual prayer offerings;
- to provide alternative styles of service that meet the needs of all in our parish;



- to grow our Sunday school, baptismal and other child focused activities;
- to grow our extensive school-based links and pre-school sessions with parent focused activities;
- to develop our successful Friday morning (warm space) friendly community sessions with coffee, cake and chat; and
- to develop a dedicated youth offering, to include recruiting a Children and Families’ Ministry Lead.

We also plan to develop and modernise our facilities to ensure that we remain a focal point of Horsell, as has been so for the past millennium.



**NEXT OPEN MORNINGS**  
 Friday 10th March  
 Friday 12th May  
 9am – 11am  
 REGISTER NOW FOR 2023, 2024 AND BEYOND

Because your child deserves to be  
**creative**  
 Outstanding facilities and an imaginative approach to teaching.

Please register your interest online:  
 W: [www.st-andrews.woking.sch.uk](http://www.st-andrews.woking.sch.uk)  
 E: [admissions@st-andrews.woking.sch.uk](mailto:admissions@st-andrews.woking.sch.uk)  
 T: 01483 760943

**ST. ANDREW'S**  
**X**  
 SCHOOL · WOKING  
 INDEPENDENT DAY SCHOOL FOR GIRLS & BOYS AGED 3-13

~ Developing potential for life ~

[@StAndrewsWoking](#) [@standrewschoolwoking](#) [@standrewschoolwoking](#)

**FRAZERS SURVEYORS**

Your Local Chartered Surveyors

RICS HomeBuyer Reports

Building Surveys

Valuations

All Types Of Buildings

Over 30 Years Experience

Call Or Visit Us Today For A Competitive Quote

Frazers Surveyors Ltd  
 Thornash House, 37 High St, Horsell, GU21 4UR  
 T: 01483 730909 E: [surveying@frazers.co.uk](mailto:surveying@frazers.co.uk)  
 [www.frazers.co.uk](http://www.frazers.co.uk)




**Yoga with Julie**  
*Registered Yoga Teacher with Yoga Alliance*

A Hatha style class where we connect with the breath, creating space in the body and mind. **Suitable for ALL levels**

Benefits of Yoga include increased flexibility, builds strength, energises, provides relaxation and helps to quieten the mind.

**Bring a bottle of water, a mat and leave the rest to me. Limited mats available to hire at £1 per class.**

**Venue:** Trinity Methodist Church, Brewery Road, Woking

**When:** Tuesdays and Thursdays


**Time:** 9:30 am – 10:30 am

**Cost:** £49 for 6 sessions or £10 per drop in.



**Contact: Julie 07850 423585**

**ELECTRICIAN/HOME MAINTENANCE**



Sockets, lights to full re-wires. Painting, tiling, and plaster repairs etc.

**No job too small. Reliable.**

**Tim Dear**  
 01483 762967  
 or 07973 777332

# The Results: Christmas Tree Festival

A successful Christmas village event with over 1000 visitors to the church on the two days of Friday 2nd and Saturday 3rd December. Thank you to all our enterprising contributors and everyone who enjoyed visiting the exhibition.



*The Horsell Village (infants) School's winning entry*

874 votes were cast, and these are the results:

<b>1st school</b>	<b>Horsell Village School with "Light in the Darkness"</b>
2nd school	St Andrews Pre-prep with "Fores-tree"
3rd school	Horsell C of E Junior school Young Carers with "Young Carer Super Stars"
<b>1st preschool</b>	<b>Young World Pre School with "Our Queen Tree"</b>
2nd preschool	Rainbow Child Care with "Let it Snow"
3rd preschool	Bright Horizons Teddies Woking Day Nursery and Pre-school with "A Crafty Christmas"
<b>1st community group</b>	<b>Horsell Village WI with "Royal Memories"</b>
2nd community group	Woking Creative Stitchers with "The Spelling tree"
3rd community group	(joint) Horsell Afternoon WI with "One Year On"
<b>1st family</b>	<b>The Butler family with "The Little Tree with a Big Heart"</b>
2nd family	Susannah and Emma Wicks with "Happy Catmas"
<b>1st individual</b>	<b>Kay Yung with "Crochet Amigurutree"</b>
2nd individual	Mr Donald Duck with "Have a quacking Christmas"
3rd individual	Philip Hamilton with "Hand Turned"
<b>1st church group</b>	<b>Horsell Bellringers with "The Cat(e)ree"</b>
2nd church group	Messy Church Families with "Messy Advent Pudding Tree-ts"
3rd church group	Twinkle Tots with "Twinkle The Bear and his Tree"



*The Little Tree with a Big Heart*

Also, someone wrote "All beautiful – inspiring – thank you" on their voting slip. A total of £1,650 was raised to be put towards new lighting in the church and the renovation plans for the St Andrew's Room.



How does Moses make his coffee? Hebrews it.

# Let's Talk About Jesus

---

St Mary's will be running a 'Talking Jesus' Evangelistic course during Lent.

---

**F**or six consecutive weeks, always on a Wednesday, starting from 1st March and finishing on 5th April, we will meet from 7-8.15pm in the St Andrew's Room.

The aim of the course is to help us to be more confident in sharing our own stories of how we came to know Jesus and the difference He has made in our lives since. Each week we will watch a short teaching session and then discuss it in small groups before re-joining

as one group to share our learning experiences.

All are welcome!

Ideally, please commit to all six weeks, however you are welcome to attend as many sessions as you can or wish. Please let the Parish office know (Tel. 772134) if you are planning to attend.

I look forward to seeing you.

Dmitry Lutsenko



**Home Improvements**

**PVC • Aluminium • Timber**

**Windows • Doors • Roof Lanterns • Bi-Folds**

**Orangeries • Garden Rooms • Conservatories**

01483 727 474 | sales@krbltd.com  
109 High Street | Horsell | Surrey | GU21 4SY  
76 High Street | Old Woking | Surrey | GU22 9LN



# Eco Church

---

Did you know that St Mary's is an Eco Church?

---



In line with the Church of England's aim to becoming Carbon Neutral by 2030, last year St Mary's signed up to become an "Eco Church", and joined the 'A Rocha UK Eco Church programme', which equips churches to care for creation. The programme provides a framework to support churches and their leadership in taking practical action to care for God's earth, including a toolkit of resources and online award surveys. For more info visit <https://ecochurch.arocha.org.uk>

After assessing all aspects of our impact on the environment and reporting them to A Rocha, we were awarded a bronze level of achievement with some aspects of our activity, such as our care of the churchyard, with its 500yds of high biodiversity hedging, achieving Silver. Guildford Diocese now has the largest number of Churches signed up to the Eco Church programmes, and we plan to play our part as a leading exponent of Eco principles.

Our Vicar has organised and delivered a teaching series on creation, Home Groups have been reflecting on caring for creation and Sunday worship has focused on God's Earth. We are also looking to reduce energy consumption in our buildings with more efficient boilers and solar panels, and have asked members of the congregation to consider their lifestyle and what actions they can take to reduce their impact on the environment by adopting **Reduce, Reuse and Recycle** principle. In Community engagement we recognise the importance of involving young people, who tend to be more Eco savvy than older generations.

The Eco Church Group would like to hear from you, if you would like to become involved and help us with our aim of achieving further progress on our Eco journey in 2023. Just contact the Church Office to volunteer.



Walk and Worship: go for a walk in nature and note all the signs of the season. Use this time to reflect on the changes you see and be thankful to our creator God.

# You'll be in good company at Horsell Lodge



Scan to find  
out more

Inspected and rated

Good



## Discover Horsell Lodge Care Home

Whether you enjoy afternoon tea with family, getting creative with arts & crafts or pulling up a chair with a favourite novel, there's something for everyone. Plus you'll have the added reassurance of help when you need it.

Freephone

0808 223 5401

Online

[caringhomes.org](https://www.caringhomes.org)

Kettlewell Hill, Woking, Surrey GU21 4JA

Horsell Lodge

CARING HOMES

# News from St Andrew's School

Where children do more than just wear a label; they learn Kindness, Respect, Positivity, Creativity, and Endeavour.

On 30 November for our Patronal Service and then on 13 December for our Carol Service, the pupils, staff and parents of St Andrew's School were grateful to take the short and - if you remember it - very chilly stroll down Wilson Way, through the churchyard, and into the peaceful setting of St Mary's, giving us valued time for worship and contemplation.

Most of our Year 8s, who will be leaving St Andrew's this summer, received - at our patronal festival - a copy of the New Testament, Psalms and Proverbs, kindly provided by Good News for Everyone. Through music, readings, hymns, prayers and a sermon we were able to hope that the attributes and values shown in the life of Saint Andrew - and discovered while at St Andrew's School - are woven into the fabric of their hearts, becoming a label they are proud to wear. We believe that our newly minted set of school values, chosen by the pupils themselves, encompass such an aim: Kindness, Respect, Positivity, Creativity, and Endeavour.

In our Festival of Nine Lessons and Carols we were able to tell the Nativity story through traditional readings and carols, sung by year groups, the whole school, or one of our many choirs,



*One of the Heads of School sings from Handel's Messiah during the St Andrew's Day Service*

giving us time to meditate on the words and music inspired by the profound message of a servant King born to give second birth. It is these moments - when the spirit of community and humanity, demonstrated so appositely at the manger itself, is most strongly felt - are always the most highly anticipated in any school calendar. Only eleven months to wait, now!

Henry Deacon, Head of Years 7&8,  
Head of Theology, Philosophy and Religion

# Can you help us find our Children and Families' Ministry Lead?

Do you know someone who would be interested?

Is this the opportunity God is calling you for?

For more information please visit [www.stmarys-horsell.org.uk](http://www.stmarys-horsell.org.uk)



## Church Clock

12 noon or midnight – or a farthing a day.

You may have noticed the hands on the tower clock are now fixed at mid-day after being a bit skew whiff for the past three years. The fixed time change has been made to avoid a potential fine: apparently if a public clock has stopped and is not set at 12:00, the owners can be fined a farthing a day - 38p per year in current money! The Gillett and Bland clock was installed in 1873, only 14 years after Big Ben was the first to be built to the same Denison design.

Gillet and Bland of Croydon became Gillett and Johnston of Croydon in

1877, and it is their engineers who will assist us to get the mechanism going and

regulating it to keep an accurate time. Naturally there is a cost involved and St Mary's will be asking for donations once we receive permission to go ahead with work on such a historic timepiece. Any timely donations will be gratefully received.



*Tower Clock*



**What's On in December and January**  
for children, young people and families at St Mary's  
Your Parish Church in Horsell

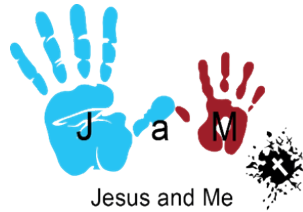
**Sunday Morning  
All-Age Worship**

Lively songs, thought-provoking Bible stories, fun and family fellowship at 10am



On the first Sunday  
of every month  
5th February  
5th March  
2nd April

**Jesus and Me**



A time for children aged 3+ to learn and worship together during our 10am Sunday services  
Every Sunday except when we have All Age Worship or school holidays



4.00pm to 5.30pm  
19th February  
19th March  
16th April

**Fun activities for all ages**  
**Please bring your own picnic tea**

**Friday Pop-in Coffee**

9am until noon



Why not drop in for a cuppa, a piece of cake and a chat once you have done the school drop-off?  
(Toys available)

For more details about any of our services and activities  
please contact the Parish Office on 01483 772134  
or email [stmaryshorsell@btinternet.com](mailto:stmaryshorsell@btinternet.com)



## **Tuesday Morning Baby and Toddler Group**



Weekly in term time  
9.30am to 11.30am

Pop in for a coffee, chat, play  
and meet new friends

## **Thursday**



## **Twinkle Tots**

For babies and toddlers  
Group

Weekly in term time  
9.30am to 11.00am

Come and make friends,  
enjoy play, craft,

## **Stay in Touch**

Our Parish Office is open

Tuesday 9am-4pm

Wednesday & Friday 9am-1.00pm

Telephone: 01483 772134

Visit our website at:

[www.stmarys-horsell.org.uk](http://www.stmarys-horsell.org.uk)

Follow us on Facebook



[https://www.facebook.com/](https://www.facebook.com/StMarysChurchHorsell)

[StMarysChurchHorsell](https://www.facebook.com/StMarysChurchHorsell)

Or join our mailing list



## **Talking Jesus Evangelistic Course**

Wednesdays

1st, 8th, 15th, 22nd, 29th

March & 5th April

7pm-8.15pm

Talking  
Jesus

St Mary's Church, St Andrew's Room

**ALL WELCOME**

See page 11 for more info

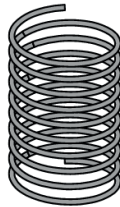
# COLOUR AND LEARN

# SPRING is coming!

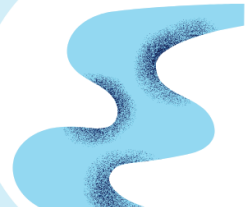
What **springs** to your mind when you hear the word 'spring'?



spring season



a coil spring



a spring of water

Add the word '**spring**' to complete the sentences:

1. To ..... into action means to start doing something quickly.
2. To have a ..... in your step means to walk with energy and confidence.



What else **springs** to your mind when you hear the word 'spring'?

# Easter Week at St Mary's

Join us as we remember God's amazing  
love, grace and goodness

## Palm Sunday

Celebratory Parish Communion  
8am Holy Communion (CW)  
10am Sunday 2nd April



## Maundy Thursday

8pm Thursday 6th April  
Share the Lord's Supper  
and remember His life of service

## Good Friday

9.30am Family Service  
followed by hot cross buns



## Saturday 8pm

## Longing for Light

A short candlelit Easter Vigil Service with the  
opportunity to renew our baptismal promises



## Easter Sunday

9.30am Celebratory Family  
Communion Service  
"He is Risen!"



Saint Mary the Virgin  
— Horsell —

# Gardening Matters

Elna Broe provides gardening tips with some personal reflections.

**A**t this time of year I love to see new shoots pushing through the earth, buds appearing on shrubs and trees and birds carrying nesting material (they are forgiven for taking pieces of my hanging basket liners).

With longer daylight hours, seed planting beckons. Hardy annuals such as cosmos and nasturtiums (both drought tolerant) can be grown under cover in February along with my broad beans, peas, tomatoes and salad leaves. Early beetroot, clearly not a favourite of mice, slugs or woodpigeons, can be sown direct whilst emerging rhubarb stems can be covered with a pot to force stalks. A repeat planting of seeds in March will extend the growing season. Towards the end of March, the larger vegetable seedlings (apart from tomatoes, which like to stay cosy for a few more weeks)



can be planted out, fleece to hand in case of frost. Seed growing underway, March is a good time to cut back and thin buddleias. It's nice to see them looking neater but I'll be cautious when tidying up elsewhere. Dormant butterflies in dense ivy and shed corners need to be left alone whilst other little creatures will be sheltering amongst leaves and twigs.

Jobs completed, I'll sit down with the latest Garden Visitor's Handbook from the National Garden Scheme ([www.ngs.org.uk](http://www.ngs.org.uk)) to plan some garden visits. It's a great way to spend an afternoon - the chance to see someone else's much loved garden and usually the opportunity for a piece of home-made cake and a cuppa, proceeds going to caring charities. I always come back with ideas - sometimes plants too - what could be better?



Did Noah include termites on the Ark?

## Horsell Matters: Next Edition April / May 2023

**Copy** to be sent by **Wednesday March 1st 2023** by email please to: [stmaryshorsell@btinternet.com](mailto:stmaryshorsell@btinternet.com)  
**Advertising:** please contact: Sales at Knaphill Print, Tel: 01483 474900 or email: [sales@knaphillprint.com](mailto:sales@knaphillprint.com)  
The Horsell Matters team extend their grateful thanks to **Knaphill Print Co Ltd**  
for producing this not-for-profit Parish magazine

*The views expressed by contributors to the magazine are not necessarily those of the PCC of St. Mary's Church.  
All advertisements are accepted in good faith.*

# New Growth

**E**arlier this year, our beloved 167-year-old cedar tree had to be felled. This was an iconic tree for the village and there was a strong desire to replace it. It also left a large area which was becoming overgrown.

I heard about the Queen's Green Canopy scheme, discovered community groups were encouraged to get involved and that The Woodland Trust were offering free

trees. After getting permission from the archdeacon, I successfully applied for 30 saplings to form a small hedge and bought a cedar tree.

On Saturday 19th November, a group of 10 volunteers from the community planted the tree and hedge, ably supported by an 11th volunteer who provided us with hot drinks and homemade lemon drizzle cake to keep the workers well nourished.

It is humbling to consider that the trees planted today could shape the landscape in 100 years' time, creating



*Many hands make light work*

a wonderful living legacy and lasting tribute to Her Majesty Queen Elizabeth II.

The cedar tree we planted is currently the same height as my six-year-old daughter. I shall enjoy watching them grow together.

David Leach,  
Treasurer, PCC



*Which is taller – the young cedar or David's 6-year-old daughter?*



“A (wo)man has made at least a start on discovering the meaning of human life when (s)he plants shade trees under which (s)he knows full well (s)he will never sit.” D. Elton Trueblood

# Recipe: Cassoulet, the easy way

## A warming, family size, quick and easy dish.

You will need a large non-stick frying pan with a lid. Preparation and cooking time is approximately 30 minutes. Serves 4 (2 sausages each) and involves no oven time.

### Ingredients

1 tsp olive oil  
1 x 400g pack Toulouse\* sausages  
(8 in the pack if cooking for 4)  
1 onion, finely chopped  
1 large carrot, finely diced  
1 celery stick, finely diced  
2 garlic cloves, finely chopped  
1 x 400g tin cannellini beans, drained  
and rinsed  
3 tbsp sundried tomato paste  
1 bay leaf  
250ml hot chicken stock  
(use a stock cube)  
A handful of flat-leaf parsley, roughly  
chopped

Heat the oil in a non-stick frying pan until hot. Turn the heat down to medium, add the sausages and fry for 10 minutes, turning occasionally, until golden. Remove and place on a plate. Add the chopped onion, garlic, diced carrot and celery to the pan; cover with a lid and cook gently for 10 minutes. Meanwhile, take a tablespoon of the cannellini beans and, using a fork, mash with the tomato paste (it does not need to be smooth). After the 10 minutes your onion mix will have softened, add the bean and tomato



paste. At this point you can return the sausages to your frying pan and add the bay leaf and the rest of the beans. Also add the stock and season with a pinch of sea salt and black pepper. Give it all a gentle stir and bring the mix up to a gentle boil. Once bubbling, reduce the heat and simmer, uncovered, for a further 10 minutes until the liquid has reduced and the sausages are cooked through. Season to taste.

Serve on warmed plates, decorate with fresh parsley and serve with crusty bread (great for dipping into any leftover sauce on your plate at the end, when mum's not looking).

\*You could use another sausage variety if you prefer, but the Toulouse sausage will give a more authentic flavour to your cassoulet.



Who knew that one of the hardest things about being an adult is working out what to cook for dinner every single night for the rest of your life.

# Do you enjoy...?

- Board games
- Playing the piano
- Reading poetry
- Listening
- Chatting
- Craft
- Throwing ball for a dog
- Walking
- Pottering in the garden
- No bake cookery
- Balloon games
- Quizzes
- Knitting



If so... why not come to enjoy these interests at Kettlewell House Nursing Home and enhance the lives of people who live here?

Any age  
Any time  
Any frequency

**Please contact Kate:**  
on **01483 221900 or 756116**

**AUREM CARE**  
A Salutem Company 



- Lawn Care
- Tree Care
- Hedge Cutting
- Fencing
- Weeding
- Feeding
- Beds
- Borders
- Planting
- Regular Maintenance
- Logs for sale

Does your garden need the personal touch?  
Local gardener now working in your area  
available to assist with all your garden needs.

For all enquiries please contact Julie on:  
**01483 836490 / 07850 423585**

Fully Insured, References available.

## THE IRON LADY



39, High Street, Woking,  
GU21 4UD

T: 07900 567000

E: [kassie44@hotmail.com](mailto:kassie44@hotmail.com)

# Book Review

---

## SNAP by Belinda Bauer – longlisted Booker prize crime thriller

---

**O**ur protagonist is Jack, eldest brother to Joy and Merry, whose pregnant mother has been murdered and whose father has abandoned the three children through grief and hopelessness. Jack resorts to crime to support his siblings and educates both girls to pretend they live a normal life, their dad's absence owed to him being at work, to keep the siblings together and out of the care system.

Jack is known by the police as Goldilocks – so called because not only does he break into temporarily unoccupied houses to loot easily sold-on items for cash, he eats any nutritious food available and finds a child's bed to sleep in. His sleep is disturbed by dreams of not quite finding and being reunited with his mother. He always sleeps with his shoes on, having first secured his exit for a quick getaway if the owners return. On one burglary night, Jack discovers a knife – he thinks the knife that was used by the murderer to kill his mother - and from then on, he determines to use the police to help solve the hitherto three-year-old cold case to secure a conviction of the killer.



Quite why this novel was long listed for a Booker prize is a moot point. The novel is not what this reviewer would describe as literature, the normal highbrow writing that Booker nominees aspire to. It is an easy read, has moments of being a page turner, and illustrates how children can slip through the net.



**STRUGGLING TO KEEP WARM THIS WINTER?**

**Woking Lions** are helping people in Woking and surrounding villages struggling to pay their fuel bills, and have possibly built up debt to their energy supplier.

We can help **heat your home** using funds given by people who have donated their fuel allowance

Please contact Citizens Advice and speak to an advisor  
**Woking 0800 144 8848**



# Christingle Services correction

---

## From Moravian church to Horsell, thanks to a MU member

---

In our last edition of Horsell Matters we incorrectly attributed the introduction of the Christingle services at St Mary's to the Women's Institute, for which we apologise. In fact, it was the members of the Mothers' Union, then a flourishing group at St Mary's, who suggested that the service should be introduced. The service originated in the Moravian church, closely linked to the German Lutheran church. A faithful MU member at the time was Irmgard Weight, who as a German former

Lutheran was rather more familiar with the service than most people in the UK were at that time, and Glenys Craig remembers her being very enthusiastic about the proposal. The members of the MU set about preparing the oranges for the first Christingle at St Mary's wondering how popular it would be, but the service took off beyond anyone's wildest expectations, and the rest, as they say, is history.



## RESTORE OFFICIAL

— A CLEANER ALTERNATIVE —

### PROFESSIONAL CARPET, UPHOLSTERY AND RUG CLEANING

**RESTORE OFFICIAL** is environmentally aware, using child and pet friendly products and the latest equipment to achieve the highest possible quality and long lasting results for your home and office furnishings.

**Leather** – we truly believe care and maintenance is key to prolonging the life of your leather.

Our technique and treatment effectively removes build-up of every day dirt, stubborn stains and bad odours.

Our carefully formulated aftercare prevents deterioration of leather caused by traffic and dirt build up, which erodes the protective top coat.

**Upholstery** – we will clean and restore your upholstery back close to its original condition, with a given option to have your cleaned furniture sealed and protected after cleaning to help repel spillages and pet mess.

**Hard floor cleaning** – give your floor that perfect new finish with our high quality stone floor cleaning, polishing, sealing and restoration service.

**CALL 07852 565644 FOR YOUR FREE QUOTATION**

Email: [restore@restoreofficial.com](mailto:restore@restoreofficial.com)

# Horsell Matters (HM)

## The distribution team behind your Parish magazine

**H**ave you ever wondered how HM arrives at your door? 3100 copies are delivered free of charge to every home in Horsell parish. As far out as Chobham Road, Littlewick Road and Well Path, the parish boundary of St Mary's stretches a long way from the village centre. 30 copies are available in church for visitors.

The distribution is undertaken by a dedicated team of 62 volunteers, coordinated by Peter and Karen Saunbury for the past 10 years. Many others having undertaken the task since HM first started, over 2 decades ago, as a simple inhouse printed, folded paper edition. The largest round is a massive 130 houses with smaller ones being less than 10. Every two months, Knaphill Print deliver the boxes of magazines to St Mary's Church, where they are sorted into the 62 rounds. The copies are then placed at the back of church for collection by the volunteer distributors.

Volunteers report that many a finger has been trapped by the draft brushes in letterboxes or the powerful springs which slam them shut! But friendly



*Peter and Karen Saunbury – who sort 3,100 magazines before they are delivered through your door*

chat with recipients makes up for such hazards.

We are so grateful to our existing volunteers and are keen to recruit more distributors for current and new rounds e.g. the newly built homes in Moors Nook. Delivery is only every two months and it's a good chance to chat with neighbours. Please contact the Church office if you can help. Like so much in the village and church, volunteers help to keep our community going: the more you put in, the more you get out.



You cannot get through a single day without having an impact on the world around you. What you do makes a difference, and you have to decide what kind of difference you want to make.  
(Jane Goodall)



# Motormech



Vehicle Service & Repairs to all leading makes

**COMPLETE SERVICE**  
**£159.00**  
INC. VAT

**STANDARD SERVICE\***  
**£79.00**  
INC. VAT

**MOT TEST**  
**£39.00**  
INC. VAT

**FREE WINTER SAFETY CHECK**

**COMPLETE SERVICE & MOT**  
**£179.00**  
INC. VAT

**STANDARD SERVICE & MOT\***  
**£99.00**  
INC. VAT

**BOOK ONLINE**  
[www.motormechguildford.co.uk](http://www.motormechguildford.co.uk)  
**OR CALL: 01483 502671**

Unit 1H, Cathedral Hill Industrial Estate, Guildford, Surrey GU2 7YB



## A chance to work part time in your local community



Full, paid training is given to anyone with no prior experience.



- Supporting clients in their own homes
- £11.05 - £13.45 + holiday pay & petrol
- You will need to be over 18 with your own car

Call 01483 797950 or visit: [www.astoragency.co.uk](http://www.astoragency.co.uk)



## BOOKKEEPING AND PAYROLL EXPERTS

- **Bookkeeping** – day to day entry, VAT returns, management accounts, reconciliations
- **Payroll** – weekly and monthly processing, starters, leavers, RTI, P60s
- **Auto Enrolment**

We want to take away the headache of bookkeeping and payroll so you can concentrate on the more important aspects of running your business.

Please contact us for a free consultation to discuss how we can help support your business.

**Tel: 01483 755311**

Email: [mail@pabsco.co.uk](mailto:mail@pabsco.co.uk)

Web: [www.pabsco.co.uk](http://www.pabsco.co.uk)

Sundial House, High Street, Horsell,  
Woking, Surrey, GU21 4SU

SURREY • BERKSHIRE • HAMPSHIRE • LONDON

**pabsco**  
PAYROLL & BOOKKEEPING SUPPORT

## Sophie Sews

CURTAINS | BLINDS | INTERIORS

We are a small local company that creates bespoke curtains and blinds made-to-measure in Woking and Surrey. We also make a range of co-ordinating soft furnishings to complement your made-to-order curtains and blinds, including cushions and upholstery.

We offer a bespoke and individual service where we measure, advise, make and fit all our work. We aim to spend time with you to build a picture of your aspirations for your home, thereby reducing the rather daunting task of choosing styles and fabrics.

*In short, we listen, we design,  
we create and we fit.  
That's Sophie Sews.*

76 High Street, Horsell GU21 4SZ  
01483 598056  
[sophie@sophiesews.com](mailto:sophie@sophiesews.com)  
[www.sophiesews.com](http://www.sophiesews.com)



## CONVEYANCING AND PROBATE PRACTITIONERS

We offer the below services to our clients, conducted in a friendly, professional, supportive manner. We are excellent communicators using both technology and traditional standards of service to suit our clients.

- PROPERTY LAW SPECIALISTS
- SELLING AND/OR BUYING A PROPERTY
- REMORTGAGES • TRANSFERS • PROBATE
- WILLS • DECLARATION OF TRUSTS
- LASTING POWERS OF ATTORNEY
- COMMISSIONERS FOR OATHS

Please telephone or email for a free estimate or for further information.

Business Hours: 9am to 5.30pm Monday to Friday  
Free Parking

T: 01483 485700 F: 01483 485701  
E: [info@lyonsandcompany.co.uk](mailto:info@lyonsandcompany.co.uk)

6 Anchor Crescent, Knaphill, Woking,  
Surrey GU21 2PD

# Woking Funeral Service



**Proudly serving your local community  
since 1880**

Woking Funeral Service are here to support and guide you.  
We offer a friendly, professional service to families.

**Horsell**

**01483 355 752**

78 High Street  
GU21 4SZ

**Call or visit our team in branch. Rachel Chambers and Debby Loughman are on hand to offer their experience and local knowledge to support you with all your bereavement needs.**

- 24-hour service
- Bereavement advice
- Transparent pricing
- Private chapel of rest
- Floral tributes
- Memorial masonry
- Home visits
- Prepaid funeral plans
- International repatriation

**We are here to help 24 hours a day.**



[www.wokingfunerals.co.uk](http://www.wokingfunerals.co.uk)





# INSPIRE BEDROOMS

**Our brand new showroom is NOW OPEN in Horsell Village!**

We offer a design and supply service for wonderful fitted furniture options for living spaces in your home. The stunning range is available in a wide choice of contemporary and classic styles, so there is one to suit everyone.

Please call or email the team to arrange an appointment to discuss and view our range.



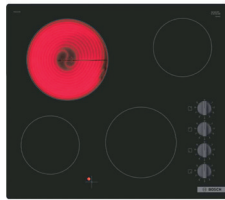
info@inspirekitchensuppliers.co.uk  
01483 472814  
@inspirekitchensuppliers

# WINTER SALE NOW ON!

Price Match Guarantee | Super Service | Expert Knowledge | Contact-Free Delivery

 **BOSCH**  
Invented for life

## Ceramic Electric Hob



PKE611CA3E

- Four Zones
- Dial controls, power boost
- Quick start, residual heat indicator
- Dimensions: H4.6 x W59.2 x D52.2cm

Now Only  
**£299.00** | 2 Year Warranty

 **BOSCH**  
Invented for life

## Built-in Single Oven



HHF113BR0B

- 66 litres (net) multifunction fan oven
- 3D hot air cooking
- Integral grill, programmable timer
- Dimensions: H59.9 x W59.4 x D54.8cm

Only  
**£349.00** | 2 Year Warranty  
A Energy Rating

**RSM**  
**Domestic Appliances**  
FRIENDLY SERVICE • BIG SAVINGS • FAST DELIVERY

**YOUR LOCAL DOMESTIC APPLIANCE SUPERSTORE**  
**1-2 Albion Parade, High Street, Knaphill, GU21 2PS**  
Also in Guildford, Ashted, Bookham and Epsom Downs  
**01483 475000 • [www.rsmdomesticappliances.com](http://www.rsmdomesticappliances.com)**

Terms & Conditions apply. Some products sold as an agent for Euronics Limited. All rights reserved. All offers are subject to availability while stocks last. Delivery & Installation charges may apply. Exclusions & Radius Apply. Prices correct at the time of print but can be subject to change. See in store for full details. Images for illustration purposes only. Copyright Euronics 2020. Savings compared to a higher price charged for seven days. Savings on selected models only.



# Your Property Partner Since 1992

Over the past **30 years** we have helped thousands of people sell, buy and rent.

From first time buyers buying their first home, to up-sizers with expanding families and then downsizers when they've flown the nest - we've been there for all of them.

We are Independent Estate Agency at it's best, and we are Your Property Partner For Life.

**For an up to date property valuation, get in touch.**

**Horsell**  
87 High Street, Horsell, GU21 4SY  
Tel: 01483 755222

[seymours-estates.co.uk](http://seymours-estates.co.uk)



## Seymours

Celebrating 30 Years