

Horsell Matters



The Village Magazine from your Parish Church
October – November 2024

Horsell Directory

St Mary's Church	www.stmarys-horsell.org.uk	
	Baptisms, Weddings or Funerals	772134
Parish Office open	Helen Gravette Tues 9am-4pm, Wed & Fri 9am-1.00pm	772134
	stmaryshorsell@btinternet.com	
Vicar	Revd Dmitry Lutsenko vicar@stmarys-horsell.org.uk	755618
Children & Families' Worker	Rebecca Connolly childrenandfamiliesstmarys@gmail.com	772134
Church Wardens	Brian Sheriff Mark McMurtrie	474975 07815 635609
Treasurer	David Leach	07708 866196
Pastoral Assistants	Margaret Johnson Hilary Mitchell Coral Colclough	762481 715459 747481
JAM (Jesus and Me)	Rebecca Connolly (3+) 10am most Sundays	772134
Tiny Treasures	Rebecca Connolly, St Andrew's Room Tues 9.30am to 11.30am, term time	772134
Bell-ringers and Servers	Alan Nichols [occasional] Tues. evening practice	767852
Trinity Methodist Church	office@trinitywoking.org.uk	730754
Horsell Evangelical Church	Revd Andrew Bents	822259
To Book the Village Hall	Paul Bowyer	764047
Parish Institute	www.horsell-parish-institute.org.uk	772134
Horsell Village School	Infants Head Teacher – Mrs J Reeve	714804
Horsell C of E School	Junior Head Teacher – Mrs C Wand	761531
Woking High School	Head Teacher – Mrs M Walter	888447
Halstead St Andrew's School	Acting Head Teacher Miss M Eaton	760943
Horsell Care	Helpline	07552 553414
Residents Association	Alan Taylor ajrolyat@gmail.com	
Scouts, Beavers, Cubs	Ali Stubbs gsl@horsellscouts.org.uk	07734 424568
Explorer Scouts (14-18 Yrs)	Roy Thompson explorers@woking.scouts.host	
Guides & Brownies	www.girlguiding.org.uk/information-for-parents	
WI Horsell Afternoon	Alison Evans-Wyatt amevans705@gmail.com	765570
	Meets on 1st Thursday at 1.45pm in the Village Hall	
WI Horsell Evening	Mrs Joan Cox	760783
	Meets on 4th Tuesday at 7.45pm in the Village Hall	
Woking Police Station	dial 101 from mobile or landline	

Homily

Rejoice!

Every autumn the people of Israel celebrated the seven day Festival of Booths or the Festival of Tabernacles. They were told: "You shall rejoice before the Lord your God for seven days." (Leviticus chapter 23 verse 40). Whether they felt like it or not, they were to rejoice, and keep on rejoicing! That's a challenge to us, too: what do we have to rejoice about?

I can rejoice at my good health. It enables me, among other things, to play golf – even if my golf is worse than I would like! For anyone who has a loving family, that's also a matter of rejoicing. But what if we don't have either good health or a loving family? What's there to rejoice about if we've recently suffered bereavement?

For the Christian there are two main reasons to rejoice.

First, the Lord is with us, and he knows every detail of our lives. He knows if we struggle with ill health,



Michael Templeman

or if we're grieving over a bereavement, and he helps us to cope. As Psalm 23 says, in verse 4: "Even though I walk through the valley of the shadow of death, I will fear no evil, for you are with me."

Secondly, Jesus promised that those who put their trust in him will enjoy life after death with him: "In my Father's house are many rooms... I am going there to prepare a place for you." (John chapter 14 verse 2).

Recently I attended a service for a childless widow who had died. Despite many difficulties she remained a faithful believer in Jesus. So we celebrated, we rejoiced in, her life and her faithfulness, and we rejoiced that she had gone to be with Jesus.

As St Paul says in Philippians chapter 4 verse 4: "Rejoice in the Lord always. I will say it again: Rejoice!"

Michael Templeman,
Lay Reader at St Mary's

SERVICES CARRIED OUT BY THE VICAR OF ST MARY'S CHURCH

Funerals, Burials and Cremations

We offer our sympathy to the families and friends of those who have died:

Bryan Oliver Gill Saville

Baptism and Thanksgiving

We welcome into the family of the church:

Leo Dennison

ST MARY'S CHURCH DIARY **OCTOBER 2024**

Tues 1st	9.30am-11.00am 2.00pm	Tiny Treasures Baby & Toddler Group Service at Kettlewell House
Wed 2nd	8.00pm	Engine Room House of Prayer
Fri 4th	8.45am-12noon	Pop In Coffee
Sun 6th	8.00am 10.00am	Holy Communion (CW) All Age Morning Worship
Tues 8th	9.30am-11.00am	Tiny Treasures Baby & Toddler Group
Fri 11th	08.45am-12noon	Pop In Coffee
Sun 13th	8.00am 10.00am 11.45am 6.30pm	Holy Communion (BCP) Parish Communion Harvest Festival Bring and share Parish lunch Contemplative Meditation
Tues 15th	9.30am-11.00am	Tiny Treasures Baby & Toddler Group
Wed 16th	2.00pm	Service at Horsell Lodge
Fri 18th	8.45am-12noon	Pop In Coffee
Sun 20th	8.00am 10.00am 4.00pm	Holy Communion (CW) Parish Communion Messy Church
Tues 22nd	9.30am-11.00am	Tiny Treasures Baby & Toddler Group
Fri 25th	8.45am-12noon	Pop In Coffee
Sun 27th	8.00am 10.00am 6.30pm	Holy Communion (BCP) Parish Communion Peaceful Prayer & Praise
Tues 29th	9.30am-11.00am	NO Tiny Treasures Baby & Toddler Group

ST MARY'S CHURCH DIARY **NOVEMBER 2024**

Fri 1st	10.00am-12noon	Pop In Coffee
Sun 3rd	8.00am 10.00am 6.30pm	Holy Communion Service (CW) All Age Morning Worship Annual Memorial Service
Tues 5th	9.30am-11.00am 2.00pm	NO Tiny Treasures Baby & Toddler Group Service at Kettlewell House
Wed 6th	8.00pm	Engine Room House of Prayer
Fri 8th	8.45am-12noon	Pop In Coffee
Sun 10th	8.00am 9.30am 10.50am 6.30pm	Holy Communion Service (BCP) Parish Communion Service at Horsell War Memorial Contemplative Meditation
Tues 12th	9.30am-11.00am	Tiny Treasures Baby & Toddler Group
Fri 15th	8.45am-12noon	Pop In Coffee
Sun 17th	8.00am 10.00am 4.00pm	Holy Communion (CW) Parish Communion Messy Church
Mon 18th	7.30pm	PCC Meeting
Tues 19th	9.30am-11.00am	Tiny Treasures Baby & Toddler Group
Fri 22nd	8.45am-12noon	Pop In Coffee
Sun 24th	8.00am 10.00am 12.15pm 6.30pm	Holy Communion (BCP) Parish Communion On Your Own Lunch Peaceful Prayer & Praise
Tues 26th	9.30am-11.00am	Tiny Treasures Baby & Toddler Group
Fri 29th	8.45am-12noon	Pop In Coffee
Sat 30th	7.30pm	Octavian Singers Concert

THE CHURCH BUILDING WILL BE OPEN

Tuesdays, Wednesdays, and Thursdays from **9.30am** to **3pm**



St Mary's Church, Horsell: @StMarysChurchHorsell

CW means Common Worship. **BCP** means Book of Common Prayer.
All correct at the time of going to print.

For further details please look at our website: www.stmarys-horsell.org.uk

ST MARY'S CHURCH DIARY **DECEMBER 2024**

Sun 1st	8.00am 10.00am	Holy Communion (CW) All Age Morning Worship
Tues 3rd	9.30am-11.00am 2.00pm	Tiny Treasures Baby & Toddler Group Service at Kettlewell House
Wed 4th	8.00pm	Engine Room House of Prayer
Fri 6th	8.45am-12noon 3.00pm-7.00pm	Pop In Coffee Christmas Tree Festival
Sat 7th	12noon-5.00pm	Christmas Tree Festival

Grave Matters

The graves of John, Henry and Eliza Back and an interesting bit of Horsell history.

The graves outside the east end of the chancel generally mark that the people buried there are of some importance. This is indeed true of the graves of Henry Back, vicar of Horsell from 1878 to 1884 and his brother Henry and his wife Eliza, also benefactors to Horsell and ultimately responsible for the development of the village to the east.

John Back came from St George's, Queen Square, Bloomsbury to become vicar of Horsell in 1878 after Henry Benson had left following a brief ministry to launch the new church at Farncombe. He was the son of John Back of Byfleet Lodge, JP, whose brother was Sir George Back, the Arctic explorer (1796-1878). John Back the elder was also father of Katharine Back, who married John Pares, father of Norman, and of Rev Henry Back, 1824-91. John was born in 1827 attended Eton and gained a BA (2nd class) at Trinity College Oxford in 1849. A bachelor, he was living at the vicarage (the present Old Vicarage) in 1881 with his niece and nephew and four servants. But the vicarage was proving too small and he had built Church Hill House (now Halstead St Andrew's School) and moved there shortly before retiring in 1884, staying there until his death in 1891 and thus forcing his successor, Henry Turle to return to the former vicarage. He

left £52,000 in his will, which helped pay for repairs at the church. His influence in the village and wealth were overshadowed by that of his brother, Henry, also an Etonian, this time with a 1st class degree from Trinity College Cambridge, and until 1881 vicar of Banbury. He died only three months after John, leaving £100,000, administered by his widow Eliza, who by the time she died in 1900 had the rights of presentation to the parish in her hands, had paid for the Institute, and built another new vicarage on the site of Pares Close – by which time John and Henry's nephew, Norman Pares, was living in the old vicarage. At her death the lands the Back family had acquired east of the church were acquired by the National Land Company and sold for development, not always without some difficulty, to form the basis of the dwelling up to Kettlewell Hill.



Back grave 2014 before fall



The present view of the cross flat on its face

John Back's grave seems to have dislodged that of John Goring, who died in 1806 and whose footstone has been re-sited next to the headstone by the east wall, but we have been unable to find anything about him though he was buried in a prestigious place, even though displaced by John Back's, whose headstone has unfortunately fallen. Henry and Eliza are buried just in front of John, although they never

lived in Horsell, but their wealth and financial transactions secured them a place in the parish's history.

For a detailed account of how eastern Horsell developed see the late John Craig's 'Eastern Horsell's development after the coming of the railway', published by Woking History Society in 2006.

Rosemary and Richard Christophers

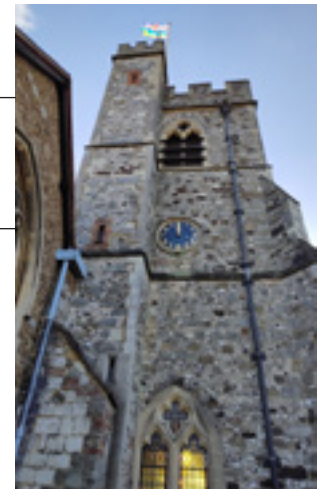
Tower Clock

We reported on the clock last December when we were hopeful of a full restart before Christmas, but that was not to be.

It started, but then stopped, and started again, then stopped again. So, it was dismantled and shipped to Gillett and Johnson's workshop, which originally manufactured it back in 1873. Funded by the kind support of the village, they worked on it and managed to get it working consistently and accurately for several months in their workshops. Early September witnessed the return of all the components to our Tower, with again the hope that all will be well before Christmas.



Barry Cole, who featured in the BBC programme on rebuilding Polesden Lacey's tower clock, worked on the reinstallation at St Marys.



Clock components awaiting return to the tower

Horsell Matters: Next Edition December /January 2025

Copy to be sent by 1st November by email please to: stmaryshorsell@btinternet.com

Advertising: please contact Sales at Knaphill Print, Tel: 01483 474900 or email: sales@knaphillprint.com

The Horsell Matters team extend their grateful thanks to **Knaphill Print Co Ltd** for producing this not-for-profit Parish magazine.

The views expressed by contributors to the magazine are not necessarily those of the PCC of St. Mary's Church. All advertisements are accepted in good faith.

Prayer Matters

Archbishop Justin Welby says: 'If we want to see things changed, it starts with prayer.'

How often are we moved to pray? In times of stress, strain, or when feeling vulnerable from problems arising at work, or from health issues, a bereavement or some other kind of need, many of us feel the need to pray. Sometimes it may be that God's Spirit is working as a still small voice within us.

We know from the Bible that Jesus taught his disciples and other followers about prayer: "When you pray, do not be like the hypocrites, for they love to pray standing in the synagogues and on the street corners to be seen by men ... but when you pray, go into your room, close the door and pray to your father who is unseen." (Matthew 6: 5-8)

At the time when Jesus said this, the religious leaders of the day were keen to be seen to be praying. Perhaps this was to encourage others to follow their example or so that they could be seen as worthy people. Jesus would have none of that though. He often went into the hills to be alone with God, to pray far away from the distractions of everyday life. There, he could bring to God his many concerns and receive the guidance and inspiration of God's Spirit speaking to him.

But what about us when we are moved to pray? How do we go about it? It can be helpful to find a time in the day and a place that works for you where you can be free for a few minutes from the distractions of phones, social media and interactions with other people. That may

be early or late in the day, in a particular room, while walking on the common, or in some other quiet place.

There will be things we hope God can help us with and that we want God to change. But it is important to remember that prayer is not a one-way street. When we speak with God we also need to listen to what God's Spirit may have to say to us. I do not believe that any prayer goes unanswered; but we do have to be prepared for God's answer to sometimes be 'not yet' or even 'no'.

Back to Archbishop Welby 'If we want to see things changed, it starts with prayer.' Might it just be that on occasion, what God wants to change is something within us?

Roy Wernham, Licenced Lay Minister.



PROSTATE CANCER

One Man dies every 45 minutes, (10,000 each year)

- One in eight men will get Prostate Cancer during their lives, the biggest cancer killer in men
- 85% of sufferers have no symptoms
- 35,000 men diagnosed each year
- 95% of men who have early detection are cured or gain control

What can be done?

- Don't wait for symptoms
- Simple PSA Blood Test by our trained and qualified volunteer phlebotomists
- Early detection saves lives
- Results usually within one week

Book a test

Online at cts.mypsatests.org.uk or use the QR code below

Cancer Testing South - cancertestingsouth.org



Not everyone wants to Trick or Treat



Long-term residents of Horsell will have noticed the increase in the contemporary celebration of Halloween. Those households that want to get involved are obvious by lit pumpkins and decorations that adorn front doors.

For some, practices of trick or treat are seen as out of hand, with people being menaced in their homes with fears for the elderly or vulnerable. Obvious clues are no pumpkin outside, no lights on, and refusing to answer the door; such households want nothing to do with the celebration and commercialisation. Yet others see it as a fun time to dress up, have a party, play traditional games, and maybe watch a horror movie.

There are so many different takes on Halloween; it has a complex background going back thousands of years. It has increasingly become commercialised, featuring monsters and horror characters. The one thing we can be certain of is the name, Halloween is a contraction of All Hallows Eve, and this refers to an old Christian festival known as All Hallows, that is, All Saints Day. So, what should we make of Halloween and how might Christians respond?

Contemporary Christian responses to Halloween are varied. Some Christians will carve a cross out of a pumpkin and hand out sweets to children. Many

Churches will throw a Light Party around Halloween to celebrate light and life rather than darkness and death. St Mary's Church has a remembrance service on Sunday 3rd November at 6.30 pm for those in the parish whose loved ones have died in recent years. Names are read out and candles are lit in their memory. Indeed, older practices may still occur in which candles are placed on the graves of loved ones.

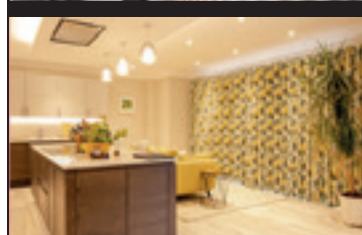
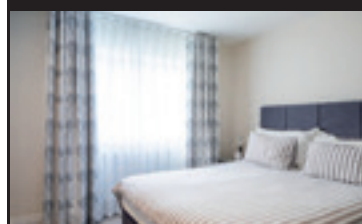
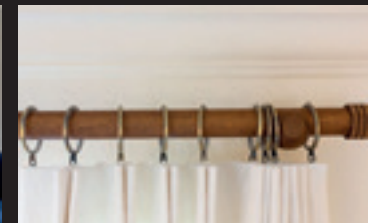
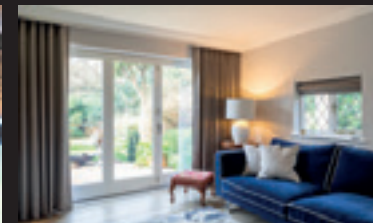
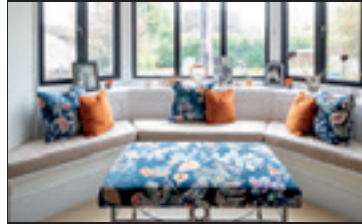
This year, as a Christian alternative to Halloween trick and treating, our Children and Families Worker, Rebecca Connolly, will be arranging a 'light party' on October 31st to celebrate Jesus, the light of the world. She will invite children to celebrate by dressing up as a superhero or wearing something bright and colourful, neon or sparkly.

Watch out for more details, and please come to the St Mary's light party. You will need to sign up to attend. It should be a fun event for children.

John 8:12 When Jesus spoke again to the people, he said, "I am the light of the world. Whoever follows me will never walk in darkness, but will have the light of life".

Sophie Sews

CURTAINS | BLINDS | INTERIORS



Renovating or refreshing your home?

Experience the best in bespoke, made-to-measure soft furnishings. Call now for an in-home design consultation or visit our shop in Horsell.

Let Sophie Sews turn your interior vision into a stunning reality.

CONTACT

76 High Street, Horsell, Surrey, GU21 4SZ

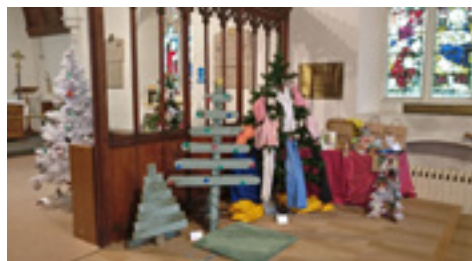
01483 598056

www.sophiesews.com

St Mary's Christmas Tree Festival

Schools, families, individuals, community groups and local businesses are invited to get creative and make an exhibition of Christmas trees.

Whether big, small, traditional, modern, edible, recycled, colourful, or illuminated, All trees are welcome, whatever their story. There will be Christmas music, crafts, refreshments, and mulled wine. Visitors will be asked to vote for their favourite trees and there will be prizes for the most popular trees.



Imaginative Tree entries from 2022

How much is it to enter?

It is free to enter a tree. There is no entry fee to the festival, but donations are welcomed. The money raised will be put towards the church mission and outward giving.

How do I get involved?

Think of a fun name for your tree, for use in the programme, and plan your tree design. Entry forms are available from the Parish Office, the Village and Junior schools. Please return completed entry forms to: Horsell Village Christmas Tree Festival, c/o Parish Office, The Vicarage, Wilson Way, Horsell, GU21 4QJ by Friday 22nd November 2024.

When do I take my tree to the church?

Trees should be delivered to St Mary's Church, Church Hill, Horsell on Thursday 5th December between 12 noon-3 pm or between 5 pm-8 pm. Trees should be free-standing and can be constructed on-site. Where possible please use LED battery-operated lights.

When can we visit the Festival?

Friday 6th December from 3 pm – 7 pm;
Saturday 7th December from midday to 5 pm.

What happens to my tree after the Festival?

Please collect your tree from the church on Sunday 8th December between 12 noon and 4 pm. If you do not collect your tree, it will be disposed of.

The festival cannot be held responsible for damage to your tree while it is part of the exhibition.

For further information contact Mike Couper mscouper@btinternet.com



Christmas Tree entry from 2022

euronics Dishwashers

from your independent electrical retailer



Price Match Guarantee | Super Service | Expert Knowledge | Contact-Free Delivery

beko

13 Place Settings Dishwasher

DVN05C20W

- Quick programmes
- Folding plate supports
- Child safety lock, sliding cutlery basket
- H85 x W59.8 x D60cm

Only **£299.99**

1 Year Guarantee
E Energy Rating



i INDESIT

12 Places Integrated Dishwasher

D2FHK26UK

- Low water usage – 9.5 litres
- Fast and clean program
- Save energy with ECO cycle
- H85 x W59.8 x D60cm

Only **£299.00**

1 Year Labour; 10 Year Parts
E Energy Rating



Hotpoint

Built-in Dishwasher

H2IHKD526UK

- Nine programmes
- Half load function: saves time and energy
- Rapid Wash 30
- H82 x W59.5 x D57cm

Only **£319.99**

1 Year Labour; 10 Year Parts
E Energy Rating



BOSCH

12 Place Settings Dishwasher

SMS21TW08G

- Five programmes, digital display
- Eco wash feature
- Delay start
- Dimensions: H84.5 x W60 x D60cm

Only **£399.00**

5 Year Warranty
E Energy Rating



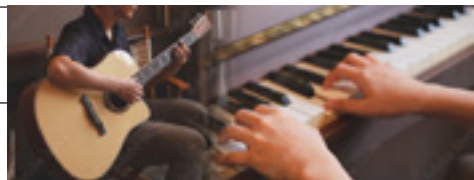
RSM
Domestic Appliances
FRIENDLY SERVICE - BIG SAVINGS - FAST DELIVERY

YOUR LOCAL DOMESTIC APPLIANCE SUPERSTORE
1-2 Albion Parade, High Street, Knaphill, GU21 2PS
Also in Guildford, Ashted, Bookham and Epsom Downs
01483 475000 • www.rsmdomesticappliances.com

Terms and conditions apply. Sold as an agent of Euronics Limited. All rights reserved. All offers are subject to availability while stocks last. Delivery and installation charges may apply. Exclusions and radius apply. See in store for full details. Images for illustration purposes only. Copyright Euronics 2024.

Come and Make Music with Us!

If you sing or play a musical instrument, read on.



Do you love singing? We are looking to increase the size of our choir at St. Mary's, to lead the music at the 10am service. Both men's and women's voices would be welcome to join our small and friendly group of singers. You need to be able to sing in tune, but not necessarily to read music. We sing a mixture of traditional hymns and more modern Christian songs, and we rehearse at the church once a month. The annual Carol Service each Christmas is a favourite event for the whole village. If you enjoy singing and would like to serve your Parish Church in this way, do please get in touch to find out more.

Do you play an instrument? Would you like to join our small band at St. Mary's who play and sing at our relaxed First Sunday morning of the month services, offering modern Christian worship

songs? If you can sing, or play, or are learning an instrument, and would like to be part of a modern worship band, we invite you to contact the Parish Office who will put you in touch with the group leader for further details.

Do you play the organ? Are you an organ scholar? We have a splendid pipe organ at St. Mary's church which we should like to see used more often. If you would like the opportunity to play it, to practise and perhaps to accompany the singing occasionally for our services, please give your details to the Parish Office.

To find out further details about any of these opportunities, please contact our Parish Office on 01483 772134 or email stmaryshorsell@btinternet.com



Churchyard Cat

With the colder weather of autumn, we cats tend to spend more time indoors, in the warm, but that can have potential challenges. Many house plants and cut flowers are rather toxic for us, such as Cyclamen, Lily, Tulip, Daffodils, Hyacinth and Amaryllis, however there are a few which we rather like, such as Spider plants, which are related to Catnip and Ferns which are fun to play with as well as Maranta and Calathea.

Then later in the month and in early November we are disturbed by fireworks. A safe indoor space lined with a blanket and a radio playing music would be purrfect. If we are kept indoors, our humans need to remember that we are more active at dawn and dusk, when small rodents are about; that is when I choose to patrol my churchyard, looking for tasty snacks.

Knäphill VETS

New, Friendly, Independent Vet Practice



Every family, every pet, we care for them as if they were our own

Thoughtfully designed facilities to ensure a calm and positive experience, onsite parking, separate cat and dog waiting, and hospitalisation, dental and surgical theatres, digital x-ray, and a CT scanner.

Come and see the difference

Knaphill Vets, Anchor Hill, Knaphill, GU21 2HW
www.knaphillvets.co.uk contact@knaphillvets.co.uk Tel. 01483 95 1234



- Lawn Care
- Tree Care
- Hedge Cutting
- Fencing
- Weeding
- Feeding
- Beds
- Borders
- Planting
- Regular Maintenance
- Logs for sale

Does your garden need the personal touch?
Local gardener now working in your area
available to assist with all your garden needs.

For all enquiries please contact Julie on:
01483 836490 / 07850 423585

Fully Insured, References available.

THE IRON LADY



39, High Street, Woking,
GU21 4UD

T: 07900 567000

E: kassie44@hotmail.com

TINY TREASURES

Baby and Toddler Group
Every Tuesday (term time)
9.30am to 11.00am

No group on
29th Oct and 5th Nov '24

In the St Andrew's Room
St Mary's Church, Horsell

Come and make friends,
enjoy play, craft,
and songs

A
B
C

Saint Mary the Virgin

JESUS AND ME

Jesus and Me

A time for children aged 3+ to learn
and worship together during our
10am Sunday Services

Every Sunday except the first Sunday
of the month when we have All Age
Worship

There will be no 'JaM' over the
summer but there will be activities
for children during the 10am service

Term starts: 8th September, 2024

Saint Mary the Virgin

ALL AGE WORSHIP

Lively songs,
thought-provoking
Bible stories,
fun and family fellowship at 10am

First Sunday
of every month

6th October
3rd November
1st December

Saint Mary the Virgin

LIGHT PARTY

31ST OCTOBER 4.30-5.45PM

ST MARY'S CHURCH, HORSELL

FOR CHILDREN IN SCHOOL YEARS 2-6

SIGN UP USING THE QR CODE

Saint Mary the Virgin

4.00pm to 5.30pm

20th October
17th November
15th December

Explore a Bible theme through
craft, food, games or nature.
There will be a short celebration
with a story, songs and prayers.

For all ages!
Picnic tea provided!

Messy Church is part of The Bible Reading Fellowship (BRF), a
Registered Charity.
brf.org.uk

Saint Mary the Virgin

FRIDAY POP-IN COFFEE

8.45am until noon
(term time)

10am to 12 noon
(school holidays)

Why not drop in for a
cuppa, a piece of cake and
a chat once you have done
the school drop-off?

Saint Mary the Virgin

HARVEST FESTIVAL FAMILY COMMUNION SERVICE

10am Sunday 13th October
All welcome

Donations of non-perishable items
will be collected during the service
and distributed within the community
and at the York Road Project

Saint Mary the Virgin

STAY IN TOUCH

St Mary's Parish Office is open
Tuesday 9am to 4pm
Wednesday & Friday 9am to 1pm
Telephone: 01483 772134

Visit our website at
stmays-horsell.org.uk

Follow us on Facebook
StMarysChurchHorsell

Email us:
stmayshorsell@btinternet.com
childrenandfamiliesstmays@gmail.com

Our services are streamed via You Tube
@stmayshorsell

Saint Mary the Virgin

COLOUR AND MATCH MUSICAL INSTRUMENTS

1. Colour in the pictures of musical instruments.
2. Match the pictures to their names. First one has been done for you.
3. Which instrument is not named? Add it's name here _____
4. How many microphones can you count on this page? (answers on page 20)

✓ flute

acoustic guitar

tambourine

triangle

trumpet

clarinet

drum

violin

base guitar



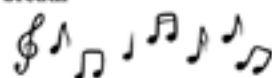
Did you know? Musical instruments get a lot of mention in the Bible, especially in the book of Psalms.

There are 150 Psalms, and in the last one we read:

Praise God with the sounding of the trumpet,
praise Him with the harp and lyre,
praise Him with tambourine and dancing,
praise Him with the strings and flute,
praise Him with the clash of cymbals,
praise Him with resounding cymbals.

Let everything that has breath
praise the Lord.

(Psalm 150, verses 2-6)



The First Sunday 10am service at St Mary's often features our worship band and singers, where many of these instruments are played. Come along, you will be most welcome!

What's On?

Popular Lectures about Art

At Welcome church, 1-5 West Street, Woking, GU21 6DJ.

On Thursday **10 October 2024 at 10.30 am** the lecture is on 'Veronese and the depiction of luxury goods in 16th C Venice' delivered by Chantal Brotherton-Radcliffe and on **Thursday 14 November 2024 at 10.30 am** a reflective lecture entitled 'Lest we forget – the moving story of Britain's war memorials' will be given by Andrew Davies.

The lectures are free for members of TASM, and £10 for guests, who are asked to contact the membership secretary, Richard Brace, by email in advance at richard.brace@icloud.com

<https://www.theartssocietymayford.org.uk/Lectures/FutureLectures.aspx>



Pop-Up Art Exhibition and Sale

On two consecutive Saturdays in November, in Christchurch, Woking Town Centre, a wide variety of art by members of the Woking Art Society will be displayed. This includes several Horsell artists. The dates are the **16th and 23rd November** and entry is free.



Horsell Sings!

Horsell's Community Choir will have their annual Christmas Concert in St Mary's Church on **Saturday 14th December**. The choir is conducted by Anna Tabbush, an inspirational choir leader who arranges the music in three or four-part harmony and draws on contemporary and traditional songs from the British Isles and worldwide. Come and enjoy some festive cheer from Horsell Sings! Tickets can be purchased from geoff.hughes@horsellsings.org.uk

RESTORE OFFICIAL
A CLEANER ALTERNATIVE

**SUPERIOR
CARPET &
UPHOLSTERY
CLEANING**

**FREE CALL OUT
QUOTATIONS**

Call: Harry James: 07852 565644
Email: restore@restoreofficial.com

Garden Matters

How Can I Garden More Sustainably?

There are things we can make rather than buy, thus saving on non-renewable resources.

Dropped leaves can be collected for making precious leaf mould, thereby re-using garden 'waste' to nourish the soil.

Hardwood cuttings taken now will produce more plants for free. Rather than wasting compost, these can be placed directly into the soil. The ideal candidates are buddleias, currants, roses, and many deciduous trees, shrubs and climbers. 15 to 30 cm lengths are taken from healthy woody stems from this year's growth, each cut just below a pair of buds at the base and just above a bud at the top. The top cut slopes to allow water run-off and it also reminds me which end is uppermost when planting! These will need a sheltered site with well-drained soil. Each cutting will be planted with the bottom two-thirds in soil and about 15-30 cms (depending on the size of the plant) from its neighbour. Strong root systems will form over winter when no leaves are needed to photosynthesise and support growth above ground. The resulting plants can be moved by next autumn.



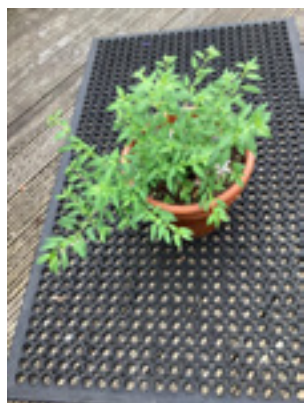
Buddleia Cutting Taken in 2023

When garden tools reach the end of their life, I will look for second-hand ones that have stood the test of time. My small hand fork, purchased at a plant fair vintage stall for a reasonable amount, is comfortable to use and beautifully made. Carefully looked after, it will last for years.

My actions won't make a huge impact. However, little droplets form big oceans, and together we can make a difference.

The photos show two of my hardwood cuttings taken last year – have a go as they are so easy to do.

Elna Broe



Hawkshead Fuschia Cutting Taken in 2023

Answers to page 18: The instrument that is not named is a piano. There are 12 microphones.

KRB Ltd
Home Improvements

PVC • Aluminium • Timber
Windows • Doors • Roof Lanterns • Bi-Folds
Orangeries • Garden Rooms • Conservatories

01483 727 474 | sales@krbltd.com
109 High Street | Horsell | Surrey | GU21 4SY
76 High Street | Old Woking | Surrey | GU22 9LN

PILATES YOGA

Mondays 10:30 & 18:30 Pilates

11.30 & 19.30 Yoga

Tuesdays 11:30 Pilates

Wednesdays 11:30 Yoga – Beginner

Thursdays 10:30 Pilates

11:00 Yoga

Horsell Village Hall, High Street, GU21 4SS

Email: yogabyshen@gmail.com

Weekly classes throughout the year. Fun and friendly environment for all abilities as alternatives are given. Classes based on sound physiotherapy practices.

Strengthen and lengthen your muscles.

There is nothing like a live class where strangers have fun and become friends.

Discounts on block booking



Christmas is Coming.....to a High Street Near You

A date for your diary is the Horsell Christmas Market on Saturday 7th December 2024, between 1 pm and 5 pm.

Come and buy unique and special Christmas gifts from local crafters and traders. The High Street will be closed allowing you and your family to safely wander around the stalls and enjoy the atmosphere, entertainment, local craft stalls, and shops. There will be everything from food, presents, clothes, and jewellery for sale with bands and dancers to entertain you. Plus, you will be able to visit St Mary's Christmas Tree Festival.

The Christmas Market Team (HRA) is finalising the plans for the 2024 Christmas Market. Over 40 stalls are already booked and the local shops and cafes will be open as usual. Regular visitors to the Market will know that local brews, mouth-watering Chinese and Indian snacks plus Prince's burgers are all available.

Stalls are limited and spaces are going quickly so if you want a stall please apply now.

If you can help with planning the Christmas Market, or erecting gazebos, and after the event dismantling and tidying it all away, please let us know. Lots of hands are needed to make this a successful and special event for the village.

Contact: xmas@horsellresidents.com



Horsell Sings! (Christmas Market 2023)

Bring and share Parish lunch on Sunday 13th October after the Harvest Festival 10 am service. Please join us.

INSPIRE KITCHENS LTD
Creating the heart of the home

Thanks to our wonderful customers we are celebrating 5 years in business... and to celebrate we are offering **EXCLUSIVE OFFERS** on all products until December 1st

Contact us for more information quoting 'HM24'

48 HIGH STREET,
KNAPHILL, WOKING,
SURREY, GU24 2PY
01483 472814
www.inspirekitchensuppliers.co.uk

Book Review

Conclave by Robert Harris

The synopsis: The Pope is dead. Behind the locked doors of the Sistine Chapel, one hundred and eighteen cardinals from all over the globe will cast their votes in the world's most secretive election. They are holy men. But they have ambition. And they have rivals. Over the next seventy-two hours, one of them will become, for Roman Catholics, the most powerful spiritual figure on earth.

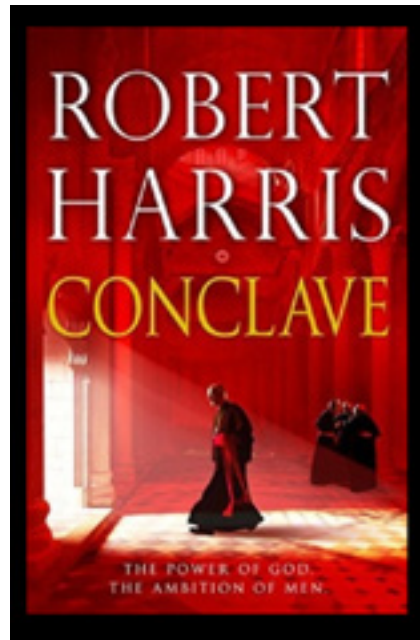
Genre: historical fiction portraying the differences in the many cardinals and their views of the Roman Catholic Church's future.

Overly religious? no. As in politics today, there are factions within the church and people with dark secrets. It details the process of electing a new pope, its rituals and places; its depth, appeal, and momentum are in the characterisations - that material rather than spiritual forces may drive the candidates.

Pace: Harris is a master storyteller. In Conclave, his characters have dimension and are fallible, they exhibit the struggle between man and God, the views of the outside world, and the highly political event of electing the Supreme Pontiff. The procedural aspects are fluid and well-integrated into this relatively short novel.

Ending: is it plausible? Possibly. Regardless of the possibility, it was unexpected.

Film: A film based on the book, starring Ralph Fiennes, directed by Edward Berger and written by Peter Straughan is set for release in the US on 1 November 2024. It is anticipated to arrive in UK cinemas on 29 November.



TFM FENCING

All Aspects of Fencing Landscaping & Gardening

BEFORE **AFTER**

Services

- Fencing
- Gates
- Pergola's
- Landscaping
- Patios
- Decking
- Retain Walls
- Block Pavement
- Turfing & artificial grass

For Free Quotes & Estimates Call
Florin on 07503964675 |
tfmfencing@gmail.com

All Work Fully Guaranteed
and Insured

Based in Knaphill and Covering
all Surroundings Areas

Jacksons Fencing APPROVED INSTALLER | Checkatrade.com | Google Guaranteed

f | tiktok | nextdoor | instagram

www.tfmfencing.com

Providing
trusted nursing
care, tailored
to you

NEW NURSING
SUITE NOW OPEN



Discover the peace of mind that comes with trusted nursing care tailored to your individual needs. Our dedicated team of nurses are committed to providing personalised care in a warm and supportive environment, ensuring your wellbeing and comfort every step of the way. Experience the difference at Horsell Lodge Care Home.

Call freephone **0808 223 5352** | Find us online **caringhomes.org**

Kettlewell Hill, Woking, Surrey, GU21 4JA
This rating is correct at time of print

BOOK A
VISIT TODAY



Horsell Lodge
CARING HOMES



**TRIDENT HONDA PROUDLY PRESENTS
THE LATEST HONDA SUV RANGE**



Honda e:Ny1 - e:BEV



Honda HR-V e:HEV



Honda ZR-V e:HEV



Honda CR-V e:PHEV

COME IN AND VIEW THE LATEST HONDA RANGE OF VEHICLES

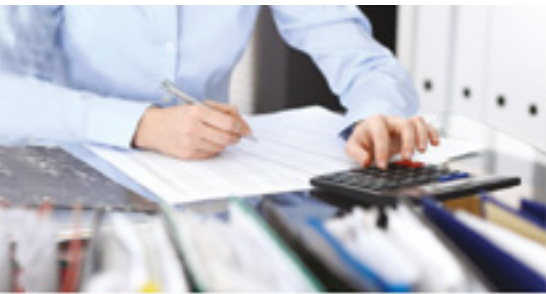
- Family business established in 1963, celebrating 60 years of quality service
- Full sales, service & parts facilities including bodyshop repairs
- All makes servicing, MOTs, Tyres, While-U-Wait servicing
- Honda Service Price Match Promise
- 24 hour Filling Station & Convenience store



Trident Honda
Guildford Road
Ottershaw
Surrey, KT16 0NZ

01932 874411
ottershaw@tridenthonda.co.uk
www.tridenthonda.co.uk





BOOKKEEPING AND PAYROLL EXPERTS

- **Bookkeeping** – day to day entry, VAT returns, management accounts, reconciliations
- **Payroll** – weekly and monthly processing, starters, leavers, RTI, P60s
- **Auto Enrolment**

We want to take away the headache of bookkeeping and payroll so you can concentrate on the more important aspects of running your business.

Please contact us for a free consultation to discuss how we can help support your business.

Tel: 01483 755311

Email: mail@pabsco.co.uk

Web: www.pabsco.co.uk

Sundial House, High Street, Horsell, Woking, Surrey, GU21 4SU

SURREY • BERKSHIRE • HAMPSHIRE • LONDON

pabsco
PAYROLL & BOOKKEEPING SUPPORT



Your Local Chartered Surveyors

RICS HomeBuyer Reports

Building Surveys

Valuations

All Types Of Buildings

Over 30 Years Experience

Call Or Visit Us Today For A Competitive Quote

Frazers Surveyors Ltd
Thornash House, 37 High St, Horsell, GU21 4UR
T: 01483 730909 E: surveying@frazers.co.uk
www.frazers.co.uk



CONVEYANCING AND PROBATE PRACTITIONERS

We offer the below services to our clients, conducted in a friendly, professional, supportive manner. We are excellent communicators using both technology and traditional standards of service to suit our clients.

- PROPERTY LAW SPECIALISTS
- SELLING AND/OR BUYING A PROPERTY
- REMORTGAGES • TRANSFERS • PROBATE
- WILLS • DECLARATION OF TRUSTS
- LASTING POWERS OF ATTORNEY
- COMMISSIONERS FOR OATHS

Please telephone or email for a free estimate or for further information.

Business Hours: 9am to 5.30pm Monday to Friday
Free Parking

T: 01483 485700 F: 01483 485701

E: info@lyonsandcompany.co.uk

6 Anchor Crescent, Knaphill, Woking, Surrey GU21 2PD

Woking Funeral Service



Proudly serving your local community since 1880

Woking Funeral Service are here to support and guide you. We offer a friendly, professional service to families.

Horsell

01483 355 752

78 High Street
GU21 4SZ

Call or visit our team in branch. Rachel Chambers and Debby Loughman are on hand to offer their experience and local knowledge to support you with all your bereavement needs.

- 24-hour service
- Bereavement advice
- Transparent pricing
- Private chapel of rest
- Floral tributes
- Memorial masonry
- Home visits
- Prepaid funeral plans
- International repatriation

We are here to help 24 hours a day.

www.wokingfunerals.co.uk





HALSTEAD ST ANDREW'S SCHOOL

A PARTNERSHIP TO FORM THE SCHOOL OF THE FUTURE FOR WOKING

An independent co-educational school for ages 2-16

You are warmly invited to join us at our next open morning. Please visit our website to book your place: www.hsaschool.co.uk/open-days

ELECTRICIAN/HOME MAINTENANCE



Sockets, lights to full re-wires. Painting, tiling, and plaster repairs etc.

No job too small. Reliable.

Tim Dear
01483 762967
or 07973 777332

PENNY & HAYTER OPTICIANS

- Independent Opticians
- Personalized service
- Warm & friendly approach
- Highest standards of eyecare
- Latest equipment
- A wide selection of frames, glasses lenses and contact lenses



To start your eye care journey, call Penny & Hayter Opticians on 01483 475205, or visit: www.pennyandhayter.co.uk

3 Albion Parade, High Street, Knaphill Woking, Surrey, GU21 2PS
info@pennyandhayter.co.uk

Violin Teaching

Grading exams / conservatoire entrance. DBS checked and ISM registered

Graduate:
Royal College of Music and University of Oxford

- Based in Woking
- Experience with all ages
- Face-to-face and Zoom
- Double vaccinated



CONTACT

Emmanuel Bach: 07903 582483
Emmanuel.F.Bach@gmail.com



Motormech



Vehicle Service & Repairs to all leading makes

FREE BRAKE AND BATTERY CHECK**

MOT TEST £39.00

COMPLETE SERVICE*
£179.00
INC. VAT

STANDARD SERVICE*
£99.00
INC. VAT

COMPLETE SERVICE & MOT*
£199.00
INC. VAT

STANDARD SERVICE & MOT*
£119.00
INC. VAT

Our Service Team will be happy to provide you a quotation and make a booking. You can also book online. All makes and models.

* Terms & Conditions apply. We will report to you if the spark plugs require changing.

* We'll collect and deliver your vehicle **Free of charge** within a 5 mile radius of GU2 7YB. The Complete and Standard service offer includes all makes and models up to engine size 2000cc. Additional surcharges will apply for larger engine sizes.

** Free Brake and Battery Check with Complete Service and Complete Service with MOT

BOOK ONLINE: www.motormechguildford.co.uk
OR CALL: 01483 502671

Unit 1H, Cathedral Hill Industrial Estate,
Guildford, Surrey GU2 7YB



WHY SHOULD YOU CHOOSE SEYMOURS?



Partner Owned & Run

Because we're Partner run, the owner of the business will be personally involved in your sale.



20 Seymours Offices

All the care and attention of a local independent with the vast selling power of our network.



Knowledgeable Local Staff

Our staff live nearby to offer unrivalled local knowledge and expertise when you move.



Unrivalled Marketing

Attract the best buyers with high quality marketing photos, videos, brochures and social media.



National & London Buyers

Get exclusive access to buyers from 800 Guild member agents across the UK and London.



Property Finder Services

Sell with Seymours and we'll prioritise your search to find your dream home.



Supporter of Local Charities

Enjoy peace of mind working with an agent that supports local schools and charities.



No.1 In Surrey

We're proud to help more people move in our local community than any of our competitors.

If you're thinking of selling, please call us for a **free market appraisal of your property.**



Lloyd Moss
Partner



James Taylor
Partner

Seymours Horsell

01483 755222 | sales@seymours-horsell.co.uk



Seymours

Printed by Knaphill Print Co. Ltd. Tel: 01483 474900