

# Horsell Matters

A photograph of a stone cross in a churchyard. The cross is made of grey stone and has a circular ring at the top. It stands on a multi-tiered base. In the background, there is a brick building with a dark roof and two chimneys. A flagpole with the Union Jack flag is visible to the right. The sky is blue with some clouds.

The Village Magazine from your Parish Church  
October – November 2022

# HORSELL DIRECTORY

<b>St Mary's Church</b>	Website: <a href="http://www.stmarys-horsell.org.uk">www.stmarys-horsell.org.uk</a>	
	Baptisms, Weddings or Funerals	772134
<b>Parish Office open:</b>	Tuesday 9am-4pm, Wednesday & Friday 9am-1.00pm	
	<a href="mailto:stmaryshorsell@btinternet.com">stmaryshorsell@btinternet.com</a> Helen Gravette	772134
<b>Vicar</b>	Rev'd Dmitry Lutsenko	755618
	<a href="mailto:vicar@stmarys-horsell.org.uk">vicar@stmarys-horsell.org.uk</a>	
<b>Church Wardens</b>	Brian Sheriff	474975
	Michael Couper	770920
<b>Treasurer</b>	David Leach	823439
<b>Cathedral Link</b>	Gill Saville	773799
<b>Pastoral Assistant</b>	Janet Johnson	591756
	Margaret Johnson	762481
	Hilary Mills	772952
	Coral Colclough	747481
<b>JAM (Jesus and Me)</b>	Rev'd Dmitry Lutsenko (4+) 10am most Sundays	772134
<b>Babies and Toddlers</b>	Angela Murphy	832943
	St Andrew's Room, Tues 9.30am to 11.30am, term time	
<b>Twinkle Tots</b>	Mike Couper, St. Andrew's Room	772134
	Thursdays 9.30 to 11.30, term time	
<b>Bellringers</b>	Avril Blagbrough [occasional] Tues. evening practice	767421
<b>Trinity Methodist Church</b>	<a href="mailto:office@trinitywoking.org.uk">office@trinitywoking.org.uk</a>	730754
<b>Horsell Evangelical Church</b>	Revd Andrew Bents	822259
<b>To Book: Village Hall</b>	Paul Bowyer	764047
<b>Parish Institute</b>	<a href="http://www.horsell-parish-institute.org.uk">www.horsell-parish-institute.org.uk</a>	772134
<b>Horsell Village School</b>	Infants Head Teacher - Mrs Reeve	714804
<b>Horsell C of E School</b>	Junior Head Teacher—Mrs C Wand	761531
<b>Woking High School</b>	Head Teacher - Mrs M Walter	888447
<b>Horsell Care</b>	Helpline	730740
<b>Residents Association</b>	Alan Taylor <a href="mailto:ajrolyat@gmail.com">ajrolyat@gmail.com</a>	
<b>Scouts, Beavers, Cubs</b>	Ali Stubbs 07734 424568 <a href="mailto:gsl@horsellscouts.org.uk">gsl@horsellscouts.org.uk</a>	
<b>Explorer Scouts (14-18 Yrs)</b>	Roy Thompson <a href="mailto:explorers@woking.scouts.host">explorers@woking.scouts.host</a>	
<b>Guides &amp; Brownies</b>	<a href="http://www.girlguiding.org.uk/information-for-parents/register-your-daughter/">www.girlguiding.org.uk/information-for-parents/register-your-daughter/</a>	
<b>WI Horsell Afternoon</b>	Alison Evans-Wyatt <a href="mailto:amevans705@gmail.com">amevans705@gmail.com</a>	765570
	Meets on 1 <sup>st</sup> Thursday at 1.45pm in the Village Hall	
<b>WI Horsell Evening</b>	Mrs Sheila Tickner	760783
	Meets on 4 <sup>th</sup> Tuesday at 8.00pm in the Village Hall	
<b>Woking Police Station</b>	dial 101 from mobile or landline	

# A Time to Remember and be Thankful

Writing this, I sit in the shade of my small bungalow after the hottest summer days for many decades, and I mourn the death of our dear late Queen Elizabeth II. Wasn't she a wonderful lady whose Christian faith beamed out of her familiar face? She had eyes that smiled.

And I think ahead to our upcoming Remembrance Service that will take place this year on Sunday 13th November. It is a national opportunity to remember the service and sacrifice of all those that have defended our freedoms and protected our way of life; we do this particularly well in Horsell as we gather around the village War Memorial at 10.50am on that Sunday. I particularly like that we sing more than the first verse of the National Anthem. This year, we will, of course, sing for our new King and the words including the additional verses will be printed out for all to follow if you wish to take part. Please come along if you can.

The hot summer meant some home-grown produce has done well (if the plants could be kept watered). Harvest is a grand celebration of the food

grown on the land. In Britain, we have given thanks for good harvests since pagan times. We celebrate by singing and praying, and we decorate our church with baskets of fruit and food, and colourful flowers, arranged by a group of volunteers, making the church look splendid.



Here is a short prayer for the whole year:

Lord thank you for walking with us through the seasons of our lives. For the winter, when we are held safe in your arms through the darkness. For the hope of spring, as we are filled with new promise and life. For summertime, full of warmth and colour. For autumn days as leaves fall, covering the ground in preparation for new growth.

You are always with us. Amen  
Mike Couper  
Church Warden

## ST MARY'S CHURCH REGISTERS

### Burials & Cremations

*We offer our sympathy to the families and friends of those who have died:*  
Matthew Gales, Michael Horsfield, Brian Hughes, Dorothy Lowther, Margaret Preece

### Baptism

*We welcome into the family of the church:* Jessica Cook, Hugo and Maxwell Wright

### Thanksgiving of a Child

*We offer congratulations to:* Annabel Young

## ST MARY'S CHURCH DIARY **OCTOBER 2022**

<b>Sun 2nd</b>	8.00am 10.00am	Holy Communion (CW) Family Harvest Festival Service NO BAPTISM
<b>Tues 4th</b>	9.30am-11.30am 11.00am-4pm 2.00pm 4.00pm	Baby & Toddler Group Private Prayer Service at Kettlewell House Prayer at 4pm – at home
<b>Wed 5th</b>	11.00am 11.00am-4pm 8.00pm	Holy Communion Service Private Prayer Engine Room House of Prayer
<b>Thurs 6th</b>	9.30am-11am 11.00am-4pm	Twinkle Tots Private Prayer
<b>Fri 7th</b>	9am-12noon	Pop In Coffee
<b>Sun 9th</b>	8.00am 10.00am 6.30pm	Holy Communion (BCP) Parish Communion Contemplative Meditation
<b>Tues 11th</b>	9.30am-11.30am 11.00am-4pm 4.00pm	Baby & Toddler Group Private Prayer Prayer at 4pm – at home
<b>Wed 12th</b>	11.00am-4pm	Private Prayer
<b>Thurs 13th</b>	9.30am-11am 11.00am-4pm	Twinkle Tots Private Prayer
<b>Fri 14th</b>	9am-12noon	Pop In Coffee
<b>Sun 16th</b>	8.00am 10.00am 4.00pm	Holy Communion (CW) Parish Communion Messy Church
<b>Tues 18th</b>	9.30am-11.30am 4.00pm 11.00am-4pm	Baby & Toddler Group Prayer at 4pm – at home Private Prayer
<b>Wed 19th</b>	11.00am-4pm	Private Prayer
<b>Thurs 20th</b>	9.30am-11am 11.00am-4pm	Twinkle Tots Private Prayer
<b>Fri 21st</b>	9am-12noon	Pop In Coffee
<b>Sun 23rd</b>	8.00am 10.00am	Holy Communion (BCP) Parish Communion
<b>Tues 25th</b>	9.30am-11.30am 11.00am-4pm 4.00pm	NO Baby & Toddler Group Private Prayer Prayer at 4pm – at home
<b>Wed 26th</b>	11am-4pm	Private Prayer
<b>Thurs 27th</b>	9.30am-11am 11.00am-4pm	NO Twinkle Tots Private Prayer
<b>Fri 28th</b>	10am-12noon	Pop In Coffee
<b>Sun 30th</b>	8.00am 10.00am 6.30pm	Holy Communion (BCP) Parish Communion Peaceful Prayer & Praise

## ST MARY'S CHURCH DIARY **DECEMBER 2022**

<b>Thurs 1st</b>	9.30am-11am 11am-4pm	Twinkle Tots Private Prayer
<b>Fri 2nd</b>	9.00am-12noon 2.30pm-6pm	Pop-in-Coffee Christmas Tree Festival
<b>Sat 3rd</b>	10am-5pm	Christmas Tree Festival
<b>Sun 4th</b>	8.00am 10.00am	Holy Communion (CW) All Age Morning Worship

## ST MARY'S CHURCH DIARY **NOVEMBER 2022**

<b>Tues 1st</b>	9.30am-11.30am 11.00am-4pm 2.00pm 4.00pm	Baby & Toddler Group Private Prayer Service at Kettlewell House Prayer at 4pm – at home
<b>Wed 2nd</b>	11.00am 11.00am-4pm 6.30pm 8.00pm	Holy Communion Service Private Prayer Annual Memorial Service Engine Room House of Prayer
<b>Thurs 3rd</b>	9.30am-11am 11.00am-4pm	Twinkle Tots Private Prayer
<b>Fri 4th</b>	9am-12noon	Pop In Coffee
<b>Sun 6th</b>	8.00am 10.00am	Holy Communion Service (CW) All Age Morning Worship
<b>Tues 8th</b>	9.30am-11.30am 11.00am-4pm 4.00pm	Baby & Toddler Group Private Prayer Prayer at 4pm – at home
<b>Wed 9th</b>	11.00am-4pm	Private Prayer
<b>Thurs 10th</b>	9.30am-11am 11.00am-4pm	Twinkle Tots Private Prayer
<b>Fri 11th</b>	9am-12noon	Pop in Coffee
<b>Sun 13th</b>	8.00am 9.30am 10.50am 6.30pm	Holy Communion Service (BCP) Remembrance Sunday Parish Communion Short Service at the War Memorial Contemplative Meditation
<b>Tues 15th</b>	9.30am-11.30am 11.00am-4pm 4.00pm	Baby & Toddler Group Private Prayer Prayer at 4pm – at home
<b>Wed 16th</b>	11.00am-4pm	Private Prayer
<b>Thurs 17th</b>	9.30am-11am 11.00am-4pm	Twinkle Tots Private Prayer
<b>Fri 18th</b>	9am-12noon	Pop In Coffee
<b>Sun 20th</b>	8.00am 10.00am 4.00pm	Holy Communion (CW) Parish Communion Messy Church
<b>Mon 21st</b>	8.00pm	PCC Meeting
<b>Tues 22nd</b>	9.30am-11.30am 11.00am-4pm 4.00pm	Baby & Toddler Group Private Prayer Prayer at 4pm – at home
<b>Wed 23rd</b>	11.00am-4pm	Private Prayer
<b>Thurs 24th</b>	9.30am-11am 11.00am-4pm	Twinkle Tots Private Prayer
<b>Fri 25th</b>	9am-12noon	Pop In Coffee
<b>Sun 27th</b>	8.00am 10.00am 6.30pm	Holy Communion (BCP) Parish Communion Peaceful Prayer & Praise
<b>Tues 29th</b>	9.30am-11.30am 11.00am-4pm 4.00pm	Baby & Toddler Group Private Prayer Prayer at 4pm – at home
<b>Wed 30th</b>	11.00am-4pm 6.00pm	Private Prayer St. Andrew's School Service



**St Mary's Church, Horsell**  
@StMarysChurchHorsell

*All correct at the time of going to print*  
For further details please look at our website:  
[www.stmarys-horsell.org.uk](http://www.stmarys-horsell.org.uk)

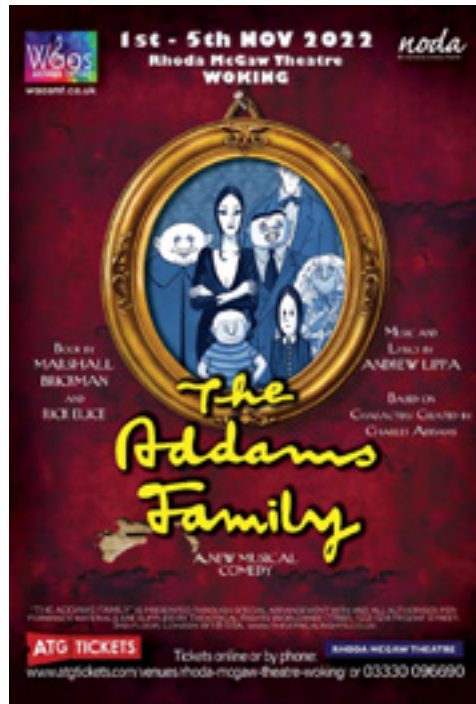
# From Physio to Theatre Director



The cast of The Addams Family

Member of the local community, Martine Young has taken part in many productions with Woking Amateur Operatic Society, or WAOS for short, both as a member and director, undertaking previous shows such as Carousel and Moll Flanders. Originally a Physiotherapist by profession, Martine now goes on to tackle a different set of bones altogether in the musical adaptation of The Addams Family. The story featuring a more grown-up Wednesday Addams and her new love interest Lucas, along with other fan favourites, as they try to navigate family and cultural differences to reach their happy ending.

Delayed by several years due to Covid-19, Martine and her team are delighted to finally be able to rehearse the musical and present it to the public at the Rhoda McGraw Theatre in Woking.



The show will run from the 1st to 5th November and help celebrate WAOS' 50th anniversary as an award-winning Musical Theatre Society.

With a cast of 35 adults and children, hailing from Surrey, Berkshire and even London, each Monday and Thursday they step away from their everyday lives to embody the ookie, spooky characters of the Addams family and their ancestors. Rehearsals so far have been filled with laughter and enthusiasm under the instruction of Martine and her creative team, and everyone is excited to take to the stage to showcase their best dance moves and singing abilities. We hope to see you there in a show that is fun for all the family!\*



Martine Young

## Churchyard Cat

I often go out at night, as do the bats, mainly Pipistrelles I think, flying about at dusk; I remember when I was a kitten there used to be lots of moths and other flying insects about for them to catch, but not so many these days - maybe they caught them all....

Still, my churchyard scored a silver in its Eco Church assessment - maybe that will encourage more wildlife.

I recently noticed more solemn humans passing through my churchyard on their way to pray for the late Queen and our new King; such a sad occasion but a remarkably smooth transition to the new Supreme Governor of the Church of England, and ultimate defender of my churchyard.



I was also sad to hear that Brian Hughes had died recently. Several humans volunteer in my churchyard - he was a very dedicated and hardworking leader for many years, and he will be sadly missed.

It will soon be early November when I try to stay in at night (can't abide all those noisy bangs and sudden flashes of light). Please make sure that you and your smaller humans take care of me, my fellow cats and even those pesky dogs, and check any bonfires for hedgehogs or other nesting creatures.

\*age 10+ (occasional nod to adult humour)

# What is the PCC?

In our previous edition of Horsell Matters we considered the ancient post of Church Warden and noted that they were members of the Parochial Church Council (PCC). So, what is the PCC? It is a relatively recent development in the life of the church, given legal status just over a century ago in 1919, to allow the laity a larger share in the burden of parochial administration and a voice in the affairs of the parish.

The function of the PCC is to cooperate with the Minister in promoting the whole mission of the Church: pastoral, evangelistic, social, and ecumenical. It is legally responsible for the maintenance and repair of the church and churchyard and for all movable property in the church, and for the financial affairs of the parish. It also has a role in ensuring that the legal responsibilities of the church as a charity are followed in areas of compliance with Health and Safety legislation, risk management and safeguarding matters. In addition, it can play a role in discussing the worship life, pastoral care, and vision of the church, with the Vicar, who has the final say on all such matters.

The PCC is required to meet at least four times a year, but in practice meets more frequently. At St Mary's our PCC consists of thirteen elected members in addition to the Vicar and the two Church Wardens; all are dedicated and hardworking, putting in many hours for the benefit of the Church and Parish of Horsell. The PCC is the base level of

administration within the Church of England. We will cover other levels in a future edition of Horsell Matters. Members of the PCC are elected for a three-year term, at the Annual Parochial Church Meeting, by the parishioners who are on the electoral roll of the church. To be entered on the roll you must be 16 or more years old, baptised into the Church of England or an affiliated church and live in the parish or habitually attend public worship in that church. Please complete an application form for the electoral roll, found at the back of the church, if you wish to vote. You will be most welcome.

Brian Sheriff, Church Warden

**FRAZERS**  
SURVEYORS

Your Local Chartered Surveyors

RICS HomeBuyer Reports

Building Surveys


Valuations

All Types Of Buildings

Over 30 Years Experience

Call Or Visit Us Today For A  
Competitive Quote

Frazers Surveyors Ltd  
Thornash House, 37 High St, Horsell, GU21 4UR  
T: 01483 730909 E: surveying@frazers.co.uk  
www.frazers.co.uk

 RICS

# Horsell Village Show 23rd July 2022

Saturday July 23rd was sunny and warm for Horsell Village Show, which was very well attended. There were more than 1,000 adults and children through the gate hoping for a great afternoon.

There were 400 entries to the show classes ranging from fruit and vegetables, flowers, floral art, cookery, handicrafts, novelty, art and photography plus many classes for children. The winners were eventually selected, with the prizes being presented by Paul Rimmer, who was a leading light at Horsell Common Preservation Society until fairly recently. The "Best in Show" was a group entry with their delightful, knitted Queens Jubilee Tea Party Tray. The top scoring person was Ben Lay with a wonderful sunflower in addition to his excellent vegetable entries.

There was much else to enjoy, from Woking Rock Choir, Mr Marvel the Magician, Scott No Fans band, games galore, a teacup ride, Morris Dancers, tombolas, a raffle and a wide range of craft stalls. Several charities were represented, raising funds and awareness for Woking & Sam Beare Hospital, Guide Dogs for the Blind, the Scouts Fundraising/World Scout Jamboree and the Surrey Poultry Association with their stall organised by five children. Horsell Residents Association was also at the show to represent the community.



Clare Wright first prize in class 25 – vase of cut mixed flowers; and best individual exhibit in division B (flowers)

Members of St Mary's Church, Horsell were there with their very welcome cups of tea, and their delicious cakes. There were burgers and Indian snacks, plus Thurston's beer, a Pimms and soft drink stall and ice-creams.

The show relies on local people to run it and help is always needed. If you would like to help, please e-mail [horsellvillageshow@yahoo.com](mailto:horsellvillageshow@yahoo.com)

Marion Piper

Secretary, Horsell Village Show  
[www.horsellvillageshow.co.uk](http://www.horsellvillageshow.co.uk)

# Homes for Ukraine in Horsell

## A brief account of how one Horsell family has given hospitality to strangers under the Homes for Ukraine scheme

When the war broke out in Ukraine, like most people we were horrified and wanted to do what we could to help. We gave donations and helped with the emergency aid efforts.

Then a text came around a local WhatsApp group. A mother and teenage daughter, their hometown in South-eastern Ukraine now occupied by Russian soldiers, fled to Poland and were looking for a family to host them in England.

There were many reasons to say no. The idea of inviting strangers into our home was scary, and as busy parents of three young children, both with full time jobs, at times we are stretched to our limit. But the more we thought about it, the more reasons we found to say 'yes'.

It helped that we were able to talk to a local Ukrainian family who have been living in the UK for many years and knew our guests personally.

So, we arranged a FaceTime call with our guests, did some furniture rearranging and told our children that we were going to welcome some extra people to our family for a while.

It was a leap of faith and I'm so glad we jumped. The night our guests arrived, I finished work and came into the kitchen full of deliciously smelling Ukrainian food and smiling faces around the kitchen table.

The first few weeks were busy and at times frustrating while we ploughed through paperwork to access the essentials like schools, doctors, bank accounts and phones. It wasn't always as easy as it



should be, but we also had immense kindness from strangers, neighbours and family.

After the initial flurry, things started to fall into place and we found a rhythm as a household.

We have shared wine and borsch together, played chess and we all celebrated when Ukraine won Eurovision. We compare old family photos of their children with ours for likenesses and talk about where we enjoy travelling.

Both our families love skiing. I hope that one day, when things are different, they will introduce us to the ski slopes of the Carpathian Mountains in Ukraine.

Our children have taken it completely in their stride. They are hearing Ukrainian alongside Italian and English, and I hope that they are learning a thing or two about kindness and helping others. Our cats enjoy the extra attention they get, too!

After four months with us, they have worked tirelessly to find a place of their own and are now ready to rent an apartment, where they will be reunited with Oksana's husband and Maria's father and their cats. We are so happy for them, but our house will feel a little lonely without them.

Honestly, I must thank Oksana and Maria for taking a leap of faith too, they trusted us to look after them when they needed it. This is really their story; I'm just privileged to share a small part of it with them. We will stay in touch and there will always be a place for them in our house, at our table and in our hearts.



*Auriol pictured second from the right with her children and Ukrainian guests*

**Checkatrade.com**  
Where reputation matters

**SURREY TRADING STANDARDS APPROVED**

**HomePro FENSA**  
APPROVED WINDOW & DOOR INSTALLERS

**Home Improvements**

**PVC • Aluminium • Timber**

**Windows • Doors • Roof Lanterns • Bi-Folds**

**Orangeries • Garden Rooms • Conservatories**

01483 727 474 | sales@krbltd.com  
109 High Street | Horsell | Surrey | GU21 4SY  
76 High Street | Old Woking | Surrey | GU22 9LN

# Getting To Know

## Helen Gravette, The Parish Administrator

Some of you may have spoken to me on the telephone when you have rung the Parish Office. I have been the administrator at St. Mary's for 16 years now – wow, time flies!

My husband and I moved to Horsell from Wandsworth back in the summer of 1994 when we were expecting our first daughter. We chose Horsell as it was an easy walk through the footpaths to the train station as we were both still commuting into London.

We then went on to have another daughter in 1999 and when she was about to start at the Junior School, I decided to pop my toe back into working life. Carol Coslett, the then Curate, mentioned to me that St. Mary's was looking for a new administrator as the present lady was moving away from the area. I knew Carol as we attended the All Age Worship services every month with our girls.

The job was very different back then and I only worked 9 hours a week, today my average weekly hours are more like 15. I have worked with three vicars and numerous curates, all of them very different, bringing new ideas to our worshipping



Helen and Milo

community. My days are very different each week dealing with funerals, the churchyard, weddings, baptisms and of course the weekly services and notices/noticeboards which makes the job interesting. I am in the office, which is attached to the vicarage, on a Tuesday, Wednesday and Friday 9am-1pm.

In my spare time I walk my little 7-year-old Maltese terrier Milo and am a member of the Chobham Rock Choir and of course attend our 10am Sunday services which are very friendly and very welcoming – like being part of a big family.



### SOMETHING TO MAKE YOU THINK

- When God blesses you financially, don't raise your standard of living, raise your standard of giving.

ADVERTISEMENT FEATURE

## Discover Horsell Lodge

Horsell Lodge Care Home provides dementia, residential and nursing care on a permanent and short stay basis.

Often, a person living with dementia will need more care and support as their condition progresses, and there may come a time when moving into a care home is the best option.

We know from over two decades of experience, that dementia is different for everyone, so the care our residents receive is too.

So many things define us as individuals, but dementia doesn't have to. We see the person behind it, and help them live the life they want, to the full.

We get to know our residents and provide care that's as individual as they are. From their living environments to their care and from everyday activity to their food, we tailor every detail no matter how big or small.

### Promoting Independence

Everyone wants to have meaning to their day, and people living with dementia are no different. Residents with dementia are supported to make choices and decisions about their lives.



Located on the outskirts of the delightful village of Horsell in Woking

There is always plenty to do, and the team take guidance from residents and their families to plan varied and fulfilling activities to suit them personally.

### Award winning training

We train every member of our team with our unique award winning 'My World' dementia training accredited by City and Guilds.

Our training highlights the importance of meaningful activities and a stimulating environment for people living with dementia, as well as addressing clinical aspects of care, nutrition and the meal time experience.

### Reasons to choose us

As the only care home group with its own accredited City and Guilds dementia training, as well as dementia friendly design, and latest technology, you can trust that we go further.

Ask for our full guide to dementia care:

Call freephone **0808 223 5401** or visit **[caringhomes.org](http://caringhomes.org)**

Proud to be rated 'Good' by the Care Quality Commission

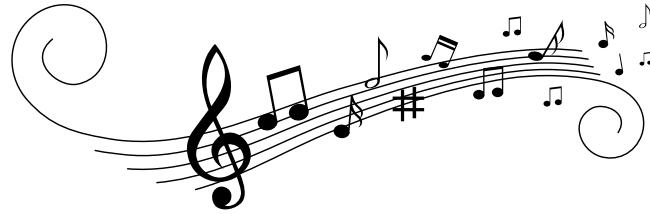


Freephone **0808 223 5401** | Online **[caringhomes.org](http://caringhomes.org)**  
Kettlewell Hill, Woking, Surrey GU21 4JA

**Horsell Lodge**  
CARING HOMES

# Can't sing! Won't sing!

I can't sing.' I've heard that many times, but what do people actually mean? Usually that they can't sing well (as they perceive it). I've never done so, but I reckon that, if you asked the fans on the football terraces if they could sing, the vast majority would say 'no.' What happens when the chants start up, though? What about when a favourite song comes on the radio, and no-one can hear you? Do you sing along? If you're a parent, I bet you sing/sang to your child(ren). OK, you might not cut it as a vocal soloist, but that's not the point. The sound produced by most people (meaning 'pretty much everybody') when singing in a group is absolutely fine, whether it's on the coach coming back from a rugby victory, joining in at the Christmas pantomime or in church. Which brings me to the church choir. Why have a choir? As I've suggested above, people sing much better when they're in a body of other people singing. If you've ever been to a wedding or a funeral where no-one except you seemed to know the hymns, did you sing out, or did you withdraw into token mouthing? The main idea behind having a choir is to have a group of singers who can lead the rest of the congregation and give it confidence.



Perhaps you'd like to come and join that group on a Sunday when you can? For special occasions, such as the Christmas carol service, the choir sings items on their own which they've prepared over the preceding few weeks. This year, the weekly practices start in church on 24th November at 7.30pm. Anyone who'd like to is very welcome to come along. There's no commitment and definitely no audition. We'd obviously like you to be at all the rehearsals, but, if it's not possible, come to those you can. It doesn't matter if you've never sung in a choir before, there are enough people there to support you. It doesn't matter either if you can't read music. It's handy if you can, but certainly not essential: we can supply you with music files for you to sing along to in the privacy of your own home to learn the tunes and to gain confidence. If any of this is of interest, chat to me after a service, or, if I'm not there, contact the church and someone'll put you in touch with me if they can't answer your queries themselves. Alan Rapley

# AUTUMN LEAVES

Colour the leaves in autumn colours!

What happens to the leaves on deciduous trees in the autumn?

Can you match the tree names with their leaves?

elm sycamore hazel rowan oak



Do you know what the word 'deciduous' means? Ask your grown up to help you learn.

Fun fact: all these trees can be found in Horsell. Can you spot them in the village?

No peeking, but if you get really stuck, here are the answers:  
1. sycamore, 2. elm, 3. hazel, 4. rowan, 5. oak



**What's On in October and November**  
for children, young people and families at St Mary's  
Your Parish Church in Horsell

For more details about any of our services and activities  
please contact the Parish Office on 01483 772134  
or email [stmaryshorsell@btinternet.com](mailto:stmaryshorsell@btinternet.com)



**Sunday Morning  
All-Age Worship**

Lively songs, thought-provoking Bible stories, fun and family fellowship at 10am



On the first Sunday  
of every month  
2nd October  
6th November  
4th December

**Jesus and Me**



A time for children aged 3+ to learn  
and worship together during our  
10am Sunday services  
Every Sunday except when we have  
All Age Worship or half term

**Tuesday Morning  
Baby and Toddler Group**



Weekly in term time  
9.30am to 11.30am  
Pop in for a coffee, chat, play  
and meet new friends

**Thursday  
Twinkle  
Tots**



**Baby and Toddler Group**  
Weekly in term time  
9.30am to 11.00am  
Come and make friends,  
enjoy play, craft,  
Bible stories and songs



4.00pm to 5.30pm  
16th October  
20th November

Fun activities for all ages  
Please bring your own picnic tea

**Friday Pop-in Coffee**

9am until noon



Why not drop in for a cuppa, a piece  
of cake and a chat once you have  
done the school drop-off?  
(Toys available)

**Stay in Touch**

Our Parish Office is open  
Tuesday, Wednesday & Friday  
9am-1.00pm  
Telephone: 01483 772134

Visit our website at:  
[stmaryshorsell@btinternet.com](http://stmaryshorsell@btinternet.com)

Follow us on Facebook



[https://www.facebook.com/  
StMarysChurchHorsell](https://www.facebook.com/StMarysChurchHorsell)

Or join our mailing list



**St Mary's  
Christmas Tree Festival**

Friday  
2nd December  
2.30pm - 6pm

Saturday  
2nd December  
10am - 4.30pm



Refreshments

Entertainment

Run in conjunction with the  
Christmas Village Fair

# The Opal Play Project at Horsell C of E Junior School



At Horsell C of E Junior School we believe that all members of our school community are 'made in the image of God'. This means that every child is precious and we want all of them to be happy and fulfilled during their time with us.



Playtime at school is a very important time for children. It is a time when children learn to make friends, resolve conflicts, be part of a team, make things, problem solve, play sports, chat, or simply daydream. It is a time when children direct what they do and how they do it.

Children in British primary schools spend 20% or 1.4 years of their school attendance in play and yet many schools have no strategic or values-based approach to play across all ages. Research shows that play contributes to children's physical and emotional health, well-being, approach to learning and enjoyment of school.

In September 2021, Horsell C of E Junior School started on the journey to become an OPAL school. OPAL stands for 'Outdoor Play and Learning' and is a mentor-supported school improvement programme. It addresses all of the areas schools must plan for if they want to strategically and sustainably improve the quality of their play opportunities, and is the only programme of its kind that has been independently proven to improve the quality of play in British primary schools.

Before OPAL, children at Horsell Junior were segregated into 'upper' and 'lower' school playgrounds. There was football in the winter, cricket in the summer, and areas for netball. There were areas of the site

that children were not allowed to use.

Today, things look quite different. Children are allowed to use all of the playgrounds and the field, so they can play with children from different year groups. They continue to play football, cricket and netball but these sit alongside a range of other activities. Children can now construct things using large tyres, put on mini productions on the school stage, play dress up using our wide array of dressing up clothes, participate in arts and crafts activities and concoct exciting recipes in the school's mud kitchen. There are also areas for children to play with small world toys and a quiet area at the front of the school for children to chat, read and daydream. Our Teaching Assistants and Sports Coach are members of the Play team – the adults in school who facilitate and support the play that takes place in the school.

Play is for the children and it is appropriate that children's voices are heard when we are planning new things to introduce at playtime.

Play is celebrated during play assemblies, and children are given the opportunity to talk about playtime, think about any problems, and make suggestions for how things can be changed and improved. Much of the equipment that we use at play time is referred to as 'loose parts' and are things that you might not think of as 'play' items at all. Loose parts which can be used for play include things like bread, milk and grocery crates, briefcases and suitcases, guttering, soft toys, buggies, prams and pushchairs, cardboard boxes, carpet samples, fabrics, cuddly toys, old pots and pans, computer keyboards and phones – even old household appliances like hoovers and microwaves! Loose parts get broken and need frequent replacing, so we rely on our parents and

members of the local community to help us restock our supplies.

The school has days and times when parents and members of the local community can drop off loose parts to the school. If you have any of the items listed, please drop them off at the school at the following times. We would be most grateful!

4th October: 8 30 – 9 00am  
1st November: 8 30 – 9 00am  
6th December: 8 30 – 9 00am

If you would like further information about the OPAL play project, please do contact the school office on [office@horsell-junior.surrey.sch.uk](mailto:office@horsell-junior.surrey.sch.uk);

Celia Wand, Headteacher



Apologies to our regular readers who enjoy our recipes - we have wanted to include as many contributions to this edition from the community as possible which means we have not had room for our regular recipe page.



## Yoga with Julie

Registered Yoga Teacher with Yoga Alliance

A Hatha style class where we connect with the breath, creating space in the body and mind. **Suitable for ALL levels**

Benefits of Yoga include increased flexibility, builds strength, energises, provides relaxation and helps to quieten the mind.

**Bring a bottle of water, a mat and leave the rest to me. Limited mats available to hire at £1 per class.**

**Venue:** Trinity Methodist Church, Brewery Road, Woking

**When:** Tuesdays and Thursdays

**Time:** 9:30 am – 10:30 am

**Cost:** £49 for 6 sessions or £10 per drop in.



**Contact: Julie 07850 423585**

## Computer Repairs Upgrades & Advice

Call Mike  
07505 100386



**We are Open and able to work using Covid safe practices**

**Computer Crashing/Virus?  
Problem with iPad or Tablet?  
Computer Running Slow?  
Supporting Home and Office  
Help with Technical problem**

Apple, Microsoft, iPad, Tablet, Windows, Linux, Internet, Networking, Broadband, Wireless LAN, Raspberry Pi, Software, Hardware

**Office: 01483 830200  
Email: [mike.sheldon@thecomputervan.co.uk](mailto:mike.sheldon@thecomputervan.co.uk)  
Web: [www.thecomputervan.co.uk](http://www.thecomputervan.co.uk)**

# Heritage Open Days

It is always a pleasure to organise this annual weekend. The church is attractive from the outside and full of historic items inside.

We had two very successful days with a good number of people through the doors. Having the Tower open is always a draw and was well supported. Sad as it was, that the 167-year-old tree had to be removed for safety reasons, people commented on how good the views are from the top of the tower. It was also interesting to see that many of the 'climbers' then looked around the church.

The refreshments (all home-made cakes) are an attraction, too.

One of the most fascinating items we possess is a large-scale map (1896) of Horsell Village and its surroundings. The children that search for their homes find it a challenge, as the village was very rural.



*Spectacular view looking from the tower*

Several farms are still here, including Well Farm and Whopshott Farm. including Well Farm and Whopshott Farm.

Also interesting is that the Red Lion and Crown were here then. The many photographs are fascinating, giving us an idea of how the village has changed.

An addition was the opportunity to leave a message in the book of condolence in memory of Queen Elizabeth II.

A large thankyou to the generosity of visitors with voluntary donations and thank you to all the cake bakers and volunteers who were very keen to help with answers to visitors.



# Gardening Matters

Starting a new series of articles for those with green fingers

I have lived in Horsell since 1986 and have gardened organically for over 30 years. Ridding my garden of chemicals has made it a haven for wildlife - bees, butterflies and other little creatures abound, bats take the place of birds at night and two hedgehogs are often spotted at dusk.

My love of gardening began at an early age. I enjoyed cutting my grandmother's lawn with her hand mower - probably not doing a very good job but she encouraged me to 'help'. My family moved to a flat with a garden when I was ten. We collected unwanted pansy seeds from nearby Canbury Gardens (Kingston-upon-Thames), I loved seeing the pansies grow. Weeding was a pleasure and by now I was an expert grass cutter! We grew Scarlet Emperor runner beans (I still grow them).

Three years ago, I took over a small allotment plot here in Horsell. I practise the 'no dig' method along with companion planting. In October I sow winter salad and hardy varieties of broad beans. I will also plan my garden for next year as 2022 successes and failures are still fresh in my mind. After this year's heat and drought conditions I will concentrate on growing perennials that need little or no water. Perennial sunflowers including



helianthus 'Lemon Queen', echinops, eupatorium, verbena bonariensis and sedum have all coped well. These can be divided now to make more clumps and fill gaps. Mulching around the plants will protect the roots during cold spells. Lots to do! Happy gardening.

Elna Broe



- If something is not eating your plants, then your garden is not part of the ecosystem.

## Horsell Matters: Next Edition Dec 2022/Jan2023

Copy to be sent by **Thursday 1st November** by email please to: [stmaryshorsell@btinternet.com](mailto:stmaryshorsell@btinternet.com)  
Advertising: please contact: Sales at Knaphill Print, Tel: 01483 474900 or email: [sales@knaphillprint.com](mailto:sales@knaphillprint.com)  
The Horsell Matters team extend their grateful thanks to Knaphill Print Co Ltd for producing this not-for-profit Parish magazine

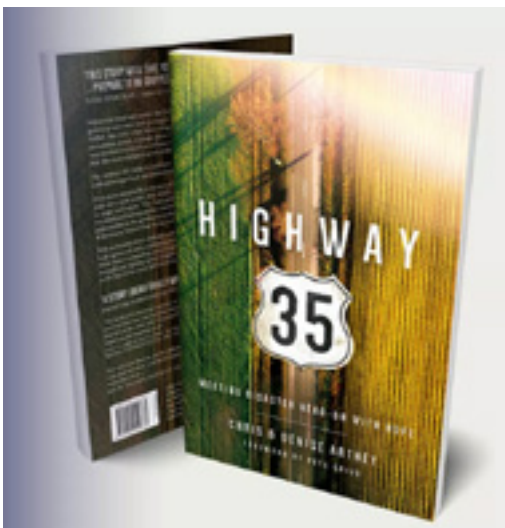
*The views expressed by contributors to the magazine are not necessarily those of the PCC of St. Mary's Church. All advertisements are accepted in good faith.*

# Book Review

## Highway 35 by Chris & Denise Arthey

### Meeting disaster head-on with hope

This Surrey based couple have jointly written their account of recovery from a near fatal motorbike accident that occurred in Texas, US in May 2008, just a few hours into their life-long dream to take a US road trip on the back of a Harley Davison. A drunk driver ploughed into them head-on. Both suffered life changing injuries: each had their left leg amputated above the knee and Chris also sustained serious head and internal injuries.



Chris and Denise tell their story with help from those either involved in or immediately after the accident, as both had lost their own memory of that day. What is remarkable about their recovery is their sheer perseverance in the face of adversity and the lack of anger toward the drunk driver. As the chapters progress the reader learns about their experience of the intertwined American medical insurance and hospital systems and of the criminal and civil courts; their determination to recover is infectious

as their lawyers battle on, and their blood-relatives, friends and church family rally to support them achieve truly remarkable outcomes. As a couple they literally walk each step of their recovery together. What does not break them simply makes them stronger, as a married couple and in faith. Chris even goes on to run marathons, compete in triathlons and climb mountains. Extracts from the Bible are interspersed throughout the book, but don't

be put off. This is not a Bible bashing autobiography. The forward is by Pete Greig, another Surrey based man who describes their story as "utterly inspirational" written by "ordinary people...who get up each morning and keep going, against the odds, in spite of extraordinary challenges..." If you want an example of love (human and divine), honesty, forgiveness and determination, the Arthey's have it. Published 2022, Muddy Pearl. ISBN 978-1-910012-83-3

# Do you enjoy...?

- Board games
- Playing the piano
- Reading poetry
- Listening
- Chatting
- Craft
- Throwing ball for a dog
- Walking
- Pottering in the garden
- No bake cookery
- Balloon games
- Quizzes
- Knitting



If so... why not come to enjoy these interests at Kettlewell House Nursing Home and enhance the lives of people who live here?

Please contact Kate:  
on 01483 221900 or 756116

Any age  
Any time  
Any frequency



**garden service**

- Lawn Care
- Tree Care
- Hedge Cutting
- Fencing
- Weeding
- Feeding
- Beds
- Borders
- Planting
- Regular Maintenance
- Logs for sale

Does your garden need the personal touch?  
Local gardener now working in your area available to assist with all your garden needs.

**For all enquiries please contact Julie on:  
01483 836490 / 07850 423585**

Fully Insured, References available.

NEXT OPEN MORNINGS  
Friday 10th March  
Friday 12th May  
9am - 11am  
REGISTER NOW FOR 2023, 2024 AND BEYOND

Because your child deserves to be

# nurtured

A supportive community that nurtures individuality and confidence.

Please register your interest online:  
W: [www.st-andrews.woking.sch.uk](http://www.st-andrews.woking.sch.uk)  
E: [admissions@st-andrews.woking.sch.uk](mailto:admissions@st-andrews.woking.sch.uk)  
T: 01483 760943

ST. ANDREW'S

SCHOOL · WOKING

INDEPENDENT DAY SCHOOL FOR GIRLS & BOYS AGED 3-13

~ Developing potential for life ~

[@StAndrewsWoking](#)
[@standrewsschoolwoking](#)
[@standrewsschoolwoking](#)

# What's On in Woking?

## In Horsell Epworth Choir has two performances coming up.

### Gilbert & Sullivan's 'HMS Pinafore' and a Christmas Concert

On **Saturday 12th November** at 7.30pm in Trinity Methodist Church, Brewery Road, Woking, Epworth Choir will be performing Gilbert & Sullivan's 'HMS Pinafore', with professional soloists. On **Saturday 17th December** at 7.30pm their Christmas concert will take place in St Mary's Church, Horsell. Come along to hear carols old and new with plenty of audience participation! Ticket prices for both performances and how to book are detailed on [www.epworthchoir.org](http://www.epworthchoir.org)

The choir has a long history of raising money for charity and this season are supporting Home-Start (Woking & Runnymede), Jigsaw and Citizens Advice Woking (CAW).

If you want to join as a singer, they are a friendly and supportive non-auditioned choir. If you're looking for a new hobby or thinking about returning to singing, then look at their website and join a rehearsal on Wednesdays at 7.30pm in Trinity Methodist Church (term time only) or contact [secretary.epworth@gmail.com](mailto:secretary.epworth@gmail.com)

## In Woking two lectures from the Arts Society in Mayford.

The lectures are held in the **town centre cinema, Nova Cinema Complex in The Peacocks Centre, Woking**, GU21 6GQ, easily accessible for Horsell residents. For both screenings the cost for non-members is £10. Apply in advance via the Membership secretary Hugh Shaw: [hshaw05@talktalk.net](mailto:hshaw05@talktalk.net) or 01483 767070.

### The Field of Cloth of Gold

6000 Englishmen in France for 18 days; Lecture given by Jo Mabutt **Thursday 13th October** at 10.30 am

In June 1520 Henry VIII and Francis I meet to ratify an Anglo-French alliance and celebrate the betrothal of Henry's daughter Mary to the Dauphin. Both have imperial ambitions and are eager to display themselves as magnificent noblemen and warrior kings. Each brings an entourage of 6,000 to a field south of Calais for 18 days of various events and entertainments. The logistics of transporting, accommodating, ordering, feeding and watering, protecting and entertaining the English contingent for this spectacular event is staggering. How was it all achieved?

### The Entire World on his Panel

Jan Brueghel; Lecture given by Chantal Brotherton-Ratcliffe **Thursday 10th November** at 10.30 am

The younger son of the famous artist Pieter Bruegel, Jan did not inherit the right to copy his father's pictures as his elder brother Pieter the Younger did. Instead, he had to invent a different realm of subject matter for himself, and he turned what was doubtless his short-sightedness to use, painting pictures of exquisite detail and entrancing miniature scale. His landscapes are microcosms of the known flora and fauna of his day, and we can feel his delight in discovering new species of tulip, say, or of parrot. The beautiful scenes he painted are analysed in this lecture, but above all, they are presented for the sheer enjoyment of the audience.



**Annual Memorial Service**  
**6.30pm**  
**Wednesday**  
**2nd November 2022**  
Remembering with thanksgiving  
those who have died



Saint Mary the Virgin



**HORSELL CHRISTMAS MARKET**  
**HORSELL HIGH STREET**  
**Saturday 3<sup>rd</sup> December 2022**  
**Starts at 1pm until 5pm**

**Craft stalls, street food, local bands, face painting,**  
**Princes famous burgers and Thurstons local brew**  
**Horsell Gold, The Cricketers mulled wine,**  
**fundraising stalls and Father Christmas.**  
[xmas@horsellresidents.com](mailto:xmas@horsellresidents.com)

**St. Mary's Church**  
**Christmas Tree Festival**  
**The church will be filled with trees decorated**  
**by local businesses and clubs**  
**with entertaining themes**  
**Limited parking**



## How English has changed over the last 1000 years

### Psalm 23

#### Modern (1989)

The Lord is my shepherd, I lack nothing.  
He lets me lie down in green pastures.  
He leads me to still waters.

#### King James Bible (1611)

The Lord is my shepherd, I shall not want.  
He maketh me to lie down in green pastures.  
He leadeth me beside the still waters.

#### Middle English (1100-1500)

Our Lord governeth me, and nothyng shal defaillen to me.  
In the sted of pastur he sett me ther.  
He norissed me upon water of fylling.

#### Old English (800-1066)

Drihten me raet, ne byth me nanes godes wan.  
And he me geset on swythe good feohland.  
And fedde me be waetera stathum.

## Recipe for a Family

5 cups of Love  
A dash of Kindness  
4 Cups of Sharing  
6 tablespoons of Thoughtfulness  
A pint full of Laughter  
5 teaspoons of Understanding  
A sprinkling of Patience  
A handful of Trust  
A pinch of Respect  
All wrapped up in the abiding love for our Lord

Are you looking for or thinking about a new kitchen?



We are an independent kitchen supplier in Knaphill offering a mix of modern, traditional and In-Frame kitchens. We are also an official dealer of Quooker taps, the revolutionary water tap providing 100°C instant boiling water.

Please get in touch for a free design consultation, or feel free to schedule an appointment to visit our showroom and view the ranges and samples we have on display.



We have a lot going on behind the scenes and Inspire Kitchens will soon be expanding! Watch this space...



info@inspirekitchensuppliers.co.uk 01483 472814  
 48, High Street, Knaphill, GU21 2PY  
 www.inspirekitchensuppliers.co.uk

# Confessions of a Hungry Newshound

## Woking News & Mail

I write a weekly column for the Woking News & Mail. On learning this, people invariably ask “Where do you find things to write about?” My usual reply is “I don’t know. Perhaps you can help me?!”

It is for that reason that you will usually find me in the St Andrew's Room at St Mary's church on a Friday morning. I'm there to search for things to write about - and the coffee and homemade cakes of course. Sometimes people will say “Have you heard about...?” “Do you know what is going on at...?” and so on. Sometimes I do hear something I can write about. But if I don't, the cake is always delicious.

Recently, midway through my coffee and shortbread, the Rev'd Dmitry gave me a copy of the August-September issue of Horsell Matters. He was, he told me, on the look-out for contributors to the magazine. After all, I write a column weekly – sometimes rather weakly in my opinion – so a “few words” occasionally should be simple. Dmitry is one of those people whom, before you know it, you have promised



to help. I am an irregular attender of church services and yet he has never admonished me. So, to cobble together a few words would be a sort of penitence, wouldn't it? With his words of encouragement, his suggestion to contribute a brief piece for Horsell Matters was bordering on subliminal. But I could see the biblical connection. Matthew 25 14-30 to be exact. The parable of the talents.

How could I refuse?

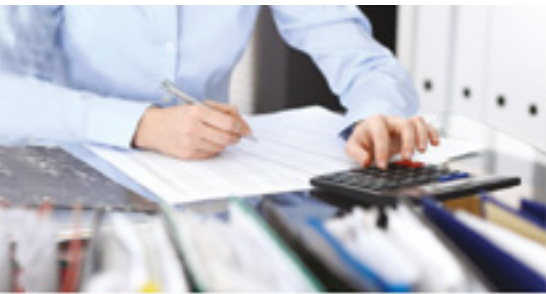
And it just may encourage people to come forward with suggestions for my page - polite ones, I trust.

Ann Harrington



### SOMETHING TO MAKE YOU SMILE

- Which day of the week has an anagram? Answer on page 18.



## BOOKKEEPING AND PAYROLL EXPERTS

- Bookkeeping – day to day entry, VAT returns, management accounts, reconciliations
- Payroll – weekly and monthly processing, starters, leavers, RTI, P60s
- Auto Enrolment

We want to take away the headache of bookkeeping and payroll so you can concentrate on the more important aspects of running your business.

Please contact us for a free consultation to discuss how we can help support your business.

**Tel: 01483 755311**

Email: [mail@pabsco.co.uk](mailto:mail@pabsco.co.uk)

Web: [www.pabsco.co.uk](http://www.pabsco.co.uk)

Sundial House, High Street, Horsell, Woking, Surrey, GU21 4SU

SURREY • BERKSHIRE • HAMPSHIRE • LONDON

**pabsco**  
PAYROLL & BOOKKEEPING SUPPORT

*Sophie Sews*  
CURTAINS | BLINDS | INTERIORS

We are a small local company that creates bespoke curtains and blinds made-to-measure in Woking and Surrey. We also make a range of co-ordinating soft furnishings to complement your made-to-order curtains and blinds, including cushions and upholstery.

We offer a bespoke and individual service where we measure, advise, make and fit all our work. We aim to spend time with you to build a picture of your aspirations for your home, thereby reducing the rather daunting task of choosing styles and fabrics.

*In short, we listen, we design, we create and we fit. That's Sophie Sews.*

76 High Street, Horsell GU21 4SZ  
01483 598056  
[sophie@sophiesews.com](mailto:sophie@sophiesews.com)  
[www.sophiesews.com](http://www.sophiesews.com)



### CONVEYANCING AND PROBATE PRACTITIONERS

We offer the below services to our clients, conducted in a friendly, professional, supportive manner. We are excellent communicators using both technology and traditional standards of service to suit our clients.

- PROPERTY LAW SPECIALISTS
- SELLING AND/OR BUYING A PROPERTY
- REMORTGAGES • TRANSFERS • PROBATE
- WILLS • DECLARATION OF TRUSTS
- LASTING POWERS OF ATTORNEY
- COMMISSIONERS FOR OATHS

Please telephone or email for a free estimate or for further information.

Business Hours: 9am to 5.30pm Monday to Friday  
Free Parking

T: 01483 485700 F: 01483 485701

E: [info@lyonsandcompany.co.uk](mailto:info@lyonsandcompany.co.uk)

6 Anchor Crescent, Knaphill, Woking, Surrey GU21 2PD

# Woking Funeral Service



**Proudly serving your local community since 1880**

Woking Funeral Service are here to support and guide you. We offer a friendly, professional service to families.

**Horsell**

**01483 355 752**

78 High Street  
GU21 4SZ

**Call or visit our team in branch. Rachel Chambers and Debby Loughman are on hand to offer their experience and local knowledge to support you with all your bereavement needs.**

- 24-hour service
- Bereavement advice
- Transparent pricing
- Private chapel of rest
- Floral tributes
- Memorial masonry
- Home visits
- Prepaid funeral plans
- International repatriation

**We are here to help 24 hours a day.**



[www.wokingfunerals.co.uk](http://www.wokingfunerals.co.uk)





Scan to find out more

## Discover our unique dementia care

So many things define us as individuals, but dementia doesn't have to. We see the person behind it, and help them live the life they want, to the full. As the only care home group with its own accredited City and Guilds dementia training 'My World', innovative dementia friendly design, and support for the whole family, you can trust that we go further.

Freephone  
0808 223 5401

Online  
caringhomes.org

Kettlewell Hill, Woking, Surrey GU21 4JA

Horsell Lodge

CARING HOMES

**euronics**  
the home of electricals

**Price match guarantee**



Price Match Guarantee | Super Service | Expert Knowledge | Contact-Free Delivery

**BOSCH**  
Invented for life

**1400 Spin 7kg Washing Machine**

WAJ28008GB



- 14 progs inc delay start & hand wash
- Button/dial control, LED display
- Reload function
- Dimensions: H84.8 x W59.8 x D54.6cm

Only  
**£399.00** | 2 Year Warranty  
D Energy Rated

**BOSCH**  
Invented for life

**12 Place Settings Dish-washer**

SMS2ITW08G



- 5 programmes, digital display
- Eco wash feature
- Delay start
- Dimensions: H84.5 x W60 x D60cm

Only  
**£379.00** | 2 Year Warranty  
E Energy Rated

**RSM**  
Domestic Appliances  
FRIENDLY SERVICE • BIG SAVINGS • FAST DELIVERY

**YOUR LOCAL DOMESTIC APPLIANCE SUPERSTORE**

Knaphill • Guildford • Ashted  
Bookham • Epsom Downs

rsmdomesticappliances.com Call 01483 475000

Terms and Conditions apply. Sold as an agent of Euronics Limited. All rights reserved. All offers are subject to availability while stocks last. Delivery and installation charges may apply. Exclusions and radius apply. See in store for full details. Images for illustration purposes only. Copyright Euronics 2022. E&OE 2022.



# Your Property Partner Since 1992

Over the past **30 years** we have helped thousands of people sell, buy and rent.

From first time buyers buying their first home, to up-sizers with expanding families and then downsizers when they've flown the nest - we've been there for all of them.

We are Independent Estate Agency at it's best, and we are Your Property Partner For Life.

**For an up to date property valuation, get in touch.**

**Horsell**  
87 High Street, Horsell, GU21 4SY  
Tel: 01483 755222

[seymours-estates.co.uk](http://seymours-estates.co.uk)



## Seymour's

Celebrating 30 Years