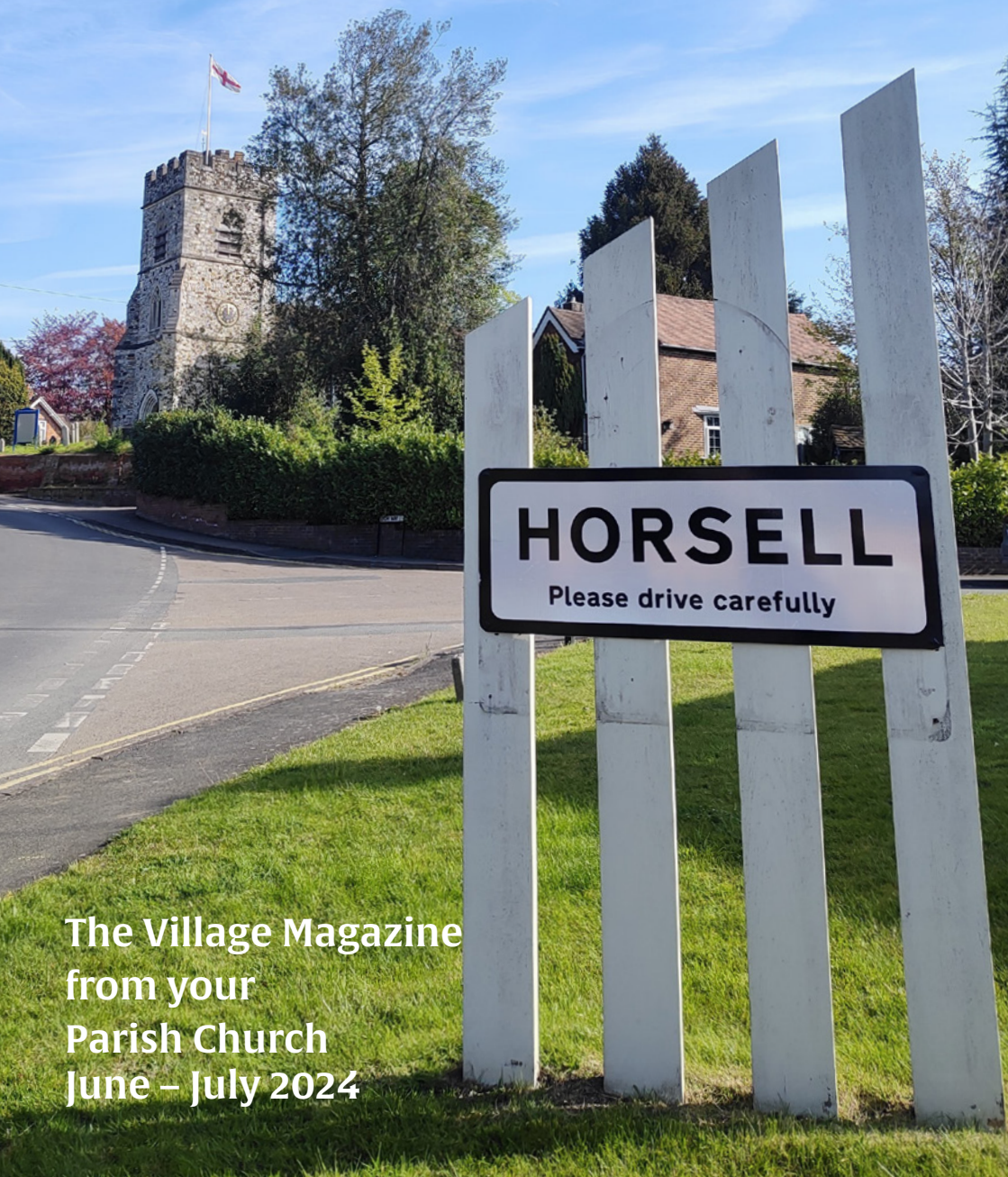


Horsell Matters



The Village Magazine
from your
Parish Church
June – July 2024

Horsell Directory

St Mary's Church	www.stmarys-horsell.org.uk	
	Baptisms, Weddings or Funerals	772134
Parish Office open	Helen Gravette Tues 9am-4pm, Wed & Fri 9am-1.00pm	772134
	stmaryshorsell@btinternet.com	
Vicar	Revd Dmitry Lutsenko vicar@stmarys-horsell.org.uk	755618
Children & Families' Worker	Rebecca Connolly childrenandfamiliesstmarys@gmail.com	772134
Church Wardens	Brian Sheriff Mark McMurtrie	474975 07815 635609
Treasurer	David Leach	823439
Cathedral Link	Gill Saville	773799
Pastoral Assistants	Margaret Johnson Hilary Mitchell Coral Colclough	762481 715459 747481
JAM (Jesus and Me)	Rebecca Connolly (3+) 10am most Sundays	772134
Tiny Treasures	Rebecca Connolly, St Andrew's Room Tues 9.30am to 11.30am, term time	772134
Twinkle Tots	Rebecca Connolly, St Andrew's Room Thurs 9.30am to 11.30am, term time	772134
Bell-ringers and Servers	Alan Nichols [occasional] Tues. evening practice	767852
Trinity Methodist Church	office@trinitywoking.org.uk	730754
Horsell Evangelical Church	Revd Andrew Bents	822259
To Book the Village Hall	Paul Bowyer	764047
Parish Institute	www.horsell-parish-institute.org.uk	772134
Horsell Village School	Infants Head Teacher – Mrs J Reeve	714804
Horsell C of E School	Junior Head Teacher – Mrs C Wand	761531
Woking High School	Head Teacher – Mrs M Walter	888447
Halstead St Andrew's School	Acting Head Teacher Miss M Eaton	760943
Horsell Care	Helpline	07552 553414
Residents Association	Alan Taylor ajrolyat@gmail.com	
Scouts, Beavers, Cubs	Ali Stubbs gsl@horsellscouts.org.uk	07734 424568
Explorer Scouts (14-18 Yrs)	Roy Thompson explorers@woking.scouts.host	
Guides & Brownies	www.girlguiding.org.uk/information-for-parents	
WI Horsell Afternoon	Alison Evans-Wyatt amevans705@gmail.com	765570
	Meets on 1st Thursday at 1.45pm in the Village Hall	
WI Horsell Evening	Mrs Joan Cox	760783
	Meets on 4th Tuesday at 7.45pm in the Village Hall	
Woking Police Station	dial 101 from mobile or landline	

Homily

“Thy Kingdom Come, thy will be done on Earth as it is in Heaven”.

In this troubled world, Christians believe we have the hope of eternal salvation through our Lord Jesus Christ who was sent by God two thousand years ago to save us from our sins, born as a Jew, of the line of David, who was King of Israel a thousand years before that. Christianity offers true peace and forgiveness of our sins, dignity and freedom for all, universal love and understanding. Whilst millions are oppressed by totalitarian leaders and oppressive belief systems, we in Horsell live in freedom with a level of affluence that would be envied by most of the world population.

You may wish to exercise your freedom in the longer days and warmer weather of summer. You could volunteer in one of the many community initiatives



available in our village or join in and enjoy the Horsell Garden Safari, one of the many walking groups, do a bit of litter picking, or join one of the gardening and cooking groups. Our community choir, Horsell Sings has a summer concert on Saturday 20th July, 7:30pm at St Mary's.

Or you could come to a service at St Mary's to learn more about our saviour and how you can make God a part of your everyday life. Our freedom and prosperity have been hard won by our ancestors. This month we remember the beaches of Normandy 80 years ago and give thanks for the many sacrifices made. We have much to be thankful for, as we enjoy summer in our beautiful village community.
Brian Sheriff

SERVICES CARRIED OUT BY THE VICAR OF ST MARY'S CHURCH

Funerals, Burials and Cremations

We offer our sympathy to the families and friends of those who have died:

Jo Egan and Michael White

ST MARY'S CHURCH DIARY **JUNE 2024**

Sun 2nd	8.00am 10.00am 12.30pm	Holy Communion (CW) All Age Morning Worship Baptism
Mon 3rd	7.30pm-8.45pm	Parenting Course Session 4
Tues 4th	9.30am-11.00am 2.00pm	Tiny Treasures Baby & Toddler Group Service at Kettlewell House
Wed 5th	8.00pm	Engine Room House of Prayer
Thurs 6th	9.30am-11.00am	Twinkle Tots
Fri 7th	8.45am-12noon	Pop in Coffee
Sun 9th	8.00am 10.00am 6.30pm	Holy Communion (BCP) Parish Communion Contemplative Meditation
Mon 10th	7.30pm-8.45pm	Parenting Course Session 5
Tues 11th	9.30am-11.00am 2.00pm	Tiny Treasures Baby & Toddler Group Service at Horsell Lodge
Thurs 13th	9.30am-11.00am	Twinkle Tots
Fri 14th	8.45am-12noon	Pop In Coffee
Sun 16th	8.00am 10.00am 4.00pm	Holy Communion (CW) Parish Communion & Baptism Messy Church
Mon 17th	7.30pm-8.45pm	Parenting Course Session 6
Tues 18th	9.30am-11.00am	Tiny Treasures Baby & Toddler Group
Thurs 20th	9.30am-11.00am	Twinkle Tots
Fri 21st	8.45am-12noon	Pop In Coffee
Sun 23rd	8.00am 10.00am 6.30pm	Holy Communion (BCP) Parish Communion Peaceful Prayer & Praise
Mon 24th	7.30pm-8.45pm	Parenting Course Session 7
Tues 25th	9.30am-11.00am	Tiny Treasures Baby & Toddler Group
Thurs 27th	9.30am-11.00am	Twinkle Tots
Fri 28th	8.45am-12noon	Pop In Coffee
Sun 30th	8.00am 10.00am	Holy Communion (BCP) Parish Communion

THE CHURCH BUILDING WILL BE OPEN

Tuesdays, Wednesdays, and Thursdays from **9.30am** to **3pm**



St Mary's Church, Horsell: @StMarysChurchHorsell

CW means Common Worship. **BCP** means Book of Common Prayer.
All correct at the time of going to print.

For further details please look at our website: www.stmarys-horsell.org.uk

ST MARY'S CHURCH DIARY **JULY 2024**

Mon 1st	7.30pm-8.45pm	Parenting Course Session 8
Tues 2nd	9.30am-11.00am 2.00pm 8.00pm	Tiny Treasures Baby & Toddler Group Service at Kettlewell House Engine Room House of Prayer
Thurs 4th	9.30am-11.00am	Twinkle Tots
Fri 5th	8.45am-12noon	Pop In Coffee
Sun 7th	8.00am 10.00am	Holy Communion Service (CW) All Age Morning Worship
Tues 9th	9.30am-11.00am	Tiny Treasures Baby & Toddler Group
Thurs 11th	9.30am-11.00am	Twinkle Tots
Fri 12th	8.45am-12noon	Pop In Coffee
Sun 14th	8.00am 10.00am 6.30pm	Holy Communion Service (BCP) Parish Communion Contemplative Meditation
Mon 15th	7.30pm	PCC Meeting
Tues 16th	9.30am-11.00am	Tiny Treasures Baby & Toddler Group
Thurs 18th	9.30am-11.00am	Twinkle Tots
Fri 19th	8.45am-12noon	Pop In Coffee
Sat 20th	7.30pm	Horsell Sings Concert
Sun 21st	8.00am 10.00am 4.00pm	Holy Communion (CW) Parish Communion Messy Church
Tues 23rd	9.30am-11.00am	NO Tiny Treasures Baby & Toddler Group
Thurs 25th	9.30am-11.00am	NO Twinkle Tots
Fri 26th	10.00am-12noon	Pop In Coffee
Sun 28th	8.00am 10.00am 12.15pm 6.30pm	Holy Communion (BCP) Parish Communion On Your Own Lunch Peaceful Prayer & Praise
Tues 30th	9.30am-11.00am	NO Tiny Treasures Baby & Toddler Group

ST MARY'S CHURCH DIARY **AUGUST 2024**

Thurs 1st	9.30am-11.00am	NO Twinkle Tots
Fri 2nd	10.00am-12noon	Pop In Coffee
Sun 4th	8.00am 10.00am	Holy Communion (CW) All Age Morning Worship

Bible Verse of the Year

In the last edition of Horsell Matters Revd Dmitry Lutsenko started to explain about St Mary's verse of the year, which is Proverbs 3:5-6.

The idea behind it is to apply the truth of the passage in our daily lives. I preached about verse 5 on Sunday 3rd March, and verse 6 on Sunday 5th May. If you would like to watch and listen, the recordings are available on the St Mary's YouTube channel.

Proverbs 3:6 says:

"In all your ways submit to Him (the Lord), and He will make your paths straight."

This sounds very counter cultural. In our society, submission is seen as a sign of weakness. Thus said, Proverbs 3:6 emphasises the importance of submission, not as a sign of weakness, but as an act of humility and surrender to God's perfect plan.

When we submit our hearts and minds to God, we open ourselves to His divine orchestration. We allow Him to lead us down the paths that align with



His will. This is of course not a guarantee of a trouble-free journey, but assurance that in His love and wisdom He will guide us along the best possible course for our lives.

The Holy Spirit plays a vital role in helping us submit to God's will. He empowers us to make choices that align with God's principles.

When we submit to the will of God with the help of the Holy Spirit, the promise of the passage unfolds, and that is, "He will make our paths straight".

I do not know what you may be going through right now, but I do know that God is faithful. May I encourage you to pray about your situation, submit to God's will and allow Him to lead you through the challenges you may be facing right now. Amen

Revd Dmitry Lutsenko

Trust in the Lord with all your heart and lean not on your own understanding;
in all your ways submit to him, and he will make your paths straight.

Do not be wise in your own eyes; fear the Lord and shun evil.

Proverbs 3: 5-6

Party time – Reasons to Celebrate!

The St Mary's children's Christmas party was attended by 105 children and adults and the Easter party saw that number increase to 130.

Rebecca Connolly, St Mary's Children and Families Worker and a team of volunteers helped children, aged from babes in arms to 11 years old, to celebrate together, to mark these important times of year in the Christian calendar. Both events were free and included fun Christmas themed games and at both parties the children made crafts. Refreshments were provided for everyone.



Some of the crafts included making snowman iced biscuits, lollipop Christmas trees and biscuit Easter gardens, stained glass window crafts, a colouring table, a playdough table, decorating crowns and Easter shapes,

and card making to name but a few. At the Easter party the children also watched The Lego Easter Story (from Go Chatter) and Rebecca gave a short talk about why Christians celebrate Easter.

The Horsell Junior School Handbell Club performed brilliantly at both events.

Following the success of these parties, a Light party is planned for next term. Watch out for details.



Easter themed artwork



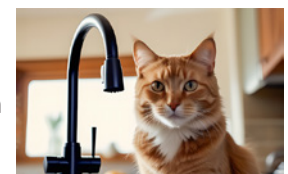
Easter themed artwork

Churchyard Cat

Us cats do need to be looked after by our humans when it gets hot, as many drinking places can dry up. We need our water bowls topped up, and adding some ice cubes helps to keep the quenching water nice and cool.

We also like to find shady places for a snooze, so please check on any open sheds or summerhouses before you lock them up; temperatures can quickly rise to dangerous levels in closed spaces. I especially appreciate regular grooming to help brush away any old hair and help me stay cool (and handsome).

I don't see a lot of other cats in my churchyard. I think it's due to the trees - they don't like their bark!



Grave Matters

Near the north-east corner of the north aisle is the modest grave of Albert Richard James Broderick and his wife, Mary Isabella (known as Polly).

Albert and Mary were both born in Plymouth and married in 1891. Albert's father was a prison warden at Princetown (Dartmoor) and Parkhurst before coming to Woking Prison by 1881 where he was a 'Warder discipline clerk'. The family were with him, and Albert was a pupil teacher, taking several examinations to improve himself, and by 1891 he was an elementary schoolmaster lodging in Guildford. In 1899 he became a popular headmaster of Knaphill School, being quickly promoted to head of Goldsworth School in 1902 at a salary of £120 pa, soon rising to £130. He was a man of many interests: he sang at and arranged concerts, he was organist at Old Woking and Bisley churches, he inaugurated Goldsworth School Band, he was in the Territorial Army, he did shooting, radio, bowls, and helped to found Woking's library. In 1908 he was elected to Woking Urban District Council (UDC) with a majority of 3, and at the end of his first three-year term, his summarised achievements included drainage in Horsell, and he was easily re-elected as the People's Rights Candidate. With the coming of World War I he gained a commission in the Territorial Division of the Queen's Regiment being soon released to return to his many civil duties.



The Broderick family

In 1921 he became the twelfth Chairman of Woking UDC, but lost his council seat for a while due to a Ratepayers' Party landslide. In 1923 his son Albert left for Australia to seek his fortune and some fascinating letters, still in family hands, are online at <https://www.broderick-letters.me/>. He retired as headmaster in 1927 and finally left Woking UDC in 1929 when he moved to Horsell Park, becoming churchwarden of St Mary's, Horsell. His wife died in April 1945, aged 78 after a short illness and Albert died on 1 Feb 1951 aged 86, having moved to his daughter's house in Horsell Vale. A life much devoted to the service of Woking. Rosemary and Richard Christophers



The Broderick grave

Sources, all online: Ancestry, FindMyPast, British Newspaper Archive.

Joe loves to paint beautiful landscapes.

At Horsell Lodge, he still can.



At Horsell Lodge, you can continue doing what you love most. Whether it's pursuing a favourite hobby, connecting with others who may share your interests, or simply enjoying the comforts of home, we're here to support you every step of the way.

Call freephone

0800 223 5352

Find us online

caringhomes.org

Kettlewell Hill, Woking, Surrey, GU21 4JA

This rating is correct at time of print

BOOK A VISIT TODAY

Horsell Lodge

CARING HOMES

Getting to Know

Sophie, the talent behind one of Horsell's businesses, *Sophie Sews*

When did you know you wanted to become a business owner and entrepreneur?

It was quite by accident. I've always loved interiors, and I went on a curtain-making course after finishing my Interior Design BTEC. I then started making curtains and blinds for friends and family, and the business grew from there.

How did you get the idea for your business?

During my childhood, I spent every spare moment endlessly redecorating and reorganising my bedroom, and I thrived in the creative subjects at school. Art, Drama and Textiles became my passions. As I mentioned, I went on to do a National Diploma in Interior Design before setting my sights on interior design for the residential market.

Fabrics are a real passion of mine, so I naturally specialised in curtains, blinds and cushions. Starting from my dining room table making my curtains, I quickly progressed to client orders and then making for other designers.

After having my second daughter, I realised my real passion was not just for the actual sewing but the design. The product knowledge of which pole will fit where, the fabric colours, designs and textures and putting it together.

How do you come up with new ideas for your business?

Bouncing ideas off of friends, family and colleagues and sharing their ideas creates excellent opportunities to add new elements to the business.

What motivates you?

My biggest motivation is helping people

make their homes beautiful. I love what I do. Some of the most original artists have been influenced by the most significant creators that painted before them. Since 2012, I have been lucky enough to have had a front-row seat in homes all over Surrey and beyond - big houses, small houses, flats, bungalows and mansions. I have gained so much experience from every window I've hung a blind on to every sofa I've designed a cushion for. But I have had some help along the way.

What is the best piece of advice you have been given?

Never put all your eggs in one basket.

Who is your biggest inspiration?

My biggest inspiration is Interior Designer Kelly Hoppen, one of the world's most celebrated and sought-after interior designers. Kelly's ever-evolving style, defined by a subtle fusion of clean lines and neutral tones and intuitively balanced with an opulent warmth, has been honoured with numerous prestigious awards and accolades, including a CBE for services to interior design in 2009.

What do you like best about Horsell?

I love both Horsell and Chobham common where I walk my dogs. Horsell has that winning combination of the best of urban and rural life right on its doorstep.

What do you do to relax?

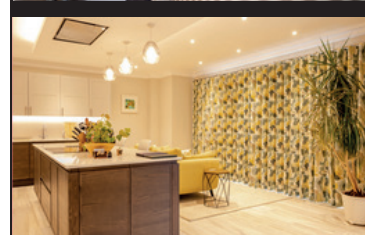
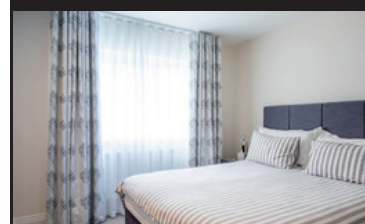
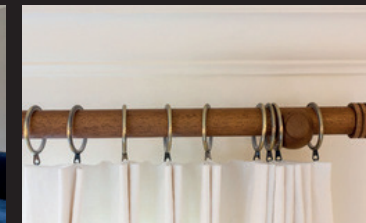
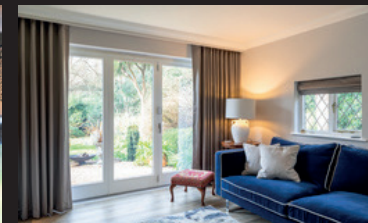
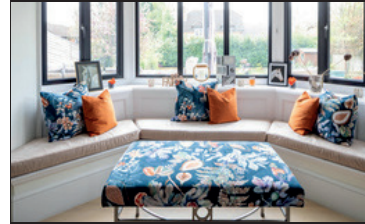
I always like to be busy; when I have a moment to relax, I enjoy walking my dogs, Laurie and Hallie.

What is your future ambition?

To keep doing what I love and grow *Sophie Sews*.

Sophie Sews

CURTAINS | BLINDS | INTERIORS



Renovating or refreshing your home?

Experience the best in bespoke, made-to-measure soft furnishings. Call now for an in-home design consultation or visit our shop in Horsell.

Let Sophie Sews turn your interior vision into a stunning reality.

CONTACT

76 High Street, Horsell, Surrey, GU21 4SZ

01483 598056

www.sophiesews.com

An 'Open the Book' Lady's Tale



The Junior School boy paused on his way along the street and gave me a kindly look. "You're an Open the Book lady," he pronounced.

I was impressed that he had remembered me, especially bearing in mind that he had last seen me, in his school hall, dressed in the old kaftan and striped tea towel headdress in which I had been playing the part of a first century Galilean. "Yes, I am. Was it alright today? Did you enjoy it?" He nodded and smiled. So that was one satisfied audience member, I was glad to know.

Along with several fellow performers, mostly from St Mary's church, I am indeed a member of an Open the Book team, invited during termtime into school assemblies in the village. The book we open is a volume crammed with stories taken from the Bible. One of us narrates; some of us read as characters in the story; some of us are non-speaking extras – and these often include schoolchildren who join the team for that one day only. We wear basic 'historical' costumes; we use homemade props. The audiences are invariably kind – perhaps it helps that they are usually asked to join in with

appropriate noises-off, and with crowd reactions.

We've been getting favourable receptions from our Horsell audiences to these ten-minute productions since 2013. Open the Book presentations are designed to be enjoyable and accessible for people of all faiths, or of none. They are backed by the Bible Society, they happen throughout Britain, and beyond, all using the same scripts. Long-term team members have DBS certificates, clearing us to work with children; there are regular training courses to update us. We have fun. We are pleased when our audiences do too.

We're always looking for more active members, from readers to costume and property makers. Of course we are! If you would like to know more, email 'Open the Book enquiry' to stmaryshorsell@btinternet.com and we'll get back to you.

Jan Mihell

Horsell Matters: Next Edition August /September 2024

Copy to be sent by 1st July by email please to: stmaryshorsell@btinternet.com

Advertising: please contact Sales at Knaphill Print, Tel: 01483 474900 or email: sales@knaphillprint.com

The Horsell Matters team extend their grateful thanks to **Knaphill Print Co Ltd** for producing this not-for-profit Parish magazine.

The views expressed by contributors to the magazine are not necessarily those of the PCC of St. Mary's Church. All advertisements are accepted in good faith.

euronics
the home of electricals

SUMMER OFFERS

at your local independent retailer

Price Match Guarantee | Super Service | Expert Knowledge | Contact-Free Delivery

BOSCH

**1400 Spin
9kg Washing
Machine**

WGG04409GB

- 14 programmes incl. 15-min quick wash
- Delay start, Eco programme
- Pause and add function
- H84.8 x W59.8 x D58.8cm

Only **£499.00** | 5 Year Warranty
A Energy Rating



BOSCH

**1400 Spin
8kg/5kg
Washer Dryer**

WNA134U8GB

- 9 programmes incl. 15-min quick wash
- EcoSilence drive
- Pause and add function
- H84.8 x W59.8 x D59cm

Only **£749.00** | 2 Year Warranty
C/E Energy Rating



BOSCH

**12 Place
Settings
Dishwasher**

SMS21TW08G

- 5 programmes, digital display
- Eco wash feature
- Delay start
- H84.5 x W60 x D60cm

Only **£399.00** | 2 Year Warranty
E Energy Rating



BOSCH

**9 Place Settings
Slimline
Dishwasher**

SPS21KW04G

- 5 programmes
- Touch controls
- Eco wash
- H84 x W45 x D60cm

Only **£449.00** | 2 Year Warranty
F Energy Rating



RSM
Domestic Appliances
FRIENDLY SERVICE • BIG SAVINGS • FAST DELIVERY

YOUR LOCAL DOMESTIC APPLIANCE SUPERSTORE

1-2 Albion Parade, High Street, Knaphill, GU21 2PS

Also in Guildford, Ashted and Epsom Downs

01483 475000 • www.rsmdomesticappliances.com

Terms and Conditions apply. Sold as an agent of Euronics Limited. All rights reserved. All offers are subject to availability while stocks last. Delivery and installation charges may apply. Exclusions and radius apply. See in store for full details. Images for illustration purposes only. Copyright Euronics 2024. Savings compared to a higher price charged for seven days.

Church Flower Arrangers

Flowers in church are not just for weddings and funerals. A team of 9 arrange flowers on a weekly basis.

We work in pairs doing 2 consecutive weeks on Friday mornings from Easter to the beginning of the following Lent. In addition, those of us who are available decorate the church windowsills etc. for Easter, Harvest Festival and Christmas. Our turn for normal weeks occurs about 3 times a year and usually takes about one and a half hours. One of the pair usually buys the flowers and reclaims the cost from St Mary's.



A St Mary's Flower Arranger

We also make small posies for Mothering Sunday and Harvest Sunday. These are always relaxed and enjoyable occasions with coffee and cake provided. After the respective services we make small bunches to be taken to people in the village who have been ill or bereaved.

If anyone in the village has an interest in flower arranging, we would be very pleased to welcome you to the team. Why not come into St Mary's any Friday morning between 9.30 and 12.00 and see what we do and please talk to me or another member of the flower team.

June Lock

Rachel Vallis Dietic Consultancy

At the root of my practice is the science of nutrition and diet. I understand how food impacts the body in health and disease. My advice is based on a firm understanding of our physiology combined with a constant awareness of the latest research and evidence based practice.

- A free, no-obligation 15-minute discovery consultation to all new clients. Accepting clinician and self-referrals.
- Face-to-face clinics in Woking, Guildford and Weybridge. Remote appointments also available.
- Tailored, supportive advice for IBS, Diabetes, Allergy, Weaning, Selective Eating, Menopause and more.



W: www.rachelvallis.com E: rachelvallis@gmail.com T: 07736 285774



SERVING THE COMMUNITY SINCE 1963



Honda e:Ny1



Honda HR-V

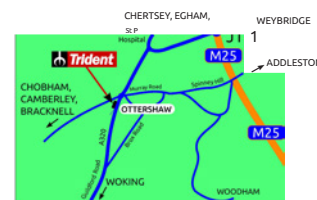


Honda ZR-V



Honda CR-V

NEW & USED CAR SALES, SERVICING & MOT, 24 HOUR FORECOURT & NISA CONVENIENCE STORE



Trident Honda
Guildford Road
Ottershaw
Surrey, KT16 0NZ
Telephone - 01932 874411

Email: sales@tridenthonda.co.uk
Website: www.tridenthonda.co.uk



- Lawn Care
- Tree Care
- Hedge Cutting
- Fencing
- Weeding
- Feeding
- Beds
- Borders
- Planting
- Regular Maintenance
- Logs for sale

Does your garden need the personal touch?
 Local gardener now working in your area
 available to assist with all your garden needs.

For all enquiries please contact Julie on:
01483 836490 / 07850 423585

Fully Insured, References available.

THE IRON LADY



39, High Street, Woking,
 GU21 4UD

T: 07900 567000

E: kassie44@hotmail.com

ALL AGE WORSHIP

Lively songs,
thought-provoking
Bible stories,
fun and family fellowship at 10am

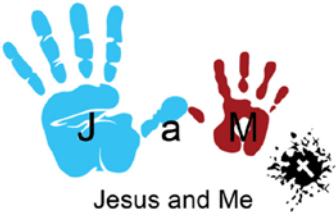


First Sunday
of every month

2nd June
7th July
4th August

Saint Mary the Virgin
Horsell

JESUS AND ME



Jesus and Me

A time for children aged 3+ to learn
and worship together during our
10am Sunday Services

Every Sunday except the first
Sunday of the month when we have
All Age Worship

Saint Mary the Virgin
Horsell

TINY TREASURES

Baby and Toddler Group
Every Tuesday (term time)
9.30am to 11.00am

Term ends
23rd July, 2024

In the St Andrew's Room
St Mary's Church, Horsell

Come and make friends,
enjoy play, craft,
and songs

Saint Mary the Virgin
Horsell



TWINKLE TOTS

Baby and Toddler Group
Every Thursday (term time)
9.30am to 11.00am

Term ends
25th July, 2024

In the St Andrew's Room
St Mary's Church, Horsell

Come and make friends,
enjoy play, craft,
Bible stories and songs

Saint Mary the Virgin
Horsell




4.00pm to 5.30pm

Sunday 23rd June
Sunday 21st July
No Messy Church in August

Explore a Bible theme through
craft, food, games or nature.
There will be a short celebration
with a story, songs and prayers.


For all ages!
Picnic tea provided!

Messy Church is part of The Bible Reading Fellowship
(BRF), a Registered Charity.
brf.org.uk

Saint Mary the Virgin
Horsell

FRIDAY POP-IN COFFEE

8.45am until noon
(term time)



10am to 12 noon
(school holidays)

Why not drop in for a
cuppa, a piece of cake and
a chat once you have done
the school drop-off?

Saint Mary the Virgin
Horsell

parenting for faith®

An eight session course to equip parents and
carers to raise God-connected
children and teens

Monday Evenings 7.30-8.45pm

St Andrews Room
St Mary's Church, Horsell
GU21 4QQ

Course Dates

Monday evenings
3rd, 10th, 17th, 24th June
1st July

To sign up to this course email Rebecca Connolly
childrenandfamiliesstmarys@gmail.com

The Parenting for Faith® name and logo are registered
trade marks of Bible Reading Fellowship, a charity
(233280) and company limited by guarantee (301324),
registered in England and Wales.
brf.org.uk

Saint Mary the Virgin
Horsell



STAY IN TOUCH

St Mary's Parish Office is open
Tuesday 9am to 4pm
Wednesday & Friday 9am to 1pm
Telephone: 01483 772134

Visit our website at
stmarys-horsell.org.uk

Follow us on Facebook
StMarysChurchHorsell

Email us:
stmaryshorsell@btinternet.com
childrenandfamiliesstmarys@gmail.com

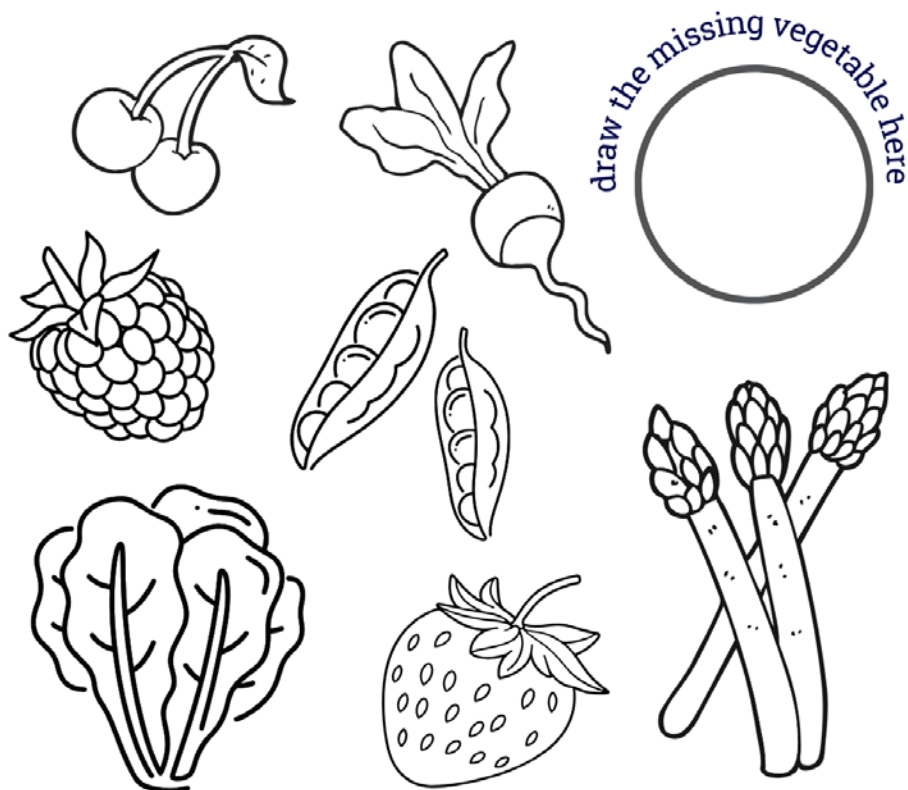
Our services are streamed via You Tube
@stmaryshorsell

Saint Mary the Virgin
Horsell

COLOUR AND MATCH FRUIT AND VEGETABLES

Can you match the fruit and vegetables to their names and spot the one that doesn't have a picture?

radish strawberry asparagus cherry
peas raspberry cucumber lettuce



Did you know? These fruit and vegetables grow in the summer.
Do you grow any of them in your garden?

Visit the Garden Safari during the weekend of 15-16th of June and spot these fruit and vegetables (and many more!) growing in the open gardens.

And look out for fruit and vegetable entries at the Horsell Village Fair!

Garden Safari

Horsell's 22nd Garden Safari is on the weekend of **15th and 16th June**. Meet up with friends, enjoy the various gardens on offer and relax with a cup of tea and cake!

15 gardens are open on Saturday and 13 on Sunday, including some new gardens, plus ones that have not opened for a few years and some old favourites. The gardens offer a lovely mix of sizes, styles, and content so get your walking shoes on or pump up the bicycle tyres in readiness for a wonderful outdoor weekend!

Brochures, still costing only £8, will be on sale from around mid-May in the usual local Horsell High Street shops and businesses, namely Seymours, Premier Store Horsell, Lisa Jones and the Horsell Framing Company.

In the past years, a magnificent £100,000 has been raised for local charities – thank you. Please join in or keep supporting this thriving annual village community event.



15-36 Cheapside



2-47 High Street

Is life getting tough?

First Steps to Support wellbeing service, initially piloted in the Guildford/Waverley area is now branching out to Woking.

First Steps to Support is a telephone, sms and email wellbeing service allowing, in a one-off call, residents (aged 18 and over) to explore with our friendly staff:

1. the causes of their emotional issues and how to address these by considering self-help and early access to talking therapies; *plus*
2. signposting to services offering wider determinant support (such as financial, housing, employment, isolation) to address the key causes of wellbeing issues; *and*
3. signposting back to a local community-based organisation for sustained support and resilience.

Contact First Steps to Support to ease the pressure.

☎ 0333 332 4753 🗨 07860 026657



@ dohel.firststeps.surrey@nhs.net

Visit: healthysurrey.org.uk/firststepshelpline



Gardening Matters

Read Elna's tips for protecting vulnerable plants from hungry garden inhabitants.

Slugs and snails have thrived in the wet weather this year and a few of my plants suffered, but thankfully, most have now recovered. I have invested in some good quality copper slug rings; every vulnerable young plant starts its life in the ground inside a ring. I find the copper rings very useful for my young bean and courgette plants and plants such as rudbeckia. After several weeks, the plant is tougher, and the ring can be moved on to another plant. Overall, these work well for me. Meanwhile, the Hosta pot sits on a rusty iron recycled fire grate, distanced from any other plant or wall so the only means of access for my slimy friends would be by parachute! I have also got some copper tape which works well on pots but just as I feel I'm winning the battle, along come the aphids. Chemical sprays are a 'no' for me as these also kill ladybirds, lacewings, and other natural predators.



Making use of a rusty iron fire grate to protect Hosta

Working with nature in my garden has, over time, created a comfortable balance and infestations of pests are now very rare.

Companion planting can also assist with pest control and can aid pollination, resulting in better crops. For example, wormwood is a strongly scented herb that can deter aphids from

bean crops. Furthermore, its yellow flowers attract hoverflies, lacewings, and ladybirds which prey on aphids. Calendula officinalis (or pot marigold) is a great companion plant for beans and French marigolds and basil are good companions for tomatoes. Shrubs and perennials can benefit too, for example thyme deters blackfly from roses. These examples are but a few.

Enjoy the nice weather, and happy gardening.

Elna Broe



Gardening is a medicine that does not need a prescription and has no limit on dosage. (Unknown).



Home Improvements

PVC • Aluminium • Timber

Windows • Doors • Roof Lanterns • Bi-Folds

Orangeries • Garden Rooms • Conservatories

01483 727 474 | sales@krbltd.com

109 High Street | Horsell | Surrey | GU21 4SY

76 High Street | Old Woking | Surrey | GU22 9LN









Yoga with Julie

Registered Yoga Teacher with Yoga Alliance

A Hatha style class where we connect with the breath, creating space in the body and mind. **Suitable for ALL levels**

Benefits of Yoga include increased flexibility, builds strength, energises, provides relaxation and helps to quieten the mind.

Bring a bottle of water, a mat and leave the rest to me. Limited mats available to hire at £1 per class.

Venue: Trinity Methodist Church, Brewery Road, Woking

When: Tuesdays and Thursdays


Time: 9:30 am – 10:30 am

Cost: £49 for 6 sessions or £10 per drop in.



Contact: Julie 07850 423585

ELECTRICIAN/HOME MAINTENANCE



Sockets, lights to full re-wires. Painting, tiling, and plaster repairs etc.

No job too small. Reliable.

Tim Dear
01483 762967
or 07973 777332

What's On

The Horsell Village Show fast approaches, to be held from **12 noon until 4.30 pm on 27th July** at Horsell C of E Junior School in Meadway Drive.

This great day out is only £2 for adults with children admitted free. We hope that many of you will have planned your entries and completed your entry forms. The forms can be found on the village show website (below), or in the show schedule, available in local shops. Even if you are not entering yourself come and see the show marquees, which will be full of wonderful entries for both adults and children.

Lots of entertainment for all is planned, including Mr Marvel the magician, music, dancers from Summerscales Performing Arts, face painting, a teacup ride, a bottle tombola and other games. There will also be a great number of varied craft stalls to tempt you. Burgers, Dee's Indian snacks, ice cream and a range of other refreshments will be on offer, including Thurston's beers, Pimm's and soft drinks.

The show will end at 4.30 pm following the presentation of the prizes.

Please put the date in your diary and join us for this always enjoyable village event.

Committee, Horsell Village Show www.horsellvillageshow.co.uk

Come and listen to Horsell Sings!

Two local choirs, Horsell Sings! and St John's Community Choir, join forces to entertain you with an evening of joyful singing with haunting harmonies at their Summer Concert on **Saturday 20th July, at 7:30pm** (doors open at 7pm), in St Mary's Church, Horsell.

Tickets: £12.50, under 14s free available from:

geoff.hughes@horsellsings.org.uk

Profits will be donated to a local charity.



Horsell Sings! The community choir rehearsing on a Tuesday evening at the Village School



A good friend is someone who thinks you're a good egg, even though they know that you are slightly cracked. And at times even scrambled.

INSPIRE KITCHENS LTD

Creating the heart of the home



We've had a facelift!

We've changed our look and colour scheme, plus we've updated all our showroom displays.

Make an appointment to come and discuss your new project with us.

We look forward to welcoming you soon.

48 High Street
Knaphill
Woking
Surrey GU21 2PY
01483 472814

www.inspirekitchensuppliers.co.uk



PTA on way to smashing fundraising target



Inspired by the success of the Christmas Fair the Horsell Schools' PTA continues to meet fundraising goals with the hope of raising **£25,000 this year**; but we need your support!

In March, our new event 'Bingo and Biryani' raised over £1000. A combination of delicious food by 'Dee's Kitchen' and first-class entertainment from Elliot of 'A.P.E (Associated Public Entertainment)' kept the crowd suitably fed and entertained.



Sima Huddy (PTA Chair) with Elliot (A.P.E) and Darman Bamra (Dee's Kitchen)

This event is just one example of how our PTA is fortunate to receive support from local businesses and community groups who donate time, equipment, or raffle prizes in aid of raising funds for crucial purchases across both schools.



Parents taking a break from perfecting the art of 'dabbing' their bingo cards

Raffle sales are some of our most successful initiatives and with the PTA Summer Fair rapidly approaching, we're putting the call out for generous local business from Horsell and the surrounding area to lend their support once again.

If you, your business, or employer can **donate a prize** please email horsellschoolspta@gmail.com

Fairs are all about fun and games, sadly our games require a much-needed refresh. **Do you have surplus wood or paint lying around? Are you a talented artist that could help make a new sign?** If you can help with donating materials or time to build some hardwearing, engaging games then we'd love to hear from you.

Save the date – **Saturday 6th July, 12:00 – 15:00 at Horsell Junior School.** Our fair is open to all and we're looking forward to welcoming the Horsell Community. It's especially nice for new parents to come and meet teachers, PTA members and each other, ahead of their children starting in September. Hope to see you there!

Horsell Schools PTA Committee

KNAPHILL PRINT CO. LTD.



BANNERS CLOTHING MAGAZINES BRANDED GIFTS MENUS

Where Imagination Takes Shape: Printing Everything Imaginable

BANNERS – Are you seeking a visually captivating method to enhance the visibility of their business or brand during their upcoming event? Compact and easy to transport making them ideal for exhibitions, trade shows, conferences, and any other event where you need to make a lasting impression. **Look no further than our extensive assortment of premium roller banners!**

BANNER DESIGN – we can take care of that too – our creative team can create custom designs that align with your clients' branding and message goals.

Call: 01483 474900 www.knaphillprint.com



PENNY & HAYTER OPTICIANS

- Independent Opticians
- Personalized service
- Warm & friendly approach
- Highest standards of eyecare
- Latest equipment
- A wide selection of frames, glasses lenses and contact lenses



To start your eye care journey, call Penny & Hayter Opticians on 01483 475205, or visit: www.pennyandhayter.co.uk

3 Albion Parade, High Street, Knaphill Woking, Surrey, GU21 2PS info@pennyandhayter.co.uk

Violin Teaching

Grading exams / conservatoire entrance. DBS checked and ISM registered

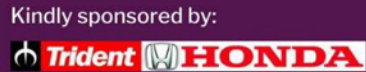
Graduate: Royal College of Music and University of Oxford

- Based in Woking
- Experience with all ages
- Face-to-face and Zoom
- Double vaccinated



CONTACT

Emmanuel Bach: 07903 582483 Emmanuel.F.Bach@gmail.com



Dragon Boat Races and Family Fun Day

Sunday 9th June 10am—4pm

Goldsworth Park Lake

Enjoy our fabulous stalls & activities plus find out who will be crowned the Champions of the lake 2024!



wsbh.org.uk/dragonboat24



Registered Charity nos. 1082798/1115439

BAILEY

PLUMBING & HEATING

SURREY

Local Reliable Independant



PLUMBING AND HEATING SPECIALISTS IN SURREY

with over 20 years of experience

CALL US

01483 343199

WWW.BAILEY-SURREY.CO.UK

INFO@BAILEY-SURREY.CO.UK





BOOKKEEPING AND PAYROLL EXPERTS

- **Bookkeeping** – day to day entry, VAT returns, management accounts, reconciliations
- **Payroll** – weekly and monthly processing, starters, leavers, RTI, P60s
- **Auto Enrolment**

We want to take away the headache of bookkeeping and payroll so you can concentrate on the more important aspects of running your business.

Please contact us for a free consultation to discuss how we can help support your business.

Tel: 01483 755311

Email: mail@pabsco.co.uk

Web: www.pabsco.co.uk

Sundial House, High Street, Horsell, Woking, Surrey, GU21 4SU

SURREY • BERKSHIRE • HAMPSHIRE • LONDON

pabsco
PAYROLL & BOOKKEEPING SUPPORT

FRÄZERS SURVEYORS

Your Local Chartered Surveyors

RICS HomeBuyer Reports

Building Surveys

Valuations

All Types Of Buildings

Over 30 Years Experience

Call Or Visit Us Today For A Competitive Quote

Frazers Surveyors Ltd
Thornash House, 37 High St, Horsell, GU21 4UR
T: 01483 730909 E: surveying@frazers.co.uk
www.frazers.co.uk



CONVEYANCING AND PROBATE PRACTITIONERS

We offer the below services to our clients, conducted in a friendly, professional, supportive manner. We are excellent communicators using both technology and traditional standards of service to suit our clients.

- PROPERTY LAW SPECIALISTS
- SELLING AND/OR BUYING A PROPERTY
- REMORTGAGES • TRANSFERS • PROBATE
- WILLS • DECLARATION OF TRUSTS
- LASTING POWERS OF ATTORNEY
- COMMISSIONERS FOR OATHS

Please telephone or email for a free estimate or for further information.

Business Hours: 9am to 5.30pm Monday to Friday
Free Parking

T: 01483 485700 F: 01483 485701

E: info@lyonsandcompany.co.uk

6 Anchor Crescent, Knaphill, Woking, Surrey GU21 2PD

Woking Funeral Service



Proudly serving your local community since 1880

Woking Funeral Service are here to support and guide you. We offer a friendly, professional service to families.

Horsell

01483 355 752

78 High Street
GU21 4SZ

Call or visit our team in branch. Rachel Chambers and Debby Loughman are on hand to offer their experience and local knowledge to support you with all your bereavement needs.

- 24-hour service
- Bereavement advice
- Transparent pricing
- Private chapel of rest
- Floral tributes
- Memorial masonry
- Home visits
- Prepaid funeral plans
- International repatriation

We are here to help 24 hours a day.

www.wokingfunerals.co.uk





HALSTEAD St ANDREW'S
SCHOOL

A PARTNERSHIP TO FORM
THE SCHOOL
OF THE FUTURE
FOR WOKING

An independent co-educational
school for ages 2-16

You are warmly invited to join us at
our next open morning on
Friday 10th May. Please visit our
website to book your place:
www.hsaschool.co.uk/open-days

NO JOB
TOO BIG,
NO JOB
TOO SMALL



Full Public Liability

- Roof Cleaning
- Driveway Cleaning
- Patio Cleaning
- Steam Cleaning
- Gutter Cleaning
- Soft Washing
- Traditional Window Cleaning
- Render Cleaning
- Sealing
- UPVC Cleaning
- Deck Restoration
- Graffiti Removal
- Carbon Staining Removal



CALL US FOR A FREE, NO OBLIGATION QUOTE

07930 970775

Email: 1stchoiceexteriorcleaning@gmail.com
www.1stchoiceexteriorcleaning.co.uk



Motormech



Vehicle Service & Repairs to all leading makes

**FREE BRAKE AND
BATTERY CHECK****

MOT TEST £39.00

**COMPLETE
SERVICE***
£179.00
INC. VAT

**STANDARD
SERVICE***
£99.00
INC. VAT

**COMPLETE
SERVICE &
MOT***
£199.00
INC. VAT

**STANDARD
SERVICE &
MOT***
£119.00
INC. VAT

Our Service Team will be happy to provide you a quotation and make a booking. You can also book online. All makes and models.
* Terms & Conditions apply. We will report to you if the spark plugs require changing.
* We'll collect and deliver your vehicle **Free of charge** within a 5 mile radius of GU2 7YB. The Complete and Standard service offer includes all makes and models up to engine size 2000cc. Additional surcharges will apply for larger engine sizes.
** Free Brake and Battery Check with Complete Service and Complete Service with MOT

BOOK ONLINE: www.motormechguildford.co.uk
OR CALL: 01483 502671

Unit 1H, Cathedral Hill Industrial Estate,
Guildford, Surrey GU2 7YB



Looking for a new *rewarding*
career in care?

We're hiring locally now!

- ♥ Great rates of pay and benefits
- ♥ Ongoing training & development
- ♥ Mileage allowance
- ♥ Employee assistance programme
- ♥ Supported by a local expert team

We are recruiting all over Guildford and Woking
plus all surrounding villages.

Outstanding *Service*. *Professional* Office Team.
Outstanding CQC Rating.

Call us on 01483 488222 or apply:
www.homeinstead.co.uk/guildford-woking



WHY SHOULD YOU CHOOSE SEYMOURS?



Partner Owned & Run

Because we're Partner run, the owner of the business will be personally involved in your sale.



20 Seymours Offices

All the care and attention of a local independent with the vast selling power of our network.



Knowledgeable Local Staff

Our staff live nearby to offer unrivalled local knowledge and expertise when you move.



Unrivalled Marketing

Attract the best buyers with high quality marketing photos, videos, brochures and social media.



National & London Buyers

Get exclusive access to buyers from 800 Guild member agents across the UK and London.



Property Finder Services

Sell with Seymours and we'll prioritise your search to find your dream home.



Supporter of Local Charities

Enjoy peace of mind working with an agent that supports local schools and charities.



No.1 In Surrey

We're proud to help more people move in our local community than any of our competitors.

If you're thinking of selling, please call us for a **free market appraisal of your property.**



Lloyd Moss
Partner



James Taylor
Partner

Seymours Horsell

01483 755222 | sales@seymours-horsell.co.uk



Seymours

Printed by Knaphill Print Co. Ltd. Tel: 01483 474900