

Horsell Matters



The Village Magazine from your Parish Church
December 2024 – January 2025

Horsell Directory

St Mary's Church	www.stmarys-horsell.org.uk	
	Baptisms, Weddings or Funerals	772134
Parish Office open	Helen Gravette Tues 9am-4pm, Wed & Fri 9am-1.00pm	772134
	stmaryshorsell@btinternet.com	
Vicar	Revd Dmitry Lutsenko vicar@stmarys-horsell.org.uk	755618
Children & Families' Worker	Rebecca Connolly childrenandfamiliesstmarys@gmail.com	772134
Church Wardens	Brian Sheriff Mark McMurtrie	474975 07815 635609
Treasurer	David Leach	07708 866196
Pastoral Assistants	Janet Johnson Margaret Johnson Hilary Mitchell Coral Colclough	591756 762481 715459 747481
JAM (Jesus and Me)	Rebecca Connolly (3+) 10am most Sundays	772134
Tiny Treasures	Rebecca Connolly, St Andrew's Room Tues 9.30am to 11.30am, term time	772134
Bell-ringers and Servers	Alan Nichols [occasional] Tues. evening practice	767852
Trinity Methodist Church	office@trinitywoking.org.uk	730754
Horsell Evangelical Church	Revd Andrew Bents	822259
To Book the Village Hall	Paul Bowyer	764047
Parish Institute	www.horsell-parish-institute.org.uk	772134
Horsell Village School	Infants Head Teacher – Mrs J Reeve	714804
Horsell C of E School	Junior Head Teacher – Mrs C Wand	761531
Woking High School	Head Teacher – Mrs M Walter	888447
Halstead St Andrew's School	Acting Head Teacher Miss M Eaton	760943
Horsell Care	Helpline	07552 553414
Residents Association	Alan Taylor ajrolyat@gmail.com	
Scouts, Beavers, Cubs	Ali Stubbs gsl@horsellscouts.org.uk	07734 424568
Explorer Scouts (14-18 Yrs)	Roy Thompson explorers@woking.scouts.host	
Guides & Brownies	www.girlguiding.org.uk/information-for-parents	
WI Horsell Afternoon	Alison Evans-Wyatt amevans705@gmail.com	765570
	Meets on 1st Thursday at 1.45pm in the Village Hall	
WI Horsell Evening	Mrs Joan Cox	760783
	Meets on 4th Tuesday at 7.45pm in the Village Hall	
Woking Police Station	dial 101 from mobile or landline	

Homily

Most are familiar with the words of a well-known Christmas carol: *'Hark! The herald angels sing'*, but do we understand their profound theological significance?

In verse 2, we sing: *'Veiled in flesh the Godhead see; hail th' incarnate Deity, pleased as man with man to dwell, Jesus, our Emmanuel.'*

'He humbled Himself by becoming obedient to death – even death on the cross.'

These words echo the passage of Philippians 2:5-11, which is one of the most profound theological statements in all Scripture about Jesus' identity and mission.

Jesus was not just a man, born in a random time and place. His birth, its time and location were preordained by God himself. He was God in his full rights, and yet *'He did not consider equality with God something to be used for his own advantage; rather He made Himself nothing by taking the very nature of a servant, being made in human likeness.'* Instead of claiming a position of authority to which He had a full right, He chose a position of service to a point that



Once we understand the purpose of Jesus' coming into this world; we are being moved into an action. We want to respond to His wonderful invitation, by saying sorry for our wrongdoings, accepting Him as our Lord and Saviour and following Him all the days of our life. And what can be a better time to do this than Christmas, when

everything around us reminds us about Him!

Why not come and join us at St Mary's for our Christmas services, the details of which can be found on page 4.

Merry Christmas everyone!

Revd Dmitry Lutsenko

SERVICES CARRIED OUT BY THE VICAR OF ST MARY'S CHURCH

Funerals, Burials and Cremations

We offer our sympathy to the families and friends of those who have died:

Mervyn Elding Dorothy Kirkman Vicki Kitkat

ST MARY'S CHURCH DIARY **DECEMBER 2024**

Sun 1st	8.00am 10.00am 6.30pm	Holy Communion (CW) First Sunday Service Contemplative Meditation
Tues 3rd	9.30am-11.00am 2.00pm	Tiny Treasures Baby & Toddler Group Service at Kettlewell House
Wed 4th	8.00pm	Engine Room House of Prayer
Fri 6th	8.45am-12noon 3.00pm-7.00pm	Pop In Coffee Christmas Tree Festival
Sat 7th	12noon-5.00pm	Christmas Tree Festival
Sun 8th	8.00am 10.00am	Holy Communion (BCP) Parish Communion
Tues 10th	9.30am-11.00am	Tiny Treasures Baby & Toddler Group
Fri 13th	8.45am-12noon	Pop In Coffee
Sat 14th	7.00pm	Horsell Sings Concert
Sun 15th	8.00am 10.00am 6.30pm	Holy Communion (CW) Parish Communion Nine Lessons & Carols
Tues 17th	9.30am-11.00am	Tiny Treasures Baby & Toddler Group
Fri 20th	8.45am-12noon 3.30pm	Pop In Coffee Woking Amateur Operatic Society Show
Sat 21st	4.00pm-5.30pm	Messy Church Christmas Party
Sun 22nd	8.00am 10.00am 6.30pm	Holy Communion (BCP) Parish Communion Peaceful Prayer & Praise
Tues 24th	9.30am-11.00am 4.00pm 6.00pm 11.30pm	NO Tiny Treasures Baby & Toddler Group Nativity Service Nativity Service Midnight Communion
Wed 25th	8.00am 10.00am	Holy Communion Christmas Day Family Communion
Thurs 26th	9.30am-3.00pm	NO Private Prayer
Fri 27th	10.00am-12noon	NO Pop In Coffee
Sun 29th	8.00am 10.00am	Holy Communion (BCP) Parish Communion
Tues 31st	9.30am-11.00am 9.30am-3.00pm	NO Tiny Treasures Baby & Toddler Group NO Private Prayer

THE CHURCH BUILDING WILL BE OPEN:

Tuesdays, Wednesdays, and Thursdays from **9.30am** to **3pm**.

Please note the church will not be open on Boxing Day or 31st December, 1st and 2nd January.

ST MARY'S CHURCH DIARY **JANUARY 2025**

Wed 1st	9.30am-3.00pm	NO Private Prayer
Thurs 2nd	9.30am-3.00pm	NO Private Prayer
Fri 3rd	10.00am-12noon	Pop In Coffee
Sun 5th	8.00am 10.00am	Holy Communion Service (CW) First Sunday Service
Tues 7th	9.30am-11.00am 2.00pm	NO Tiny Treasures Baby & Toddler Group Service at Kettlewell House
Wed 8th	8.00pm	Engine Room House of Prayer
Fri 10th	8.45am-12noon	Pop In Coffee
Sun 12th	8.00am 10.00am 6.30pm	Holy Communion Service (BCP) Parish Communion Contemplative Meditation
Tues 14th	9.30am-11.00am	Tiny Treasures Baby & Toddler Group
Fri 17th	8.45am-12noon	Pop In Coffee
Sun 19th	8.00am 10.00am 4.00pm	Holy Communion (CW) Parish Communion Messy Church
Tues 21st	9.30am-11.00am	Tiny Treasures Baby & Toddler Group
Fri 24th	8.45am-12noon	Pop In Coffee
Sun 26th	8.00am 10.00am 12.15pm 6.30pm	Holy Communion (BCP) Parish Communion On Your Own Lunch Peaceful Prayer & Praise
Tues 28th	9.30am-11.00am	Tiny Treasures Baby & Toddler Group
Fri 31st	8.45am-12noon	Pop In Coffee

ST MARY'S CHURCH DIARY **FEBRUARY 2025**

Sun 2nd	8.00am 10.00am	Holy Communion (CW) First Sunday Service
Tues 4th	9.30am-11.00am 2.00pm	Tiny Treasures Baby & Toddler Group Service at Kettlewell House
Wed 5th	8.00pm	Engine Room House of Prayer
Fri 7th	8.45am-12noon	Pop In Coffee



St Mary's Church, Horsell: @StMarysChurchHorsell

CW means Common Worship. **BCP** means Book of Common Prayer.

All correct at the time of going to print.

For further details please look at our website: www.stmarys-horsell.org.uk

Nativity Matters



New Nativity services this Christmas

St Mary's Church has held two Christingle services on Christmas Eve for many years. This year, the focus will be on the Nativity instead of the 'Christingle'.

In the making of Christingles*, hundreds of oranges are used, four cocktail sticks holding sweets and currants are stuck in, red sticky tape is put around the centre and a candle is placed in the middle, to be lit during the service. More recently the candle has been replaced by a glow-stick, which was safer. Its foot was wrapped with tin foil before insertion into the orange, adding to its non-biodegradable and non-recyclable elements. We assume that most of the oranges used would not be eaten, thus going to food waste.

As an Eco-Church we are cutting down on unnecessary waste to be more environmentally friendly, hence our decision to give a different focus to our Christmas Eve afternoon services this year.

Our Nativity services will celebrate the coming of Jesus into the world, to which you are warmly invited to attend. It's a service suitable for all ages and is especially good for children. Hear Bible stories of the nativity, with drama and carols. Instead of a Christingle a different, more eco-friendly gift will be given to the children as they leave the church.

When are the Nativity services happening?

On **Christmas Eve, Tuesday 24th December** at 4pm aimed at children aged 8 and under and 6pm for older children, and each service will have something for accompanying adults, too. Each service will last around 45 minutes. The 8s and under are encouraged to dress up as their favourite Nativity character.

At these services, we will still be supporting the valuable work of The Children's Society which helps children threatened by abuse, exploitation and neglect, through a collection.

Find out more here:

<https://www.childrenssociety.org.uk/what-we-do/our-work>



Christingle Service 2023

*The significance of each item on a Christingle is: The orange represents the world. The red ribbon (or tape) symbolises the love and blood of Christ. The sweets and dried fruit represent all of God's creations. The lit candle represents Jesus's light in the world, bringing hope to people living in darkness.

Reduce, Reuse and Recycle

St Mary's Church is taking practical action on caring better for God's earth.



The organisation Eco-Church challenges and helps churches to improve how we look after our buildings and land, community and lifestyle. Through the guidance of Eco-Church each church can work towards a Bronze, Silver or Gold award. St Mary's has so far achieved the Bronze award. We have taken many steps, including installing low-energy lighting throughout the church, and are aiming to reach Silver in 2025. We encourage our congregation and all parishioners to make changes to how they live their lives to benefit the earth.

Reduce, Reuse, Recycle are actions we can all take to help protect the earth's ecosystems and environment, and together we can make a real difference.

For example, so much of our food is needlessly wrapped in plastic and carrier bags are largely made of plastic. Much of this plastic is thrown away contributing to landfill and marine plastic pollution, which harms sea life.

Look out for ways to reduce your plastic consumption such as buying loose fruit and veg without plastic wrapping and reducing your consumption of individually wrapped processed foods. Our decision to replace Christingles this year with a more environmentally friendly alternative is another sign of Eco commitment.

Learn more at:

<https://ecochurch.arocha.org.uk/resources/lifestyle>

Churchyard Cat

In early December I expect to see many of my two-legged friends tramping through my churchyard, carrying greenery and craft to build their pine-scented Christmas trees for the **St Mary's Christmas Tree Festival** which starts on **6th December**. This is always a favourite time for me to creep in and try climbing a few trees, to pat the baubles making them swing and sway, before I am shooed out. After that, my church has several Christmas services for schools, and on **Christmas Eve, Nativity services** where chocolate will be given away - not something I go for but the

smaller two-legged ones seem to like it. The next day, I like to see lots of presents in their fancy paper; I do like the paper to pounce about in, but not too much of this human party food for me - no good for my tummy. I love a warm place to snooze when it's cold and I'll look forward to the church tower clock striking in the New Year, as I'm told it has done for most of the last 140 years.

I wish you all a Merry Christmas and happy mewing in 2025.



Be an encourager. The world has plenty of critics already. Dave Willis



Christmas in Horsell 2024

Horsell Christmas Market
road closed from The Crown to Meadway Drive
Saturday 7th December 1 - 5pm

Horsell Schools' PTA Christmas Fair
Horsell Village School
Saturday 7th December 12 - 3pm

Christmas Tree Festival
St Mary's Church
Friday 6th December 3 - 7pm
Saturday 7th December 12 - 5pm

xmas@horsellresidents.com
please note: no parking on the High Street

Second Thursday Club
Horsell Residents Association
Powered by volunteers



Horsell Sings! Christmas Concert
Saturday 14th December 7.30pm
St Mary's Church, Church Hill, Horsell, GU21 4QQ

Corra Sound directed by Amy Bebbington
Corra Sound is a well-established upper voice ensemble with a love for performing works by female composers. Excited to be supporting Horsell Sings! they promise to bring a richly diverse selection of gorgeous Christmas choral music for everyone to enjoy.

Horsell Sings! directed by Anna Tabbush
Horsell's very own community choir with a performance of joyful carols and songs for Christmas. With audience carol singing

Tickets: £15 Under 14s free. Scan me for tickets: 

Buy online at:
<https://www.trybooking.com/uk/EBXL>
or email geoff.hughes@horsellsings.org.uk

All profits will be donated to:
Samba Riding for the Disabled
Sponsored by Horsell Sings! Reg charity #1205511



Prince Roofing

Father and Son Roofing Specialists with over 50 years of experience

- ❖ Tile Roofs ❖ Slate Roofs
- ❖ Specialist Leadworks ❖ Flat Roofs
- ❖ Roof Repairs ❖ Roof Maintenance
- ❖ Storm Damage and Insurance Works
- ❖ Roof Maintenance ❖ Drone surveys
- ❖ Chimney Repairs and Rebuilds
- ❖ Fascias, Soffit and Guttering

For a free quotation call or email
Fred at Woking: 07950 875 411
Chris at Odiham: 07904 270 313
Office: 01256 702428
Email: info@princeroofing.co.uk

RESTORE OFFICIAL
A CLEANER ALTERNATIVE

SUPERIOR CARPET & UPHOLSTERY CLEANING

FREE CALL OUT QUOTATIONS
Call: Harry James: 07852 565644
Email: restore@restoreofficial.com



PROSTATE CANCER

One Man dies every 45 minutes, (10,000 each year)

- One in eight men will get Prostate Cancer during their lives, the biggest cancer killer in men
- 85% of sufferers have no symptoms
- 35,000 men diagnosed each year
- 95% of men who have early detection are cured or gain control

What can be done?

- Don't wait for symptoms
- Simple PSA Blood Test by our trained and qualified volunteer phlebotomists
- Early detection saves lives
- Results usually within one week

Book a test

Online at cts.mypsatests.org.uk or use the QR code below

Cancer Testing South - cancertestingsouth.org



Registered charity 1191738

Bible Matters



The first in a series of articles by Roy Wernham, Licenced Lay Minister

With 400 million copies being distributed annually worldwide and translated into hundreds of languages, the Bible is the world's best-selling book. Every home should have one and many millions of homes do. It is of course accessible online as well as in print.

The Bible though, is not really 'a' book at all. It is a whole library or collection of writings that the early Christian church pulled together into a single volume for convenience. It contains historical texts as well as prophecy, prayers, hymns, letters and philosophical writings that were compiled over some 1500 years. Some of these had started life as oral traditions. The earliest sections date back to around 1,000 BC or even earlier and the newest to around 200AD.

There are two main sections. The larger section by volume is the Old Testament. It was compiled before the time of Jesus and was well known to him as 'the Scriptures'. Each chapter of it was originally written on parchment scrolls rather than in the form of a book as we now have it.

The shorter section by length, the New Testament, tells the story of the birth, death and resurrection of Jesus and of how the early church developed in its formative years. It goes on to tell us about the issues that were of concern to early Christians.

The story of the birth of Jesus which we celebrate at Christmas can be found in Matthew's Gospel chapters 1 and 2 and in Luke's Gospel, also chapters 1 and 2.

The Bible is best read with the help of commentaries or daily reading notes which help you to cover the main parts of it. The staff at St Mary's can help you to find one that will be suitable for you.

Come to our Messy Church
Christmas Party on Saturday 21st
December from 4pm to 5.30pm.
All ages up to Year 6 with an adult.
Fun, crafts & food.

Horsell Matters: Next Edition February /March 2025

Copy to be sent by 3rd January by email please to: stmaryshorsell@btinternet.com

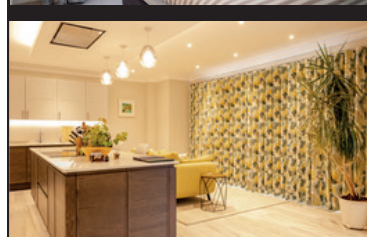
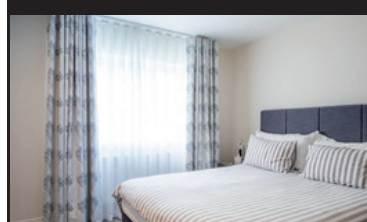
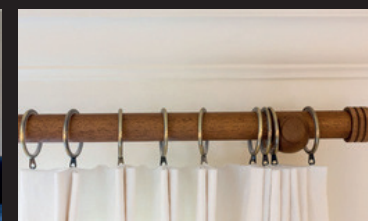
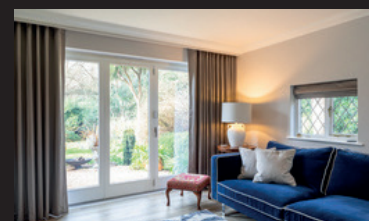
Advertising: please contact Sales at Knaphill Print, Tel: 01483 474900 or email: sales@knaphillprint.com

The Horsell Matters team extend their grateful thanks to Knaphill Print Co Ltd for producing this not-for-profit Parish magazine.

The views expressed by contributors to the magazine are not necessarily those of the PCC of St. Mary's Church. All advertisements are accepted in good faith.

Sophie Sews

CURTAINS | BLINDS | INTERIORS



Renovating or refreshing your home?

Experience the best in bespoke, made-to-measure soft furnishings. Call now for an in-home design consultation or visit our shop in Horsell.

Let Sophie Sews turn your interior vision into a stunning reality.

CONTACT

76 High Street, Horsell, Surrey, GU21 4SZ

01483 598056

www.sophiesews.com

Evita

The tale of Eva Perón, an adaptation by WAOS Musical Theatre*, offers an opportunity to reflect on the intersections of politics, fame, and humanity that define our world today.



WAOS members in cabaret mood at Woodham Hall

Set against the dramatic backdrop of 1940s Buenos Aires, the adaptation will showcase unforgettable musical numbers such as “Don’t Cry for Me, Argentina” and “Another Suitcase in Another Hall.” These timeless songs continue to captivate audiences and reflect the emotional intensity of Eva Perón’s life and legacy.

Whether you are familiar with the musical or new to the tale of Eva Perón, don’t miss this chance to experience “Evita” in a way that feels both timeless and timely, performed by one of Surrey’s finest theatre companies. Tickets start at £23.10 plus a booking fee via www.atgtickets.com



WAOS members

Evita Perón, a name that continues to echo through the halls of history, is as relevant today as she was during her lifetime. Born into poverty, she rose to become one of the most influential women in Argentine history, admired by millions and viewed as a symbol of resilience and power. Her life story, immortalized in Andrew Lloyd Webber and Tim Rice’s acclaimed musical ‘Evita’, offers timeless lessons that resonate in today’s world of political turbulence, social inequality, and the quest for change.

WAOS Musical Theatre, known for its professional-standard productions, promises a fresh and dynamic interpretation of this beloved classic.

*WAOS Musical Theatre is a musical theatre society based in Woking, Surrey, United Kingdom and was established over 50 years ago in 1972. WAOS stands for “Woking Amateur Operatic Society”, which was our original name. Since 2019, we have encompassed the name to include Musical Theatre (or WAOS MT) due to the variety of shows we now produce.



WINTER OFFERS

at your local independent electrical retailer

Season’s greetings to all our customers and thanks for your support!

BOSCH

1400 Spin 8kg Washing Machine

WGE03408GB

- 14 programmes incl. 15-min Quick Wash
- Speed Perfect, Active Water
- Add laundry feature, delay timer
- H84.5 x W59.8 x D58.8cm

Only **£429.00**

2 Year Warranty
10 Year Parts
A Energy Rating



BOSCH

1400 Spin 9kg Washing Machine

WGG24400GB

- 22 programmes incl. 15-min Quick Wash
- Speed Perfect, anti-stain system
- Add laundry feature, delay timer
- H84.5 x W59.8 x D58.8cm

Only **£599.00**

5 Year Warranty
10 Year Parts
A Energy Rating



BOSCH

9 Place Settings Slimline Dishwasher

SPS2IKW01G

- 5 programmes
- Extra Dry system
- Speed Perfect
- H84.5 x W45 x D60cm

Only **£399.00**

5 Year Warranty
10 Year Parts
F Energy Rating



BOSCH

12 Place Settings Dishwasher

SMS2ITW08G

- 5 programmes, digital display
- Eco wash feature
- Delay start
- H84.5 x W60 x D60cm

Only **£399.00**

5 Year Warranty
10 Year Parts
E Energy Rating



YOUR LOCAL DOMESTIC APPLIANCE SUPERSTORE
1-2 Albion Parade, High Street, Knaphill, GU21 2PS
Also in Guildford, Ashted and Epsom Downs
01483 475000 • www.rsmdomesticappliances.com

Terms and Conditions apply. Sold as an agent of Euronics Limited. All rights reserved. All offers are subject to availability while stocks last. Delivery and installation charges may apply. Exclusions and radius apply. See in store for full details. Images for illustration purposes only. Copyright Euronics 2024.

Event News from the PTA

Despite the unpredictable summer weather, the annual Horsell Schools' PTA Summer Fair was a huge success.

Last-minute changes meant a hair raising (and soggy) set up, but the community still showed up to support in droves - raincoats and all.

Popular Cream Teas sold out quickly and delicious home bakes and hot food ensured everyone was well fed; when the sun did finally come out the summer drinks bar didn't get overlooked either.

Event sponsors Seymour's and our friends at Goldsworth Park Rangers kept the children entertained with exciting football activities, while the queue for the Jolly Jar Tombola was longer than ever!

With such fun and games for all, it's not surprising the fair drew an enthusiastic crowd and raised over £6,000! Since then, the PTA has kept the momentum going with summer discos at the Junior School, a sold-out fireworks display, and a delightful pumpkin trail through the village during October Half Term.

Looking ahead, the PTA is gearing up for their next fundraising endeavour: the Christmas Fair on Saturday December 7th—coinciding with the Horsell Christmas Fair on the High Street and the Christmas Tree Festival in St Mary's church.

Promising to be more family fun than ever before, with games, prizes, festive



Dee from Dee's Kitchen and a talented dad cooking and sheltering from the wind

food and drink, sweet treats, magical entertainment, and marvellous children's activities. It will be a fantastic way to spend an afternoon while supporting our local schools fundraising initiatives.

Everyone is welcome, so bring your holiday spirit and join us for a festive celebration on **Saturday, December 7th, from 12-3 pm at Horsell Infant School.**



Summer Fair in full swing under ominous skies



Do you raise funds for a local charity and want to raise our readers' awareness of what you do? If so, please get in touch with the editor via the Parish Office and tell us a bit more about it.



KNAPHILL PRINT CO. LTD.



BANNERS CLOTHING MAGAZINES BRANDED GIFTS MENUS

Where Imagination Takes Shape: Printing Everything Imaginable

BANNERS – Are you seeking a visually captivating method to enhance the visibility of their business or brand during their upcoming event?

Compact and easy to transport making them ideal for exhibitions, trade shows, conferences, and any other event where you need to make a lasting impression. **Look no further than our extensive assortment of premium roller banners!**

BANNER DESIGN – we can take care of that too – our creative team can create custom designs that align with your clients' branding and message goals.

Call: 01483 474900 www.knaphillprint.com



- Lawn Care
- Tree Care
- Hedge Cutting
- Fencing
- Weeding
- Feeding
- Beds
- Borders
- Planting
- Regular Maintenance
- Logs for sale

Does your garden need the personal touch? Local gardener now working in your area available to assist with all your garden needs.

For all enquiries please contact Julie on: **01483 836490 / 07850 423585**

Fully Insured, References available.

THE IRON LADY



39, High Street, Woking, GU21 4UD

T: 07900 567000

E: kassie44@hotmail.com

TINY TREASURES

Baby and Toddler Group
Every Tuesday (term time)
9.30am to 11.00am

No group on
24th, 31st Dec and 7th January

In the St Andrew's Room
St Mary's Church, Horsell

Come and make friends,
enjoy play, craft,
and songs

Saint Mary the Virgin
Horsell




JESUS AND ME

Jesus and Me

A time for children aged 3+ to learn
and worship together during our
10am Sunday Services

Every Sunday except the first Sunday
of the month when we have All Age
Worship

There will be no 'JaM' over the
summer but there will be activities
for children during the 10am service

Term starts: 8th September, 2024

Saint Mary the Virgin
Horsell



FIRST SUNDAY WITH A MUSIC GROUP

An informal service
for all the family. Do join us!

FIRST SUNDAY
with a music group

First Sunday
of every month at 10am

1st December
5th January
2nd February

Saint Mary the Virgin
Horsell



NATIVITY SERVICES

Christmas Eve
St Mary's Church

4pm Nativity Service
especially for the younger members
of the family.

Come dressed
as a Nativity character!

6pm Nativity Service
for slightly older children, teenagers
and all the young at heart!

Saint Mary the Virgin
Horsell




Messy Church

4.00pm to 5.30pm

Saturday 21st December
Christmas Party
Sunday 19th January

Explore a Bible theme through
craft, food, games or nature.
There will be a short celebration
with a story, songs and prayers.

For all ages!
Picnic tea provided!

Messy Church is part of The Bible Reading Fellowship (BRF), a
Registered Charity.
brf.org.uk

Saint Mary the Virgin
Horsell




FRIDAY POP-IN COFFEE

8.45am until noon
(term time)

10am to 12 noon
(school holidays)

Why not drop in for a
cuppa, a piece of cake and
a chat once you have done
the school drop-off?

Saint Mary the Virgin
Horsell



NINE LESSONS AND CAROLS

15th December
6.30pm Sunday
All welcome. Do join us!

Saint Mary the Virgin
Horsell




STAY IN TOUCH

St Mary's Parish Office is open
Tuesday 9am to 4pm
Wednesday & Friday 9am to 1pm
Telephone: 01483 772134


Visit our website at
stmarys-horsell.org.uk



Follow us on Facebook
StMarysChurchHorsell

Email us:
stmaryshorsell@btinternet.com
childrenandfamiliesstmmarys@gmail.com

Our services are streamed via You Tube
@stmmaryshorsell

Saint Mary the Virgin
Horsell



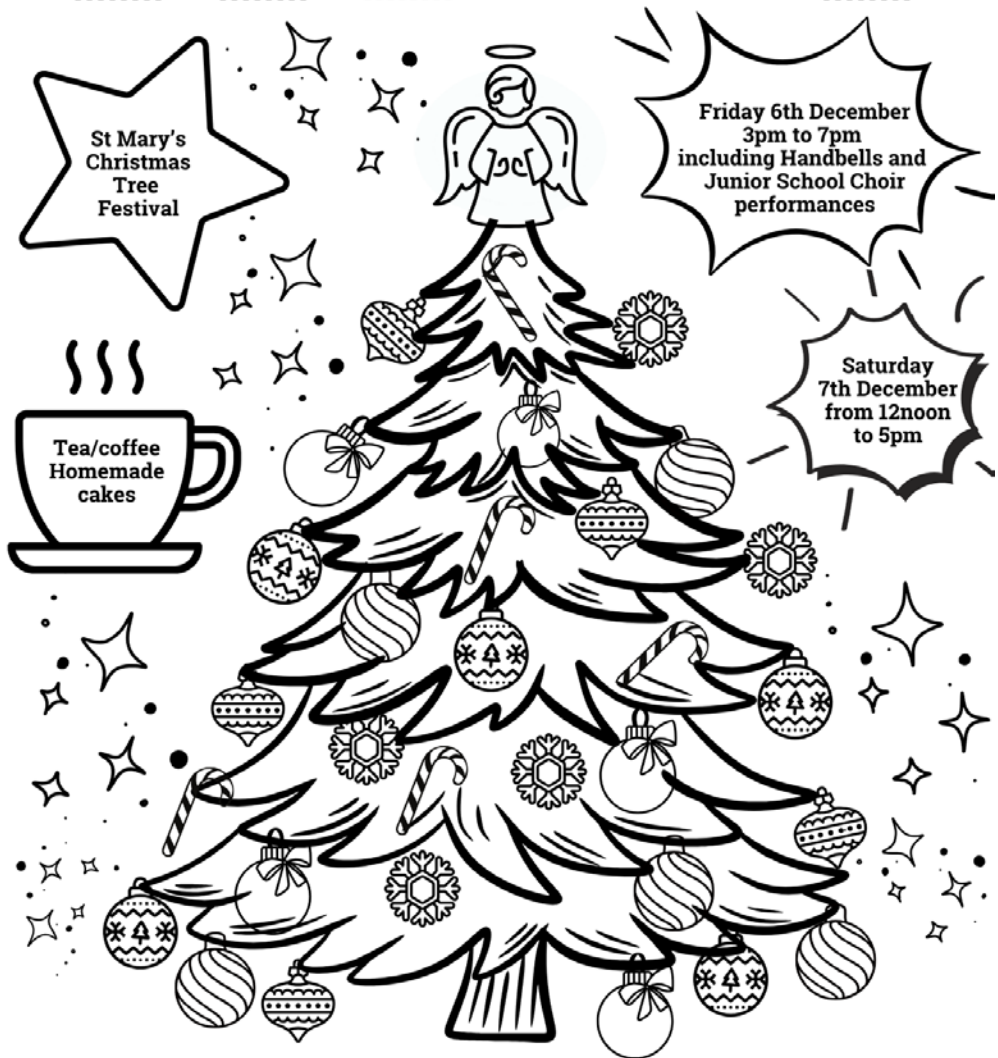




COLOUR AND COUNT CHRISTMAS TREE

Colour in the Christmas tree and decorations.
How many of each decoration can you count?
First one has been done for you. Answers are on page 24.



5



Horsell Remembers

Residents take time to pause and remember those that have died: on two recent occasions, our vicar Dmitry Lutsenko led services of remembrance as part of our service to the community.

The Annual Memorial Service* is dedicated to remembering with thanksgiving those from the Parish who have died in recent years, and deaths of loved ones who have a connection with Horsell's St Mary's Church (this could be a spouse or parent of someone within our congregation or a faithful parishioner, still fondly remembered). As the names of loved ones are read out (this year, around 70 names in total) as candles were lit individually, a period of silence followed for quiet reflection. The service included hymns and readings. For those attending it is an important part of processing grief, giving space for silent prayer,



Annual Memorial Service Candles



Horsell War Memorial



Horsell remembers the fallen from both World Wars

permission to shed tears, an opportunity to praise by singing and be in communion with others. A week later came the Armistice Remembrance Service** at the Horsell War Memorial. The High Street is closed. Hundreds of residents attend with their family, young and old, to participate. A contagious hush descends. The Horsell Scouts and Guides parade, and children from each age group proudly present and lower their group's flag. Wreaths are presented from community groups and left at the foot of the memorial. The names of those from the Parish who died in WWI and WWII were read out

by Ciaran Osgerby and Ashley Carter. Prayers are said. Silence is kept. David Manning played the last post. The dead are remembered so that their ultimate sacrifice is not forgotten.

This cross-generation, collegiate act is a sobering reminder of how fortunate we are to live in peaceful times while other lands remain at war and in extreme conflict over territory.

*3rd November 2024 **10th November 2024

Garden Matters

How to enjoy your garden in the hibernating months.

My garden sees less of me in December and January - I have to admit that I don't enjoy gardening in wintry weather. However, tidying can wait, and I console myself with the knowledge that insects and other little creatures need undisturbed shelter; withering perennials, clumps of grass and leaves are perfect hiding places whilst seedheads provide welcome food for birds.

Some seeds can be sown now, and Boxing Day is the traditional day to sow onion seeds. Started off in pots in a propagator, young onion plants can be planted out after hardening them off in spring. For chillies and aubergines, sowing indoors as early as January means you're more likely to get a good crop. Leftover brassica and loose-leaf salad seeds can be planted in containers now and grown on windowsills for 'cut and come again' micro greens.

Sweet peas can be sown under cover in December, ideally in containers such as cardboard tubes that can later be planted into the soil, minimising root disturbance.

Low light levels and high indoor temperatures can lead to weak seedlings, prone to 'damping off'. Risk can be minimized by thoroughly cleaning everything that will encounter



A carpet of cyclamen at RHS Wisley

seeds or seedlings and using good quality peat-free seed compost.

Jobs completed, a dry winter day will entice me to Wisley Gardens, beautiful all year round. December heralds mahonia blooms and winter-flowering viburnums. January brings forth carpets of hardy cyclamen, hellebores and early snowdrops and some narcissi start to flower. A sure sign that spring is just around the corner.

Elna Broe

While the oft-gifted poinsettia plant isn't considered toxic, it shouldn't be eaten, and large amounts may cause stomach upset to cats and dogs. Also, fibrous leaves may present a choking danger in young children and small pets. The plant exudes a milky sap, which may cause redness, swelling and itching in some people.



"Oh.... a lot of adverts...." If this is what you think upon opening our magazine, there's a reason. It is thanks to our advertisers we can keep the magazine in production. We are extremely grateful to them for their continued support.



Home Improvements

PVC • Aluminium • Timber
Windows • Doors • Roof Lanterns • Bi-Folds
Orangeries • Garden Rooms • Conservatories

01483 727 474 | sales@krbltd.com
109 High Street | Horsell | Surrey | GU21 4SY
76 High Street | Old Woking | Surrey | GU22 9LN



Where reputation matters



SURREY
TRADING
STANDARDS
APPROVED



HomePro
FENSA
APPROVED
WINDOW & DOOR INSTALLATIONS

PILATES YOGA

Mondays 10:30 & 18:30 Pilates

11.30 & 19.30 Yoga

Tuesdays 11:30 Pilates

Wednesdays 11:30 Yoga – Beginner

Thursdays 10:30 Pilates

11:30 Yoga

Fun and friendly environment for all abilities. Weekly classes based on sound physiotherapy practice. There is nothing like a live class where strangers have fun and become friends. **Discounts on block booking.**

www.yogabyshen.co.uk
[Email: yogabyshen@gmail.com](mailto:yogabyshen@gmail.com)

Corporate events and Life Coaching



Christmas Traybake Recipe

A quick and easy alternative to mince pies – Mincemeat Traybake.

- 200g self-raising flour
- 150g castor sugar
- 1½ tsp mixed spice or All-spice
- 3 eggs
- 250g mincemeat
- 150g melted butter

Combine all the ingredients into a large mixing bowl. Put the combined wet mix into a lined baking tray and bake at 180°C for about 30 minutes until firm (the skewer comes out clean). Once cool, cut into squares and decorate as you wish.



Christmas with Giles, Grandma and Family

Join TASM for a lecture by Barry Venning on **Thursday 12 December 2024 at 10.30 am**. Welcome Church, 1-5 Church Street West, Woking, GU21 6DJ.

For a great many members of The Arts Society Mayford (TASM), the cartoonist Carl Giles was as much a part of the festive season as the Christmas tree, crackers and the Queen's Speech. So popular were the Giles annuals as Christmas presents that they helped to make him Britain's best loved, most successful and wealthiest cartoonist. This talk by Barry Venning looks at Giles's life and

work with a particular emphasis on his seasonal cartoons, particularly those featuring Grandma and the Giles family. They include some of his funniest cartoons and Britain in winter. Guests are welcome, for a fee of £10 per lecture, but are asked to contact the membership secretary, Richard Brace, by emailing him in advance on richard.brace@icloud.com

INSPIRE KITCHENS LTD

Creating the heart of the home



Thanks to our wonderful customers we are celebrating 5 years in business... and to celebrate we are offering **EXCLUSIVE OFFERS** on all products until December 1st



Contact us for more information quoting 'HM24'

48 HIGH STREET,
KNAPHILL, WOKING,
SURREY, GU21 2PY
01483 472814
www.inspirekitchensuppliers.co.uk



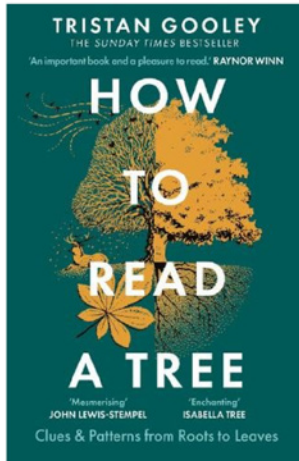
Book Review

How To Read A Tree is a guide to the hidden meaning of nature from the natural navigator, Tristan Gooley.

This book will hopefully be of interest to everyone who enjoys a walk through Horsell Common and other woodland areas. Tristan Gooley has written many books on closely related subjects, but it is recommended to start with this one to learn about what we see during a walk, particularly the trees. He writes with authority, and it's all based on his lifetime of study, his experiences, and his knowledge.

Gooley writes in a way that makes the learning process interesting to the extent that walks will take longer than before as your observation skills improve. This book is written in an uncomplicated style and the information is easy to absorb, it is full of tree facts that you have probably never even thought about before and will make you look at trees from a different perspective.

Each chapter covers a different but related subject. There are so many questions raised and answered including why a variety of tree is more prevalent in a particular area of the common, what triggers the leaves to fall, why branches grow more on one



side than the other and how to navigate naturally using the signals trees provide. You may already have an appreciation of the trees we regularly see but after reading a few chapters you will see more of the signs and observe more.

Each tree we see (including the leaves, bark, trunk shape, root patterns and branches) is filled with distinctive

signs that reveal secrets about the life of that tree and the terrain we stand in. The clues are easy to spot when you know what to look for whilst remaining invisible to others.

This book is packed with useful information and the best way to read it is in stages. Your country walks will never be quite the same again because you will know how to read a tree.

See www.naturalnavigator.com for more information and Tristan Gooley's other books. It is hoped that you will enjoy reading this book and increase your appreciation of what is around on Horsell Common.

Nick Duncan-Brown

Answer p.18:
5 of each
decoration

TFM FENCING

All Aspects of Fencing Landscaping & Gardening

BEFORE

AFTER

Services

- Fencing
- Gates
- Pergola's
- Landscaping
- Patios
- Decking
- Retain Walls
- Block Pavement
- Turfing & artificial grass

For Free Quotes & Estimates Call
Florin on 07503964675 |
tfmfencing@gmail.com

All Work Fully Guaranteed
and Insured

Based in Knaphill and Covering
all Surroundings Areas

www.tfmfencing.com

Jacksons Fencing APPROVED INSTALLER

Checkatrade Where reputation matters

Google Guaranteed

Facebook

TikTok

nextdoor

Instagram

Providing
trusted nursing
care, tailored
to you

NEW NURSING
SUITE NOW OPEN



Discover the peace of mind that comes with trusted nursing care tailored to your individual needs. Our dedicated team of nurses are committed to providing personalised care in a warm and supportive environment, ensuring your wellbeing and comfort every step of the way. Experience the difference at Horsell Lodge Care Home.

Call freephone **0808 223 5352** | Find us online **caringhomes.org**

Kettlewell Hill, Woking, Surrey, GU21 4JA
This rating is correct at time of print

BOOK A
VISIT TODAY



Horsell Lodge
CARING HOMES



**TRIDENT HONDA PROUDLY PRESENTS
THE LATEST HONDA SUV RANGE**



Honda e:Ny1 - e:BEV



Honda HR-V e:HEV



Honda ZR-V e:HEV



Honda CR-V e:PHEV

COME IN AND VIEW THE LATEST HONDA RANGE OF VEHICLES

- Family business established in 1963, celebrating 60 years of quality service
- Full sales, service & parts facilities including bodyshop repairs
- All makes servicing, MOTs, Tyres, While-U-Wait servicing
- Honda Service Price Match Promise
- 24 hour Filling Station & Convenience store



Trident Honda
Guildford Road
Ottershaw
Surrey, KT16 0NZ

01932 874411
ottershaw@tridenthonda.co.uk
www.tridenthonda.co.uk





BOOKKEEPING AND PAYROLL EXPERTS

- **Bookkeeping** – day to day entry, VAT returns, management accounts, reconciliations
- **Payroll** – weekly and monthly processing, starters, leavers, RTI, P60s
- **Auto Enrolment**

We want to take away the headache of bookkeeping and payroll so you can concentrate on the more important aspects of running your business.

Please contact us for a free consultation to discuss how we can help support your business.

Tel: 01483 755311

Email: mail@pabsco.co.uk

Web: www.pabsco.co.uk

Sundial House, High Street, Horsell, Woking, Surrey, GU21 4SU

SURREY • BERKSHIRE • HAMPSHIRE • LONDON

pabsco
PAYROLL & BOOKKEEPING SUPPORT

FRÄZERS SURVEYORS

Your Local Chartered Surveyors

RICS HomeBuyer Reports

Building Surveys

Valuations

All Types Of Buildings

Over 30 Years Experience

Call Or Visit Us Today For A Competitive Quote

Frazers Surveyors Ltd
Thornash House, 37 High St, Horsell, GU21 4UR
T: 01483 730909 E: surveying@frazers.co.uk
www.frazers.co.uk



CONVEYANCING AND PROBATE PRACTITIONERS

We offer the below services to our clients, conducted in a friendly, professional, supportive manner. We are excellent communicators using both technology and traditional standards of service to suit our clients.

- PROPERTY LAW SPECIALISTS
- SELLING AND/OR BUYING A PROPERTY
- REMORTGAGES • TRANSFERS • PROBATE
- WILLS • DECLARATION OF TRUSTS
- LASTING POWERS OF ATTORNEY
- COMMISSIONERS FOR OATHS

Please telephone or email for a free estimate or for further information.

Business Hours: 9am to 5.30pm Monday to Friday
Free Parking

T: 01483 485700 F: 01483 485701

E: info@lyonsandcompany.co.uk

6 Anchor Crescent, Knaphill, Woking, Surrey GU21 2PD

Woking Funeral Service



Proudly serving your local community since 1880

Woking Funeral Service are here to support and guide you. We offer a friendly, professional service to families.

Horsell

01483 355 752

78 High Street
GU21 4SZ

Call or visit our team in branch. Rachel Chambers and Debby Loughman are on hand to offer their experience and local knowledge to support you with all your bereavement needs.

- 24-hour service
- Bereavement advice
- Transparent pricing
- Private chapel of rest
- Floral tributes
- Memorial masonry
- Home visits
- Prepaid funeral plans
- International repatriation

We are here to help 24 hours a day.

www.wokingfunerals.co.uk





HALSTEAD St ANDREW'S SCHOOL

A PARTNERSHIP TO FORM THE SCHOOL OF THE FUTURE FOR WOKING

An independent co-educational school for ages 2-16

You are warmly invited to join us at our next open morning. Please visit our website to book your place: www.hsaschool.co.uk/open-days

ELECTRICIAN/HOME MAINTENANCE



Sockets, lights to full re-wires. Painting, tiling, and plaster repairs etc.

No job too small. Reliable.

Tim Dear
01483 762967
or 07973 777332

PENNY & HAYTER OPTICIANS

- Independent Opticians
- Personalized service
- Warm & friendly approach
- Highest standards of eyecare
- Latest equipment
- A wide selection of frames, glasses lenses and contact lenses



To start your eye care journey, call Penny & Hayter Opticians on 01483 475205, or visit: www.pennyandhayter.co.uk

3 Albion Parade, High Street, Knaphill Woking, Surrey, GU21 2PS
info@pennyandhayter.co.uk

Violin Teaching

Grading exams / conservatoire entrance. DBS checked and ISM registered

Graduate: Royal College of Music and University of Oxford

- Based in Woking
- Experience with all ages
- Face-to-face and Zoom
- Double vaccinated



CONTACT

Emmanuel Bach: 07903 582483
Emmanuel.F.Bach@gmail.com



Motormech



Vehicle Service & Repairs to all leading makes

FREE BRAKE AND BATTERY CHECK**

MOT TEST £39.00

COMPLETE SERVICE*
£179.00
INC. VAT

STANDARD SERVICE*
£99.00
INC. VAT

COMPLETE SERVICE & MOT*
£199.00
INC. VAT

STANDARD SERVICE & MOT*
£119.00
INC. VAT

Our Service Team will be happy to provide you a quotation and make a booking. You can also book online. All makes and models.

* Terms & Conditions apply. We will report to you if the spark plugs require changing.

* We'll collect and deliver your vehicle **Free of charge** within a 5 mile radius of GU2 7YB. The Complete and Standard service offer includes all makes and models up to engine size 2000cc. Additional surcharges will apply for larger engine sizes.

** Free Brake and Battery Check with Complete Service and Complete Service with MOT

BOOK ONLINE: www.motormechguildford.co.uk
OR CALL: 01483 502671

Unit 1H, Cathedral Hill Industrial Estate,
Guildford, Surrey GU2 7YB



WHY SHOULD YOU CHOOSE SEYMOURS?



Partner Owned & Run

Because we're Partner run, the owner of the business will be personally involved in your sale.



20 Seymours Offices

All the care and attention of a local independent with the vast selling power of our network.



Knowledgeable Local Staff

Our staff live nearby to offer unrivalled local knowledge and expertise when you move.



Unrivalled Marketing

Attract the best buyers with high quality marketing photos, videos, brochures and social media.



National & London Buyers

Get exclusive access to buyers from 800 Guild member agents across the UK and London.



Property Finder Services

Sell with Seymours and we'll prioritise your search to find your dream home.



Supporter of Local Charities

Enjoy peace of mind working with an agent that supports local schools and charities.



No.1 In Surrey

We're proud to help more people move in our local community than any of our competitors.

If you're thinking of selling, please call us for a **free market appraisal of your property.**



Lloyd Moss
Partner



James Taylor
Partner

Seymours Horsell

01483 755222 | sales@seymours-horsell.co.uk



Seymours

Printed by Knaphill Print Co. Ltd. Tel: 01483 474900