

Horsell Matters



The Village Magazine from your Parish Church
December 2023 – January 2024

Horsell Directory

St Mary's Church	www.stmarys-horsell.org.uk	
	Baptisms, Weddings or Funerals	772134
Parish Office open	Helen Gravette Tues 9am-4pm, Wed & Fri 9am-1.00pm stmaryshorsell@btinternet.com	772134
Vicar	Revd Dmitry Lutsenko vicar@stmarys-horsell.org.uk	755618
Children & Families' Worker	Rebecca Connolly childrenandfamiliesstmarys@gmail.com	772134
Church Wardens	Brian Sheriff 474975 Mark McMurtrie 07815 635609	
Treasurer	David Leach	823439
Cathedral Link	Gill Saville	773799
Pastoral Assistants	Margaret Johnson 762481 Hilary Mitchell 715459 Coral Colclough 747481	
JAM (Jesus and Me)	Rebecca Connolly (3+) 10am most Sundays	772134
Tiny Treasures	Rebecca Connolly, St Andrew's Room Tues 9.30am to 11.30am, term time	832943
Twinkle Tots	Rebecca Connolly, St Andrew's Room Thurs 9.30am to 11.30am, term time	772134
Bell-ringers and Servers	Alan Nichols [occasional] Tues. evening practice	767852
Trinity Methodist Church	office@trinitywoking.org.uk	730754
Horsell Evangelical Church	Revd Andrew Bents	822259
To Book the Village Hall	Paul Bowyer	764047
Parish Institute	www.horsell-parish-institute.org.uk	772134
Horsell Village School	Infants Head Teacher – Mrs J Reeve	714804
Horsell C of E School	Junior Head Teacher – Mrs C Wand	761531
Woking High School	Head Teacher – Mrs M Walter	888447
Halstead St Andrew's School	Headmaster – Mr D Fitzgerald	760943
Horsell Care	Helpline	07552 553414
Residents Association	Alan Taylor ajrolyat@gmail.com	
Scouts, Beavers, Cubs	Ali Stubbs gsl@horsellscouts.org.uk	07734 424568
Explorer Scouts (14-18 Yrs)	Roy Thompson explorers@woking.scouts.host	
Guides & Brownies	www.girlguiding.org.uk/information-for-parents	
WI Horsell Afternoon	Alison Evans-Wyatt amevans705@gmail.com Meets on 1st Thursday at 1.45pm in the Village Hall	765570
WI Horsell Evening	Mrs Joan Cox Meets on 4th Tuesday at 8.00pm in the Village Hall	760783
Woking Police Station	dial 101 from mobile or landline	

Christmas

When we start preparing for Christmas most people think of family, presents, parties and food. For Christians, the joy of celebrating the birth of Jesus comes top of the list.

Watching the news there is not much joy right now. This year people around the world have suffered and are still suffering. It's heartbreaking to see so many losing their lives in wars and natural disasters. Buying gifts this year will be difficult for many, because of the cost-of-living crisis.



Christmas time reminds us to appreciate the gift of life and time with our families. Life is a gift, so very precious.

The birth of Jesus is the biggest gift of all! Celebration of his birth, his life, his love for us is a gift that is over two thousand years old and never expires, it never loses its value. It is as precious today as it was all those years ago.

This Christmas time at St Mary's we will have various church services to suit everyone's taste.

Sunday 17th Dec at 6.30pm – 9 Lessons and Carols – a traditional candlelit service with readings and Christmas carols led by the organ and the choir.

Sunday 24th Dec at 8am – Communion service – a spoken communion service.

Sunday 24th Dec at 4pm and 6pm – Christmas Eve Christingle services – 2 family services that take us through the Nativity story, full of fun and carols, with Christingles given at the end. Come dressed as a Nativity character if you wish!

Sunday 24th Dec at 11.30pm – Midnight Mass – a traditional midnight communion service.

Monday 25th Dec at 10am – Christmas Day Family Communion service – a fun-filled family service with communion.

Come and join us to celebrate the birth of Christ! You will be most welcome.

Revd Dmitry Lutsenko

ST MARY'S CHURCH REGISTERS

Burials and Cremations

We offer our sympathy to the families and friends of those who have died:

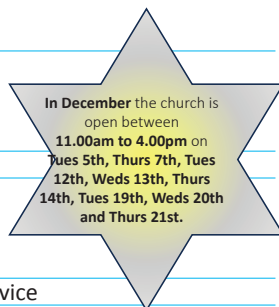
Anne Duggan Patricia Guild

Baptism and Thanksgiving

We welcome into the family of the church: Austin Wheeler

ST MARY'S CHURCH DIARY **DECEMBER 2023**

Fri 1st	8.45am-12noon	Pop in Coffee
Sat 2nd	7.00pm	Mosaic Choir
Sun 3rd	8.00am 10.00am	Holy Communion (CW) All Age Morning Worship
Tues 5th	9.30am-11.00am 9.30am 2.00pm 5.00pm	Tiny Treasures Baby & Toddler Group Village School Nativity (Year 1) Service at Kettlewell House Village School Nativity (Year 1)
Wed 6th	9.30am 11.00am 5.00pm 8.00pm	Village School Nativity (Year 2) Mid-Week Holy Communion Village School Nativity (Year 2) Engine Room House of Prayer
Thurs 7th	9.30am-11.00am 9.30am 5.00pm 7.30pm	Twinkle Tots Village School Nativity (Year 3) Village School Nativity (Year 3) Choir Rehearsal
Fri 8th	08.50am-12noon	Pop In Coffee
Sun 10th	8.00am 10.00am 3.30pm-5.30pm 6.30pm	Holy Communion (BCP) Parish Communion Christmas Messy Church Party Contemplative Meditation
Mon 11th	6.00pm	Horsell's Three Schools' Carol Service
Tues 12th	9.30am-11.00am 9.30am 2.30pm 6.00pm	Tiny Treasures Baby & Toddler Group Junior School Nativity Halstead St. Andrew's Nine Lessons & Carols (Years 2-4) Halstead St. Andrew's Nine Lessons & Carols (Years 5-8)
Thurs 14th	9.30am-11.00am 6.00pm 7.30pm	Twinkle Tots Junior School Nativity Choir Rehearsal
Fri 15th	08.50am-12noon	Pop In Coffee
Sat 16th	7.00pm	Horsell Community Choir
Sun 17th	8.00am 10.00am 6.30pm	Holy Communion (CW) Parish Communion Nine Lessons & Carols
Tues 19th	9.30am-11.00am	NO Tiny Treasures Baby & Toddler Group
Thurs 21st	11.00am-1.00pm	NO Twinkle Tots
Fri 22nd	10.00am-12noon	Pop In Coffee
Sun 24th	8.00am 4.00pm 6.00pm 11.30pm	Holy Communion (BCP) Christingle Service for the young Christingle Service for all the young at heart Midnight Holy Communion
Mon 25th	10.00am	Christmas Day Family Communion
Tues 26th	9.30am-11.00am	NO Tiny Treasures Baby & Toddler Group
Thurs 28th	11.00am-1.00pm	NO Twinkle Tots
Fri 29th	10.00am-12noon	Pop In Coffee
Sun 31st	8.00am 10.00am	Holy Communion (BCP) Parish Communion



ST MARY'S CHURCH DIARY **JANUARY 2024**

Tues 2nd	9.30am-11.00am 2.00pm	NO Tiny Treasures Baby & Toddler Group Service at Kettlewell House
Wed 3rd	11.00am 8.00pm	Mid-Week Holy Communion Engine Room House of Prayer
Thurs 4th	9.30am-11.00am	Twinkle Tots
Fri 5th	8.45am-12noon	Pop In Coffee
Sun 7th	8.00am 10.00am	Holy Communion Service (CW) All Age Morning Worship
Tues 9th	9.30am-11.00am	Tiny Treasures Baby & Toddler Group
Thurs 11th	9.30am-11.00am	Twinkle Tots
Fri 12th	8.45am-12noon	Pop In Coffee
Sun 14th	8.00am 10.00am 6.30pm	Holy Communion Service (BCP) Parish Communion Contemplative Meditation
Tues 16th	9.30am-11.00am	Tiny Treasures Baby & Toddler Group
Thurs 18th	9.30am-11.00am	Twinkle Tots
Fri 19th	8.45am-12noon	Pop In Coffee
Sun 21st	8.00am 10.00am 4.00pm	Holy Communion (CW) Parish Communion Messy Church
Tues 23rd	9.30am-11.00am	Tiny Treasures Baby & Toddler Group
Thurs 25th	9.30am-11.00am	Twinkle Tots
Fri 26th	8.45am-12noon	Pop In Coffee
Sun 28th	8.00am 10.00am 12.15pm 6.30pm	Holy Communion (BCP) Parish Communion On Your Own Lunch Peaceful Prayer & Praise
Tues 30th	9.30am-11.00am	Tiny Treasures Baby & Toddler Group

FROM TUESDAY 2ND JANUARY THE CHURCH BUILDING WILL BE OPEN:

Tuesdays, Wednesdays, and Thursdays from **9am** to **3pm**

Fridays from **12 noon** to **3pm**

Sundays from **8am** to **3pm**

ST MARY'S CHURCH DIARY **FEBRUARY 2024**

Thurs 1st	9.30am-11.00am	Twinkle Tots
Fri 2nd	8.45am-12noon	Pop in Coffee
Sun 4th	8.00am 10.00am	Holy Communion (CW) All Age Morning Worship



St Mary's Church, Horsell: @StMarysChurchHorsell

CW means Common Worship. **BCP** means Book of Common Prayer.
All correct at the time of going to print.

For further details please look at our website: www.stmarys-horsell.org.uk

Getting to Know

Rebecca Connolly, the Children and Families' Worker (CFW) at St Mary's in Horsell.

Background: Rebecca comes from a family where faith has been front and centre of her life. Her dad is a vicar, as are her two uncles and both of her granddads were. For many years she helped her parents run the church holiday club. For a year before working at St Mary's Rebecca was a Children's Ministry Assistant and Youth intern at Christ Church, Woking and she continues to volunteer with Engage at Horsell CofE Junior School. She's had several jobs in retail, including a coaching role at John Lewis. Rebecca is married to James, a structural engineer. They live in Woking.

Why St Mary's in Horsell: In the spring Rebecca was en route to the Junior School to do an Engage session when she saw the CFW advert on the church notice board. Then, a colleague at Christ Church told her about the job which encouraged her to apply. The role attracted her because of the church's links with Horsell Schools and the welcome she received when meeting various members of the congregation with whom she would be interacting. She felt God was leading her toward the role.

What's available* for children: JAM for 3+, Tiny Treasures, Twinkle Tots, All Age Worship, Messy Church and Open the Book. Rebecca's experience in retail and coaching role at John Lewis helps her to work with the many volunteers who assist her in the various children's activities currently available.



Rebecca and James Connolly

Rebecca said: "Children inspire me with their creativity and their imaginations. In faith we are encouraged to be like children. Children's faith is simple. They have a sense of awe and wonder. I find children genuine. I want to support families bringing their children up in faith".

How can children benefit from a Christian understanding and faith:

Rebecca said: "Each of us is made in God's image and I believe it is important that every child knows this and that they are loved by God. Science can answer the how but not why we exist. We were made for God's pleasure. We're here to be loved and to have a relationship with God; to be caretakers of his world and to love others. I want to help children know Jesus better and share Jesus' love in our world and community".

One of the themes Rebecca has started with the 'Twinkle Tots' on Thursdays is how God has made our amazing bodies. A different part of the body is looked at each week using craft activities, rhyme, songs, and a prayer. In 'Tiny Treasures' on Tuesdays Rebecca uses non-Biblical

stories and craft activities. For Messy Church the team follows the Bible Reading Fellowship curriculum. Rebecca added: "I couldn't do [Messy Church] without the help of Jenny Spencer, Anne-Marie Claxon, Mike Couper and all the other volunteers."

Rebecca is extending her learning by attending a Guildford Diocese study course called the First Timers Scheme which includes theology, planning sessions and safeguarding.

You can **contact Rebecca** on 07459 069880 or via the Parish Office 01483 772134 or by email childrenandfamiliesstmarys@gmail.com

**See the centre pages for details of most of these activities*

YOGA / PILATES

All classes are weekly and one hour's duration throughout the year

**Mondays 10:30 & 18:30 Pilates
11:30 & 19:30 Yoga**

**Tuesdays 11:30 Pilates
Thursdays 10:00 Pilates**

11:00 & 19:00 Yoga

Horsell Village Hall, Woking GU21 4SS – free parking

Email: yogabyshen@gmail.com

Shen's Yoga and Pilates classes are held in a friendly relaxed environment for all abilities as alternatives are given. Regular practice will help you tone up, lengthen and strengthen your muscles. Improve your immune system to lead the life you deserve.

There is nothing like a live class where strangers become friends!
PLEASE EMAIL ME FIRST – TURN UP EARLY TO ANY CLASS

St Mary's Maintenance Matters

An update relating to the Tower Clock and Churchyard Wall.

The mechanism of a Church Tower Clock consists of flimsy components which require delicate adjustments, coupled with a massive iron frame, very heavy weights and long lengths of chain; in our case it is all 150 years old and has not worked for many years. This was the task facing Gillett and Johnston, who originally installed the clock in 1873. Thankfully, after numerous visits, replacement of worn-out bushes, and many fine adjustments, the clock started to tick in mid-October. The process of careful adjust began, to ensure it kept good time and allowed the chimes to reconnect. We are hopeful for a full restart before Christmas. We remain very grateful to all the people of Horsell who helped fund the restoration.

The south wall of our Churchyard, which is also the southern boundary of the Horsell conservation area, developed a lean many years ago, and despite buttresses being built in the 1960s, the lean increased to the point where it became a hazard. This

necessitated a complex demolition and rebuilding project, using reclaimed bricks and historic building methods with lime mortar, project managed by Tim Jordan, a building pathologist, from our congregation. After many hours of voluntary labour and the assistance of a professional bricklayer specialised in complex historic structures, the wall was also completed in mid-October, enabling the removal of the protective covering which had to be placed over the many monuments in this area. We are now looking forward to reseeded and a return to the normal tranquillity of God's Acre.

Brian Sheriff, Church Warden



Brian Sheriff



Tim Jordan



The happiest people are those who are too busy to notice whether they are or not. (William Feather)

Horsell Matters: We need someone, or two people, to deliver Horsell Matters to Russell Road & Russell Close. Please call Helen 772134 if you can help.

HALSTEAD ST ANDREW'S SCHOOL

A PARTNERSHIP TO FORM
THE SCHOOL OF THE FUTURE FOR WOKING

An independent co-educational school for ages 2-16

To find out more or to book a visit, go to our website:
www.hsaschool.co.uk

RESTORE OFFICIAL
A CLEANER ALTERNATIVE

SUPERIOR CARPET & UPHOLSTERY CLEANING

FREE CALL OUT QUOTATIONS

Call: Harry James: 07852 565644
Email: restore@restoreofficial.com
Web: www.restoreofficial.com

Looking for a new *rewarding* career in care?



We're hiring locally now!

- Great rates of pay and benefits
- Ongoing training & development
- Mileage allowance
- Employee assistance programme
- Supported by a local expert team

We are recruiting all over Guildford and Woking plus all surrounding villages.

Outstanding *Service*. Professional Office Team.
Outstanding CQC Rating.

Call us on 01483 488222 or apply:
www.homeinstead.co.uk/guildford-woking



Grave Matters

The grave of Frank Robert Cocks and his first wife, Williamina, is marked by a large Celtic cross by the hedge on the east side of the vicarage.

Frank was born in Kensington in 1857, attended Jesus College, Cambridge and was ordained soon after graduation in 1882, after a first curacy in Suffolk he moved to a curacy in Guildford before returning in 1890 to East Anglia as vicar in a Huntingdonshire parish and then New Buckenham, Norfolk. He married Williamina Anderson in 1885 and they had seven children. About 1910 he took early retirement and came to live at 'Ringrone', in Guildford Road, Woking, with his numerous family. In the 1911 census four of the children but not their parents were at 'Ringrone' along with Grace Barton, a governess who was also with them in 1901. The reason that a vicar with a family could retire at 54 to a large house, but the answer is in his inheritance. The Cocks wealth was built on a prosperous London music publishing business established in 1827 by Robert Cocks. In 1868 Robert took his two sons, Arthur and Stroud, into partnership with him. In 1896 Stroud, the father of Frank, sold the business to Augener, dying in 1907 worth £464,522. Frank thus shared with his kinsfolk a considerable fortune. By 1913 Frank and his family had moved

to a house in Ridgeway, probably built for him, and took on the role of honorary curate of Horsell for many years. Between the wars he often hosted the annual church fete in his ample garden.

World War I saw tragedy when a son Percy Frank Anderson Cocks, a Lieutenant in the Queen's Regiment, died of typhoid aged 19 en route between Basra and Bombay (Mumbai). In his memory Frank had the baptistry, now the prayer room, in Horsell Church built. Frank's wife died in 1931 and is the chief name on the family grave. But in 1934 Frank remarried, to Grace Barton, and the couple remained together with some of Frank's now adult children until his death aged 93 in 1950.

Richard and Rosemary Christophers



A large Celtic cross marks the Cocks' grave



The baptistry, now a time-out room, was built in memory of Percy Cocks who died aged 19

Horsell Matters: Next Edition February /March 2024

Copy to be sent by 3rd January by email please to: stmaryshorsell@btinternet.com

Advertising: please contact Sales at Knaphill Print, Tel: 01483 474900 or email: sales@knaphillprint.com

The Horsell Matters team extend their grateful thanks to **Knaphill Print Co Ltd** for producing this not-for-profit Parish magazine.

The views expressed by contributors to the magazine are not necessarily those of the PCC of St. Mary's Church. All advertisements are accepted in good faith.

Sophie Sews

CURTAINS | BLINDS | INTERIORS



Refresh your outdoor space sustainably - reupholster your seating and cushions with Sophie Sews. Choose from a variety of fabrics for a new look that will last for years

CONTACT

01483 598056

76 High Street, Horsell, Surrey, GU21 4SZ

www.sophiesews.com

60 Years in Horsell



Horsell Afternoon WI celebrated their 60th birthday meeting at the beginning of October with entertainment provided by Steve Poole with his guitar, singing songs of the 60's.

Special guests were members who had been at the first meeting in the cricket pavilion on Horsell Moor, everyone delighted to catch up with their news over all those years.

Horsell Evening Women's Institute started in 1963 when more women began to work outside the home and were not able to join the original Horsell WI.

As time went by it became inconvenient to meet in the evening and it was decided that the group change to meeting in the afternoon, so continued as Horsell Afternoon WI.

Although there have been many changes it remains that the WI in Horsell is part of the largest voluntary organisation for women in the UK – the Surrey Federation has more than 8000 members.

New members are always welcomed to this friendly group who meet on the **first Thursday of each month in Horsell Village Hall from 1.45pm to 4pm.**

For more information email: horsellafternoonwi@gmail.com

Churchyard Cat

A busy season ahead as we enter Advent in preparation for Christmas and then Epiphany. I'm sure to poke my whiskers thru' the church door and get a glimpse of all the services: Nine lessons and Carols, Christingles, Midnight Communion and Christmas Day Service. Also, the Schools' Nativity Services, with chattering young people marching through my churchyard. I try to sneak in to watch. The new lighting in Church is a big improvement and shows off my ginger fur to good effect.

So, what sort of winter will we have? On



a recent patrol I noticed white cyclamen in bloom, which only happens when it starts to get cold, and many red berries on my holly trees – it's said to be sign of a cold hard winter. Whatever the weather, have a very Happy Christmas. Why not drop me a message for the New Year at stmaryschurchyardcat@gmail.com



Thank you to everyone who came to support the Macmillan Coffee Morning at St Mary's on 29 September. With the raffle, which was kindly supported by several local businesses, we raised £574.60 - a brilliant total. Gill Walsh



SALE NOW ON!

at your local independent retailer

Price Match Guarantee | Super Service | Expert Knowledge | Contact-Free Delivery



Built-in Single Oven

HHF113BR0B

- 66 litres (net) multifunction fan oven
- 3D hotair cooking
- Integral grill, programmable timer
- H59.9 x W59.4 x D54.8cm

Only **£269.00**

2 Year Warranty
A Energy Rating



Gas Hob

PGP6B5B90

- 4 Cooking elements
- Ergonomic control knobs
- 2 x 1.75kw, 3kw, 1kw
- H4.5 x W58.2 x D52cm

Only **£299.00**

2 Year Warranty



12 Place Integrated Dishwasher

SMV2ITX18G

- Five programmes including Eco
- Cutlery basket
- Delay start
- H81.5 x W59.8 x D55cm

Only **£449.00**

2 Year Warranty
E Energy Rating



Ceramic Electric Hob

PKE611CA3E

- 4 zones
- Dial controls, power boost
- Quick start, residual heat indicator
- H4.6 x W59.2 x D52.2cm

Only **£249.00**

2 Year Warranty



YOUR LOCAL DOMESTIC APPLIANCE SUPERSTORE
1-2 Albion Parade, High Street, Knaphill, GU21 2PS
Also in Guildford, Ashted, Bookham and Epsom Downs
01483 475000 • www.rsm domesticappliances.com

Terms and Conditions apply. Sold as an agent of Euronics Limited. All rights reserved. All offers are subject to availability while stocks last. Delivery and installation charges may apply. Exclusions and radius apply. See in store for full details. Images for illustration purposes only. Copyright Euronics 2023. E&OE 2023. Savings compared to a higher price charged for seven days. Savings on selected models only.

All Age Worship (AAW)

On the first Sunday of every month, at 10am we hold a relaxed, lively, all age service, aimed at making stories from the Bible and the word of God as accessible as possible, lasting about 45 minutes.



The AAW team starts things off with a song, often a lively one with actions to allow the children to move, sit or stand at the front if they want and to wake up mums, dads, grandparents, and everyone else, before introducing the theme of the service. It's ok to move and make a noise – children can wander down an aisle or sit near the front (and their responsible adult can join them too). This service does not include holy communion and is accessible and informal.

Every service will have a theme. It will most likely follow the prescribed lectionary Bible verses. Don't be put off. Rather than a straight reading of the text in old fashioned language plus a long sermon, the subject is revealed by an ice-breaker session, and an acted-out Bible reading, using simple language.

Whilst some of the regular congregation, who prefer communion services, do not attend the AAW, those that do set a fantastic example to the children who learn from them, namely that:

- its ok to have fun in church,
- singing worship songs is joyful,
- keeping it simple helps all of us, no matter our age,
- coming to church is for everyone – it's not an exclusive club for the older generation.

We always have a short period of reflection, confession and prayers and often get the children, and any adults who want to, involved by giving something out during the service. Past items have included sticky labels, coloured feathers, paper hats, battery operated candles and occasionally, chocolate! If you've not tried an AAW, give it a go – it's only once a month and you will be most welcome.

All Age Worship team



Start children off on the way they should go, and even when they are old, they will not turn from it. (Proverbs 22:6)

YOGA CLASSES IN HORSELL VILLAGE



Enhance your wellbeing and focus on you by joining SJ on the mat.

Beginners

4 week introduction course
In a small group aimed at those
with little or no experience.

Intermediate

Fun, relaxed, energising weekly
classes teaching classical yoga poses
to those who are not new to yoga.



Starts Sunday 14th January 2024 5.30pm Beginners, 6.45pm for all others
Horsell Scouts and Guides HQ, Horsell High Street.

Contact: Sara Jane directly on 07771816177 or Direct Message on Instagram @SJyoga2023

Horsell Sings! Christmas Concert

Saturday 16th December 7.30pm
St Mary's Church, Church Hill, Horsell, GU21 4QQ

Anna Tabbush with Camilo Menjura (guitar and vocals) and
Rachel Drayson (cello)

Interval

Horsell Sings! conducted by Anna Tabbush
Audience Carol Singing

Tickets £12.50

Profits will be donated to a local charity.

ALL AGE WORSHIP

Lively songs,
thought-provoking
Bible stories,
fun and family fellowship at 10am



First Sunday
of every month

3rd December
7th January
4th February

Saint Mary the Virgin
Horsell

JESUS AND ME



Jesus and Me

A time for children aged 3+ to learn
and worship together during our
10am Sunday Services

Every Sunday except the first
Sunday of the month when we have
All Age Worship

Saint Mary the Virgin
Horsell

TINY TREASURES

Baby and Toddler Group
Every Tuesday (term time)
9.30am to 11.00am

In the St Andrew's Room
St Mary's Church, Horsell

Come and make friends,
enjoy play, craft,
and songs



Saint Mary the Virgin
Horsell



Baby and Toddler Group
Every Thursday (term time)
9.30am to 11.00am

In the St Andrew's Room
St Mary's Church, Horsell

Come and make friends,
enjoy play, craft,
Bible stories and songs



Saint Mary the Virgin
Horsell



4.00pm to 5.30pm



December 10th
Christmas Party!

January 21st
February 18th

Fun activities for all ages!
Please bring your own
picnic tea

Saint Mary the Virgin
Horsell

FRIDAY POP-IN COFFEE

8.45am until noon
(term time)



10am to 12 noon
(school holidays)

Why not drop in for a
cuppa, a piece of cake and
a chat once you have done
the school drop-off?

Saint Mary the Virgin
Horsell

NINE LESSONS AND CAROLS

6.30pm Sunday 17th October
All welcome. Do join us



Saint Mary the Virgin
Horsell

CHRISTINGLE SERVICES



Christmas Eve
St Mary's Church

Come dressed as a nativity
character!

4pm Nativity and Christingle Service
especially for the younger members
of the family.

6pm Candlelit Christingle
and Family Carol Service
for slightly older children, teenagers
and all the young at heart!



Saint Mary the Virgin
Horsell



COLOUR THE NATIVITY SCENE

Did you know that word 'nativity' means 'birth'?

Every year on 25th December we celebrate a very special birth - the birth of Jesus. You can read all about it in the Bible in the Gospel of Luke chapter 2.

On Sunday December the 24th we are having 2 Christingle services at St Mary's at 4pm and at 6pm. These will be family services filled with joy for the birth of Jesus! All are invited to come dressed up as Nativity characters, children and adults too! Which nativity character will you come dressed up as?

Colour in the nativity scene. Can you name all the characters?
Which character would you like to dress up as?



Did you know that there are 4 Gospel books in the Bible - Matthew, Mark, Luke and John? Can you find the story of Jesus' birth in all 4 of them?

We look forward to seeing you and your family at one of St Mary's Christingle services on Sunday 24th December. Let's celebrate the birth of Jesus together!

Nativity Word Search

S	A	V	I	O	U	R	Z	W	O	N	D	E	R	X	O	W
U	R	E	H	T	O	M	H	L	O	U	J	H	T	I	A	F
S	M	Y	Y	R	H	A	C	H	E	R	O	D	Y	S	R	R
E	M	P	E	R	O	R	A	U	G	U	S	T	U	S	B	A
J	Y	G	L	O	R	Y	N	G	I	E	E	H	T	E	D	N
Y	E	R	O	V	I	R	G	I	N	A	P	P	I	V	Y	K
B	T	W	O	L	G	E	E	F	N	R	H	S	E	P	T	I
A	E	N	S	L	D	I	L	T	S	T	J	N	M	O	O	N
B	X	T	E	O	G	G	G	H	E	H	T	S	I	R	H	C
Z	A	B	H	V	A	N	A	A	Y	N	A	H	P	I	P	E
R	S	O	G	L	D	J	B	I	R	T	H	N	I	C	K	N
S	T	A	B	L	E	A	R	S	H	E	P	H	E	R	D	S
P	R	I	N	C	E	H	I	S	O	N	O	F	G	O	D	E
P	O	F	P	E	A	C	E	E	W	O	R	S	H	I	P	S
I	M	M	A	N	U	E	L	M	E	L	A	S	U	R	E	J
T	S	A	E	N	E	M	E	S	I	W	E	E	R	H	T	U



Find the Nativity themed words: up, down across, backwards, diagonal left and right. And which two words are odd ones out (because they do not feature in the advent story)? Answer on p.19.

- | | |
|------------------|----------------|
| Advent | Joseph |
| Angel Gabriel | Mary |
| Baby Jesus | Messiah |
| Bethlehem | Moon |
| Birth | Mother |
| Bethlehem | Myrrh |
| Christ | Peace |
| Earth | Prince |
| East | Reign |
| Emperor Augustus | Saviour |
| Epiphany | Shepherds |
| Faith | Son of God |
| Frankincense | Stable |
| Gift | Star |
| Glory | Three Wise Men |
| Gold | Virgin |
| Herod | Wonder |
| Immanuel | Stable |
| Inn | Worship |
| Jerusalem | |

SPOILT FOR CHOICE

Two beautiful hotels in two exceptional locations. The Two Bridges Hotel, in the heart of Dartmoor National Park, and The Bedford Hotel, in the perfect Devon market town of Tavistock.

- Individually styled rooms
- Award-winning dining
- Traditional afternoon teas
- Weddings, celebrations and private dining
- A warm welcome, always





THE BEDFORD HOTEL

Tavistock

The Bedford Hotel
01822 613221
www.bedford-hotel.co.uk

TWO BRIDGES HOTEL

Dartmoor

Two Bridges Hotel
01822 892300
www.twobridges.co.uk

Gardening Matters

What gardening tips does Elna Broe have for us as the cold winter months set in?

My outdoor tap has been insulated to prevent any water in the tap/ connecting pipe from freezing and causing damage. I am monitoring the pond if temperatures dip below freezing; if completely iced over, oxygen cannot reach the water and CO2 builds up. Some creatures, including young newts, stay in the pond over winter, so it's important to create a gap in the ice. Smashing ice can deafen and stress pond wildlife so it is best to rest a saucepan of hot water on the surface for a few minutes to melt a small area.

Before ordering my seeds for 2024, it is time to reflect on what worked in 2023 and what didn't quite go to plan. In the flower borders, white foxgloves, cosmos, and oxeye daisies offset the coloured perennials and provided a feast for pollinators. All of these will be used as gap fillers in the coming year. Sadly, none of my Ammi Majus seeds germinated. The weather was mild, and I should have put the seed packet in the fridge for a

fortnight before sowing to give the seeds the cold period Ammi Majus need to germinate.

In the fruit and vegetable garden, Primabella vine cherry tomatoes produced lots of sweet fruits until October and lived up to their blight-resistant label. Beetroot Boltardy and lettuce Rouge d'hiver did well but I will also try a bolt-resistant lettuce next time.

On the bean front, the climbing French bean Limka, another blight-resistant variety, produced an abundance of tasty, stringless, large flat pods - definitely one to grow again. Kew Blue (pictured), which surprisingly turns green when cooked, just kept on producing! My culinary skills were

tested to the limit as I endeavoured to discover the maximum number of ways one could incorporate (or disguise) beans in a meal. There must be a recipe book out there somewhere!



Kew Blue beans are "magic", they grow purple, but turn green when cooked.



Your mind is a garden; your thoughts are the seeds. The harvest will bring either flowers or weeds. (Attributed to William Wordsworth)

Answer p.19: moon and advent (because advent is the season but does not appear as a word in the Nativity story).



Home Improvements

PVC • Aluminium • Timber

Windows • Doors • Roof Lanterns • Bi-Folds

Orangeries • Garden Rooms • Conservatories

01483 727 474 | sales@krb ltd.com
 109 High Street | Horsell | Surrey | GU21 4SY
 76 High Street | Old Woking | Surrey | GU22 9LN



Where reputation matters







Yoga with Julie

Registered Yoga Teacher with Yoga Alliance

A Hatha style class where we connect with the breath, creating space in the body and mind. **Suitable for ALL levels**

Benefits of Yoga include increased flexibility, builds strength, energises, provides relaxation and helps to quieten the mind.


Bring a bottle of water, a mat and leave the rest to me. Limited mats available to hire at £1 per class.

Venue: Trinity Methodist Church, Brewery Road, Woking
When: Tuesdays and Thursdays
Time: 9:30 am – 10:30 am
Cost: £49 for 6 sessions or £10 per drop in.



Contact: Julie 07850 423585

ELECTRICIAN/HOME MAINTENANCE



Sockets, lights to full re-wires. Painting, tiling, and plaster repairs etc.

No job too small. Reliable.

Tim Dear
 01483 762967
 or 07973 777332

Recipes

White Christmas squares that can be an edible gift idea. 20 minutes in preparation time plus two hours of refrigeration. It makes about 20 squares.



White Christmas squares

500g good quality white chocolate, chopped coarsely,
130g rice krispies,
160g sultanas,
140g roasted macadamia nuts, chopped coarsely,
150g finely chopped dried apricots,
130g dried sweetened cranberries,
105g roasted pistachio nuts, chopped coarsely,
1 teaspoon ground cardamon.

Grease a 20 x 25cm traybake tin. Line the base and sides with baking parchment, extending the paper over the sides by about 5cm.

Melt the chocolate in a large heatproof bowl over a large saucepan of simmering water – don't let the water touch the base of the bowl (or use a Baine Marie). Remove from the heat, then quickly stir in the remaining ingredients.

Press the mixture firmly into the traybake tin, using the back of a wooden spoon, making sure to fill each edge. Put in the fridge for 2 hours or until firm. Cut into squares to serve or divide into bags to make an edible gift.

Cheese and rosemary savoury biscuits are an easy bake and make a lovely, deliciously cheesy biscuit gift. 25 minutes in preparation time plus 14 minutes baking. It makes about 25.



Cheese and rosemary savoury biscuits

80g wholemeal flour,
80g plain flour,
100g cold butter, chopped,
100g cheddar, finely grated,
1 small rosemary sprig, leaves finely chopped,
1 large egg yolk.

Heat oven to 180°C/160°C fan/gas 4. Line two baking trays with parchment paper.

Put both flours in a bowl and rub in the butter until the consistency resembles breadcrumbs. Stir in the cheese and rosemary, then add the egg yolk and, using a fork, mix it in. When the mix starts clumping together, use your hands to knead it to form a smooth dough.

Take walnut-sized pieces of dough, and using your hands, roll into balls and place on the baking trays. Flatten slightly with the heel of your hand. Bake for 12-14 mins. If you prefer, roll out between sheets of baking parchment, and cut into shapes. Bake as before.

Cool on the baking sheet for a few mins before moving to a wire rack to cool completely. Store in an airtight container for up to a week.

Do you enjoy...?

- Board games
- Playing the piano
- Reading poetry
- Listening
- Chatting
- Craft
- Throwing ball for a dog
- Walking
- Pottering in the garden
- No bake cookery
- Balloon games
- Quizzes
- Knitting



If so... why not come to enjoy these interests at Kettlewell House Nursing Home and enhance the lives of people who live here?

Any age
Any time
Any frequency

**Please contact Kate:
on 01483 221900 or 756116**

AUREM CARE
A Salutem Company



- Lawn Care
- Tree Care
- Hedge Cutting
- Fencing
- Weeding
- Feeding
- Beds
- Borders
- Planting
- Regular Maintenance
- Logs for sale

Does your garden need the personal touch?
Local gardener now working in your area
available to assist with all your garden needs.

**For all enquiries please contact Julie on:
01483 836490 / 07850 423585**

Fully Insured, References available.

THE IRON LADY



**39, High Street, Woking,
GU21 4UD**

T: 07900 567000

E: kassie44@hotmail.com

Book Review

Thursday Murder Club #4 The Last Devil to Die by Richard Osman.

This is the fourth investigation of the Coopers Chase retirement village Thursday Murder Club. The four friends, Elizabeth, Joyce, Ron and Ibrahim, joined by another resident, are intent upon finding out who murdered their old friend from the antiques business, Kuldesch. They are soon embroiled deeply into the killer's world and the importation of heroin and art fraud.

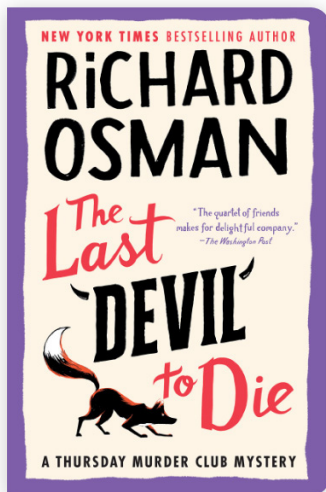
For those who've read books 1, 2 and 3, number 4 does not disappoint. It could be read as a stand-alone, but familiarity with the characters will more likely enhance the pleasure derived from the story. There is the usual humour (in particular, Joyce's diary entries) and shenanigans of the quartet. It is warm-hearted, entertaining and keeps you guessing with plenty

of red herrings; plus, there are scenes with the familiar Donna, Chris, and the unflappable Bogdan as the body count increases. We get to meet new characters and learn more about Ibrahim's past and Joyce steps out from behind Elizabeth's shadow, who spends more time caring for her husband Stephen. A sub-plot includes on-line romance fraud.

The big difference with the latest in the series is the emotional punch it packs, broaching the topic of dementia and surrounding issues with care and compassion.

I listened to the Audible version of the book, narrated adeptly by Fiona Shaw, with the bonus of an interview with Richard Osman at the end.

Vanessa McMurtrie



Did you know? The popularity of the Thursday Murder Club series has led to a recent news announcement that charity shops no longer want donated past copies; they're too numerous!

PRESTIGE MAINTENANCE WITHOUT THE PRESTIGE PRICES

We focus on giving our clients the highest level of service and offer you a first class experience while doing it in a way that it is affordable and convenient. We cover all makes and models.

Collection and delivery available. Let the garage come to you.

- Servicing • MOTs • Mechanical repairs • Diagnostics
- Air conditioning servicing • All servicing added to digital service data base



JPW AUTOS SURREY
GERMAN CAR SPECIALISTS

07599 034940



Facebook: @jpwautosurrey Instagram: @j.p.w.autos_surrey
Hare Hill, Addlestone, Surrey, KT15 1DT



- Independent Opticians
- Personalized service
- Warm & friendly approach
- Highest standards of eyecare
- Latest equipment
- A wide selection of frames, glasses lenses and contact lenses



To start your eye care journey, call Penny & Hayter Opticians on 01483 475205, or visit: www.pennyandhayter.co.uk

3 Albion Parade, High Street, Knaphill Woking, Surrey, GU21 2PS
info@pennyandhayter.co.uk

Violin Teaching

Grading exams / conservatoire entrance. DBS checked and ISM registered

Graduate:
Royal College of Music and University of Oxford

- Based in Woking
- Experience with all ages
- Face-to-face and Zoom
- Double vaccinated



CONTACT

Emmanuel Bach: 07903 582483
Emmanuel.F.Bach@gmail.com

Horsell Happenings

Christmas Concerts at St Mary's Church.

Mosaic Chamber Choir Christmas concert takes place on Saturday 2nd December 2023 starting at 7:30pm. Tickets are £15 for adults including a glass of mulled wine and £7.00 for children including a soft drink. Tickets are available via www.mosaicchamberchoir.org.uk

Horsell Sings led by the talented musician and songwriter Anna Tabbush will be performing their Christmas repertoire on Saturday 16th December at 7.30pm. The evening includes Anna performing with guitarist/vocalist Camilo Menjura and cellist Rachel Drayson. Doors open at 7pm. Tickets are £12.50, free for under 14s. Funds raised from the evening will be donated to charity. Tickets are available via www.horsellsings.org.uk



Horsell Sings conducted by Anna Tabbush

A total of 31 Martians Explorer Scouts, as well as volunteers from Horsell, recently enjoyed a yoga experience led by Shen from yogabyshen.co.uk.

During a fun and engaging session, the Scouts were guided through a full yoga session which included principles on how the mind can influence the body; this then led into slowly learning some basic poses that built up into a longer routine. Everyone felt relaxed and capable.

There was much laughter as the Explorers attempted moves from 'warrior poses' through to 'downward dog' and 'child's pose'. As the session ended, the Explorers engaged in a final meditation that left them feeling deeply relaxed. Overall, it was a great opportunity for the Explorers to try something new and to learn the physical and mental benefits of yoga.

Surrey Scouts consists of young people between the ages of 6-25, assisted by adult volunteers. You can contact them via www.surrey-scouts.org.uk



Martians Explorer Scouts enjoying a yoga session

The **Horsell Charity Calendar 2024** is available for sale at St Mary's Church as well as Apples & Pears, Premier, and Squires. Only £8 – dates for local events and items of general interest included within.

BOSCH Service

Motormech

Vehicle Service & Repairs to all leading makes

COMPLETE SERVICE £179.00 <small>INC. VAT</small>	MOT TEST £39.00 <small>INC. VAT</small>	FREE BRAKE & BATTERY CHECK	COMPLETE SERVICE & MOT £199.00 <small>INC. VAT</small>
STANDARD SERVICE £99.00 <small>INC. VAT</small>	BOOK ONLINE www.motormechguildford.co.uk OR CALL: 01483 502671		STANDARD SERVICE & MOT £119.00 <small>INC. VAT</small>

Unit 1H, Cathedral Hill Industrial Estate, Guildford, Surrey GU2 7YB

ASTOR
CARE & NURSING - AGENCY -
est. 1990

A chance to work part time in your local community

Full, paid training is given to anyone with no prior experience.

Homecare Association
RECOMMENDED BY

- Supporting clients in their own homes
- £11.05 - £13.45 + holiday pay & petrol
- You will need to be over 18 with your own car

Call 01483 797950 or visit: www.astoragency.co.uk



BOOKKEEPING AND PAYROLL EXPERTS

- **Bookkeeping** – day to day entry, VAT returns, management accounts, reconciliations
- **Payroll** – weekly and monthly processing, starters, leavers, RTI, P60s
- **Auto Enrolment**

We want to take away the headache of bookkeeping and payroll so you can concentrate on the more important aspects of running your business.

Please contact us for a free consultation to discuss how we can help support your business.

Tel: 01483 755311

Email: mail@pabsco.co.uk

Web: www.pabsco.co.uk

Sundial House, High Street, Horsell, Woking, Surrey, GU21 4SU

SURREY • BERKSHIRE • HAMPSHIRE • LONDON

pabsco
PAYROLL & BOOKKEEPING SUPPORT

FRÄZERS SURVEYORS

Your Local Chartered Surveyors

RICS HomeBuyer Reports

Building Surveys

Valuations

All Types Of Buildings

Over 30 Years Experience

Call Or Visit Us Today For A Competitive Quote

Frazers Surveyors Ltd
Thornash House, 37 High St, Horsell, GU21 4UR
T: 01 483 730909 E: surveying@frazers.co.uk
www.frazers.co.uk



CONVEYANCING AND PROBATE PRACTITIONERS

We offer the below services to our clients, conducted in a friendly, professional, supportive manner. We are excellent communicators using both technology and traditional standards of service to suit our clients.

- PROPERTY LAW SPECIALISTS
- SELLING AND/OR BUYING A PROPERTY
- REMORTGAGES • TRANSFERS • PROBATE
- WILLS • DECLARATION OF TRUSTS
- LASTING POWERS OF ATTORNEY
- COMMISSIONERS FOR OATHS

Please telephone or email for a free estimate or for further information.

Business Hours: 9am to 5.30pm Monday to Friday
Free Parking

T: 01483 485700 F: 01483 485701

E: info@lyonsandcompany.co.uk

6 Anchor Crescent, Knaphill, Woking, Surrey GU21 2PD

Woking Funeral Service



Proudly serving your local community since 1880

Woking Funeral Service are here to support and guide you. We offer a friendly, professional service to families.

Horsell

01483 355 752

78 High Street
GU21 4SZ

Call or visit our team in branch. Rachel Chambers and Debby Loughman are on hand to offer their experience and local knowledge to support you with all your bereavement needs.

- 24-hour service
- Bereavement advice
- Transparent pricing
- Private chapel of rest
- Floral tributes
- Memorial masonry
- Home visits
- Prepaid funeral plans
- International repatriation

We are here to help 24 hours a day.

www.wokingfunerals.co.uk





INSPIRE KITCHENS

Creating the heart of the home



Expert nursing
care tailored
to you



BOOK A
VISIT
TODAY

Experience the highest standard of nursing care, personal to you and your needs at Horsell Lodge. Our expert team of compassionate nurses are dedicated to ensuring your comfort and well-being, with a caring touch. Discover a place you can truly call home.

48 High Street
Knaphill GU21 2PY
01483 472814

www.inspirekitchensuppliers.co.uk

Call freephone

0808 175 4470

Find us online

caringhomes.org

Kettlewell Hill, Woking, Surrey, GU21 4JA

This rating is correct at time of print

Horsell Lodge

CARING HOMES

WHY SHOULD YOU CHOOSE SEYMOURS?



Partner Owned & Run

Because we're Partner run, the owner of the business will be personally involved in your sale.



20 Seymours Offices

All the care and attention of a local independent with the vast selling power of our network.



Knowledgeable Local Staff

Our staff live nearby to offer unrivalled local knowledge and expertise when you move.



Unrivalled Marketing

Attract the best buyers with high quality marketing photos, videos, brochures and social media.



National & London Buyers

Get exclusive access to buyers from 800 Guild member agents across the UK and London.



Property Finder Services

Sell with Seymours and we'll prioritise your search to find your dream home.



Supporter of Local Charities

Enjoy peace of mind working with an agent that supports local schools and charities.



No.1 In Surrey

We're proud to help more people move in our local community than any of our competitors.

If you're thinking of selling, please call us for a **free market appraisal of your property.**



Lloyd Moss
Partner



James Taylor
Partner

Seymours Horsell

01483 755222 | sales@seymours-horsell.co.uk



Seymours

Printed by Knaphill Print Co. Ltd. Tel: 01483 474900