

Horsell Matters



**The Village Magazine from your Parish Church
December 2021 – January 2022**

HORSELL DIRECTORY

St Mary's Church	Website: www.stmarys-horsell.org.uk	
	Baptisms, Weddings or Funerals	772134
Parish Office open:	Tuesday 9am-4pm, Wednesday & Friday 9am-1.00pm	
	stmaryshorsell@btinternet.com	772134
Vicar	Rev'd Dmitry Lutsenko	755618
	vicar@stmarys-horsell.org.uk	
Church Wardens	Brian Sheriff	474975
	Michael Couper	770920
Children's Worker	Marcus Brookfield	children@stmarys-horsell.org.uk
Treasurer	David Leach	823439
Cathedral Link	Gill Saville	773799
Pastoral Assistant	Margaret Johnson	762481
	Hilary Mills	772952
	Coral Colclough	747481
JAM (Jesus and Me)	Marcus Brookfield (4+) 10am most Sundays	772134
Babies and Toddlers	Angela Murphy	832943
	St Andrew's Room, Tues 9.30am to 11.30am, term time	
Twinkle Tots	Marcus Brookfield, St. Andrew's Room	772134
	Thursdays 9.30 to 11.30, term time	
Bellringers	Avril Blagbrough Tuesday evening practice—	767421
	occasional. Please check	
Trinity Methodist Church	office@trinitywoking.org.uk	730754
Horsell Evangelical Church	Rev'd Andrew Bents	822259
To Book: Village Hall	Paul Bowyer	764047
Parish Institute	www.horsell-parish-institute.org.uk	772134
Horsell Village School	Infants Head Teacher - Mrs Reeve	714804
Horsell C of E School	Junior Head Teacher—Mrs C Wand	761531
Woking High School	Head Teacher - Mrs M Walter	888447
Horsell Care	Helpline	730740
Residents Association	Alan Taylor	ajrolyat@gmail.com
Scouts, Beavers, Cubs	Ali Stubbs 07734 424568	gsl@horsellscouts.org.uk
Explorer Scouts (14-18 Yrs)	Brian Pinto	480904
Guides & Brownies	www.girlguiding.org.uk/information-for-parents/register-your-daughter/	
WI Horsell Afternoon	Alison Evans-Wyatt 765570	amevans705@gmail.com
	Meets on 1 st Thursday at 1.45pm in the Village Hall	
WI Horsell Evening	Mrs Sheila Tickner	760783
	Meets on 4 th Tuesday at 8.00pm in the Village Hall	
Woking Police Station	dial 101 from mobile or landline	

Great Joy

If you are anything like me and watch the news regularly, you'd agree that there isn't much joy in the world right now. Whether it's world news of global importance, our national or local matters – we are living through some difficult times.

The Bible reminds us of great joy that was given to us that first Christmas. Prophet Isaiah writes: 'for to us a child is born, to us a son is given, and the government will be on his shoulders. And he will be called Wonderful Counsellor, Mighty God, Everlasting Father, Prince of Peace.' The Son of God left the safety of heaven, took upon himself our flesh and blood and became one of us. His birth was much anticipated by the Jews who were waiting for the Old Testament prophecies about the Messiah to be fulfilled.

When, eventually, the child was born, the angel appeared and announced to the shepherds about great joy that came into this world: 'I bring good news that will cause great joy for all the people. Today in the town of David a Saviour has been born to you; he is the Messiah, the Lord'. (Luke 2:10-11)

The fact that the Saviour has come to

reconcile us to our Heavenly Father, to restore things to the original order, to forgive and save his creation comes with great joy. At last, the wait was over, the Saviour has been born. It's time to celebrate and be thankful! It's a time of great joy!

Christmas is a day of joy, but it's only one day a year. What about the other 364 days? How do we find joy in daily, routine, often trivial things? I find joy in seeing posts on 'Horsell Wire' – residents helping each other, local businesses doing well, seeing photos of local nature, etc.

This will be my first Christmas in Horsell and I look forward to seeing the houses decorated in lights, and to all the festivities – Christmas

Market, Choir Performance, Christmas Tree Festival, Schools concert and all Christmas Services at St Mary's church, the details of which can be found in the Diary and What's on.

Come and join us in celebrating the birth of Christ this Christmas!

Yours faithfully,

Rev'd Dmitry Lutsenko

Vicar of St Mary the Virgin, Horsell



ST MARY'S CHURCH REGISTERS

Burials & Cremations:

We offer our sympathy to the families and friends of those who have died:

Joan Booker, Doris Power, Elizabeth Williams, David Wilson

Baptisms: We welcome into the family of the church: Connie Wheeler

Weddings: We offer congratulations to Linda Lyon & Paul Armstrong

ST MARY'S CHURCH DIARY DECEMBER 2021

DECEMBER 2021

Wed 1 st	11.00am-4pm 8.00pm	Private Prayer Engine Room House of Prayer
Thurs 2 nd	9.30am-11am	Twinkle Tots
Fri 3 rd	9am-12noon 2.30pm-6pm	Pop In Coffee Christmas Tree Festival
Sat 4 th	10am-4.30pm 7.00pm	Christmas Tree Festival Mosaic Choir
Sun 5 th	8.00am 10.00am 4.00pm	Holy Communion (CW) Morning Worship Prayer at 4pm – at home
Wed 8 th	11.00am-4pm	Private Prayer
Thurs 9 th	9.30am-11am 6.00pm	Twinkle Tots Lodge Brothers Remembrance Service
Fri 10 th	9am-12noon	Pop In Coffee
Sat 11 th	7.30pm	Horsell Community Choir Carol Concert
Sun 12 th	8.00am 10.00am 6.30pm	Holy Communion (BCP) Parish Communion Contemplative Meditation
Mon 13 th	6.30pm	Horsell Schools' Carol Service
Tues 14 th	9.30am-11.30am 2.30pm 4.00pm 6.00pm	Baby & Toddler Group Christmas Service St. Andrew's School Carol Service (1) Prayer at 4pm – at home St. Andrew's School Carol Service (2)
Wed 15 th	11.00am-4pm	Private Prayer
Thurs 16 th	9.30am-11am 6.00pm	Twinkle Tots Junior School Nativity Service for parents
Fri 17 th	9am-12noon 9.45am	Pop In Coffee Junior School Nativity Service for the rest of the school
Sun 19 th	8.00am 10.00am 6.30pm	Holy Communion (CW) Parish Communion Nine Lessons & Carols Service
Tues 21 st	9.30am-11.30am 4.00pm	NO Baby & Toddler Group Prayer at 4pm – at home
Wed 22 nd	11am-4pm	Private Prayer
Thurs 23 rd	9.00am-12noon 9.30am-11am	Christingle Making in St. Andrew's Room NO Twinkle Tots
Fri 24 th	10am-12noon 3.00pm 5.00pm 11.30pm	Pop In Coffee Nativity & Christingle Service for younger children Candlelit Christingle & Family Carol Service Midnight Communion
Sat 25 th	9.30am	Christmas Family Communion
Sun 26 th	10am	Diocesan recorded service
Tues 28 th	9.30am-11.30am 1.00pm 4.00pm	NO Baby & Toddler Group Wedding Prayer at 4pm – at home
Wed 29 th	11.00am-4pm	Private Prayer
Thurs 30 th	9.30am-11am	NO Twinkle Tots
Fri 31 st	10am-12noon	Pop in Coffee

ST MARY'S CHURCH DIARY JANUARY 2021 – FEBRUARY 2022

JANUARY 2022

	10.00am	Morning Prayer
Tues 4 th	9.30am-11.30am 4.00pm	Baby & Toddler Group Prayer at 4pm – at home
Wed 5 th	11am-4pm 8.00pm	Private Prayer Engine Room House of Prayer
Thurs 6 th	9.30am-11am	Twinkle Tots
Fri 7 th	9am-12noon	Pop In Coffee
Sun 9 th	8.00am 10.00am 6.30pm	Holy Communion (BCP) Parish Communion Contemplative Meditation
Mon 10 th	8.00pm	PCC Meeting
Tues 11 th	9.30am-11.30am 4.00pm	Baby & Toddler Group Prayer at 4pm – at home
Wed 12 th	11.00am-4pm	Private Prayer
Thurs 13 th	9.30am-11am	Twinkle Tots
Fri 14 th	9am-12noon	Pop In Coffee
Sun 16 th	8.00am 10.00am 4.00pm	Holy Communion (CW) Parish Communion Messy Church
Tues 18 th	9.30am-11.30am 4.00pm	Baby & Toddler Group Prayer at 4pm – at home
Wed 19 th	11.00am-4pm	Private Prayer
Thurs 20 th	9.30am-11am	Twinkle Tots
Fri 21 st	9am-12noon	Pop In Coffee
Sun 23 rd	8.00am 10.00am 6.30pm	Holy Communion (BCP) Parish Communion Prayer & Peaceful Praise
Tues 25 th	9.30am-11.30am 4.00pm	Baby & Toddler Group Prayer at 4pm – at home
Wed 26 th	11.00am-4pm	Private Prayer
Thurs 27 th	9.30am-11am	Twinkle Tots
Fri 28 th	9am-12noon	Pop In Coffee
Sun 30 th	8.00am 10.00am	Holy Communion (BCP) Parish Communion

FEBRUARY 2022

Tues 1 st	9.30am-11.30am 4.00pm	Baby & Toddler Group Prayer at 4pm – at home
Wed 2 nd	11.00am-4pm 8.00pm	Private Prayer Engine Room House of Prayer
Thurs 3 rd	9.30am-11am	Twinkle Tots
Fri 4 th	9am-12noon	Pop In Coffee
Sun 6 th	8.00am 10.00am	Holy Communion (CW) Morning Worship

*All St Mary's Church Diary correct at time of going to press
Please do check the website before you turn up for any of our Christmas Services
For further details please look at our website: www.stmarys-horsell.org.uk*

Churchyard Cat

It's the time of year when people bring outdoor trees indoors. When I was little more than a kitten, I assumed that this was for my benefit, to give me a pine-scented scratching post out of the wintry rain and wind. I was quickly disillusioned about that, when I began to hone my claws! And the use of the tree for indoor climbing was strongly, even brutally, forbidden. Then the tree was laden with things that I could pat, cause to swing, cause to fall. I wasn't allowed to do that either. You won't be surprised to hear that I'm not enthusiastic about Christmas trees.

But my humans recall, every year, a cat from the past who teamed up with the family dog, climbed the tree, and neatly detached a number of decorations made of chocolate, which were then gobbled up by the dog. This

story always ends with someone saying, "What a clever cat!" But if I presume to lay a paw on a tree decoration, I am hustled from the room. It's not consistent; it's not fair.

Nevertheless, Merry Christmas, faithful readers!



Churchyard Cat – a disclaimer

I've been touched by reactions to the picture published with this column in the last issue of Horsell Matters, which was a shot not of me, but of another cat. He was black and white, and I, of course, am ginger. There were enquiries about this. Had I retired? Was I ill? Was I...dead? Well, as a human once put it, 'reports of my death are greatly exaggerated' and here I am, enjoying my usual good health. Slip-ups do occur even in the best-run magazines.

Parish in the Past

It appears that you could book Christmas entertainers, for your home, ninety years ago, according to St Mary's parish magazine for December 1931:

'It is hoped again this year to form a large Carol Party, with a view to dividing into two, so that calls may be better covered. There will be a first rehearsal next Sunday, after evensong, lasting until about half past eight, at which all who are willing to take part are asked to attend. Voices for all parts are needed.

Also will those who care to invite a visit from the Carol Party kindly communicate with Miss Mathews, Winona, Horsell Rise, giving, where possible, a choice of two or more dates.'



Woking Funeral Service



Woking Funeral Service is here to support and guide you. Since 1880, families in Woking and the surrounding areas have asked us to arrange their funerals because of our friendly, professional service.

For more information or advice on arranging a funeral, information on prepaid plans or to arrange a home visit, please call or visit us in branch. Disabled facilities available.

01483 397998

8 Anchor Crescent, Knaphill, GU21 2PD

01483 772266

119-121 Goldsworth Rd, Woking, GU21 6LR

www.wokingfunerals.co.uk



LEARNING TO BE
OURSELVES
HALSTEAD GIRLS

**CONTACT US
TO ARRANGE
YOUR VISIT**

HALSTEAD-SCHOOL.ORG.UK
01483 772682
LESS THAN 1 MILE FROM WOKING STATION

HALSTEAD
HALSTEAD PREPARATORY SCHOOL
FOR GIRLS AGED 2-11 YEARS
WOKING

The Star of Bethlehem



Was the star that guided the Magi to Bethlehem a myth or reality? Astronomers have debated this for centuries, so what are the possibilities for a scientific explanation that fits in with the nativity description from Matthew's Gospel? To match Matthew, the object must appear in the east, for long enough to guide the Magi for their entire journey, and then appear to stay still when they reached Bethlehem.

Last year, 2020, gave us an opportunity to explore two contenders, aided by the lockdown reducing atmospheric pollution and giving us clearer night skies than we've seen for several years – and the skies in the middle east 2000 years ago would have been (to us) stunningly clear.

Comet Neowise was quite possibly the first comet you'd have seen with your naked eyes; in a really dark sky it was truly impressive. As a comet nears the Sun the tails appear ever closer to vertical almost like a pointer.

Unfortunately for this contender, we have no evidence of a comet appearing at the appropriate time.

2020 also gave us some planetary conjunctions – when planets appear to be very close to each other – perhaps you saw Jupiter and Saturn coming very close in the evening sky a few days before Christmas. The closest conjunctions can give the illusion of a single object. Our ability to track back in time shows several extremely close conjunctions – in the years we now call 7BC (Jupiter and Saturn), and 3BC (Jupiter and Venus). The Magi would have been familiar with the motions of the planets, but the closeness and brightness of the 3BC event in particular must have generated some sort of 'this is really out of the ordinary' response.

The real miracle is of course what happened in Bethlehem then and in the following 33 years.

Brian Rowlatt

A Short History of Christmas Music

We are all familiar with the tradition of singing Christmas carols. Many of you will have learned their first carol at school (at the famous Nativity Play, dressed in some unusual costume, proudly made by mum). Maybe singing around the festive Christmas Tree, or at a service of Nine Lessons and Carols,



popular at this festive season. Many of us are less likely to know their origin, or how long ago carols were first sung. Here is a brief timeline of the history. It's generally accepted that one of the first Christmas carols ever to be recorded was the 129 AD 'Angels Hymn', then during the following centuries animals and stories about the Nativity were added. One of the oldest printed carols is the Boar's Head Carol, dating from 1521. Tradition has it that it was heard at Queen's College, Oxford as lunch was carried in. The Coventry Carol is a Medieval carol, still popular today. God Rest Ye Merry Gentleman and While Shepherds watched their flocks by night were also first put together many centuries ago. However, the more well-known version of God Rest Ye... is a Victorian setting. The first known Carol Concert was in 1880 in Truro Cathedral. Hark the Herald, Silent Night and Good King Wenceslas

all appeared during Victorian times. We are blessed with modern versions of the Nativity story by composers such as Eric Whitacre, Bob Chilcott and John Rutter. The tradition of carol singing is also fairly recent, encouraging people to join in and enjoy singing the wonderful Christmas Story.

Mike Couper

Horsell Matters Next Edition

February 2022/March 2022

Copy to be sent by **Tuesday 1st January**

by email please to:

stmaryshorsell@btinternet.com

Advertising: please contact:

Sales at Knaphill Print

Tel: 01483 474900

Email: **sales@knaphillprint.com**

The views expressed by contributors to the magazine are not necessarily those of the PCC of St. Mary's Church. All advertisements are accepted in good faith.



Sythwood Primary and Nursery School

Premises for Hire

Sythwood School have premises available for regular bookings, particularly suitable for sports clubs. Facilities include school hall, multi-use games area and field. All at competitive rates, terms and conditions apply.



For further enquiries please contact n.anderson@sythwood.surrey.sch.uk or **01483 770063**.

Christingles and The Children's Society



It works with young people who have suffered years of abuse, who have run away from home or are struggling with mental health issues. It looks out for young carers and those who are at risk of being groomed by gangs. It helps lone refugee children who have no one else to turn to in this country.

The Children's Society was founded 140 years ago by a young Sunday School teacher in London who saw the effects of poverty on children and decided to do something about it. Over the years the way The Children's Society has operated has changed to reflect the needs of children and how it can best help them. Their vision is a society built for all children.

The Christingle Services on 24th December are one of the highlights of Christmas at St Mary's Church. At the services every child is given a Christingle orange. The money raised from these services goes to support The Children's Society. The first Children's Society Christingle service took place in 1968 but we need to go back to a church in Germany in 1747 for the first Christingle.

St Mary's church has supported The Children's Society for many years. It is a national charity working to transform the hopes and happiness of young people facing abuse, exploitation and neglect. The Children's Society supports them through their most serious life challenges and campaigns for the big social changes that will improve the lives of those who need hope most.

SCHOLARSHIPS AVAILABLE FOR SEPTEMBER 2022
SEE WEBSITE FOR MORE DETAILS

Because your child deserves to be
nurtured
A supportive community that nurtures individuality and confidence.

Please register your interest online:
W: www.st-andrews.woking.sch.uk
E: admin@st-andrews.woking.sch.uk
T: 01483 760943

ST. ANDREW'S
X
SCHOOL · WOKING
INDEPENDENT DAY SCHOOL FOR GIRLS & BOYS AGED 3-13

~ Developing potential for life ~

[@StAndrewsWoking](https://www.instagram.com/StAndrewsWoking) [@standrewsschoolwoking](https://www.facebook.com/standrewsschoolwoking) [@standrewsschoolwoking](https://www.linkedin.com/company/standrewsschoolwoking)

Local Heaths in Winter



As summer drew to a close, the nightjars left Horsell Common to make their epic journey to sub-Saharan Africa. But not all heathland birds take this option. As the weather turns colder, spare a thought for our Dartford warblers. These brave little birds have spent most of the summer working hard to rear as many chicks as possible and must now face the winter. The Dartfords 'choose' to sit out the winter rather than risk a hazardous journey to warmer climes. It's a trade-off that will pay dividends if we have a mild winter, but won't end well if we have a harsh one! If you're new to birdwatching and would like to get to know heathland birds, start with a stonechat. Much easier to see than the secretive Dartford, it often perches on the top of gorse bushes, even in winter, flicking its wings and making a loud call like two small stones being hit together, "chip, chip; chip, chip". It's also one of the few birds that stays as a pair throughout the winter, so you might spot the male, and the slightly drabber female in the same vicinity.

Once you've got your eye in on stonechats, they might lead you to a Dartford warbler, as they can sometimes be seen together. People say the warblers are picking off the insects disturbed by the larger birds. So if you see a pair of stonechats, look out for a Dartford warbler skulking along behind them! A fleeting glimpse might be all you'll get at this time of year.

The Dartford warblers rely on gorse bushes to get them through the winter. A dense thicket of gorse will provide food, such as spiders and insects, and shelter from the elements. Listen out for their buzzy calls on your winter walks.

More on our website at www.tbhpartnership.org.uk.

Sarah Bunce

Thames Basin Heaths Partnership

Help Girlguiding

Over 120 girls in Horsell are currently members of Horsell Girlguiding - from our youngest members in Rainbows through to our older girls in Rangers and Young Leaders.

With so many enthusiastic young members we now need to appeal for additional volunteers to support some of our units!

Wednesday Rainbows will close in December as our current leaders are unable to continue so our vital and urgent appeal is to find a new volunteer leadership team to takeover. Rainbows is very popular in Horsell and many girls have started their Girlguiding journey there. This is a rewarding opportunity to work with our youngest members aged 5-7. Full support and training will be given.

Zoe our Rainbow leader shares why she enjoys volunteering -

"I've found the experience of leading Rainbows fantastic - my daughters both got a place in Rainbows when I volunteered and I got to see them learn and grow through both of their 2 year stints and saw them off happily into Brownies. It's been so rewarding to support the younger unit members - I love them running up to me in the High street shouting things like "I tied my own shoelaces this morning Otter!" and seeing their faces full of pride when they have earned their badges."

We also need additional leaders for Thursday Brownies (5.30 -7pm) and Thursday Guides (7.30-9.15). Both of these units are very popular and

successful but to continue being great units we need extra adults to make the activities happen. We are flexible so if you can only do a couple of evenings a month, we'd still love to hear from you

Finally our Rangers also need additional leaders. They meet on Friday nights, once or twice a month. The girls are 14-18 (and are a super group of young ladies!) and need a supportive adult to help make their activities happen. This is a perfect opportunity if you cannot volunteer earlier in the day as they do not meet weekly and the meetings are later. We are planning to offer the Duke of Edinburgh scheme to the girls so maybe you completed your DofE or were a Ranger as a teenager and would like to give our girls the same opportunities - and maybe re-live some of your experiences as a leader!

Girlguiding in Horsell can only happen if we have the adult volunteers to make our magic, fun, smiles and laughter happen. Even if you cannot logistically help weekly at Rainbows, Brownies, Guides or Rangers there are various ways you can help and support us to continue offering a fantastic Girlguiding offering locally.

Volunteering with us is a rewarding and fun experience - we are a friendly, sociable and committed group of ladies who always welcome new volunteers into our team, supporting them and providing lots training!

If you would like to get involved - please get in touch via chobhamandhorsell@gmail.com.

Many thanks



Do you need an Angel in your life?

Exceptional home care visits from exceptional carers

Most people in need of care would prefer to stay in their own home. Our home care visiting service is carefully tailored to suit you or your loved ones needs. We can help people to retain their independence and stay connected to friends, relatives and pets, safe in their own home where they want to be.

Our caregivers are carefully selected. We find excellent people with the right mix of skills, experience and a true caring nature, so that they can provide consistently superior home care.

We can help with activities ranging from shopping and companionship, to personal care, hospital discharge support and end of life care.

We can visit from one hour each week to every day, for as long as you need us to help with:

- * Companion & Social Care
- * Personal Care
- * Dementia & Alzheimer's Care
- * Post-Hospital Stay Care
- * Palliative
- * End of Life Care



Find out more about how a Visiting Angel can help
Call 01483 931 934

www.visiting-angels.co.uk/centralsurrey/
CentralSurrey@visiting-angels.co.uk
 Guildford, Woking, and Surrey Heath Boroughs .



Children's Corner

Glittery Icicles

These icicles can be made in a wide range of sizes and used as Christmas tree or other decorations. They are suitable for small children to make, with a little adult supervision.



You Will Need

- Aluminium Foil
- Children's Clear-setting Craft Glue
- Glitter – blue, aqua, mint, silver or pastel pink work well for these
- Narrow ribbon or thread suitable for hanging loops

Instructions

1. Tear or cut a piece of aluminium foil into a triangle, making it a little longer than you want your icicle to end up being. Keep the triangle wider in shape rather than narrow.
2. Place the foil shiny side down and fold the edge that will be the top of your icicle over a few centimetres to the dull side of the foil.
3. Starting at one end of the folded edge, loosely wrap the foil with the shiny side outermost until it is completely rolled.
4. Gently squeeze the icicle into shape, pressing gently at the top and tightly at the bottom to form an icicle shape. Use glue to seal loose edges if necessary.
5. Using a paint brush, brush glue over the icicle and sprinkle it with glitter. Lean icicles against a box (or similar) and let dry.
6. Sew thread through using a needle, or glue a band of ribbon onto the top of the icicle to make a hanging loop.



Strawberry Santa Hat Biscuits

Easy and quick to put together, these little hats can be used to decorate biscuits (home made or bought), cup-cakes, or a number of them used to add a festive touch to a larger dessert.

Makes 12 biscuits
 You will need

Ingredients

250 ml of double cream, whipped until it holds its shape or a 400g tub of vanilla buttercream/icing (you won't need all of this)

- 12 large strawberries of similar size
- 12 Oreos or similar sized biscuits

Equipment

Icing pen/bag with a star shaped nozzle

Instructions

1. Wash and hull the strawberries. Dry the outsides with kitchen towel and then place them bottom down on a clean piece of kitchen towel for about 10 minutes to draw out any excess wetness.
2. Fill the icing pen/bag with the whipped cream (or butter cream/icing).
3. Attach a strawberry to an Oreo biscuit with a dab of whipped cream or butter cream/icing from the icing pen/bag.
4. Pipe single stars close together (so they touch) around the base of the strawberry.
5. Lastly pipe a single star on the top of the strawberry, forming a hat bobble. Repeat the process for the remaining biscuits and strawberries.

These are best eaten within a couple of hours otherwise the biscuits become soggy.
 susan.rowlatt@hotmail.com



'What's on'
for young people and families at St. Mary's.
Your parish church in Horsell
December — January

Sunday Morning All-Age Worship
Lively songs, thought-provoking Bible stories, fun and family fellowship at 10am
On the first Sunday of the month
5th December, 2nd January, 6th February


Jesus and Me
A time for children 3+ to learn and Worship together during our 10am Sunday Services
(Every Sunday except when we have All-Age Worship)

 **Sunday 16th January**
4 - 5.30pm
Fun Activities for all ages
Booking required via stmaryshorsell@btinternet.com by 9th January
Please bring your own tea

Christingle Services on Christmas

3pm: Nativity and Christingle Service especially for the younger members of the family
5pm: Candlelit Christingle and Family Carol Service for slightly older children, teenagers and the young at heart
Christingle Making: 9am - 12noon; 23rd December

Candlelit Service of Nine Lessons
Sunday 19th December
6.30pm


Christmas Day Celebratory Family Communion
25th December
9.30am


Pop In Coffee
Why not drop in for a cuppa, piece of cake & chat?



Fridays:
(Toys available)
School drop off to 12 Noon

Tuesday Morning Baby and Toddler Group
Weekly during term time
9.30 to 11.30am

Last session of term 14th December
Restarts: 4th January
Pop in for a coffee, chat, play, and meet new friends

Christmas Tree Festival
Friday 3rd December 2.30—6pm
Saturday 4th December 10am - 4.30pm

Displays of trees from the community
Mrs Claus (Saturday 2 - 4pm)
Refreshments Musical Performances
Run in Conjunction with the Village Christmas Fair

 **Thursday Twinkle Tots**
Baby and Toddler Group
Weekly in term time
9.30am to 11.00am
Last session of term: 16th December
Restarts: 6th January
Come and make friends
Enjoy play, craft, Bible stories and songs

For more details, contact the Church Office on 01483 772134

Children's Corner

CROSSWORD

Solve the crossword to reveal the name of a special festival when we celebrate the birth of Jesus!

Across

- Songs about Jesus' birth.
- They came to see baby Jesus in a stable.
- The name of the angel that came to Mary.
- The book about God.
- Name of the special baby.
- The town where Jesus was born.
- Name of Jesus' mother.
- What appeared in the sky to guide the wise men to baby Jesus.
- The place where baby Jesus was born.

No peeking, but if you get really stuck, here are the answers

1 carols, 2 shepherds, 3 Gabriel, 4 Bible, 5 Jesus, 6 Bethlehem, 7 Mary, 8 star, 9 stable

Book Shelf

The Fort by Adrian Goldsworthy

Adrian Goldsworthy is a respected historian of the ancient world and something of an authority on the ancient Roman military. His recently published book *The Fort* follows on from his well-received *Vindolanda* trilogy. The Dacian wars in the time of the Emperor Trajan were major conflicts about which little is known beyond the information which can be deduced from the famous Trajan's column in Rome. Goldsworthy has taken advantage of the lack of clear knowledge to set out a story which, whilst being fictional, gives his thoughts about the origins of the Second Dacian War.

Fortunately for the reader, it is not necessary to know very much about Roman history to follow and enjoy this book. Our hero centurion Flavius Ferox, who we last encountered serving in Britannia, finds himself being transferred to the Danube frontier with Dacia (roughly modern Romania) where he is put in charge of a fort which lies in the path of one of the main possible invasion routes from Dacia. Flavius can smell trouble coming and he prepares for, and heroically leads his men during, a siege.

At the same time Ferox has to contend with complications in his private life when his wife – a British tribal queen whom he had married in the last book of the *Vindolanda* trilogy – and his former mistress arrive together at the fort. As if that were not enough Ferox

must deal with a group of British tribesmen under his command who have sworn to kill him, and with the machinations of the soon-to-be Emperor Hadrian who is depicted in the book as a skilled and power-hungry manipulator.

Goldsworthy has a solid grasp of the workings of the Roman military. His depiction of the outbreak of war and of a siege in Roman times is a good adventure story. He is somewhat less sound,

I feel, in his description of character. He has a tendency which I find a little irritating to kill off minor characters possibly because they have served their narrative purpose and will not reappear in the next book.

The book is an enjoyable read for those who like historical fiction set in classical times but not so rewarding if you are hoping for deep insights into character.

Roger King





The best care comes from a genuine interest in people

We all want to have a plan to help look after our loved ones when they need some extra support, but don't always know what's best.

So we take time to get to know you and understand your individual needs to help you put these plans in place.

Our care home is open for viewings

Call us on freephone 0808 223 5401
Find us online caringhomes.org
Kettlewell Hill, Woking, Surrey
GU21 4JA

Horsell Lodge
CARING HOMES

Kitchen Secrets

Winter Spiced Marmalade

2kg Citrus fruits
(4 large oranges,
2 pink grapefruit,
2 lemons)
Cinnamon sticks
(about 30cm)
3 star anise
1 tsp cloves
2.5l water
2.25kg granulated
cane sugar
250g brown sugar
Jam thermometer.

Using a vegetable peeler, peel the zest off the fruit leaving as much as the white pith as possible and set aside.

Cut the fruit in half and squeeze out juice. Set the juice aside.

Roughly cut the de-zested, juiced fruit into pieces and add to a large saucepan along with the pulp and seeds from the juicer. Add the whole spices and the water and bring to the boil. Put on the saucepan lid, turn down the heat and simmer gently for about two hours.

Pile up the reserved strips of zest and cut into tiny matchsticks with scissors.

After 2 hours of simmering pass the liquid through a fine sieve, making sure you squeeze all the water from the pith. Discard pith, pulp and spices.

In a preserving pan, add the drained liquid, the reserved juice and the snipped up zest. Stir and bring to the boil.

Add the sugar and stir until dissolved.

Bring to a rolling boil and boil until the mixture reaches setting point (105C). This will be at least 15 mins.

Remove from heat and allow to cool slightly before pouring into sterilised jars. Seal with metal lids and leave to cool completely until set.



Butternut Squash and Lentil Strudel

Serves 4-6

1 tablespoon olive oil
4 shallots, sliced
1 large clove garlic, crushed
675g butternut squash, peeled de-seeded and cut into 2.5cm cubes
110g brown lentils, cooked
1 x 400g can of chopped tomatoes
1 tsp. chopped fresh thyme
1 bay leaf
½ tsp sugar
Salt and pepper
6 sheets of ready made filo pastry
1 tablespoon finely chopped fresh parsley
Milk for glaze
1 tbs. Sesame seeds

Heat the olive oil in a large saucepan. Add the shallots and cook until soft and transparent.

Stir in the squash and lentils, add the garlic and cook for a further minute.

Add the tomatoes, thyme and bay leaf and cook for about 20mins or until the squash and lentils are soft but still hold their shape. The mixture should be moist but not runny. Season with salt, pepper and the sugar. Remove from the heat and leave to cool. Remove the bay leaf.

Preheat the oven to 200C. Grease a large baking sheet.

Arrange overlapping filo pastry sheets on some greaseproof paper and brush with a little olive oil.

Place the squash and lentil filling in a line at one end of the pastry and scatter with parsley. Using the greaseproof paper to help, roll up the pastry as for a Swiss Roll, trying to maintain a fairly tight roll. Lift the greaseproof and gently tip the strudel onto the baking sheet.

Brush with milk and sprinkle with sesame seeds. Bake in oven for 30 minutes, or until golden brown.

Best Beloved



On 2 November 2021 there was a Celebration of Life Service for **Elizabeth Williams.**

The Reverend Sarah Hayes agreed to come back to take

the service and there were tributes from the Church Family, read out by Hilary Mills, and her own family did their own tributes. The 23rd Psalm was read by Mike Couper.

The family tribute revealed that throughout her life she had done some interesting things such as helping with a soup kitchen, serving soup to the homeless and hungry when she was a teenager and later on in her life assisting with the administration work for the Billy Graham Campaign when he came to England.

It was lovely seeing the church full of people celebrating the life of my mum.

Ruth Pattenden
Daughter of Elizabeth Williams

My wife Pam and I lived in Horsell from 1967 to 1986, worshipped at St Mary's, and were very much involved in church and village life.

Philip Alderman and I were Churchwardens when **John Fowles** was appointed as Vicar in 1977. I don't have much memory of the process of appointing John to St Mary's. Did we have to draw up a Parish Profile and advertise and interview applicants? My first real memory is of inviting John round for tea and scones in the garden



of our house in Hill Close. Does that still happen?

John Fowles came to Horsell shortly after we had lost our son Richard at the age of 6 weeks.

We are so grateful for John's ministry, and especially for agreeing to baptise our fourth child, also named John, in St Peter's Hospital in May 1978, even though he was a healthy baby, but it was simply to set our minds at rest, because Richard had not been baptised.

I am writing this, having seen John's name in the church registers of the October/November edition of HM, and you might be interested in the death notice in the Church Times:

On 13 July, the Revd Christopher John Fowles: Assistant Curate of Worplesdon (1963-69); Vicar of Chessington (1969-77); Horsell (1977-95); Rural Dean of Woking (1992-94); Hon. Canon of Guildford Cathedral (1993-95); aged 90.

We kept in touch with John after we moved away, or perhaps I should say that John kept in touch with us over the years. We visited him in Englefield Green after he retired, and again, more recently, at the College of St Barnabas in Lingfield, where he lived in recent years.

He always wrote at Christmas, and then, when that became difficult, phoned for a chat, and always said how grateful he had been for his time in Horsell.

Mike and Pam Hails

Woking U3A

Something for the New Year

The Woking U3A is part of a UK wide, cooperative movement of people no longer in full time work who come together to continue their social, educational and creative interests in a friendly and informal environment.

Woking Area U3A is one of 23 branches in Surrey and is a good place for people who want to take up new interests, learn and make new friends. We joined the U3A about five years ago following an open afternoon and signed up for a few of the many groups on offer. The U3A is different from other similar organisations because rather than paying people to give talks etc., members are encouraged to share their knowledge and talents with other members and run groups themselves. Woking currently has more than 70 groups from Art Appreciation, Yoga, Gardening, Poetry, Bridge, Languages, Music, Politics, Current Affairs, Craft, Walking and many more. Theatre trips, meals and other days out are also on offer. There really is something of interest for most people and new members are especially welcome.

During lockdown zoom meetings worked well for a lot of groups but now many have returned to in person meetings. Each month, Woking U3A hosts a meeting at St Andrew's Church, just by Goldsworth Park shopping centre where there is

typically a speaker or some form of entertainment.

So, if you are interested in pursuing something different why not take a look at the website www.wokingareau3a.co.uk and consider becoming a member.



- ✿ Lawn Care
- ✿ Tree Care
- ✿ Hedge Cutting
- ✿ Fencing
- ✿ Weeding
- ✿ Feeding
- ✿ Beds
- ✿ Borders
- ✿ Planting
- ✿ Regular Maintenance
- ✿ OAP rates
- ✿ Logs for sale

Does your garden need the personal touch?
Local gardener now working in your area available to assist with all your garden needs.

For all enquiries please contact Julie on:

**01483 836490 /
07850 423585**

Approved Contractor for The Woking Garden Project
& Age Concern Surrey.
Fully Insured, References available.

Lightbox

Sarah Brown appointed new Director of The Lightbox gallery and museum

The Lightbox have announced that Sarah Brown will be the new Director of The Lightbox gallery and museum. Sarah, previously Principal Keeper at Leeds Art Gallery, Leeds Museums and Galleries, will take up the role on the 1st December 2021. She succeeds Marilyn Scott following her decision to step down to pursue full time cultural consultancy.

Sarah Brown has led Leeds Art Gallery as Principal Keeper overseeing all aspects of the artistic programme and was responsible for the capital refurbishment following the reopening of Leeds Art Gallery in 2017. As one of the founding members of Yorkshire Sculpture International she has contributed to establishing this major festival celebrating the history, presentation and commissioning of sculpture which launched in 2019. She is an experienced fundraiser within both the public and private sector. In 2019 she was a judge for the Paul Hamlyn Award and the Hepworth Sculpture Prize and has chaired the Northern Art Prize celebrating artists living and working in the North. In 2021 she judged the Kleinwort Hambros emerging artist prize. With over 20 years of experience she has curated numerous exhibitions, working with UK and international artists, commissioning new work and has been

responsible for major acquisitions for Leeds Museums and Galleries, one of the strongest collections of sculpture in the UK in partnership with The Henry Moore Institute.

Sarah studied a BA History of Art at School of Oriental and African Studies SOAS, (University of London) and completed an MA Museology at the Sainsbury Centre of Visual Arts, (University of East Anglia). Pam Powell Chair of the board of Trustees said *'On behalf of the trustees, I am pleased to announce the appointment of Sarah Brown as Director of The Lightbox gallery and museum. Sarah brings deep expertise in the visual arts, a track record in extending access to the arts, and in forging exciting new partnerships to enrich the cultural life of the community she serves'*

Sarah Brown said *'I am delighted to be appointed as Director of The Lightbox gallery and museum and look forward to working with the team to build on the incredible achievements to date. The Lightbox is a unique museum placing art and wellbeing at the core and the combination of sustainable architecture, the outstanding collection, and impressive programme of exhibitions and engagement together create an important space for audiences.'*



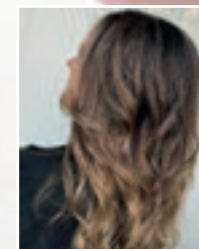
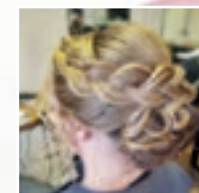
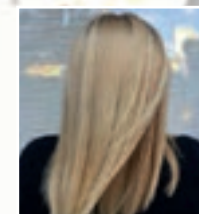
*New Director of The Lightbox gallery and museum
Sarah Brown Image:
© Sarah Mason*



Are you ready for a new experience?

Then look into Valerie French

- Over 35 years of experience
- Current regular training
- Free Consultations
- 5* Rating Good Salon Guide
- Hair & make up specialists for all occasions
- Unisex hair cutting
- L'Oreal hair treatments
- L'Oreal and TIGI products
- Special Offers
- Heating/Air con



t: 01483 767214

valeriefrenchhairsalon@gmail.com

Good Salon Guide
7 Anchor Crescent, Knaphill, Woking, GU21 2PD



20% off colour to all new clients on a Tuesday

Senior and student discount 10% off

**Please bring this advert with you to take advantage of the offers above*



Deck the halls...



& the kitchen!

INSPIRE KITCHENS
Creating the heart of the home

48, HIGH STREET, KNAPHILL, GU21 2PY
 01483 472814



Alan Greenwood & Sons

Independent Family Funeral Directors



*A Traditional Family Owned Local Company
 Proud to Serve and Support the Community
 Latest Jaguar or Mercedes Hearses and Limousines
 Home visit arrangements
 Pre-paid Funeral Plans and Memorials
 Caring and Compassionate 24 hour Service*



It is our policy to price match any written quote or estimate, to enable you to choose your Funeral Director by personal preference rather than funeral costs

14 Guildford Road Bagshot GU19 5JH 01276 473 707	Mimbridge Garden Estate Station Road Chobham GU24 8AR 01276 858363	66 Send Road Send Woking GU23 7EU 01483 210 222	1 Anchor Hill Knaphill GU23 7EU 01483 487 889
---	--	---	--


Please visit our website for full details of our services and to view all our local obituaries
www.alangreenwoodfunerals.com

FRAZERS
 SURVEYORS

Your Local Chartered Surveyors

- RICS HomeBuyer Reports
- Building Surveys
- Valuations
- All Types Of Buildings
- Over 30 Years Experience
- Call Or Visit Us Today For A Competitive Quote

Frazers Surveyors Ltd
 Thornash House, 37 High St, Horsell, GU21 4UR
 T: 01483 730909 E: surveying@frazers.co.uk
www.frazers.co.uk

INSTYLE TILES

**GRAND
 OPENING**

Bring this with you and
 receive 10% off your first order

16A Lower Guildford Road,
 Knaphill, Woking
 GU21 2EG
www.instyle-tiles.co.uk
 01483 941 249



Checkatrade.com
Where reputation matters

SURREY TRADING STANDARDS APPROVED

HomePro FENSA APPROVED
WINDOW & DOOR INSTALLATIONS

Home Improvements

PVC • Aluminium • Timber
Windows • Doors • Roof Lanterns • Bi-Folds
Orangeries • Garden Rooms • Conservatories

01483 727 474 | sales@krbltd.com
109 High Street | Horsell | Surrey | GU21 4SY
76 High Street | Old Woking | Surrey | GU22 9LN



The 1:1 Diet with Olya

Get in touch to start Your transformation
07875 777 296
www.one2onediet.com/Olya
Facebook @olya.one2onediet
Instagram @olya.one2onediet
Google Woking Weight Loss Centre
All 5+ reviews



Simple plan. Proven results.
Confidential consultations.

What is stopping You?
Get in touch today.

THE 1:1 DIET
by Cambridge Health Partners

Computer Repairs Upgrades & Advice

Call Mike
07505 100386



We are Open and able to work using Covid safe practices

Computer Crashing/Virus?
Problem with iPad or Tablet?
Computer Running Slow?
Supporting Home and Office
Help with Technical problem

Apple, Microsoft, iPad, Tablet,
Windows, Linux, Internet,
Networking, Broadband, Wireless LAN,
Raspberry Pi, Software, Hardware

Office: 01483 830200
Email: mike.sheldon@thecomputervan.co.uk
Web: www.thecomputervan.co.uk

euronics
the home of electricals

Our best sellers

Enjoy our range of top selling brand appliances



Price Match Guarantee | Super Service | Expert Knowledge | Contact-Free Delivery

beko

Electric Double Oven



CDFY22309X

- Fan oven, LED digital display
- 3 programmes, touch controls
- 5 shelves
- Dimensions: H89 x W59.4 x D56.7cm

Only **£369.99** | 2 Year Guarantee*
A Energy Rated

beko

Built-in Single Oven



CIMY91X

- Multifunction oven with LED timer
- Large oven capacity
- New design elements
- Dimensions: H59.5 x W59.4 x D56.7cm

Only **£239.99** | 2 Year Guarantee*
A Energy Rated

RSM Domestic Appliances
FRIENDLY SERVICE • BIG SAVINGS • FAST DELIVERY

YOUR LOCAL DOMESTIC APPLIANCE SUPERSTORE
Knaphill • Guildford • Ashted • Bookham • Epsom
01483 475000
Buy online at rsmdomesticappliances.com

Terms and Conditions apply. Sold as an agent of Euronics Limited. All rights reserved. All offers are subject to availability while stocks last. Delivery & installation charges may apply. Exclusions and radius apply. See in store for full details. Images for illustration purposes only. Copyright Euronics 2021. E&OE 2021.
*Register appliance within 90 days to extend standard 1 year to a 2 year guarantee FOC.



BOOKKEEPING AND PAYROLL EXPERTS

- **Bookkeeping** – day to day entry, VAT returns, management accounts, reconciliations
- **Payroll** – weekly and monthly processing, starters, leavers, RTI, P60s
- **Auto Enrolment**

We want to take away the headache of bookkeeping and payroll so you can concentrate on the more important aspects of running your business.

Please contact us for a free consultation to discuss how we can help support your business.

Tel: 01483 755311

Email: mail@pabsco.co.uk

Web: www.pabsco.co.uk

Sundial House, High Street, Horsell, Woking, Surrey, GU21 4SU

SURREY • BERKSHIRE • HAMPSHIRE • LONDON

pabsco
PAYROLL & BOOKKEEPING SUPPORT

Sophie Sews

CURTAINS | BLINDS | INTERIORS

We are a small local company that creates bespoke curtains and blinds made-to-measure in Woking and Surrey. We also make a range of co-ordinating soft furnishings to complement your made-to-order curtains and blinds, including cushions and upholstery.

We offer a bespoke and individual service where we measure, advise, make and fit all our work. We aim to spend time with you to build a picture of your aspirations for your home, thereby reducing the rather daunting task of choosing styles and fabrics.

In short, we listen, we design, we create and we fit. That's Sophie Sews.

76 High Street, Horsell GU21 4SZ
01483 598056
sophie@sophiesews.com
www.sophiesews.com



CONVEYANCING AND PROBATE PRACTITIONERS

We offer the below services to our clients, conducted in a friendly, professional, supportive manner. We are excellent communicators using both technology and traditional standards of service to suit our clients.

- PROPERTY LAW SPECIALISTS
- SELLING AND/OR BUYING A PROPERTY
- REMORTGAGES • TRANSFERS • PROBATE
- WILLS • DECLARATION OF TRUSTS
- LASTING POWERS OF ATTORNEY
- COMMISSIONERS FOR OATHS

Please telephone or email for a free estimate or for further information.

Business Hours: 9am to 5.30pm Monday to Friday
Free Parking

T: 01483 485700 F: 01483 485701

E: info@lyonsandcompany.co.uk

6 Anchor Crescent, Knaphill, Woking, Surrey GU21 2PD

Violin Teaching

Grading exams/conservatoire entrance

DBS checked and ISM registered

Graduate: Royal College of Music and University of Oxford

Emmanuel.F.Bach@gmail.com

Emmanuel Bach

07903 582483



Based in Woking
Experience with all ages
Face-to-face and Zoom
Double vaccinated

MAGICIAN

Magician, children's entertainer & balloon modeller

Based in Horsell.

For a stress-free party. Call **Tim** on

07900 278056

www.timallenmagician.co.uk

ELECTRICAL SERVICE

CRH Electrical Services

14, Swallow Rise, Woking, GU21 2LG

T: 01483 476776 or 07979 468613

www.crelectrical.co.uk

Electrician/Home Maintenance

Sockets, lights to full re-wires. Painting, tiling, flat pack assembly and plaster repairs etc.

No job too small. Reliable.

Tim Dear: 01483 762967
or 07973 777332

IRONING SERVICE

The Iron Lady

39, High Street, Woking, GU21 4UDT

T: 07900 567000

E: kassie44@hotmail.com



Seymours

Welcome to Horsell



01483 755222