

An aerial photograph showing a church entrance with a red-tiled roof and a paved walkway leading to a graveyard. The graveyard contains several headstones and two large, rounded evergreen trees. In the background, a road with parked cars and a sidewalk is visible. The text 'Horsell Matters' is overlaid in white at the top.

# Horsell Matters

The Village Magazine from your Parish Church  
August – September 2025

# Horsell Directory

<b>St Mary's Church</b>	<a href="http://www.stmarys-horsell.org.uk">www.stmarys-horsell.org.uk</a>	
	Baptisms, Weddings or Funerals	772134
<b>Parish Office open</b>	Helen Gravette Tues 9am-4pm, Wed & Fri 9am-1.00pm	772134
	<a href="mailto:stmaryshorsell@btinternet.com">stmaryshorsell@btinternet.com</a>	
<b>Vicar</b>	Revd Dmitry Lutsenko <a href="mailto:vicar@stmarys-horsell.org.uk">vicar@stmarys-horsell.org.uk</a>	07365 356228
<b>Children &amp; Families' Worker</b>	Rebecca Connolly <a href="mailto:childrenandfamiliesstmarys@gmail.com">childrenandfamiliesstmarys@gmail.com</a>	772134
<b>Church Wardens</b>	Brian Sheriff Mark McMurtrie	474975 07815 635609
<b>Treasurer</b>	David Leach	07708 866196
<b>Pastoral Assistants</b>	Janet Johnson Margaret Johnson Hilary Mitchell Coral Colclough	591756 762481 715459 747481
<b>JAM (Jesus and Me)</b>	Rebecca Connolly (3+) 10am most Sundays	772134
<b>Tiny Treasures</b>	Rebecca Connolly, St Andrew's Room Tues 9.30am to 11.30am, term time	772134
<b>Bell-ringers and Servers</b>	Alan Nichols [occasional] Tues. evening practice	767852
<b>Trinity Methodist Church</b>	<a href="mailto:office@trinitywoking.org.uk">office@trinitywoking.org.uk</a>	730754
<b>Horsell Evangelical Church</b>	Revd Andrew Bents	822259
<b>To Book the Village Hall</b>	Paul Bowyer	764047
<b>Parish Institute</b>	<a href="http://www.horsell-parish-institute.org.uk">www.horsell-parish-institute.org.uk</a>	772134
<b>Horsell Village School</b>	Infants Head Teacher – Mrs J Reeve	714804
<b>Horsell C of E School</b>	Junior Head Teacher – Mrs C Wand	761531
<b>Woking High School</b>	Head Teacher – Mrs M Walter	888447
<b>Halstead St Andrew's School</b>	Head Teacher – Mr A Ward	760943
<b>Horsell Care</b>	Helpline	07552 553414
<b>Residents Association</b>	Alan Taylor <a href="mailto:ajrolyat@gmail.com">ajrolyat@gmail.com</a>	
<b>Scouts, Beavers, Cubs</b>	Ali Stubbs <a href="mailto:gsl@horsellscouts.org.uk">gsl@horsellscouts.org.uk</a>	07734 424568
<b>Explorer Scouts (14-18 Yrs)</b>	Roy Thompson <a href="mailto:explorers@woking.scouts.host">explorers@woking.scouts.host</a>	
<b>Guides &amp; Brownies</b>	<a href="http://www.girlguiding.org.uk/information-for-parents">www.girlguiding.org.uk/information-for-parents</a>	
<b>WI Horsell Afternoon</b>	Lyn Clark <a href="mailto:lyn.clark@btinternet.com">lyn.clark@btinternet.com</a>	01932 353382
	Meets on 1st Thursday at 1.45pm in the Village Hall	
<b>WI Horsell Evening</b>	Mrs Joan Cox	760783
	Meets on 4th Tuesday at 7.45pm in the Village Hall	
<b>Woking Police Station</b>	dial 101 from mobile or landline	

# Homily

St Mary's sits at the heart of Horsell village and has an important role to play in the lives of our local community. As the village church we are here for all parishioners, during both good and tough times. We offer a place for prayer, reflection, celebration, worship and to mourn.

This summer we held multiple weddings when couples made their vows to each other and in front of God. We also held funeral services for members of our community whose time on earth has sadly come to an end, allowing friends and family to remember them and give thanks for their lives.



As part of our community ministry, we provide Pop-In coffee each Friday morning to enable villagers to meet-up and make new friends. Also, St Mary's is a popular concert venue and in July 'Horsell Sings' gave another excellent performance.

Our place in the local community is special and that is why we arrange and support multiple events throughout the year. At the recent 'Picnic on the Green', Rebecca, our Children and Families' worker organised outdoor fair games and she also helped at the Year 6 school trip to Swanage. On the 13th September we will be open for 'Heritage Day' to share the history of St Mary's and for an unrivalled view of the village from the top of the tower.

On 27th September we will be holding a quiz night to which any one can join in. On 5th October we will be celebrating Harvest Festival, where gifts of food are given to Woking's York Road project. You can learn more about what is happening at St Mary's by following our social media channels or from our website. We would love to see you at one of our events or services soon.

Mark McMurtrie  
Churchwarden

## SERVICES CARRIED AT ST MARY'S CHURCH

### FUNERALS, BURIALS AND CREMATIONS

*We offer our sympathy to the families and friends of those who have died:*  
Joanna Curlewis

### BAPTISM AND THANKSGIVING

*We welcome into the family of the church:* Lucas Zanker

### WEDDINGS

*We offer congratulations to:*  
James Chadwick & Amy Rendall Ardit Prenci & Rebecca Ackroyd

## ST MARY'S CHURCH DIARY **AUGUST 2025**

<b>Sun 3rd</b>	8.00am 10.00am	Holy Communion (BCP) First Sunday Service
<b>Tues 5th</b>	9.30am-11.00am 2.00pm 8.00pm	NO Tiny Treasures Baby & Toddler Group Service at Kettlewell House Engine Room House of Prayer
<b>Fri 8th</b>	10.00am-12noon 10.00am	Pop In Coffee Engine Room House of Prayer in the Trinity Chapel
<b>Sun 10th</b>	10.00am 12.15pm 6.30pm	Parish Communion On Your Own Lunch Contemplative Meditation
<b>Tues 12th</b>	9.30am-11.00am	Tiny Treasures Baby & Toddler Group
<b>Fri 15th</b>	10.00am-12noon	Pop In Coffee
<b>Sun 17th</b>	8.00am 10.00am	Holy Communion (BCP) Informal Service
<b>Tues 19th</b>	9.30am-11.00am	NO Tiny Treasures Baby & Toddler Group
<b>Fri 22nd</b>	10.00am-12noon	Pop In Coffee
<b>Sun 24th</b>	10.00am	Parish Communion
<b>Tues 26th</b>	9.30am-11.00am	NO Tiny Treasures Baby & Toddler Group
<b>Fri 29th</b>	10.00am-12noon	Pop In Coffee
<b>Sun 31st</b>	8.00am 10.00am	Holy Communion (BCP) Breakfast Church

**THE CHURCH BUILDING WILL BE OPEN:**  
**Tuesdays, Wednesdays, and Thursdays** until 4pm in the summer  
 until the clocks change

## ST MARY'S CHURCH DIARY **SEPTEMBER 2025**

<b>Tues 2nd</b>	9.30am-11.00am 2.00pm 8.00pm	Tiny Treasures Baby & Toddler Group Service at Kettlewell House Engine Room House of Prayer
<b>Fri 5th</b>	8.45am-12noon 10.00am	Pop In Coffee Engine Room House of Prayer in the Trinity Chapel
<b>Sun 7th</b>	8.00am 10.00am 6.30pm	Holy Communion Service (BCP) First Sunday Service Peaceful Prayer & Praise
<b>Tues 9th</b>	9.30am-11.00am	Tiny Treasures Baby & Toddler Group
<b>Fri 12th</b>	8.45am-12noon	Pop In Coffee
<b>Sat 13th</b>	11.00am-4.00pm	Heritage Day
<b>Sun 14th</b>	10.00am 6.30pm	Parish Communion Contemplative Meditation
<b>Mon 15th</b>	7.30pm	PCC Meeting
<b>Tues 16th</b>	9.30am-11.00am	Tiny Treasures Baby & Toddler Group
<b>Fri 19th</b>	8.45am-12noon	Pop In Coffee
<b>Sat 20th</b>	12.00pm	Wedding
<b>Sun 21st</b>	8.00am 10.00am 6.30pm	Holy Communion (BCP) Informal Service Deanery Confirmation Service
<b>Tues 23rd</b>	9.30am-11.00am	Tiny Treasures Baby & Toddler Group
<b>Fri 26th</b>	8.45am-12noon	Pop In Coffee
<b>Sun 28th</b>	10.00am 12.15pm 4.00pm	Parish Communion On Your Own Lunch Messy Church
<b>Tues 30th</b>	9.30am-11.00am	Tiny Treasures Baby & Toddler Group

## ST MARY'S CHURCH DIARY **OCTOBER 2025**

<b>Wed 1st</b>	8.00pm	Engine Room House of Prayer
<b>Fri 3rd</b>	8.45am-12noon 10.00am	Pop In Coffee Engine Room House of Prayer
<b>Sun 5th</b>	8.00am 10.00am 6.30pm	Holy Communion (BCP) First Sunday Service Peaceful Prayer & Praise



**St Mary's Church, Horsell:** @StMarysChurchHorsell  
*All correct at the time of going to print.*

For further details please look at our website: [www.stmarys-horsell.org.uk](http://www.stmarys-horsell.org.uk)

# Uncovering Your Fruitfulness

1 Peter 3:15 'Always be prepared to give an answer to everyone who asks you to give the reason for the hope that you have.'

One of the great joys of being a Christian is realising that God chooses to work through us, wherever we are. One of the tricky things, however, is learning how to spot these opportunities. So many of us just do not have the words, the tools, or know how we are already being fruitful for Christ in our daily lives.

Here, at St Mary's church, we have embarked on the journey of becoming more fruitful through our preaching series on the importance of Evangelism. We use life examples, personal stories and recent research, as we keep growing in confidence and understanding the principles and approaches to Evangelism. One of the recent changes to our Sunday informal services, on the 1st and 3rd



Sundays of the month, to aid and encourage fruitfulness, is the introduction of a 'Family News' slot. Members of our congregation spend about five minutes sharing how God has been working in their lives.

We are growing a culture of invitation, so that in and out of our church we can invite people to experience that God can be good in their lives. Why not come and join us for one of our informal services to experience this for yourself (1st, 3rd and 5th Sundays at 10am). Or, if you prefer a more traditional parish communion service, on the 2nd and 4th Sundays of every month.

Revd Dmitry Lutsenko  
Vicar of St Mary the Virgin Horsell

# Heritage Open Day

St Mary's Church and Tower will be open on **Saturday 13th September 11am and 4pm**. Learn about the history of our church and the unique view across the village from the top of the tower. The first Tower tour slot is available at 11am and the last Tower tour is at 3:30pm. Tours start on the hour and half hour and are 25 minutes in length. Please arrive 5 minutes before your slot to receive a briefing. A maximum of 6 people per tour and a recommended donation of £5 per person.



Please note that to climb the tower you must be at least 8 years old and those aged between 8-17 must be accompanied by a responsible adult.

All who undertake the Tower tour must be physically fit to climb the 64 steps and not suffer from claustrophobia. Please use the QR code for booking or email Helen in the office [stmaryshorsell@btinternet.com](mailto:stmaryshorsell@btinternet.com)



# Currency for the Cathedral

Since 2006 John Mitchell has been running a Coins Scheme to help with fundraising for Guildford Cathedral.

It invites donations of foreign coins and notes from any country in the world, including the UK, and no matter how old or out-of-date. We have raised £31,200 so far - every penny of which goes to help the finances of the Cathedral on Stag Hill.

Gifts of any quantity are welcome: odd coins, long forgotten, tucked away in desk drawers, left over from holidays or business trips; piggy-banks half-full of 5p or unwanted coppers; obsolete coins, special commemoratives, whole collections or items found in house clearances. It all raises money which is much needed.

Packets labelled "Coins Scheme" can be left at St Mary's Church, or you can

contact me, John Mitchell, by email ([37petherwin@gmail.com](mailto:37petherwin@gmail.com)) or on 01483 715459 to arrange collection.

Do please help us if you can.

John Mitchell.



# Churchyard Cat

In keeping with most of my fellow felines, I find myself rather keen on breakfast, be it the 'wet' or the 'dry' variety. I understand that the same is true of our church congregation, who flocked to Breakfast Church at the end of June. Many enjoyed a hearty feast with fellowship and worship, so much so, that it is to be repeated this month, on Sunday 31 August at 10:00. I must try to sneak in for the odd titbit.

Just two weeks later, on Saturday 13 September, is the Heritage Open Day, with

refreshments, when humans explore my church, with many climbing the tower to admire my churchyard and the surrounding views of the village. I make sure to keep out of the way, after a quick check on the refreshments.

At this time of year, many cat people go off on holiday and entrust us to the care of neighbours or catteries for endless weeks: I must work on my cold-shouldering technique for when they return and expect all to be forgiven - it isn't.

## Deanery Confirmation Service

Sunday 21<sup>st</sup> September at 6.30 pm  
A special service  
Led by the Bishop  
Candidates from four  
Woking parishes

We would like as many of the  
congregation to attend and support  
our three candidates and to  
represent St Mary's

Holy Communion  
All welcome

Saint Mary the Virgin



## QUIZ NIGHT

Challenge your general knowledge and socialise at our Quiz Night!  
Gather your friends or come along on your own, and we'll set you up with some fellow quizzers to make a table.  
Max 6 people per table  
Cheese and Wine  
Bookings via the office  
stmaryshorsell@btinternet.com

**Saturday, 27<sup>th</sup> September**  
AT 7 PM  
**ST MARY'S CHURCH**  
in the St Andrew's Room

**INSPIRE KITCHENS**  
Creating the heart of the home



## Knaphill Print Co. Ltd.

50 years and More supplying Quality Print.....  
Wedding Stationery, Funeral Order of Service  
Banners, Clothing, Magazines, Branded Gifts  
Leaflets, Menus and More

**PRINT IS  
THE POETRY  
OF THE  
VISUAL WORLD**

16 Lower Guildford Road, Knaphill, Woking, Surrey GU21 2EG.  
01483 474900 sales@knaphillprint.com www.knaphillprint.com

48 HIGH STREET,  
KNAPHILL, WOKING,  
SURREY, GU21 2PY  
01483 472814  
www.inspirekitchensuppliers.co.uk



# Christian Aid Celebrates 80th Anniversary



Elaine Davies was fortunate to attend a special celebration service recently, at a packed Westminster Abbey, to mark Christian Aid's 80th anniversary. She shares her experience of the joyful occasion and reminds us of its foundations.

The service was a wonderful opportunity to give thanks for all that Christian Aid has achieved, and to re-commit to supporting its future projects, with speakers reflecting on the extraordinary path Christian Aid has travelled since its foundation.

We were reminded by Christian Aid CEO Patrick Watt, and Bishop Sarah Mullally, that Christian Aid began with an act of solidarity—when in 1945 churches across Britain responded to the devastation of the Second World War, to help refugees.

Over the years, it has grown into the organisation it is now, which stands in solidarity with our most marginalised global neighbours, of all faiths and none, and aims to demonstrate its core values of dignity, equality, justice and love.

For 80 years, it has provided humanitarian relief and long-term development support for poor communities worldwide, while highlighting suffering, tackling injustice and championing people's rights.

Bishop Sarah Mullally shared three things that have remained constant at Christian Aid:

- Its commitment to help people live life in all its fullness
- Its insistence that communities affected by poverty must lead the response
- Its deep roots in the UK church - faithful supporters who give, act and pray

In his sermon, Rev. Dr Jerry Pillay, General Secretary of the World Council of Churches, said we are called to be God's lifeline in a suffering world. Referring to Jesus' parable of the Good Samaritan (Luke chapter 10), he said: "The Good Samaritan crossed boundaries. He stayed. For as long as it took. This is the kind of compassion our world needs today. Hope in God is not a passive resignation... it's working with God as agents for change."

Christian Aid relies on donations to continue its work. Find out more at <https://www.christianaid.org.uk/our-work/about-us>

## Christian Aid Week Amount Raised

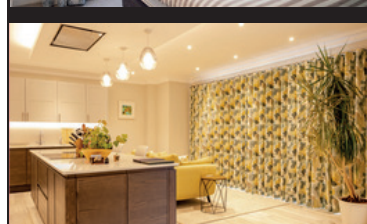
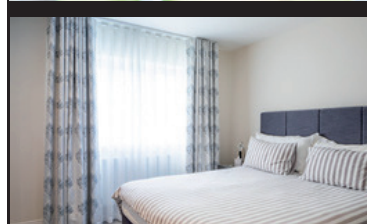
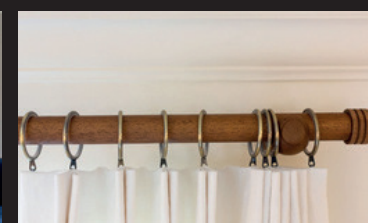
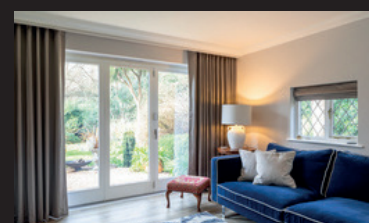
We're very pleased to announce that our Christian Aid Week appeal raised the wonderful total of £3,414.70 (including Gift Aid), exceeding last year's total. These funds will be used by Christian Aid to improve the quality of life for many needy communities around the world.

Thank you to everyone who so generously donated to this cause.

Read more at <https://www.christianaid.org.uk/>

# Sophie Sews

CURTAINS | BLINDS | INTERIORS



Renovating or refreshing your home?

Experience the best in bespoke, made-to-measure soft furnishings. Call now for an in-home design consultation or visit our shop in Horsell.

Let Sophie Sews turn your interior vision into a stunning reality.

## CONTACT

76 High Street, Horsell, Surrey, GU21 4SZ

01483 598056

[www.sophiesews.com](http://www.sophiesews.com)

# Grave Matters

---

The first full incumbent of Horsell was Albert Mangles a much-loved vicar who was in Horsell for 35 years.

---

The Reverend Albert Mangles (1809-1875) came from a well-to-do family, being one of a family of 12 children and a father who was an MP. After Merton College, Oxford, Albert was both married and ordained in 1833 and began his ministry as curate of Worplesdon and then moved briefly to Wargrave, Berkshire. He was presented as the perpetual curate of Horsell in 1840, a post (salaried at £83 p.a., but not from the endowment) he would hold for 28 years, before becoming a full vicar in 1868.

In 1840 a schoolmaster was living at the vicarage in Horsell, so Albert and his wife Georgiana lived at Beech Hill in Mayford, and continued to live there throughout his ministry, with, in the 1871 census, six servants and five visitors - reflecting his share of the family's considerable wealth. Having taken the evening service at Horsell each Sunday, Albert Mangles would then go to Brookwood Asylum (later Brookwood Hospital) to preach to the patients there. He and his wife would help with lessons at the village school, Mrs Mangles continuing the work after Albert's death. He was a friend to both the rich and the poor and founded the West Surrey Benevolent Fund in 1846

as well as being elected to the Woking School Board in 1874 and was a manager of Westfield School. He died on 2 November 1875 of congestion of the lungs after a short illness and was given a funeral at St Mary's attended by hundreds in the church and the churchyard where many were reduced to tears. The funeral left Beech Hill with over 20 local clergymen leading the procession and, on arrival at Church Hill, the coffin of polished oak was conveyed to the church by sixteen pall bearers.

In April 1876 a memorial to Albert Mangles was placed in the church and this brass plate can still be seen on the wall of the North Aisle.

Albert's brother, Ross Donnelly Mangles, was Chairman of the East India Company and later MP for Guildford, and Ross Donnelly's son, Ross Lewis, although a civilian, was awarded the Victoria Cross in the course of the Indian Mutiny and is buried in Brookwood Cemetery.

Rosemary and Richard Christophers



Memorial to Albert Mangles

# Forgiveness Matters

---

Forgiveness really does matter – it is a central principle of the Christian faith. When Jesus was being tortured to death on the cross, he prayed 'Father forgive them, they do not know what they are doing' (Luke chapter 23 v 34).

---

In the Lord's Prayer Jesus taught his followers to ask God: 'forgive us our sins as we forgive those who sin against us.' This is surely the most challenging line in that prayer.

Jesus's disciple Peter got the idea. Peter asked Jesus, how often should I forgive someone who wrongs me? As many as seven times? Peter thought that forgiving someone seven times sounded a lot; he was being generous. But the answer to him from Jesus was, 'not seven times but seventy seven times' (Matthew chapter 18 v 22). In other words, don't try to keep score - just be ready to forgive, and forgive, and go on forgiving without limit.

The word 'sin' means wrongdoing. We tend not to think of ourselves as 'sinners' – well, we may not be perfect, but we feel we are basically all right. But that it is to forget that we do not live our lives as God intended us to



live. We do things that we know to be wrong and fail to do things that we know to be right. We are not alone in that. St Paul expressed his exasperation at his own failings and tendency to sin see, for example, his letter to the Romans chapter 8.

In international relationships we see how feuds develop and then continue. At a personal level, if we think someone has wronged us then we may feel angry or resentful. This creates barriers between us and the other person which can last for a long time and damage our relationship. If we are to be truly forgiving, then we need some how to be prepared to let go of resentment rather than nurse it. The challenge is to build bridges to join us positively with others rather than walls. Then we can truly come to live in peace with one another.

Roy Wernham, Licenced Lay Minister

## Horsell Matters: Next Edition October /November 2025

Copy to be sent by 1st September by email please to: [stmaryshorsell@btinternet.com](mailto:stmaryshorsell@btinternet.com)

Advertising: please contact Sales at Knaphill Print, Tel: 01483 474900 or email: [sales@knaphillprint.com](mailto:sales@knaphillprint.com)

The Horsell Matters team extend their grateful thanks to Knaphill Print Co Ltd for producing this not-for-profit Parish magazine.

The views expressed by contributors to the magazine are not necessarily those of the PCC of St. Mary's Church. All advertisements are accepted in good faith.

# SUMMER OFFERS

at your local independent electrical retailer

 euronics

**Hotpoint**

## 1400 Spin 7kg Washing Machine

NSWE7469WSUK



- 16 programmes including Eco Programme
- Steam hygiene, rapid option
- Anti-stain technology, 24-hour delay
- H85 x W59.5 x D54cm

Only **£319.99** | 1 Year Labour 10 Year Parts  
A Energy Rating

**Hotpoint**

## 1400 Spin 9kg Washing Machine

NM11948WSAUK



- 15 programmes incl. 30-min Quick Wash
- ActiveCare technology, delay timer
- Child lock, range of cycles
- H85 x W59.5 x D60.5cm

Only **£369.99** | 1 Year Labour 10 Year Parts  
A Energy Rating

 **BOSCH**

## 1400 Spin 8kg Washing Machine

WGE03408GB



- 14 programmes including 15-min quick wash
- SpeedPerfect, ActiveWater
- Add laundry feature, delay timer
- H84.5 x W59.8 x D58.8cm

Only **£429.00** | 2 Year Warranty  
A Energy Rating

 **BOSCH**

## 1400 Spin 10kg Washing Machine

WGG254Z0GB



- 20 programmes incl. 15-min quick wash
- SpeedPerfect, anti-stain removal system
- Add laundry feature, delay timer
- H84.5 x W59.8 x D58.8cm

Only **£649.00** | 5 Year Warranty  
A Energy Rating

**RSM**  
Domestic Appliances  
FRIENDLY SERVICE • BIG SAVINGS • FAST DELIVERY

**YOUR LOCAL DOMESTIC APPLIANCE SUPERSTORE**

**1-2 Albion Parade, High Street, Knaphill, GU21 2PS**

Also in Guildford, Ashted and Epsom Downs

**01483 475000 • www.rsmdomesticappliances.com**

Terms and Conditions apply. Sold as an agent of Euronics Limited. All rights reserved. All offers are subject to availability while stocks last. Delivery and installation charges may apply. Exclusions and radius apply. See in store for full details. Images for illustration purposes only. Copyright Euronics 2025.



## Prince Roofing

Father and Son Roofing Specialists  
with over 50 years of experience

- ❖ Tile Roofs ❖ Slate Roofs
- ❖ Specialist Leadworks ❖ Flat Roofs
- ❖ Roof Repairs ❖ Roof Maintenance
- ❖ Storm Damage and Insurance Works
- ❖ Roof Maintenance ❖ Drone surveys
- ❖ Chimney Repairs and Rebuilds
- ❖ Fascias, Soffit and Guttering

For a free quotation call or email

Fred at Woking: 07950 875 411

Chris at Odiham: 07904 270 313

Office: 01256 702428

Email: info@princeroofing.co.uk



- Lawn Care
- Tree Care
- Hedge Cutting
- Fencing
- Weeding
- Feeding
- Beds
- Borders
- Planting
- Regular Maintenance
- Logs for sale

Does your garden need the personal touch?  
Local gardener now working in your area  
available to assist with all your garden needs.

For all enquiries please contact Julie on:

**01483 836490 / 07850 423585**

Fully Insured, References available.

**RESTORE OFFICIAL**  
A CLEANER ALTERNATIVE

## SUPERIOR CARPET & UPHOLSTERY CLEANING

**FREE CALL OUT  
QUOTATIONS**

Call: Harry James: 07852 565644  
Email: restore@restoreofficial.com

## THE IRON LADY



39, High Street, Woking,  
GU21 4UD

T: 07900 567000

E: kassie44@hotmail.com

## 1ST & 3RD SUNDAY WITH A MUSIC BAND

An informal service for all.  
Do join us!



First and Third Sunday  
Every month at 10am

3rd and 17th August  
7th and 21st September  
5th and 19th October

Saint Mary the Virgin

## JESUS AND ME



A time for children aged 3+ to learn  
and worship together during our  
10am Sunday Services

Every Sunday except the first  
Sunday of the month  
when we are all together in church

Saint Mary the Virgin

## FRIDAY POP-IN COFFEE

8.45am until noon  
(term time)



10am to 12 noon  
(school holidays)

Why not drop in for a  
cuppa, a piece of cake and  
a chat once you have done  
the school drop-off?

Saint Mary the Virgin

## BREAKFAST CHURCH

JOIN US AT 10 AM ON  
SUNDAY 31<sup>ST</sup> AUGUST FOR BREAKFAST,  
FELLOWSHIP, WORSHIP, PRAYER  
AND BIBLE STUDY.

INFORMAL SMALL GROUP DISCUSSION  
LEARNING MORE ABOUT THE BIBLE  
CHATting TOGETHER OVER BREAKFAST



ALL WELCOME, ALL AGES



Saint Mary the Virgin



4.00pm to 5.30pm

28<sup>th</sup> September

Explore a Bible theme through  
craft, food, games or nature.  
There will be a short celebration  
with a story, songs and prayers.

For all ages!  
Picnic tea provided!

Messy Church is part of The Bible Reading Fellowship (BRF), a  
Registered Charity.  
brf.org.uk

Saint Mary the Virgin

## TINY TREASURES

Baby and Toddler Group  
Every Tuesday (term time)  
9.30am to 11.00am

Term starts  
2nd September

In the St Andrew's Room  
St Mary's Church, Horsell

Come and make friends,  
enjoy play, craft,  
and songs

Saint Mary the Virgin

## HARVEST FESTIVAL

10am Sunday 5th October  
All welcome  
Refreshments after the service



Donations of non-perishable items  
will be collected during the service  
and donated to the York Road Project

Saint Mary the Virgin

## STAY IN TOUCH

St Mary's Parish Office is open  
Tuesday 9am to 4pm  
Wednesday & Friday 9am to 1pm  
Telephone: 01483 772134



Visit our website at  
stmarys-horsell.org.uk



Follow us  
StMarysChurchHorsell  
st\_marys\_horsell\_matters



Email us:  
stmaryshorsell@btinternet.com  
childrenandfamiliesstmarys@gmail.com  
horsellmatters@gmail.com

Our services are streamed via You Tube  
@stmaryshorsell

Saint Mary the Virgin

# COLOURING FUN

## GET READY FOR SCHOOL



Which year are you going to? \_\_\_\_\_  
 Write the name of your school here \_\_\_\_\_  
 Write the name of your teacher here \_\_\_\_\_  
 Write the names of your best friends at school here \_\_\_\_\_

Did you know? Many years ago children went to Sunday school at church to learn to read and write.



At St Mary's church we have a group for children at 10am on Sundays. The group is called 'JAM', which stands for Jesus And Me. Children (aged 3 to 11) do fun activities and learn about Jesus and faith. Come with your family and try our JAM!

## Needed! Somewhere to Build the Emerald City.

After acclaimed success with Evita and Anything Goes, local award-winning WAOS Musical Theatre is setting its sights on the Land of Oz.

However, they face a practical hurdle as it prepares for its upcoming production of The Wizard of Oz this 2nd to 6th December at the Rhoda McGaw Theatre, Woking. They desperately need space to build the scenery for the show.

WAOS MT productions are a cornerstone of Woking's vibrant amateur theatre scene, bringing high-quality musical theatre to local audiences, including Horsell, and fostering community talent. Their need for a temporary workshop space presents an opportunity for a local business or property owner to directly support the arts in Woking.

The society is urgently appealing to the local community and businesses for help. They are seeking a suitable temporary space for approximately 6 months, starting as soon as possible, to build and store the sets before they move to the theatre. Ideal locations would include:

- A barn or large outbuilding
- An empty warehouse unit
- A vacant retail unit or large empty shop
- A very large garage or industrial unit

Key requirements are ample floor space of at least 45 to 60m<sup>2</sup>, reasonable ceiling height, secure



Lorraine Landon and Dianne Skeel, set painting for High Society 2019

access, and ideally, basic power and lighting. The society is a charity but is happy to discuss reasonable terms for rent or potentially a sponsorship arrangement in exchange for the space.

Can You Help?

If you have, or know of, a suitable space that could become WAOS MT's temporary scenic workshop for The Wizard of Oz, please contact the society urgently at: [membership@waosmt.co.uk](mailto:membership@waosmt.co.uk)

Help WAOS build the magic and bring the Land of Oz to Woking this December.

# Garden Matters

Following on from the last Garden Matters article, it seems appropriate to talk about the habitats that our little insect friends need to survive and thrive in our gardens.

Also, with a few weeks left of the summer holidays, this is a perfect time for children and teenagers, maybe with a little help from their carer, Mum, Dad or Grandparents, to display their artistic talents (so evident in all the amazing flowerpot creatures constructed in Horsell) to create a unique bug house.



Bug Hotel

With a strong, waterproof outer case and bamboo or hollow plant stem tubes (not plastic), pinecones and wood with holes of varying sizes drilled through, various creatures can seek refuge and shelter from bad weather over the winter. The one shown is made from untreated timber (it's important that no chemically treated material is used) and coated with toxic-free paint and varnish and could provide homes for ladybirds, lacewings,

several solitary bee species and spiders. The bug house is best situated fixed firmly onto a tree or fence post (at least a meter off the ground) that gets morning sun and later shade, sheltered from strong winds and incoming rain.

It would be great to think that Horsell can host lots of fabulous bug hotels. If you have

made one, why not send in a photo of it for a future edition of the magazine? [HorsellMatters@gmail.com](mailto:HorsellMatters@gmail.com)

Hoverflies hibernate in leaf litter, tree bark and piles of compost so, as well as the bug house, a little undisturbed area of garden waste, left to its own devices over the winter, will suit these fine.

Elna Broe



Have you heard about our **Breakfast Church** which takes place when we have a 5th Sunday in the month? Our next one is on **31st August**. The idea is to get together for about 1 hour, from **10am for breakfast, fellowship, worship, prayer and a bit of Bible study**. It's very informal, all are welcome; our first one was a great success. Give it a try!

Checkatrade.com  
Where reputation matters

SURREY  
TRADING STANDARDS  
APPROVED

HomePro  
FENSA  
APPROVED WINDOW & DOOR INSTALLATIONS

## Home Improvements

PVC • Aluminium • Timber  
Windows • Doors • Roof Lanterns • Bi-Folds  
Orangeries • Garden Rooms • Conservatories

01483 727 474 | [sales@krbltd.com](mailto:sales@krbltd.com)  
109 High Street | Horsell | Surrey | GU21 4SY  
76 High Street | Old Woking | Surrey | GU22 9LN

[www.yogabysheh.co.uk](http://www.yogabysheh.co.uk)

# YOGA PILATES BODY BALANCE

**MONDAYS**  
10:30am & 6:30pm Pilates  
11:30am & 7:30pm Yoga

**TUESDAYS**  
11:30am Body Balance  
7pm Yoga – Beginner

**WEDNESDAYS**  
11:30am Yoga – Beginner

**THURSDAYS**  
9:30am Yoga  
10:30am Body Balance

Fun and friendly environment for all abilities. Weekly classes based on sound physiotherapy practice. There is nothing like a live class where strangers have fun and become friends.  
Corporate Events and Life Coaching.

**DISCOUNTS ON BLOCK BOOKING**  
Tel: 07960 700630

Email: [yogabysheh@gmail.com](mailto:yogabysheh@gmail.com) Web: [www.yogabysheh.co.uk](http://www.yogabysheh.co.uk)

# Recipe



An easy Plum and Blackberry Crumble, perfect for September, making the most of juicy plums and ripe blackberries. It's comforting, easy to make, and a real crowd-pleaser!  
Serves: 6-8 Prep time: 20 minutes. Cooking time: 30-35 minutes.

FRUIT FILLING	CRUMBLE TOPPING
500g plums, halved and stoned (pits removed)	150g plain flour
200g blackberries (fresh or frozen)	75g cold butter, cut into cubes
50g caster sugar (or to taste, depending on sweetness of fruit)	75g demerara sugar (or light brown sugar)
1 tbsp cornflour (cornstarch)	50g rolled oats (optional, for extra crunch)
1 tbsp water	½ tsp ground cinnamon (optional)

**Prepare Fruit:** In a medium saucepan, combine the halved plums and blackberries with the caster sugar. Cook over a medium heat for 5-7 minutes, stirring occasionally, until the fruit starts to soften and release its juices.

**Thicken Fruit:** In a small bowl, mix the cornflour with 1 tbsp water to create a smooth slurry. Stir this into the fruit mixture and continue to cook for another 1-2 minutes, stirring constantly, until the mixture thickens slightly. Remove from heat and pour the fruit into an ovenproof dish (approx. 20x20cm or similar).

**Make Crumble Topping:** In a large bowl, add the plain flour. Add the cold butter cubes. Using your fingertips, rub the butter into the flour until the mixture resembles coarse breadcrumbs. Add Sugar & Oats: Stir in the demerara sugar, rolled oats (if using), and ground cinnamon (if using) into the crumble mixture.

**Assemble Crumble:** Sprinkle the crumble topping evenly over the fruit in the ovenproof dish.

**Bake:** Place the dish in a preheated oven at 180°C (160°C fan/Gas Mark 4) for 30-35 minutes, or until the topping is golden brown and the fruit filling is bubbling.

**Serve:** Let the crumble stand for a few minutes before serving. It's delicious warm with custard, vanilla ice cream, or a dollop of cream.

**Tips for Variations:**

**Other September Fruits:** You can easily substitute or add other seasonal fruits like apples, pears, or even a mix of all three. Adjust sugar to your taste.

**Nutty Topping:** Add a handful of chopped almonds or pecans to the crumble mixture for extra flavour and texture.

**Ginger Kick:** A small amount of grated fresh ginger or ½ tsp ground ginger can be added to the fruit filling for a warming spice.

Quilter  
Financial Advisers

Your local financial adviser

As a qualified financial adviser, I can support you with:

- Retirement planning
- Tax efficiency
- Savings and investments
- Protection
- Wealth management



Scan to view my adviser profile and book your **FREE** initial financial consultation.

Steve Bown

T: 07956 973 045

Approver Quilter Financial Services Limited & Quilter Mortgage Planning Limited. 10 June 2024.

Q24\_0626/November 2024



**Special limited offer: 10% off online prices until end of September**

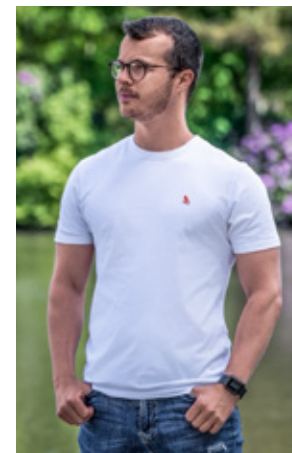
**Quality organic supima cotton T-shirts made in England**

**Men's short sleeved T-shirts in blue and white**

**Men's long sleeved T-shirts in blue**

**Women's short sleeved T-shirts in white**

**Socks in blue**



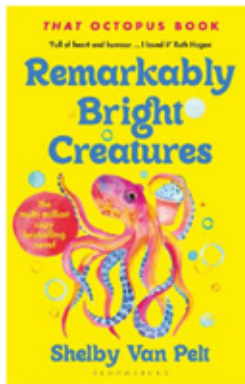
[www.ottoandjj.co.uk](http://www.ottoandjj.co.uk)

To get your discount use code: TFOAJ

# Book Review

## Incredibly Bright Creatures by Shelby Van Pelt

I wasn't sure if I'd like Shelby Van Pelt's debut novel, "Incredibly Bright Creatures", as I was put off by the thought of an animated octopus telling a story. But I was pleasantly surprised by the blend of humour and intrigue, which made for an interesting storyline.



Our two protagonists are Tova Sullivan, a seventy-year-old widow who has a night shift cleaning job at the Sowell Bay Aquarium, and Marcellus, a giant Pacific octopus, a rescued aquarium resident, whose intellect and observation of human behaviour had me chuckling as I read.

Marcellus narrates only a few chapters but remains a central character. He is witty and insightful, providing a poignant and often funny outlook upon the characters' lives and struggles. His secret mission is to help Tova uncover the truth about her

son's disappearance – this is the heart of the novel's mystery.

I enjoyed the cast of characters, each endearing and vulnerable. Relationships are made and unexpected bonds formed; the one between Tova and Marcellus was beautifully portrayed.

The reader makes the connection between two characters before Tova does, but this doesn't take away the compelling, gentle reveal. The novel explores grief, connection, finding purpose later in life and the strength behind unlikely friendships; also, the intelligence that can be found in the natural world. I found the book an uplifting read which left me smiling and with a newfound respect for octopuses.

Vanessa McMurtrie



### 5 Fun Facts About Octopuses

- Octopuses have three hearts that pump blue, copper-based blood.
  - An octopus is a mollusc, likes clams and shells; however, through evolution, it lost its shell.
  - Octopuses are found in all oceans at every depth.
  - All octopuses are venomous. Their venom contains enzymes that help digest their food.
  - Octopuses can remember and recognize individual humans.
- (source:factretriever.com)

# TFM GROUP LLC



## Expert Building Solutions: Drylining, Roofing, Groundworks & Landscaping

Your Trusted Partner for Comprehensive  
Construction & Exterior Transformations

Call us on 07775 954498 email: [contact@tfmgroupllc.com](mailto:contact@tfmgroupllc.com)  
web: <https://tfmgroupllc.com>

Get a  
FREE  
quote  
today

3 Tolldene Cl, Knaphill, Woking, GU21 2NX

Providing  
trusted nursing  
care, tailored  
to you

NEW NURSING  
SUITE NOW OPEN



Discover the peace of mind that comes with trusted nursing care tailored to your individual needs. Our dedicated team of nurses are committed to providing personalised care in a warm and supportive environment, ensuring your wellbeing and comfort every step of the way. Experience the difference at Horsell Lodge Care Home.

Call freephone **0808 223 5352** | Find us online **caringhomes.org**

Kettlewell Hill, Woking, Surrey, GU21 4JA  
This rating is correct at time of print

BOOK A  
VISIT TODAY



Horsell Lodge  
CARING HOMES



**TRIDENT HONDA PROUDLY PRESENTS  
THE LATEST HONDA SUV RANGE**



Honda e:Ny1 - e:BEV



Honda HR-V e:HEV



Honda ZR-V e:HEV



Honda CR-V e:PHEV

**COME IN AND VIEW THE LATEST HONDA RANGE OF VEHICLES**

- Family business established in 1963, celebrating 60 years of quality service
- Full sales, service & parts facilities including bodyshop repairs
- All makes servicing, MOTs, Tyres, While-U-Wait servicing
- Honda Service Price Match Promise
- 24 hour Filling Station & Convenience store



**Trident Honda**  
Guildford Road  
Ottershaw  
Surrey, KT16 0NZ

**01932 874411**  
**ottershaw@tridenthonda.co.uk**  
**www.tridenthonda.co.uk**





## BOOKKEEPING AND PAYROLL EXPERTS

- **Bookkeeping** – day to day entry, VAT returns, management accounts, reconciliations
- **Payroll** – weekly and monthly processing, starters, leavers, RTI, P60s
- **Auto Enrolment**

We want to take away the headache of bookkeeping and payroll so you can concentrate on the more important aspects of running your business.

Please contact us for a free consultation to discuss how we can help support your business.

**Tel: 01483 755311**

Email: [mail@pabsco.co.uk](mailto:mail@pabsco.co.uk)

Web: [www.pabsco.co.uk](http://www.pabsco.co.uk)

Sundial House, High Street, Horsell, Woking, Surrey, GU21 4SU

SURREY • BERKSHIRE • HAMPSHIRE • LONDON

**pabsco**  
PAYROLL & BOOKKEEPING SUPPORT

**FRAZERS**  
SURVEYORS

Your Local Chartered Surveyors

RICS HomeBuyer Reports

Building Surveys

Valuations

All Types Of Buildings

Over 30 Years Experience

Call Or Visit Us Today For A Competitive Quote

Frazers Surveyors Ltd  
Thornash House, 37 High St, Horsell, GU21 4UR  
T: 01483 730909 E: [surveying@frazers.co.uk](mailto:surveying@frazers.co.uk)  
[www.frazers.co.uk](http://www.frazers.co.uk)



### CONVEYANCING AND PROBATE PRACTITIONERS

We offer the below services to our clients, conducted in a friendly, professional, supportive manner. We are excellent communicators using both technology and traditional standards of service to suit our clients.

- PROPERTY LAW SPECIALISTS
- SELLING AND/OR BUYING A PROPERTY
- REMORTGAGES • TRANSFERS • PROBATE
- WILLS • DECLARATION OF TRUSTS
- LASTING POWERS OF ATTORNEY
- COMMISSIONERS FOR OATHS

Please telephone or email for a free estimate or for further information.

Business Hours: 9am to 5.30pm Monday to Friday  
Free Parking

T: 01483 485700 F: 01483 485701

E: [info@lyonsandcompany.co.uk](mailto:info@lyonsandcompany.co.uk)

6 Anchor Crescent, Knaphill, Woking, Surrey GU21 2PD

# Woking Funeral Service



**Proudly serving your local community since 1880**

Woking Funeral Service are here to support and guide you. We offer a friendly, professional service to families.

**Horsell**

**01483 355 752**

78 High Street  
GU21 4SZ

Call or visit our team in branch. Rachel Chambers and Debby Loughman are on hand to offer their experience and local knowledge to support you with all your bereavement needs.

- 24-hour service
- Bereavement advice
- Transparent pricing
- Private chapel of rest
- Floral tributes
- Memorial masonry
- Home visits
- Prepaid funeral plans
- International repatriation

**We are here to help 24 hours a day.**

[www.wokingfunerals.co.uk](http://www.wokingfunerals.co.uk)





Book a tour



Fee caps & discounts available

## Halstead St Andrew's School

An independent co-ed school for ages 2-16 in Woking, Surrey

Book a personal tour of our school by scanning the QR code or emailing our Admissions Team  
admissions@hsaschool.co.uk

[www.hsaschool.co.uk](http://www.hsaschool.co.uk) | 01483 760943

Follow us @halsteadstandrews

## ELECTRICIAN/HOME MAINTENANCE



Sockets, lights to full re-wires. Painting, tiling, and plaster repairs etc.

No job too small. Reliable.

Tim Dear  
01483 762967  
or 07973 777332

## PENNY & HAYTER OPTICIANS

- Independent Opticians
- Personalized service
- Warm & friendly approach
- Highest standards of eyecare
- Latest equipment
- A wide selection of frames, glasses lenses and contact lenses



To start your eye care journey, call Penny & Hayter Opticians on 01483 475205, or visit: [www.pennyandhayter.co.uk](http://www.pennyandhayter.co.uk)

3 Albion Parade, High Street, Knaphill Woking, Surrey, GU21 2PS  
info@pennyandhayter.co.uk

## Violin Teaching

Grading exams / conservatoire entrance. DBS checked and ISM registered

Graduate: Royal College of Music and University of Oxford

- Based in Woking
- Experience with all ages
- Face-to-face and Zoom
- Double vaccinated



### CONTACT

Emmanuel Bach: 07903 582483  
Emmanuel.F.Bach@gmail.com



# Motormech



Vehicle Service & Repairs to all leading makes

**FREE BRAKE AND BATTERY CHECK\*\***

**MOT TEST £39.00**

**COMPLETE SERVICE\***  
**£179.00**  
INC. VAT

**STANDARD SERVICE\***  
**£99.00**  
INC. VAT

**COMPLETE SERVICE & MOT\***  
**£199.00**  
INC. VAT

**STANDARD SERVICE & MOT\***  
**£119.00**  
INC. VAT

Our Service Team will be happy to provide you a quotation and make a booking. You can also book online. All makes and models.  
\* Terms & Conditions apply. We will report to you if the spark plugs require changing.  
\* We'll collect and deliver your vehicle **Free of charge** within a 5 mile radius of GU2 7YB. The Complete and Standard service offer includes all makes and models up to engine size 2000cc. Additional surcharges will apply for larger engine sizes.  
\*\* Free Brake and Battery Check with Complete Service and Complete Service with MOT

**BOOK ONLINE: [www.motormechguildford.co.uk](http://www.motormechguildford.co.uk)**

**OR CALL: 01483 502671**

Unit 1H, Cathedral Hill Industrial Estate,  
Guildford, Surrey GU2 7YB



# WHY SHOULD YOU CHOOSE SEYMOURS?



## Partner Owned & Run

Because we're Partner run, the owner of the business will be personally involved in your sale.



## 20 Seymours Offices

All the care and attention of a local independent with the vast selling power of our network.



## Knowledgeable Local Staff

Our staff live nearby to offer unrivalled local knowledge and expertise when you move.



## Unrivalled Marketing

Attract the best buyers with high quality marketing photos, videos, brochures and social media.



## National & London Buyers

Get exclusive access to buyers from 800 Guild member agents across the UK and London.



## Property Finder Services

Sell with Seymours and we'll prioritise your search to find your dream home.



## Supporter of Local Charities

Enjoy peace of mind working with an agent that supports local schools and charities.



## No.1 In Surrey

We're proud to help more people move in our local community than any of our competitors.

If you're thinking of selling, please call us for a **free market appraisal of your property.**



**Lloyd Moss**  
Partner



**James Taylor**  
Partner

**Seymours Horsell**

01483 755222 | [sales@seymours-horsell.co.uk](mailto:sales@seymours-horsell.co.uk)



# Seymours