

# Horsell Matters



**The Village Magazine from your Parish Church  
April – May 2022**

# HORSELL DIRECTORY

<b>St Mary's Church</b>	Website: <a href="http://www.stmarys-horsell.org.uk">www.stmarys-horsell.org.uk</a>	
	Baptisms, Weddings or Funerals	772134
<b>Parish Office open:</b>	Tuesday 9am-4pm, Wednesday & Friday 9am-1.00pm	
	<a href="mailto:stmaryshorsell@btinternet.com">stmaryshorsell@btinternet.com</a>	772134
<b>Vicar</b>	Rev'd Dmitry Lutsenko	755618
	<a href="mailto:vicar@stmarys-horsell.org.uk">vicar@stmarys-horsell.org.uk</a>	
<b>Church Wardens</b>	Michael Couper	770920
	Brian Sheriff	474975
Treasurer	David Leach	823439
<b>Cathedral Link</b>	Gill Saville	773799
<b>Pastoral Assistant</b>	Margaret Johnson	762481
	Hilary Mills	772952
	Coral Colclough	747481
<b>JAM (Jesus and Me)</b>	10am most Sundays	772134
<b>Babies and Toddlers</b>	Angela Murphy	832943
	St Andrew's Room, Tues 9.30am to 11.30am, term time	
<b>Twinkle Tots</b>	Mike Couper, St. Andrew's Room	772134
	Thursdays 9.30 to 11.30, term time	
<b>Bellringers</b>	Avril Blagbrough Tuesday evening practice— occasional. Please check	767421
<b>Trinity Methodist Church</b>	<a href="mailto:office@trinitywoking.org.uk">office@trinitywoking.org.uk</a>	730754
<b>Horsell Evangelical Church</b>	Revd Andrew Bents	822259
<b>To Book: Village Hall</b>	Paul Bowyer	764047
<b>Parish Institute</b>	<a href="http://www.horsell-parish-institute.org.uk">www.horsell-parish-institute.org.uk</a>	772134
<b>Horsell Village School</b>	Infants Head Teacher - Mrs Reeve	714804
<b>Horsell C of E School</b>	Junior Head Teacher—Mrs C Wand	761531
<b>Woking High School</b>	Head Teacher - Mrs M Walter	888447
<b>Horsell Care</b>	Helpline	730740
<b>Residents Association</b>	Alan Taylor <a href="mailto:ajrolyat@gmail.com">ajrolyat@gmail.com</a>	
<b>Scouts, Beavers, Cubs</b>	Ali Stubbs 07734 424568 <a href="mailto:alistubbs59@googlemail.com">alistubbs59@googlemail.com</a>	
<b>Explorer Scouts (14-18 Yrs)</b>	Brian Pinto	480904
<b>Guides &amp; Brownies</b>	<a href="http://www.girlguiding.org.uk/information-for-parents/register-your-daughter/">www.girlguiding.org.uk/information-for-parents/register-your-daughter/</a>	
<b>WI Horsell Afternoon</b>	Alison Evans-Wyatt 765570 <a href="mailto:amevans705@gmail.com">amevans705@gmail.com</a>	
	Meets on 1 <sup>st</sup> Thursday at 1.45pm in the Village Hall	
<b>WI Horsell Evening</b>	Mrs Sheila Tickner	760783
	Meets on 4 <sup>th</sup> Tuesday at 8.00pm in the Village Hall	
<b>Woking Police Station</b>	dial 101 from mobile or landline	

Front Cover Drawing by Hugh Thomson in *Highways and Byways in Surrey*, Eric Parker, Macmillan, 1909

# Easter 2022



In order for the plant to grow, the seed must first die in the depth of the soil. Although the large Atlantic Cedar Tree at the front of the church will need to be taken down (die), the memories, pictures and legacy of it will live and stay with us for years. We will plant a new tree in its place to remember the old tree and to celebrate the Queen's platinum jubilee.

## To live we must die.

On Good Friday the disciples of Jesus must have thought that their hopes died on the cross with Jesus. Someone, who they thought was the God-sent Messiah, breathed his last breath and his spirit left the broken body nailed to the cross. The next two days must have been an agony for the disciples, but wait... a miracle happened on Easter Sunday. What appeared dead and lifeless came back to life by the power of the Holy Spirit, signalling the victory and triumph over sin and death. Christ's death and resurrection was part of God's plan for the broken and sinful humanity to be reunited with our Heavenly Maker. Only through believing in Jesus can one

have a living and lasting relationship with God the Father.

## To live we must die.

The Apostle Paul writes in his Epistle to the Romans 6:1-14, that we need to die to sin in Christ in order to live again, meaning leaving behind our sinful lives - 'do not let sin reign in your mortal body so you obey its evil desires' - and living new lives in Christ - 'but rather offer yourselves to God as those who were brought from death to life and offer every part of yourselves.'

To live we must die. What does this phrase mean for you this Easter time?

Revd Dmitry Lutsenko  
*Vicar of St Mary's*

## ST MARY'S CHURCH REGISTERS

### Burials & Cremations:

*We offer our sympathy to the families and friends of those who have died:*

Nellie Bailey   Rosie Bates   Rodney Braisby   Anne McLeod  
Joan Worsfold   David Wyatt

## ST MARY'S CHURCH DIARY APRIL 2022

### APRIL 2022

Fri 1 <sup>st</sup>	10am-12noon	Pop In Coffee
Sun 3 <sup>rd</sup>	8.00am	Holy Communion (CW)
	10.00am	Morning Worship
	6.30pm	Meditation in Music
Tues 5 <sup>th</sup>	9.30am-11.30am	NO Baby & Toddler Group
	4.00pm	Prayer at 4pm – at home
Wed 6 <sup>th</sup>	11.00am-4pm	Private Prayer
	7.00pm	Lent Course Session 5
Thurs 7 <sup>th</sup>	9.30am-11am	NO Twinkle Tots
Fri 8 <sup>th</sup>	10am-12noon	Pop In Coffee
Sun 10 <sup>th</sup>	8.00am	Holy Communion (BCP)
	10.00am	Palm Sunday Parish Communion
	4.00pm	Messy Church
Tues 12 <sup>th</sup>	9.30am-11.30am	NO Baby & Toddler Group
	4.00pm	Prayer at 4pm – at home
Wed 13 <sup>th</sup>	11.00am-4pm	Private Prayer
Thurs 14 <sup>th</sup>	9.30am-11am	NO Twinkle Tots
	8.00pm	Maundy Thursday Communion Service
Fri 15 <sup>th</sup>	9.30am	Good Friday Family Service
	10.30am-12noon	Pop In Coffee
Sat 16 <sup>th</sup>	8.00pm	Easter Eve Service
Sun 17 <sup>th</sup>	8.30am	Easter Breakfast followed by
	9.30am	Easter Day Family Communion Service
Tues 19 <sup>th</sup>	9.30am-11.30am	Baby & Toddler Group
	4.00pm	Prayer at 4pm – at home
Wed 20 <sup>th</sup>	11.00am-4pm	Private Prayer
Thurs 21 <sup>st</sup>	9.30am-11am	Twinkle Tots
Fri 22 <sup>nd</sup>	9am-12noon	Pop In Coffee
Sun 24 <sup>th</sup>	8.00am	Holy Communion (BCP)
	10.00am	Parish Communion
	6.30pm	Prayer & Peaceful Praise
Tues 26 <sup>th</sup>	9.30am-11.30am	Baby & Toddler Group
	4.00pm	Prayer at 4pm – at home
Wed 27 <sup>th</sup>	11am-4pm	Private Prayer
Thurs 28 <sup>th</sup>	9.30am-11am	Twinkle Tots
Fri 29 <sup>th</sup>	9am-12noon	Pop In Coffee

*All St Mary's Church Diary correct at time of going to press*  
*Please do check the website before you turn up for any of our Christmas Services*  
**For further details please look at our website: [www.stmarys-horsell.org.uk](http://www.stmarys-horsell.org.uk)**

## ST MARY'S CHURCH DIARY MAY – JUNE 2022

### MAY 2022

Sun 1 <sup>st</sup>	8.00am	Holy Communion Service (CW)
	10.00am	Morning Worship
Tues 3 <sup>rd</sup>	9.30am-11.30am	Baby & Toddler Group
	4.00pm	Prayer at 4pm – at home
Wed 4 <sup>th</sup>	11.00am	Holy Communion Service
	11.00am-4pm	Private Prayer
	8.00pm	Engle Room House of Prayer
Thurs 5 <sup>th</sup>	9.30am-11am	Twinkle Tots
Fri 6 <sup>th</sup>	9am-12noon	Pop in Coffee
Sun 8 <sup>th</sup>	8.00am	Holy Communion Service (BCP)
	10.00am	Parish Communion
	6.30pm	Contemplative Meditation
Mon 9 <sup>th</sup>	8.00pm	PCC Meeting
Tues 10 <sup>th</sup>	9.30am-11.30am	Baby & Toddler Group
	4.00pm	Prayer at 4pm – at home
Wed 11 <sup>th</sup>	11.00am-4pm	Private Prayer
Thurs 12 <sup>th</sup>	9.30am-11am	Twinkle Tots
Fri 13 <sup>th</sup>	9am-12noon	Pop In Coffee
Sun 15 <sup>th</sup>	8.00am	Holy Communion (CW)
	10.00am	Parish Communion
	4.00pm	Messy Church
Tues 17 <sup>th</sup>	9.30am-11.30am	Baby & Toddler Group
	4.00pm	Prayer at 4pm – at home
Wed 18 <sup>th</sup>	11.00am-4pm	Private Prayer
Thurs 19 <sup>th</sup>	9.30am-11am	Twinkle Tots
Fri 20 <sup>th</sup>	9am-12noon	Pop In Coffee
Sun 22 <sup>nd</sup>	8.00am	Holy Communion (BCP)
	10.00am	Parish Communion
	6.30pm	Prayer & Peaceful Praise
Tues 24 <sup>th</sup>	9.30am-11.30am	Baby & Toddler Group
	4.00pm	Prayer at 4pm – at home
Wed 25 <sup>th</sup>	11.00am-4pm	Private Prayer
Thurs 26 <sup>th</sup>	9.30am-11am	Twinkle Tots
Fri 27 <sup>th</sup>	9am-12noon	Pop-in-Coffee
Sun 29 <sup>th</sup>	8.00am	Holy Communion (BCP)
	10.00am	Parish Communion
Tues 31 <sup>st</sup>	9.30am-11.30am	NO Baby & Toddler Group

### JUNE 2022

Wed 1 <sup>st</sup>	11.00am	Holy Communion Service
	11.00am-4pm	Private Prayer
Thurs 2 <sup>nd</sup>	9.30am-11am	NO Twinkle Tots
Fri 4 <sup>th</sup>	10am-12noon	Pop In Coffee
Sun 5 <sup>th</sup>	8.00am	Holy Communion (CW)
	10.00am	Morning Worship

# Churchyard Cat



The alarming rumour reached me as the first snowdrops opened in my churchyard.

The big cedar tree in front of the church was to be cut down. All that shelter from winter rain, all that summer shade was going. And it was true. I saw the tree fellers arrive, with their enormous crane, their chain saws, their hard hats. And then they tested the strength of the wind and went away again. 'Churchyard cedar, 1; Tree fellers, 0,' I said to myself.

But it is bound to happen, I know. This radical alteration to my environment will be made.

I must be reasonable. A rotten tree, its branches liable to fall on passing traffic, persons, or cats just can't be preserved. However, I do wonder about what other

changes cutting down one of my trees will make. I can tell you one thing it won't do. It won't take away my lofty perch. I've never climbed the cedar – too tall, altogether too massive. I'm a cat, not a squirrel, and I've appreciated the tree at ground level.

But what about the churchyard wild life, those insects the tree sustained, the birds that rested in its canopy, the squirrels? Shall I notice a difference in the numbers of birds, or in the kinds of birds in my churchyard once the landmark tree has gone?

I'm assured that a new tree will be planted to replace the old one. But trees take time to grow and you can't recreate 100 years of habitat all at once. I shall keep an eye on what uses the new tree. I may climb it myself, in the interests of science.

**The 1:1 Diet with Olya**

My clients have amazing weight loss results

**Tracy**  
lost 5 stone in 8 months

**Kerry**  
lost 1 stone in 4 weeks

And many, many more...

Simple plan. Proven results. Confidential consultations.

**Get in touch to start Your transformation**

**07875 777 296**

Instagram @olya.one2onediet  
www.one2onediet.com/Olya

**THE 1:1 DIET**

# BRF Celebrates its Centenary



This year, the Bible Reading Fellowship (BRF) celebrates its centenary and the growth and reach of its work over those 100 years has been extraordinary. It all began in 1922 when Revd. Leslie Mannering in Brixton began producing Bible reading notes for his congregation. Bible reading notes remain a key aspect of BRF's work, but, over the years, the BRF family has grown. It has been the catalyst and nurturer of some very significant Christian and church initiatives, particularly over the past twenty years. Messy Church, which started in 2004 and which we began at St. Mary's four years ago, is now widely regarded numerically as the most significant fresh expression of church in the UK.

BRF is also the home for Anna Chaplaincy which resources and encourages a chaplaincy to support older people. The number of Anna Chaplains in the UK is increasing rapidly.

And that's not all: there is also a large Parenting for Faith ministry which helps parents teach their children about faith and encounter Jesus' love for themselves, as well as Living Faith which produces a wide range of books and resources to support the spiritual development of all ages.

St Mary's is proud to support BRF and has done so for many years.

Jennifer Richards, BRF Local Church Champion



**Computer Repairs Upgrades & Advice**

Call Mike  
**07505 100386**

We are Open and able to work using Covid safe practices

- Computer Crashing/Virus?
- Problem with iPad or Tablet?
- Computer Running Slow?
- Supporting Home and Office
- Help with Technical problem

Apple, Microsoft, iPad, Tablet, Windows, Linux, Internet, Networking, Broadband, Wireless LAN, Raspberry Pi, Software, Hardware

Office: 01483 830200  
Email: mike.sheldon@thecomputervan.co.uk  
Web: www.thecomputervan.co.uk

LEARNING TO BE  
**OURSELVES**  
HALSTEAD GIRLS

**CONTACT US TO ARRANGE YOUR VISIT**

HALSTEAD-SCHOOL.ORG.UK  
**01483 772682**  
LESS THAN 1 MILE FROM WOKING STATION

**HALSTEAD**  
HALSTEAD PREPARATORY SCHOOL  
FOR GIRLS AGED 2-11 YEARS  
WOKING

# Jubilee Weekend

## Let's celebrate our Queen's Platinum Jubilee on Sunday 5th June

This is a once in a lifetime event! Let's build on the neighbourliness which grew up during the lockdowns and have fun and make sure that everyone is invited to the party. The Queen herself wants us all to celebrate with the "Big Lunch".

What is Horsell planning to do? The main two events on Sunday are Jubilee "Big Lunch" street parties and the Jubilee "Picnic on the Green".

### Jubilee "Big Lunch" Street and garden parties

Organise your own "Big Lunch" street party or party in the garden. Get all your neighbours to join in. If you want to close your street, contact WBC on their website: <https://www.woking.gov.uk/community/street-parties> and give details for your street closure. You must do this as soon as possible to be sure of getting permission!

### Jubilee "Picnic on the Green" Sunday afternoon, 3pm to 7 pm

There will be live music on the green in front of The Cricketers, and a fancy dress parade of Monarchs. There will be games for the kids, ice cream and a big Jubilee cake. See page X



Get together with friends and neighbours to make plans and bunting and take lots of photos on the day. Check the internet for the Queen's Platinum Jubilee for more ideas and street party information packs.

Let's get cracking for this cracker of a day. For further information and to volunteer help contact;

**secondthursdayclub@  
horsellresidents.com**

Jubilee Weekend



# Jubilee Picnic on The Green



**3pm - 7pm on Sunday 5th June**

**Celebrate the Queen's Platinum Jubilee**

**on**

**The Green at The Cricketers**

*Bring your own picnic, enjoy live music, games and wear your monarch outfit for the Parade of the Monarchs.*

Organised by



For more info go to <https://horsellresidents.com/Home/QE2PlatinumJubilee>



# Coronation Memories



**All children in Runnymede Borough Council were given commemorative mugs. My mother made red, white and blue coronation dresses with a red velvet bow under the neck for my sister and me. We wore them on Coronation Day when we were invited to visit a work colleague of my mother's at Feltham to watch the ceremony on TV.**

*Rosemary*

One of my many great aunts made me a doll dressed in coronation robes which I have treasured. It is still in a showcase in the rumpus room. My own memory is apocryphal; as a rather new baby, I slept throughout, which showed stamina as it was evidently a very raucous embassy celebration. My first embassy party.

*Sue*

My father bought a brand new TV set from Maxwells.

I was given a coronation mug at school but remember it as being made of really cheap pottery.

My family watched the procession through Woking which was headed up by a brand new dust cart that was the pride and joy of Woking Urban District Council.

*Mike*

My parents and I watched on a neighbour's TV, along with the Vicar of Bramley and his wife. With the return of the procession after the service, complete with Queen Salote



of Tonga getting very wet, I set off for Guildford to help the RGS scouts put away chairs which the older people had used to see a very long celebratory procession past the then council

offices (just up Guildford High St from the RGS). Sometime during the celebrations Bramley put on a pageant in Bramley Park which worked together many texts from Shakespeare and contemporaries to make a setting for revelries in

the village in Tudor times.

*Richard*

Like so many people, my father bought a TV for us to see the Coronation. Of course, the picture was in black and white and the TV had a big magnifying lens on it to see the picture better. Neighbours came around and we sat enthralled with the curtains drawn watching the young Queen and the events in London.

*Rosemary*

On Wednesday 6th February 1952 whilst playing in the school grounds, the whole school were called together to line up outside and then we were told the King had died, the day and date are most memorable as this was my 10th birthday. I do remember going to a neighbour to watch on their television the Coronation. I think this was the first time I had a mixed fresh fruit salad, containing fruits I had never seen or tasted before.

*Penny*



## Sythwood Primary and Nursery School



# Premises for Hire

Sythwood School have premises available for regular bookings, particularly suitable for sports clubs. Facilities include school hall, multi-use games area and field. All at competitive rates, terms and conditions apply.



For further enquiries please contact  
[n.anderson@sythwood.surrey.sch.uk](mailto:n.anderson@sythwood.surrey.sch.uk) or **01483 770063**.

# Seasonal Candles Help Those In Need



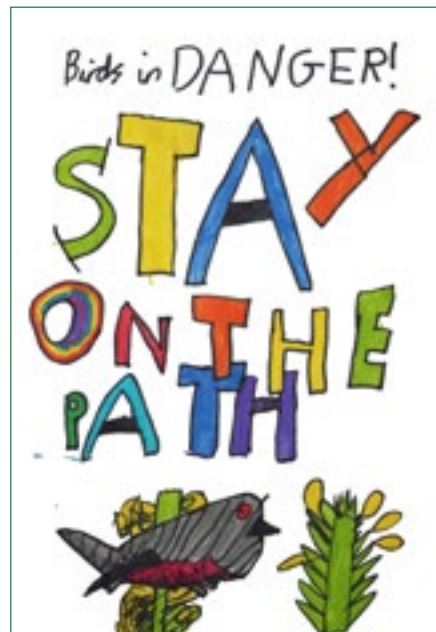
This year, there is a new initiative to raise funds for St. Mary's and for the **Waterways Chaplaincy Hardship Fund**. Candles in various shapes and colours which are made by one of the Waterways Chaplains are now for sale in church. Shapes vary depending on the time of the year, e.g. roses for Mothering Sunday, eggs for Easter, Christmas puddings for Christmas, as well as shapes for all year round such as cones and pillars.



Waterways Chaplains offer support to those who use and live on our waterways and canals. The Waterways Chaplaincy Hardship Fund assists the more vulnerable boat dwellers and can help with the cost of essential items like fuel or gas or help boaters on low income with irregular expenses they cannot afford. For more information, please see [waterwayschaplaincy.org.uk](http://waterwayschaplaincy.org.uk).

# Wildlife

Last year, pupils from Horsell Junior School designed some wonderful posters on the theme of "Protecting ground nesting birds on Horsell Common". They expressed so clearly how vulnerable the ground nesting birds including the Dartford warbler, the nightjar and the woodlark are to disturbance from people, dogs and horses. These very rare and protected species make nests on the ground which are very camouflaged and hard to see. So please, as the poster says, stay on the paths when out enjoying the beauty of Horsell Common."



# Housework or Hiking? No Contest Really!

So, now we're into spring and several months have passed since we perhaps made resolutions for a new year: maybe you participated in Dry January, or set your sights on gaining a new qualification or securing a new job? Every year I have the best of intentions to instil more routine in completing regular housework but let's be honest, there's always something more interesting to do than clean the bathroom! Needless to say, I've likely slipped again as I do every year, as far as chores go. But don't wait until January comes round again to start over, Spring is a time of new beginnings, and as the days get longer, we feel energised and more positive, so set a new goal now – good luck!



I have maintained a goal of keeping fit, motivated by a commitment to undertake my biggest fitness challenge ever. Now, I'm no runner, couch to 5k is not for me. I did lots of PE with Joe in lockdowns and beyond, but an easy way to stay active is simply by walking. We are blessed in Horsell to have beautiful open spaces on our doorstep: Horsell Common, the Basingstoke Canal and Goldsworth Lake. These have become my local training ground, in addition to the vistas of the Surrey Hills only a short drive away. So, what is my challenge I hear you asking. I will be hiking the hills of Dorset on 14th May; 26 miles of the Jurassic Coast from Corfe Castle, up the ridge and east across Ninebarrow Down and into Swanage, then west to Worth Matravers before looping north to Church Knowle, and back up onto the ridge and west to Lulworth, phew!

While completing the distance will be a great personal achievement, my biggest motivation is knowing that every step is raising funds to support Alzheimer's Research UK in their quest to find a treatment for dementia. Dementia is caused by a variety of brain diseases, most commonly Alzheimer's.

My mum was diagnosed with frontotemporal dementia aged only 61. At first there were some changes in her behaviour, acting out of character and suffering mood swings but as time went on her reasoning became ever more impaired and she lost her ability to communicate, losing all speech and language. She sadly passed away only a few months after her 63rd birthday.

Since beginning my fundraising efforts in November (including baking dinosaur cookies and entering a dinosaur themed tree in the Christmas Tree Festival), my promotion of the fantastic work being done by ARUK has opened many conversations and I've found dementia touches the lives of so many people.

If this includes you, you can find support via the ARUK helpline on 0300 111 5 111, email: [infoline@alzheimersresearchuk.org](mailto:infoline@alzheimersresearchuk.org) or visit: [www.alzheimersresearchuk.org/](http://www.alzheimersresearchuk.org/) If you want to read more of my story, follow my training, or donate, please visit: [www.justgiving.com/fundraising/jenny-spencer3](http://www.justgiving.com/fundraising/jenny-spencer3) or scan the QR code.

Thank you,  
Jenny x





## Do you need an Angel in your life?

### Exceptional home care visits from exceptional carers

Most people in need of care would prefer to stay in their own home. Our home care visiting service is carefully tailored to suit you or your loved ones needs. We can help people to retain their independence and stay connected to friends, relatives and pets, safe in their own home where they want to be.

Our caregivers are carefully selected. We find excellent people with the right mix of skills, experience and a true caring nature, so that they can provide consistently superior home care.

We can help with activities ranging from shopping and companionship, to personal care, hospital discharge support and end of life care.

We can visit from one hour each week to every day, for as long as you need us to help with:

- \* Companion & Social Care
- \* Personal Care
- \* Dementia & Alzheimer's Care
- \* Post-Hospital Stay Care
- \* Palliative
- \* End of Life Care



Find out more about how a Visiting Angel can help  
**Call 01483 931 934**

[www.visiting-angels.co.uk/centralsurrey/](http://www.visiting-angels.co.uk/centralsurrey/)  
[CentralSurrey@visiting-angels.co.uk](mailto:CentralSurrey@visiting-angels.co.uk)  
Guildford, Woking, and Surrey Heath Boroughs .



## Kitchen Matters



### Easter Shortbread Cookies

These easy to make cookies contain all the spicy flavours of a hot cross bun. Can be enjoyed plain, or decorated with icing / melted white chocolate.

#### Ingredients

- 150g plain flour
- 50g caster sugar
- 100g butter, chopped into 1cm cubes
- 15g raisins, finely chopped
- 15g mixed peel, finely chopped
- 1 tsp mixed spice

#### Method

Glaze – one lightly beaten egg white with a tbspcaster sugar added.

Heat oven to 170C and line a baking sheet with baking parchment.

Sift flour, sugar and mixed spice into a bowl and add butter.

Using your fingertips, rub butter into the dry ingredients in the bowl and as the mixture starts to come together add the finely chopped raisins and mixed peel.

Knead the mixture to distribute the fruit until the dough comes together in a ball.

Roll out on a floured surface to about ½ cm thickness and cut out with a plain 7cm cutter and place on baking tray. Re-roll dough until all mixture is used...you should have about 12 cookies.

Mix together lightly beaten egg white and sugar and brush over top of cookies.

Bake in the oven for 12-15 mins until firm and pale golden brown. Lift onto a cooling rack with a palette knife.

Decorate, if desired, once completely cool. Store in an airtight container.



### Smoked Salmon Canapes

Many of us will be attending street parties this year and these colourful canapes are a real crowd pleaser. This recipe is from my Melbourne based daughter.

#### Method

Chop beetroot and blend in a food processor with the lemon juice, yoghurt and horseradish until smooth. Taste and season with black pepper/extra horseradish, as necessary.

Chill in the fridge.

Cut smoked salmon into strips.

On each toast disc place a spoonful of beetroot dip, some smoked salmon and a small amount of lumpfish caviar. Garnish with a sprig of dill, if desired.

#### Ingredients

- 250g vacuum-packed beetroot
- Squeeze lemon juice
- 3tbsp natural Greek-style yoghurt
- 2tsp creamed horseradish sauce
- Smoked salmon
- Toast, cut into 4cm round discs
- Lumpfish caviar



**'What's on'**  
 for young people and families at St. Mary's.  
 Your parish church in Horsell  
 April—May

**Sunday Morning All-Age Worship**  
 Lively songs, thought-provoking Bible stories, fun and family fellowship at 10am  
 On the first Sunday of the month  
 3rd April, 1st May, 5th June

  
 A time for children 3+ to learn and Worship together during our 10am Sunday Services  
 Jesus and Me (Every Sunday except when we have All-Age Worship or a Celebratory Service)

**Messy Church**  
**10th April**  
**15th May**  
**4 - 5.30pm**  
 Fun activities for all ages

**Pop In Coffee**  
 Why not drop in for a cuppa,  
  
**Fridays** - School drop off time onwards until Noon  
 (Toys available)

  
**GOOD FRIDAY**  
**9.30am**  
**Family Service**  
**15th April**  
**Followed by**  
 Hot cross buns & Easter Crafts

**Easter Day**  
  
 He is Risen  
**Family Service**  
**Sunday**  
**17th April**  
**9.30am**  
 Cooked Breakfast from 8.30am  
  
 Celebrate Jesus' Resurrection

**Tuesday Morning**  
**Baby and Toddler Group**  
  
 Weekly during term time  
 9.30 to 11.30am  
 Last session of term: 29th March  
 Restarts: 19th April  
 Pop in for a coffee, chat, play, and meet new friends

  
**Thursday Twinkle Tots**  
 Baby and Toddler  
 Weekly in term time 9.30am to 11.00am  
 Last session of term: 31st March  
 Restarts: 21st April  
 Come and make friends  
 Enjoy play, craft, Bible stories and songs

For more details, contact the Church Office on 01483 772134



COLOUR ME IN!



Designed by Alice

## Horsell Matters: Next Edition June/July 2022

Copy to be sent by **Monday 2nd May** by email please to: [stmaryshorsell@btinternet.com](mailto:stmaryshorsell@btinternet.com)

Advertising: please contact: Sales at Knaphill Print, Tel: 01483 474900

Email: [sales@knaphillprint.com](mailto:sales@knaphillprint.com)

*The views expressed by contributors to the magazine are not necessarily those of the PCC of St. Mary's Church. All advertisements are accepted in good faith.*

## Book Shelf

### Terciel and Elinor by Garth Nix

Terciel and Elinor is the sixth and latest addition to Garth Nix's masterly Old Kingdom series. It fits chronologically between Clariel and Sabriel and tells the story of the romance between Sabriel's parents Terciel and Elinor.

When the book opens Terciel is the Abhorsen-in-waiting, learning magic and necromancy from his great aunt, the Abhorsen. She is the latest in a long line whose role is to use necromancy to protect the living and to prevent the Dead returning to life. The Old Kingdom is a land of ancient "Charter" magic. Across the wall is Alcestierre, which bears a striking resemblance to steam age England. A nineteen-year-old Elinor is living a secluded life in a crumbling country house near the wall where her only friends are

her old governess and a former circus performer, now a groom.

Elinor has no idea that she has any connection to the Old Kingdom until an ancient enemy of the Abhorsen line attacks her house in Alcestierre. In one terrible day she loses both home and friends, meets Terciel and his great aunt, and is launched on a path which will take her into the Old Kingdom where she discovers her own magical abilities – she has the mixed blessing of being able to see visions of possible futures. A romance with Terciel develops as he and Elinor combat the Dead who will not stay dead.



- ✿ Lawn Care
- ✿ Tree Care
- ✿ Hedge Cutting
- ✿ Fencing
- ✿ Weeding
- ✿ Feeding
- ✿ Beds
- ✿ Borders
- ✿ Planting
- ✿ Regular Maintenance
- ✿ OAP rates
- ✿ Logs for sale

Does your garden need the personal touch?  
Local gardener now working in your area available to assist with all your garden needs.

For all enquiries please contact Julie on:

**01483 836490 /  
07850 423585**

Approved Contractor for The Woking Garden Project  
& Age Concern Surrey.  
Fully Insured, References available.

REGISTER NOW FOR 2022, 2023 AND BEYOND  
NEXT OPEN MORNING  
Friday 13th May  
9am - 11am

Because your child deserves to be  
**nurtured**  
A supportive community that nurtures individuality and confidence.

Please register your interest online:

W: [www.st-andrews.woking.sch.uk](http://www.st-andrews.woking.sch.uk)

E: [admissions@st-andrews.woking.sch.uk](mailto:admissions@st-andrews.woking.sch.uk)

T: 01483 760943

ST. ANDREW'S



SCHOOL - WOKING  
INDEPENDENT DAY  
SCHOOL FOR GIRLS &  
BOYS AGED 3-13

~ Developing potential for life ~

[@StAndrewsWoking](https://www.instagram.com/StAndrewsWoking) [@standrewsschoolwoking](https://www.facebook.com/standrewsschoolwoking) [@standrewsschoolwoking](https://www.linkedin.com/company/standrewsschoolwoking)



CLASS 4 & 7

# Motormech

Guildford Ltd

CLASS 4 &  
CLASS 7 MOTs

Vehicle Service & Repairs to all leading makes

## ALL MAKES & MODELS ANY AGE OR MILEAGE

### AFFORDABLE CAR SERVICE & MOT PRICES



**COMPLETE SERVICE & MOT\***

**£199.00** inc. VAT

**STANDARD SERVICE & MOT\***

**£119.00** inc. VAT

**MOT TEST**

**£34.99** inc. VAT

**COMPLETE SERVICE\***

**£179.00** inc. VAT

**STANDARD SERVICE\***

**£99.00** inc. VAT

Our Service Team will be happy to provide you a quotation and make a booking. You can also book online. All makes and models. \*Terms & Conditions apply. We will report to you if the spark plugs require changing.

\* We'll collect and deliver your vehicle **FREE OF CHARGE** within a 5 mile radius of GU2 7YB.

The Complete and Standard service offer includes all makes and models up to engine size 2000cc.

Additional surcharges will apply for larger engine sizes.

Unit 1H, Cathedral Hill Estate, Guildford, Surrey GU2 7YB

[www.motormechguildford.co.uk](http://www.motormechguildford.co.uk)

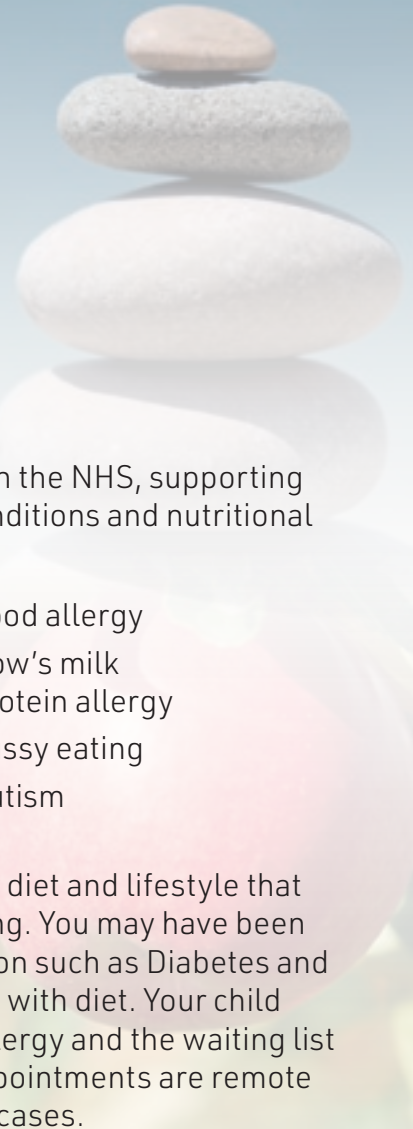
Tel: 01483 502671



Peace of mind for motorists



# RACHEL VALLIS DIETETIC CONSULTANCY



With over 15 years of experience within the NHS, supporting adults and children with a range of conditions and nutritional goals.

- Weight management
- IBS
- Diabetes
- High blood pressure
- Underweight/poor appetite
- Food allergy
- Cow's milk protein allergy
- Fussy eating
- Autism

I can support you with changes in your diet and lifestyle that will improve your health and well-being. You may have been recently diagnosed with a new condition such as Diabetes and want to know how to best manage this with diet. Your child might have been diagnosed with an allergy and the waiting list for an NHS Dietitian is too long. My appointments are remote and available within the week in most cases.

**Please contact to book a 15-minute free, no obligation discovery call.**

**E: [rachelvallis@gmail.com](mailto:rachelvallis@gmail.com)**

**T: 07736285774**

**W: [www.rachelvallis.com](http://www.rachelvallis.com)**



The Association of UK Dietitians



RING A ROSES

# NEW 2022 WORKSHOPS LAUNCHED

- BRING YOUR OWN VASE
- HAND-TIED ARRANGEMENTS
- EASTER WREATH MAKING
- FLOWER CROWNS
- BESPOKE CLASSES



CLASSES COMMENCE MARCH 2022

Ring A Roses, 7 Hermitage Road, St Johns, Woking.

[www.onlinefloristwoking.co.uk](http://www.onlinefloristwoking.co.uk)

Book online or telephone 01483 756579

Cherish their  
memory with a  
Memorial Video



KNAPHILL PRINT CO. LTD.

[www.knaphillprint.com](http://www.knaphillprint.com)

Memories to share  
with those you hold close

Call Jon on 01483 474900 to discuss your requirements

## Woking News & Mail

**BEST FOR  
YOUR  
LOCAL NEWS  
AND SPORT**

**Advertising**


E: [sales@wokingnewsandmail.org](mailto:sales@wokingnewsandmail.org)


T: 01483 802700

**Editorial**

E: [editor@wokingnewsandmail.org](mailto:editor@wokingnewsandmail.org)

T: 01483 375795

 @Woking\_NewsMail

 @wokingnewsmail



[www.wokingnewsandmail.co.uk](http://www.wokingnewsandmail.co.uk)

# Woking Funeral Service



**Proudly serving your local community  
since 1880**

Woking Funeral Service are here to support and guide you.  
We offer a friendly, professional service to families.

**Horsell**

**01483 355 752**

78 High Street  
GU21 4SZ

Opening  
1st March  
2022

Call or visit our team in branch.  
Rachel Chambers and Debby  
Loughman are on hand to offer  
their experience and local  
knowledge to support you with  
all your bereavement needs.

- 24-hour service
- Bereavement advice
- Transparent pricing
- Private chapel of rest
- Floral tributes
- Memorial masonry
- Home visits
- Prepaid funeral plans
- International repatriation

**We are here to help 24 hours a day.**

[www.wokingfunerals.co.uk](http://www.wokingfunerals.co.uk)

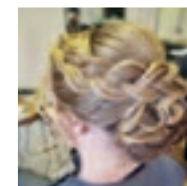
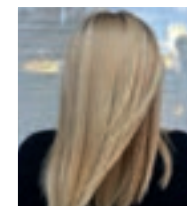


**valerie  
french**

**Are you ready for a new experience?**

**Then look into Valerie French**

- Over 35 years of experience
- Current regular training
- Free Consultations
- 5\* Rating Good Salon Guide
- Hair & make up specialists for all occasions
- Unisex hair cutting
- L'Oreal hair treatments
- L'Oreal and TIGI products
- Special Offers
- Heating/Air con



t: 01483 767214

[valeriefrenchhairsalon@gmail.com](mailto:valeriefrenchhairsalon@gmail.com)

**Good Salon Guide**  
7 Anchor Crescent, Knaphill, Woking, GU21 2PD



**20% off colour to all  
new clients on a Tuesday**

**Senior and student  
discount 10% off**

*\*Please bring this advert with you to take advantage of the offers above*



  
**INSPIRE KITCHENS**

*Creating the heart of the home*

48, HIGH STREET, KNAPHILL, GU21 2PY  
 01483 472814



\* Does not include installation T's & C's apply

# Alan Greenwood & Sons

## Independent Family Funeral Directors



*A Traditional Family Owned Local Company  
 Proud to Serve and Support the Community  
 Latest Jaguar or Mercedes Hearses and Limousines  
 Home visit arrangements  
 Pre-paid Funeral Plans and Memorials  
 Caring and Compassionate 24 hour Service*



*It is our policy to price match any written quote or estimate, to enable you to choose your Funeral Director by personal preference rather than funeral costs*

14 Guildford Road  
**Bagshot**  
 GU19 5JH  
**01276 473 707**

Mimbridge Garden Estate  
 Station Road  
**Chobham**  
 GU24 8AR  
**01276 858363**

66 Send Road  
**Send**  
 Woking  
 GU23 7EU  
**01483 210 222**

1 Anchor Hill  
**Knaphill**  
 GU23 7EU  
**01483 487 889**

*Please visit our website for full details of our services and to view all our local obituaries*

[www.alangreenwoodfunerals.com](http://www.alangreenwoodfunerals.com)

**FRAZERS**  
 SURVEYORS

Your Local Chartered Surveyors

RICS HomeBuyer Reports

Building Surveys

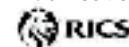
Valuations

All Types Of Buildings

Over 30 Years Experience

Call Or Visit Us Today For A  
 Competitive Quote

Frazers Surveyors Ltd  
 Thornash House, 37 High St, Horsell, GU21 4UR  
 T: 01483 730909 E: [surveying@frazers.co.uk](mailto:surveying@frazers.co.uk)  
[www.frazers.co.uk](http://www.frazers.co.uk)



## Yoga with Julie

A Hatha style class where we connect with the breath, creating space in the body and mind. **Suitable for ALL levels**

Benefits of Yoga include increased flexibility, builds strength, energises, provides relaxation and helps to quieten the mind.

**Bring a bottle of water, a mat and leave the rest to me.  
 Limited mats available to hire at £1 per class.**

**Venue:** Trinity Methodist Church,  
 Brewery Road, Woking

**When:** Thursdays

**Time:** 9:30 am – 10:30 am

**Cost:** £40 for 4 consecutive weeks  
 or £11 per drop in.



**Contact: Julie 07850 423585**



Home Improvements

Checkatrade.com  
Where reputation matters



PVC • Aluminium • Timber

Windows • Doors • Roof Lanterns • Bi-Folds

Orangeries • Garden Rooms • Conservatories

01483 727 474 | sales@krbltd.com

109 High Street | Horsell | Surrey | GU21 4SY

76 High Street | Old Woking | Surrey | GU22 9LN

# INSTYLE TILES

## SALE NOW ON



16A Lower Guildford Road, Knaphill, Woking GU21 2EG  
www.instyle-tiles.co.uk Tel: 01483941249

# SALE NOW ON

at your local independent electrical retailer

Price Match Guarantee | Super Service | Expert Knowledge | Contact-Free Delivery



## 55cm Frost Free Fridge Freezer

KG27NWFAG



- 171 / 84 litres capacity
- Fridge: 3 shelves and 1 salad bin
- Freezer: 4 transparent drawers
- Dimensions: H182 x W55 x D55cm

Only **£439.00** | 2 Year Warranty  
F Energy Rating



## 1400 Spin 7kg Washing Machine

WAN28081GB



- EcoSilence drive with 10 year parts
- 15 programmes inc. delay start
- LED display, reload function
- Dimensions: 84.8 x W59.8 x D59cm

Only **£379.00** | 2 Year Warranty  
D Energy Rating



YOUR LOCAL DOMESTIC APPLIANCE SUPERSTORE  
Knaphill • Guildford • Ashted • Bookham • Epsom  
01483 475000  
Buy online at [rsmdomesticappliances.com](http://rsmdomesticappliances.com)

Terms & Conditions apply. Some products sold as an agent for Euronics Limited. All rights reserved. All offers are subject to availability while stocks last. Delivery & Installation charges may apply. Exclusions & Radius Apply. Prices correct at the time of print but can be subject to change. See in store for full details. Images for illustration purposes only. Copyright Euronics 2020. Savings compared to a higher price charged for 7 days. Savings on selected models only.



## BOOKKEEPING AND PAYROLL EXPERTS

- **Bookkeeping** – day to day entry, VAT returns, management accounts, reconciliations
- **Payroll** – weekly and monthly processing, starters, leavers, RTI, P60s
- **Auto Enrolment**

We want to take away the headache of bookkeeping and payroll so you can concentrate on the more important aspects of running your business.

Please contact us for a free consultation to discuss how we can help support your business.

**Tel: 01483 755311**

Email: [mail@pabsco.co.uk](mailto:mail@pabsco.co.uk)

Web: [www.pabsco.co.uk](http://www.pabsco.co.uk)

Sundial House, High Street, Horsell, Woking, Surrey, GU21 4SU

SURREY • BERKSHIRE • HAMPSHIRE • LONDON

**pabsco**  
PAYROLL & BOOKKEEPING SUPPORT

## Sophie Sews

CURTAINS | BLINDS | INTERIORS

We are a small local company that creates bespoke curtains and blinds made-to-measure in Woking and Surrey. We also make a range of co-ordinating soft furnishings to complement your made-to-order curtains and blinds, including cushions and upholstery.

We offer a bespoke and individual service where we measure, advise, make and fit all our work. We aim to spend time with you to build a picture of your aspirations for your home, thereby reducing the rather daunting task of choosing styles and fabrics.

*In short, we listen, we design, we create and we fit. That's Sophie Sews.*

76 High Street, Horsell GU21 4SZ  
01483 598056  
[sophie@sophiesews.com](mailto:sophie@sophiesews.com)  
[www.sophiesews.com](http://www.sophiesews.com)



## CONVEYANCING AND PROBATE PRACTITIONERS

We offer the below services to our clients, conducted in a friendly, professional, supportive manner. We are excellent communicators using both technology and traditional standards of service to suit our clients.

- PROPERTY LAW SPECIALISTS
- SELLING AND/OR BUYING A PROPERTY
- REMORTGAGES • TRANSFERS • PROBATE
- WILLS • DECLARATION OF TRUSTS
- LASTING POWERS OF ATTORNEY
- COMMISSIONERS FOR OATHS

Please telephone or email for a free estimate or for further information.

Business Hours: 9am to 5.30pm Monday to Friday  
Free Parking

T: 01483 485700 F: 01483 485701

E: [info@lyonsandcompany.co.uk](mailto:info@lyonsandcompany.co.uk)

6 Anchor Crescent, Knaphill, Woking, Surrey GU21 2PD

# Violin Teaching

Grading exams/conservatoire entrance

DBS checked and ISM registered

Graduate: Royal College of Music and University of Oxford

[Emmanuel.F.Bach@gmail.com](mailto:Emmanuel.F.Bach@gmail.com)

Emmanuel Bach

07903 582483



Based in Woking  
Experience with all ages  
Face-to-face and Zoom  
Double vaccinated

## MAGICIAN

**Magician, children's entertainer & balloon modeller**

Based in Horsell.

For a stress-free party. Call **Tim** on

07900 278056

[www.timallenmagician.co.uk](http://www.timallenmagician.co.uk)

## ELECTRICAL SERVICE

**CRH Electrical Services**

14, Swallow Rise, Woking, GU21 2LG

T: 01483 476776 or 07979 468613

[www.crelectrical.co.uk](http://www.crelectrical.co.uk)

## Electrician/Home Maintenance

**Sockets, lights to full re-wires. Painting, tiling, flat pack assembly and plaster repairs etc.**

No job too small. Reliable.

Tim Dear: 01483 762967  
or 07973 777332

## IRONING SERVICE

**The Iron Lady**

39, High Street, Woking, GU21 4UDT

T: 07900 567000

E: [kassie44@hotmail.com](mailto:kassie44@hotmail.com)



# Seymours

Welcome to Horsell



01483 755222